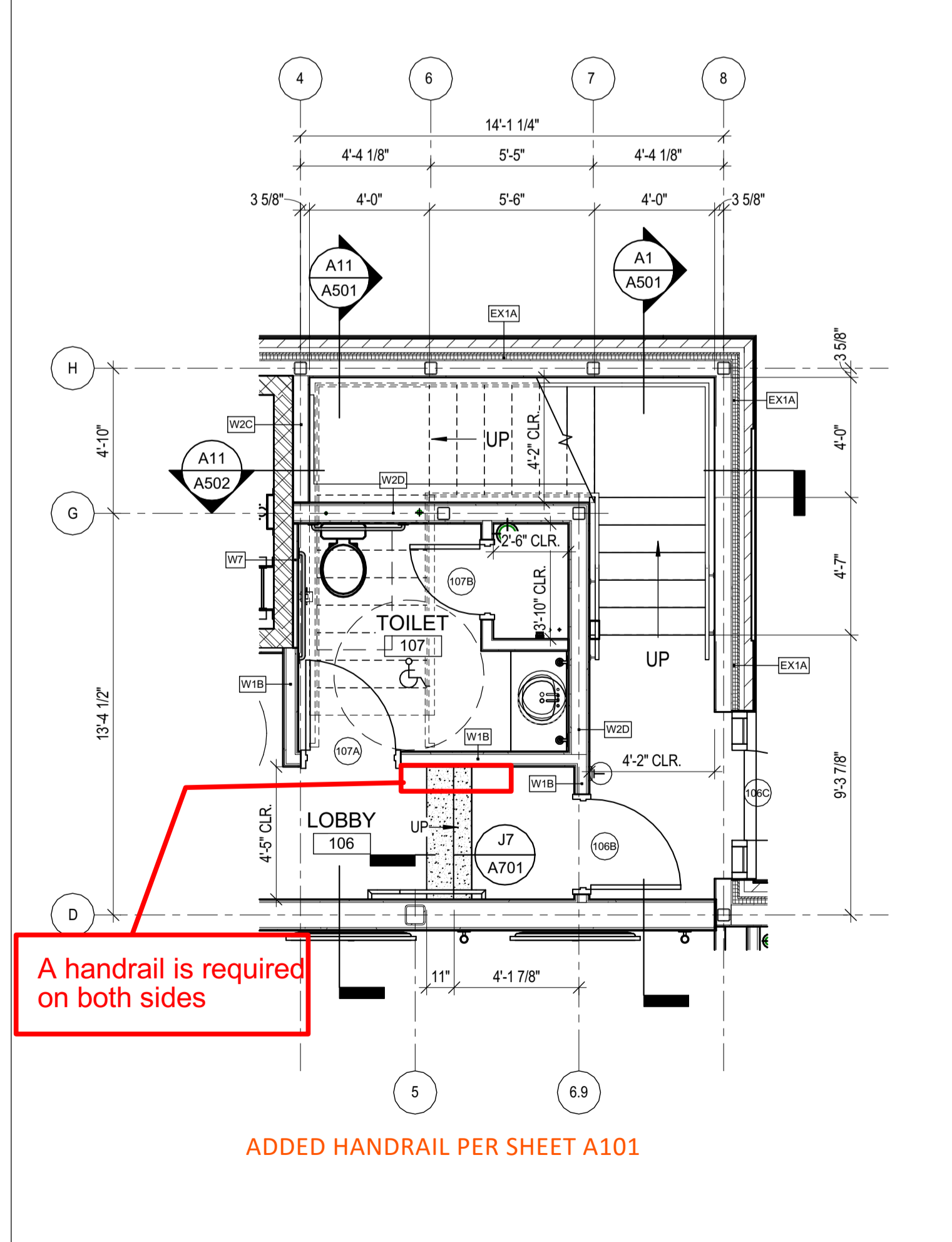
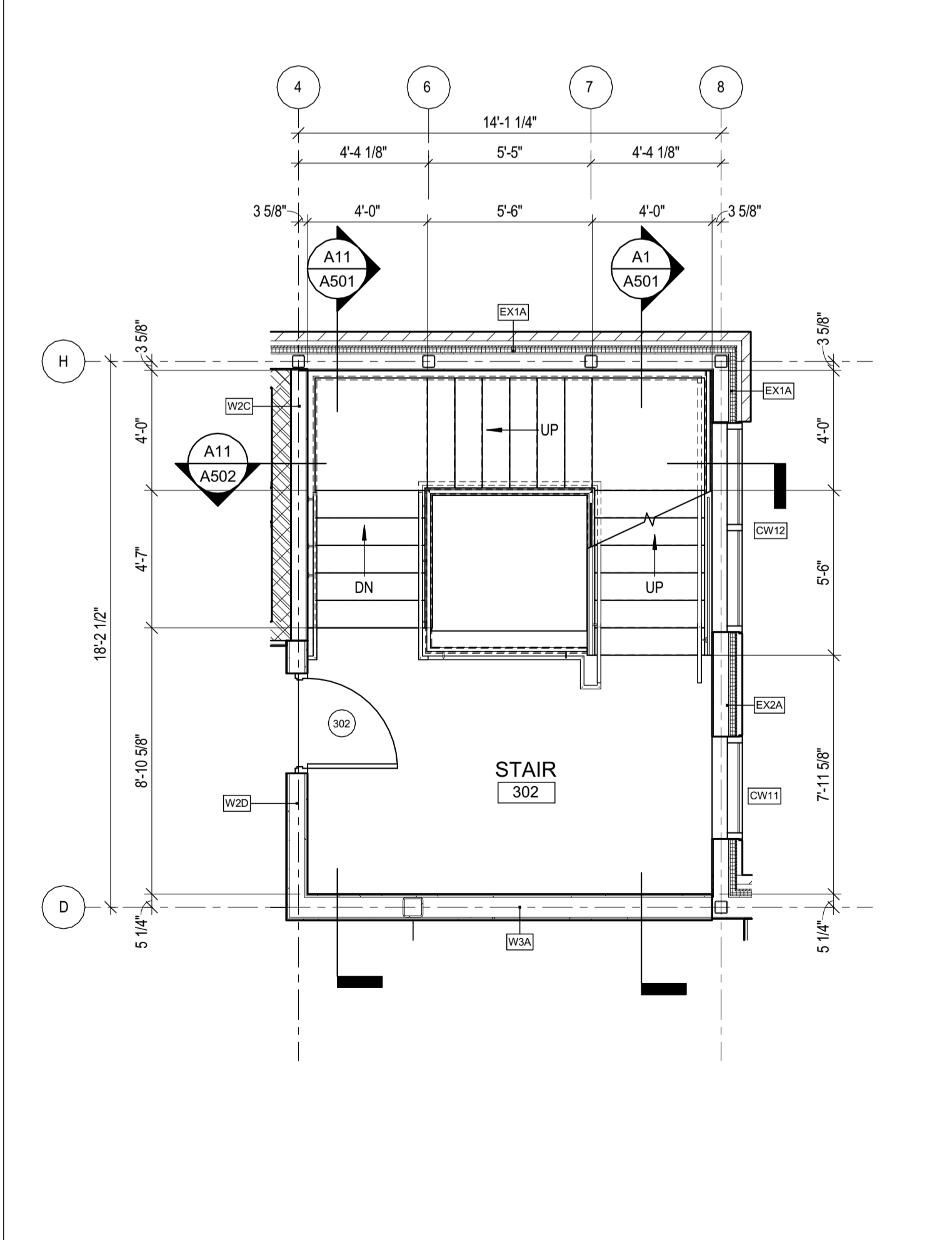
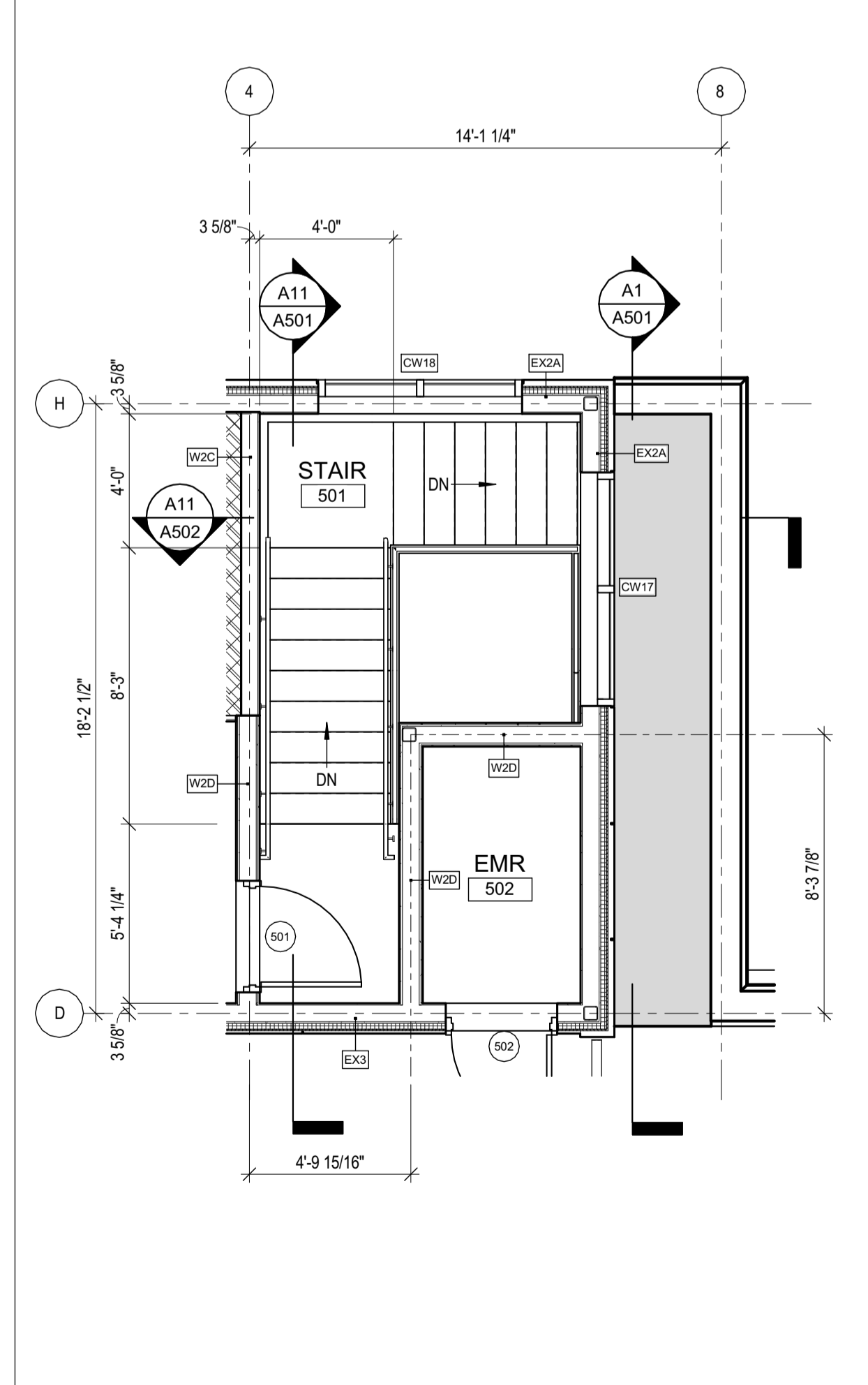


J7 RISER @ CONCRETE STAIR
1 1/2" = 1'-0"

J11 FOURTH FLOOR PLAN - STAIR 1
1/4" = 1'-0"
PLAN NORTH
TRUE NORTH

J16 SECOND FLOOR PLAN - STAIR 1
1/4" = 1'-0"
PLAN NORTH
TRUE NORTH

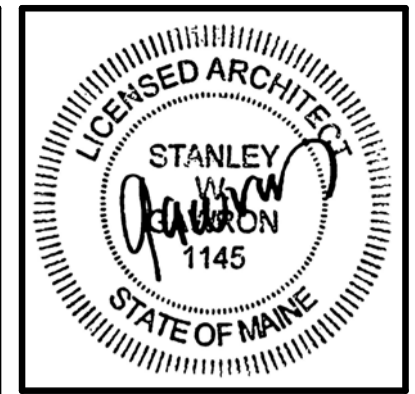


A7 ROOF PLAN - STAIR 1
1/4" = 1'-0"
PLAN NORTH
TRUE NORTH

A11 THIRD FLOOR PLAN - STAIR 1
1/4" = 1'-0"
PLAN NORTH
TRUE NORTH

A16 FIRST FLOOR PLAN - STAIR 1
1/4" = 1'-0"
PLAN NORTH
TRUE NORTH

A1 STAIR SECTION - 1
1/4" = 1'-0"



29 BLACK POINT ROAD
SCARBOROUGH, MAINE 04074
207-883-3307
WWW.GAWRONTURGEON.COM

**GAWRON
TURGEON**
ARCHITECTS, P.C.

cPort Credit Union
35 Middle & 50 India Street
Portland, Maine

REVISIONS		
#	DATE	DESCRIPTION
A	09.14.17	PERMIT SET

DATE:	09.14.17
PROJECT #:	010416
DRAWN BY:	DLP
CHECKED BY:	SWG
DRAWING SCALE:	As indicated

SHEET TITLE
VERTICAL CIRCULATION

A701

© COPYRIGHT 1985-2017
REPRODUCTION OR USE OF
THIS DOCUMENT WITHOUT
WRITTEN PERMISSION OF
GAWRON ARCHITECTS IS PROHIBITED