

29 BLACK POINT ROAD
SCARBOROUGH, MAINE 04074
207-883-0307
WWW.GAWRONTURGEON.COM

**GAWRON
TURGEON**
ARCHITECTS, P.C.

cPort Credit Union
35 Middle & 50 India Street
Portland, Maine

REVISIONS		
#	DATE	DESCRIPTION
A	09.14.17	PERMIT SET

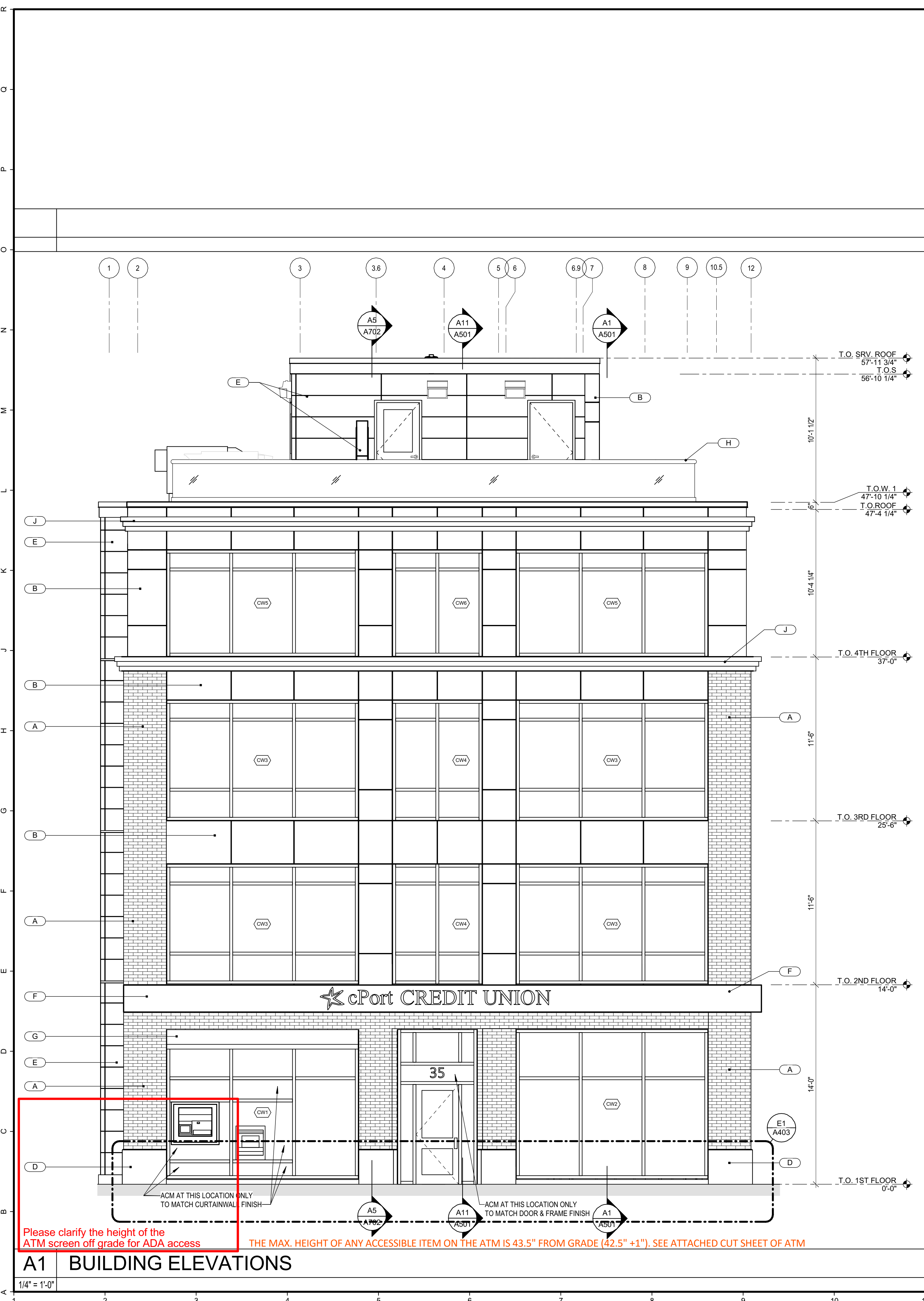
DATE:	09.14.17
PROJECT #:	010416
DRAWN BY:	DLP
CHECKED BY:	SWG
DRAWING SCALE:	As indicated

SHEET TITLE
BUILDING ELEVATIONS

A401

© COPYRIGHT 1985-2017
REPRODUCTION OR RESALE OF
THIS DOCUMENT WITHOUT
WRITTEN PERMISSION OF
GAWRON ARCHITECTS IS PROHIBITED

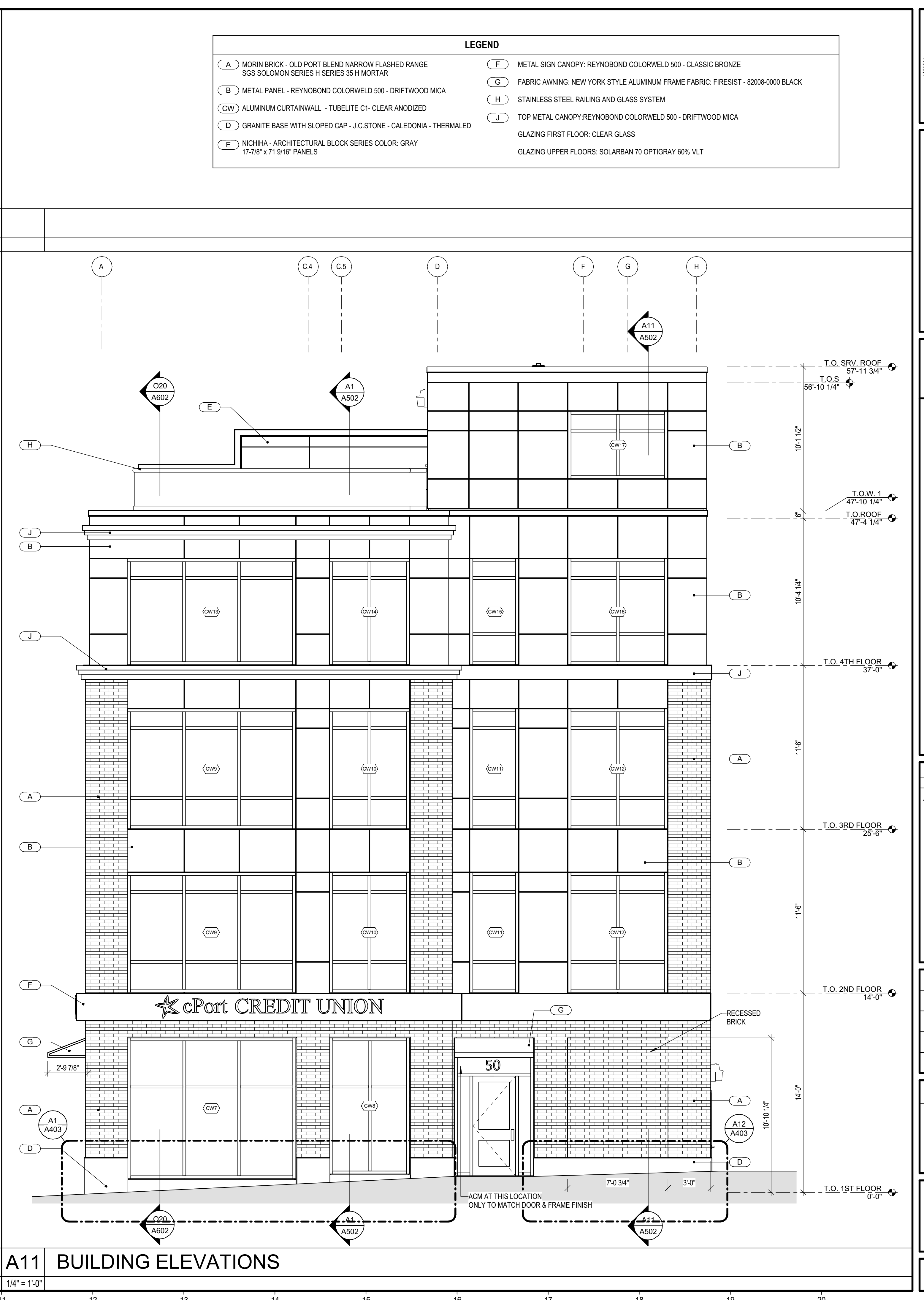
LEGEND			
(A)	MORIN BRICK - OLD PORT BLEND NARROW FLASHED RANGE SGS SOLOMON SERIES H SERIES 35 H MORTAR	(F)	METAL SIGN CANOPY: REYNOBOND COLORWELD 500 - CLASSIC BRONZE
(B)	METAL PANEL - REYNOBOND COLORWELD 500 - DRIFTWOOD MICA	(G)	FABRIC AWNING: NEW YORK STYLE ALUMINUM FRAME FABRIC: FIRESIST - 82008-0000 BLACK
(CW)	ALUMINUM CURTAINWALL - TUBELITE C1 - CLEAR ANODIZED	(H)	STAINLESS STEEL RAILING AND GLASS SYSTEM
(D)	GRANITE BASE WITH SLOPED CAP - J.C.STONE - CALEDONIA - THERMALED	(J)	TOP METAL CANOPY: REYNOBOND COLORWELD 500 - DRIFTWOOD MICA
(E)	NICHIHA - ARCHITECTURAL BLOCK SERIES COLOR: GRAY 17-7/8" x 71 9/16" PANELS		GLAZING FIRST FLOOR: CLEAR GLASS GLAZING UPPER FLOORS: SOLARBAN 70 OPTIGRAY 60% VLT



Please clarify the height of the ATM screen off grade for ADA access THE MAX. HEIGHT OF ANY ACCESSIBLE ITEM ON THE ATM IS 43.5" FROM GRADE (42.5" + 1"). SEE ATTACHED CUT SHEET OF ATM

A1 BUILDING ELEVATIONS

1/4" = 1'-0"



A11 BUILDING ELEVATIONS

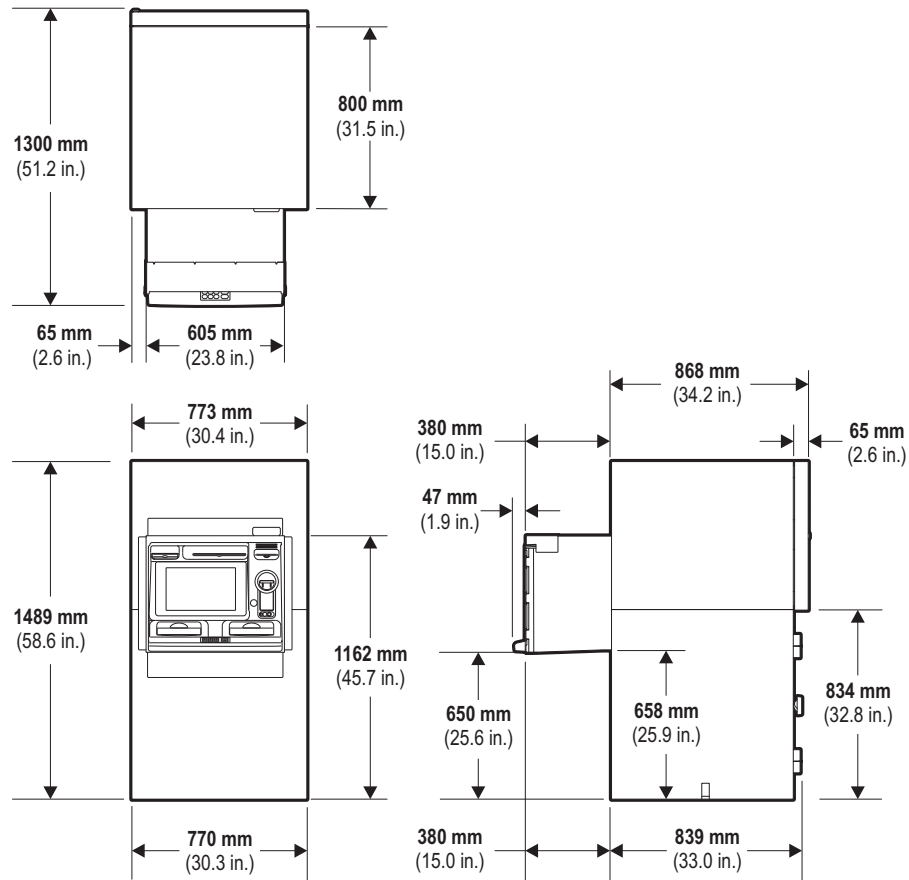
1/4" = 1'-0"

9/18/2017 8:13:35 AM DLP

Walk-Up Dimensions

Standard Sleeve Without Collar

UL Security Enclosure The illustration below shows the dimensions for a walk-up, standard sleeve ATM configured with a UL security enclosure. It shows the sleeve before a collar has been fitted.



Note: Overall depth dimension includes the door lock. Overall width dimension includes the top door hinge.








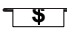

ACCESS FOR ALL

The walk-up ATM has been designed to meet the height and reach requirements of both the able-bodied and the disabled. For wheelchair users, the ATM offers optimised parallel approach, providing easy access, security and private space if installed according to the specifications detailed in this document.

Height and Depth to Main Facia Items

The following tables give the height and depth to the main facia items located on the facia. All the height dimensions are calculated from the base of the ATM.

Walk-Up

Facia Item		Walk-Up		
		Height (from base of ATM)		Depth (from front of collar)
		UL Security Enclosure	CEN Security Enclosure	UL and CEN Security Enclosures
A	 Statement Exit or Passbook Entry and Exit (See Note)	1070 mm (42.1 in.)	1079 mm (42.5 in.)	207 mm (8.1 in.)
B	 Cheque Entry	1051 mm (42.4 in.)	1060 mm (42.7 in.)	147 mm (5.9 in.)
C	 Coin Exit	1065 mm (41.9 in.)	1074 mm (42.3 in.)	168 mm (6.6 in.)
D	 381 mm (15.0 in.) Touchscreen Display	1020 mm (40.2 in.)	1029 mm (40.5 in.)	220 mm (8.7 in.)
	 307 mm (12.1 in.) Touchscreen Display	999 mm (39.3 in.)	1008 mm (39.7 in.)	214 mm (8.4 in.)
E	 381 mm (15.0 in.) Display - Top FDK	952 mm (37.5 in.)	961 mm (37.8 in.)	168 mm (6.6 in.)
	 307 mm (12.1 in.) Display - Top FDK	945 mm (37.2 in.)	954 mm (37.6 in.)	163 mm (6.4 in.)
F	 Cash Exit or Entry	740 mm (29.1 in.)	749 mm (29.5 in.)	99 mm (3.9 in.)
G	 Envelope Exit or Entry	740 mm (29.1 in.)	749 mm (29.5 in.)	99 mm (3.9 in.)