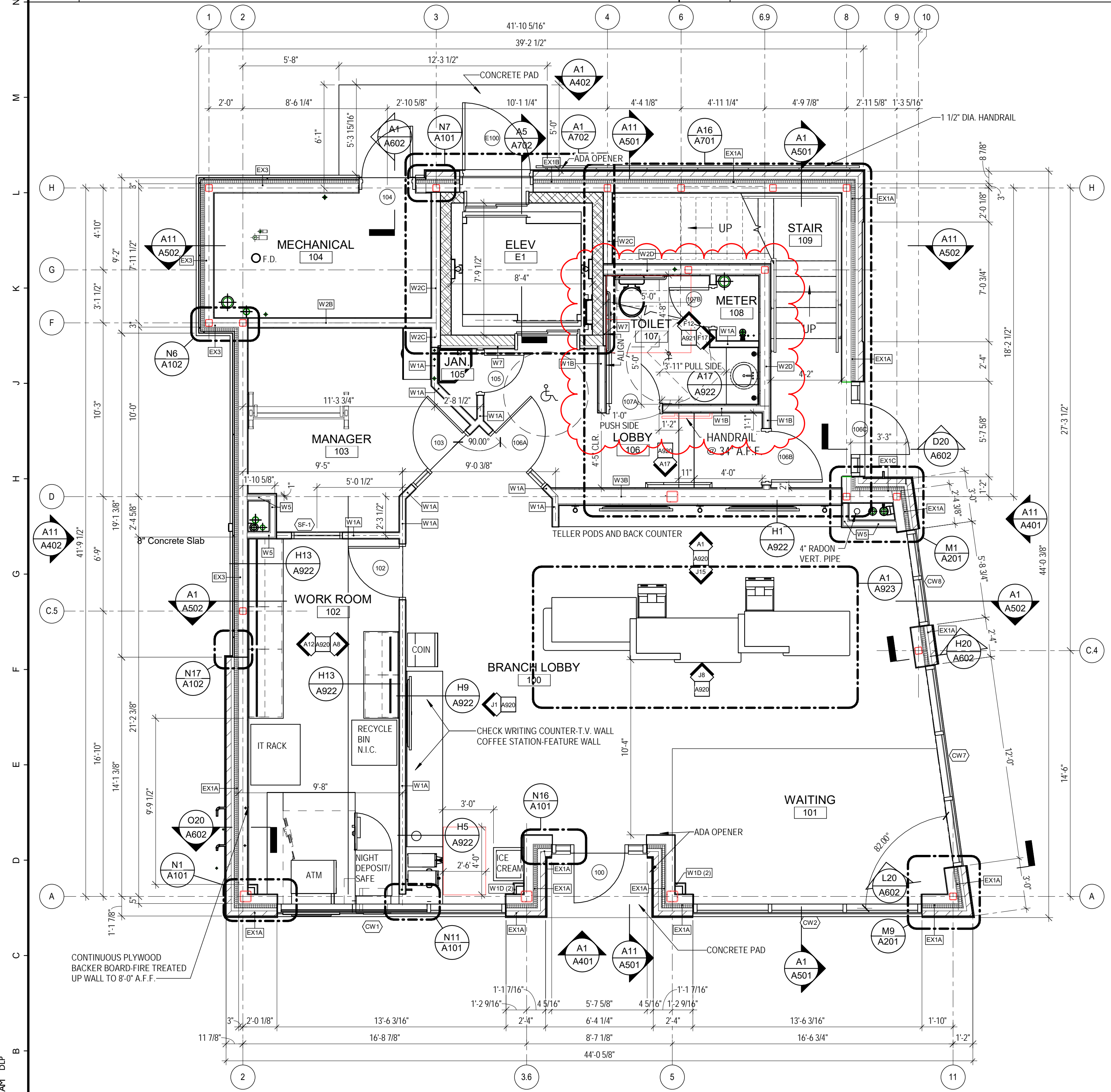
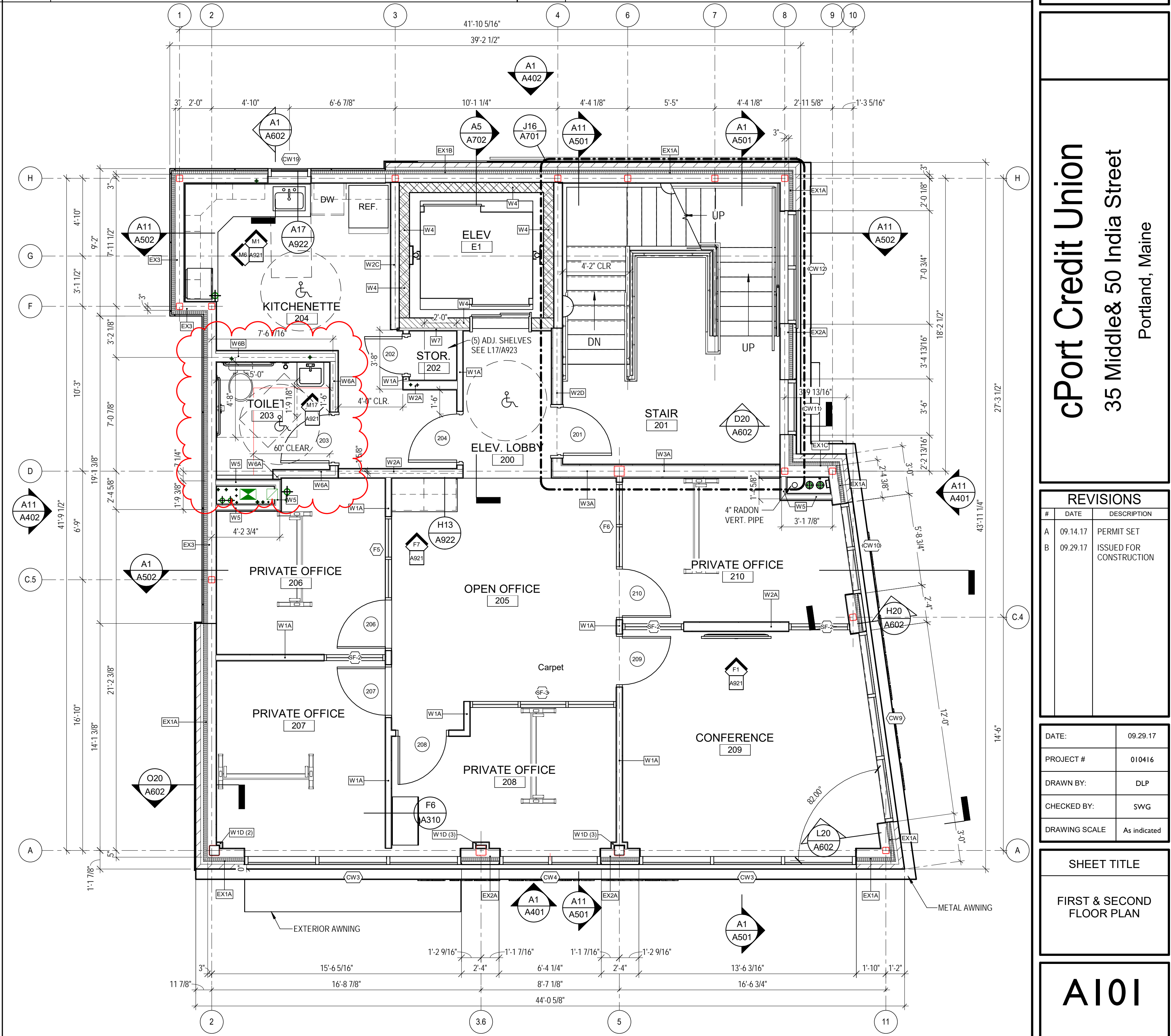


**N1 PLAN DETAIL - 1** 1/12" = 1'-0"  
**N7 PLAN DETAIL - 8** 1/12" = 1'-0"  
**N11 PLAN DETAIL - 2** 1/12" = 1'-0"  
**N16 PLAN DETAIL - 3** 1/12" = 1'-0"



**A1 FIRST FLOOR PLAN** 1/4" = 1'-0"  
 1,535 S.F. - INSIDE PERIMETER OF BUILDING  
 1,035 S.F. - BANK S.F.



**A11 SECOND FLOOR PLAN** 1/4" = 1'-0"  
 1,535 S.F. - INSIDE PERIMETER OF BUILDING  
 1,228 S.F. - BANK S.F.



29 BLACK POINT ROAD  
 SCARBOROUGH, MAINE 04074  
 207-883-4397  
 WWW.GAWRONTURGEON.COM  
**GAWRON TURGEON ARCHITECTS, P.C.**

**cPort Credit Union**  
 35 Middle & 50 India Street  
 Portland, Maine

REVISIONS		
#	DATE	DESCRIPTION
A	09.14.17	PERMIT SET
B	09.29.17	ISSUED FOR CONSTRUCTION

DATE:	09.29.17
PROJECT #	010416
DRAWN BY:	DLP
CHECKED BY:	SWG
DRAWING SCALE	As indicated

**SHEET TITLE**  
 FIRST & SECOND FLOOR PLAN

**A101**

© COPYRIGHT 1985-2017  
 REPRODUCTION OR RESALE OF  
 THIS DOCUMENT WITHOUT  
 THE WRITTEN PERMISSION OF  
 GAWRON ARCHITECTS IS PROHIBITED

17/2017 62319 A1 DLP