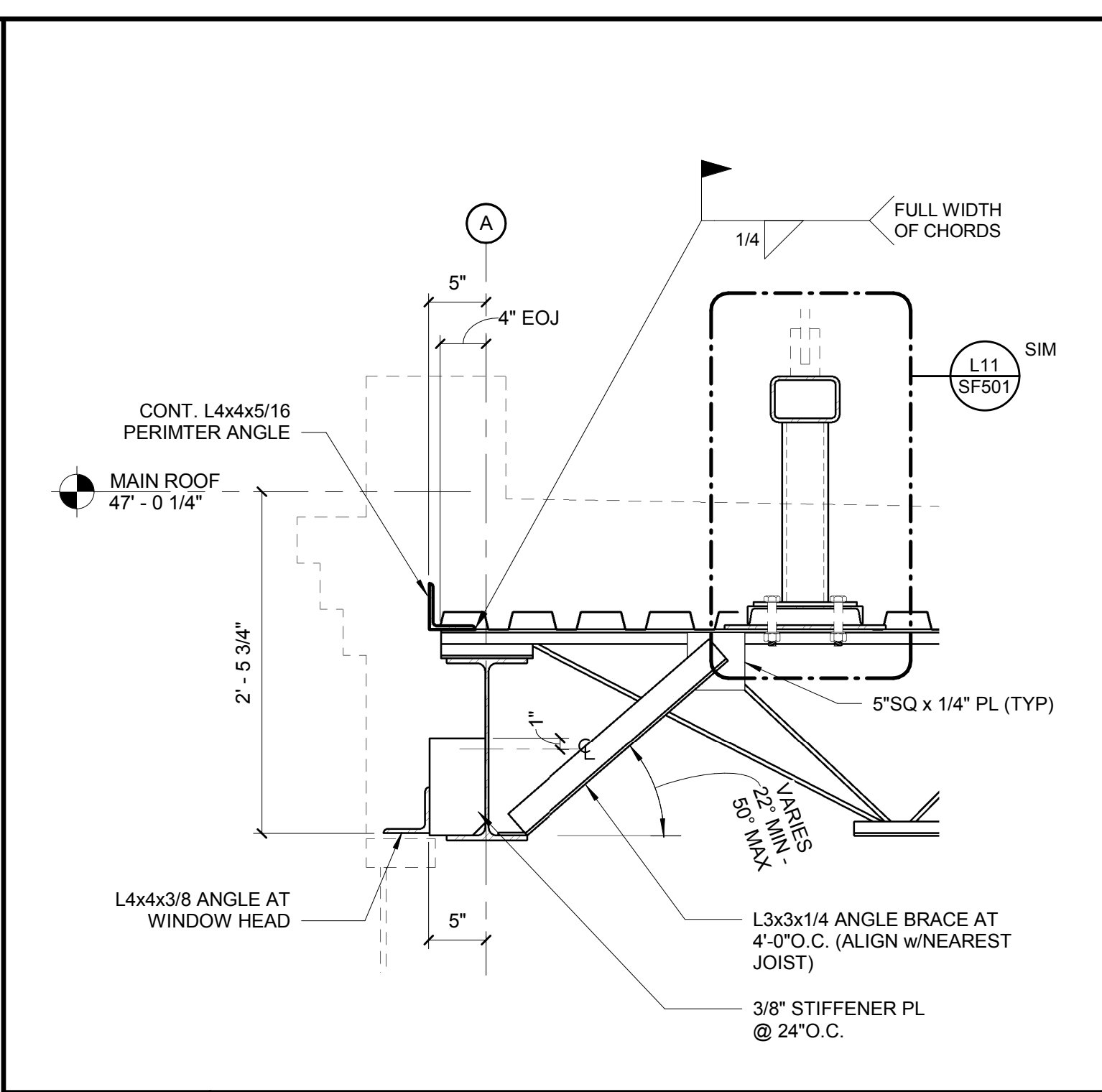
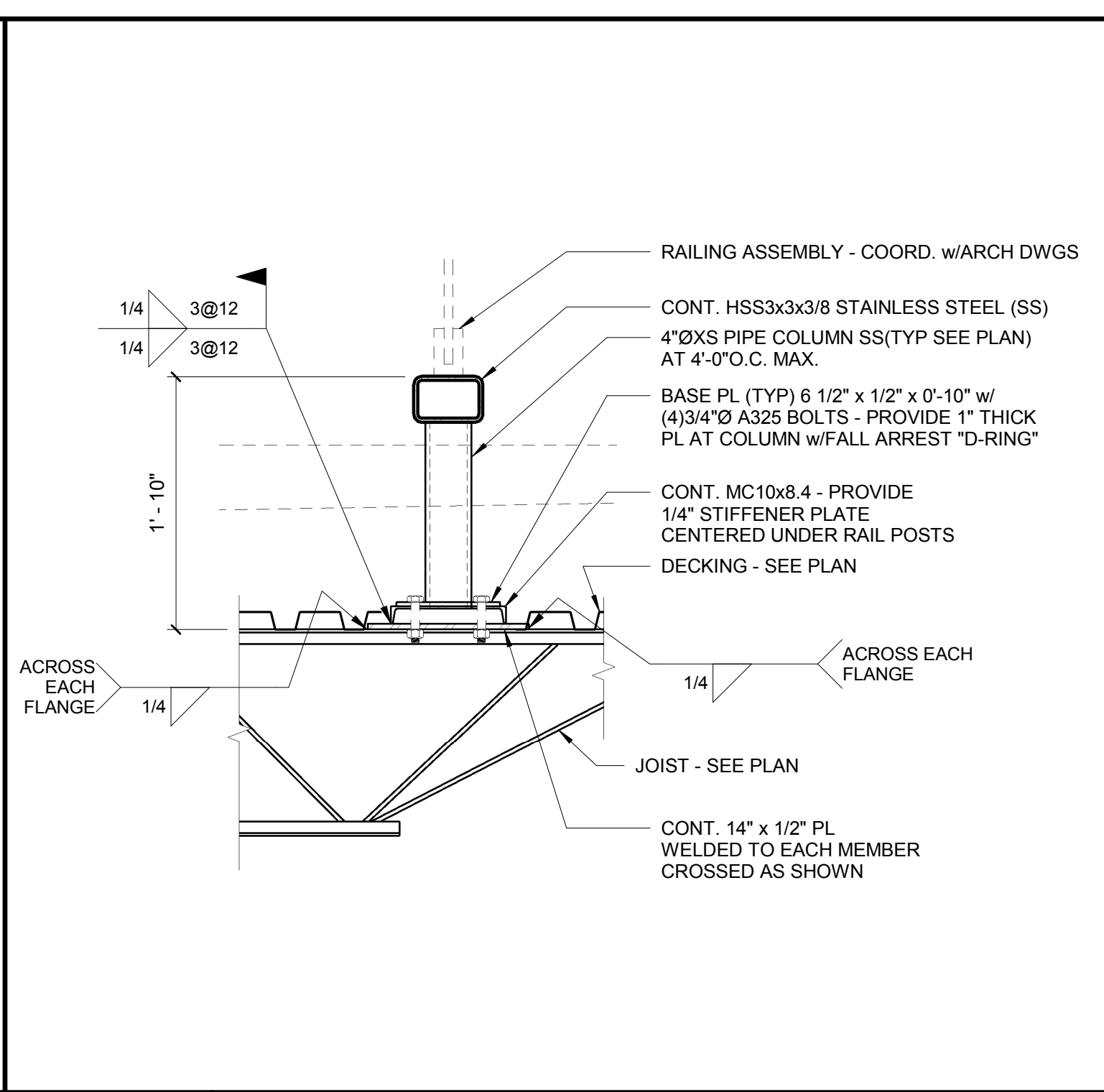


L6 DETAIL
1" = 1'-0"

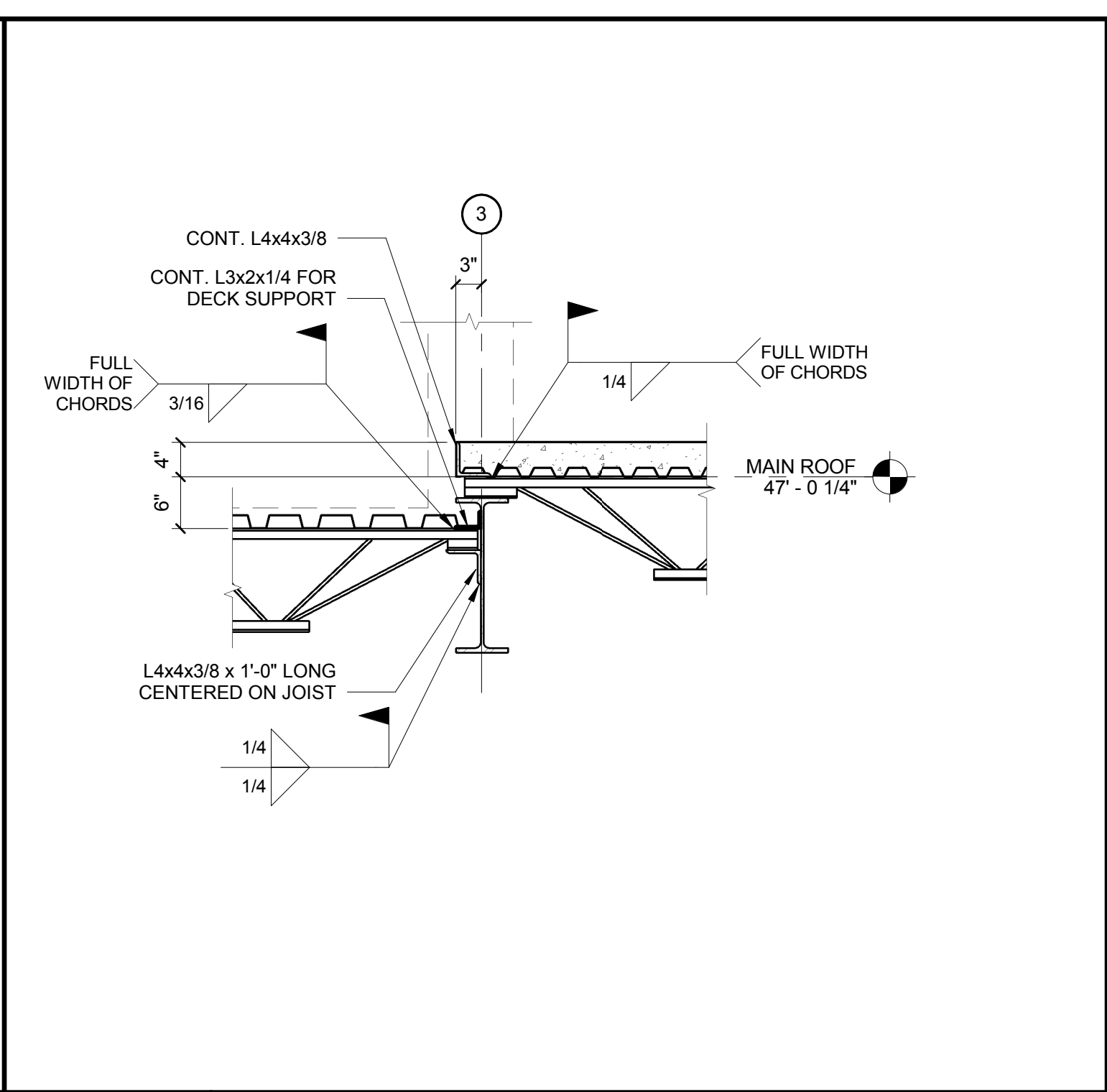
K1 DETAIL
3/4" = 1'-0"



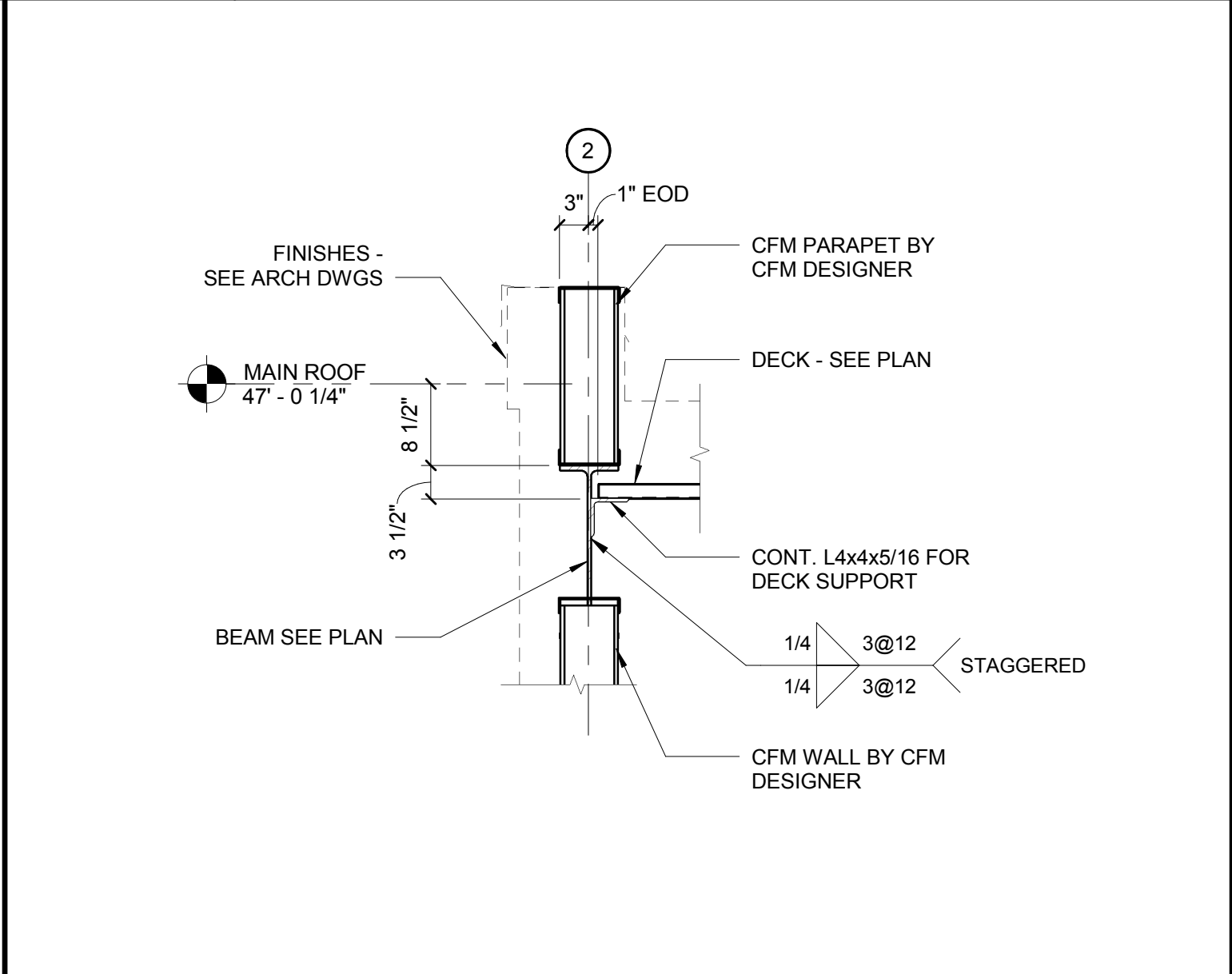
L11 DETAIL
1" = 1'-0"



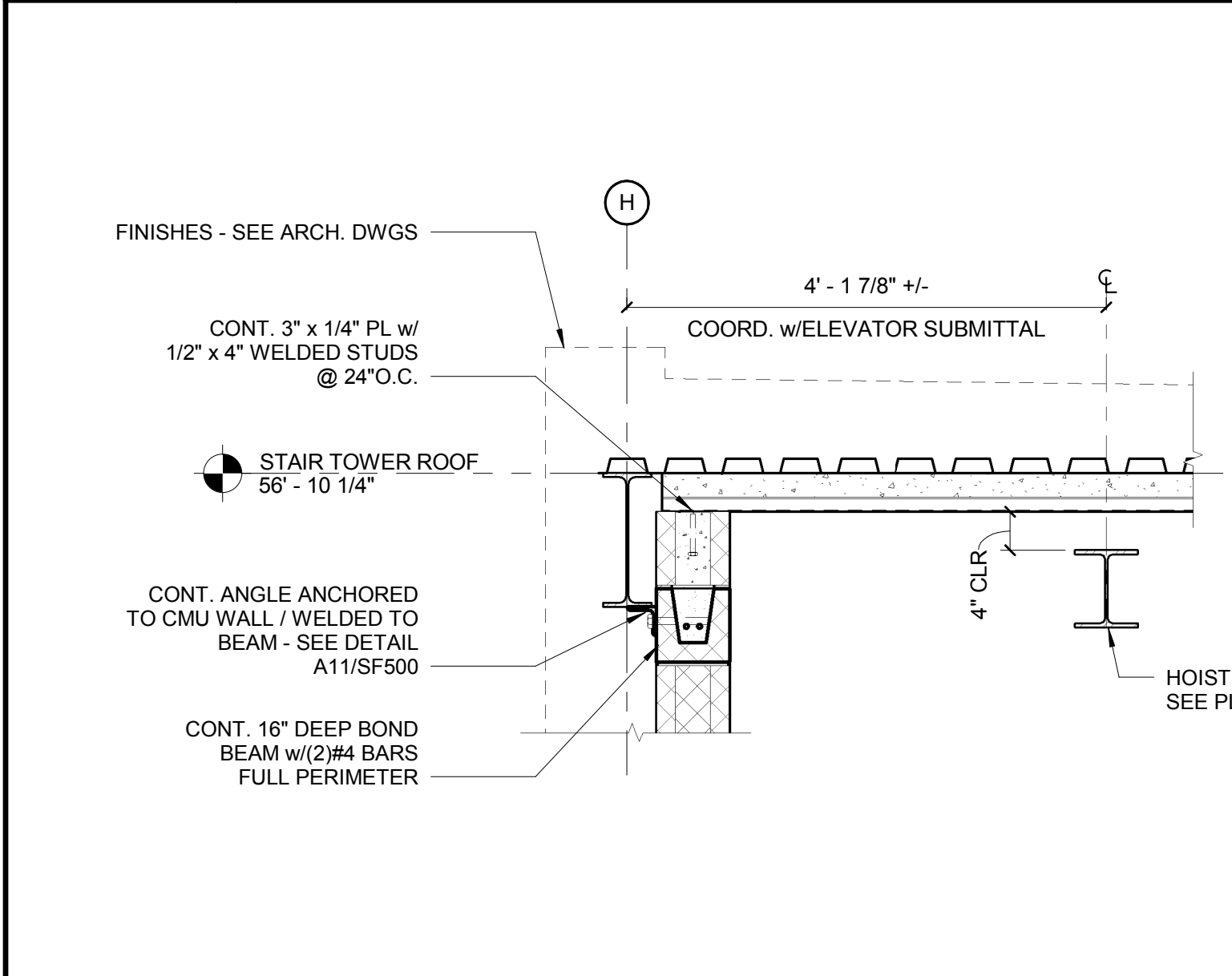
L16 DETAIL
3/4" = 1'-0"



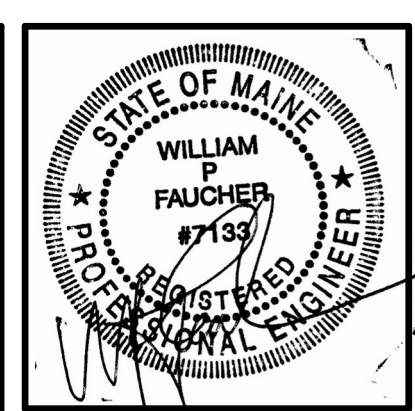
F11 DETAIL
1" = 1'-0"



F16 DETAIL
3/4" = 1'-0"



A11 DETAIL
3/4" = 1'-0"



29 BLACK POINT ROAD
SCARBOROUGH, MAINE 04074
207-883-6307
WWW.GAWRONTURGEON.COM

**GAWRON
TURGEON**
ARCHITECTS, P.C.

cPort Credit Union
50 India Street
Portland, Maine

REVISIONS		
#	DATE	DESCRIPTION
1	09.14.17	PERMIT SET

DATE:	09.14.17
PROJECT #	010416
DRAWN BY:	PED
CHECKED BY:	WPF
DRAWING SCALE	AS NOTED

SHEET TITLE
STRUCTURAL -
DETAILS 2

SF501

© COPYRIGHT 1985-2017
REPRODUCTION OR REUSE OF
THIS DOCUMENT WITHOUT
THE WRITTEN PERMISSION OF
GAWRON ARCHITECTS IS PROHIBITED

Allied Engineering
Structural Mechanical Electrical Commissioning
160 Veranda Street
Portland, Maine 04103
Tel: 207.221.2266
Fax: 207.221.2266
Web: www.allied-eng.com

AEI PROJECT NO. 16025 CAD FILE: 16025_S.rvt

9/15/2017 10:14:07 AM PED