

29 BLACK POINT ROAD
SCARBOROUGH, MAINE 04074
207-883-4307
WWW.GAWRONTURGEON.COM

**GAWRON
TURGEON**
ARCHITECTS, P.C.

cPort Credit Union
50 India Street
Portland, Maine

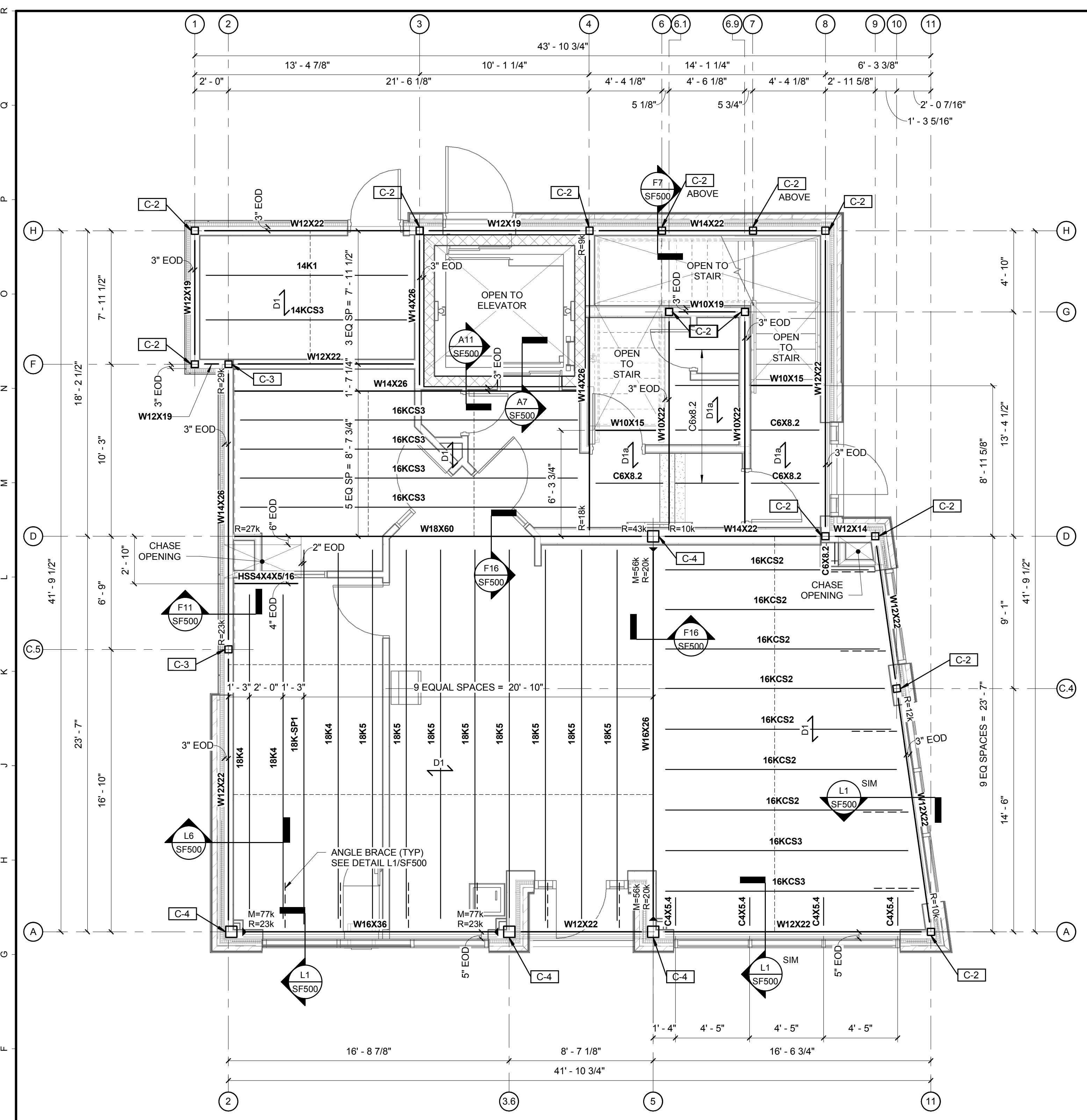
REVISIONS		
#	DATE	DESCRIPTION
1	09.14.17	PERMIT SET

DATE:	09.14.17
PROJECT #:	010416
DRAWN BY:	PED
CHECKED BY:	WPF
DRAWING SCALE:	AS NOTED

SHEET TITLE
STRUCTURAL - SECOND AND THIRD FLOOR FRAMING PLANS

SF100

© COPYRIGHT 1985-2017
REPRODUCTION OR REUSE OF
THIS DOCUMENT WITHOUT
THE WRITTEN PERMISSION OF
GAWRON ARCHITECTS IS PROHIBITED

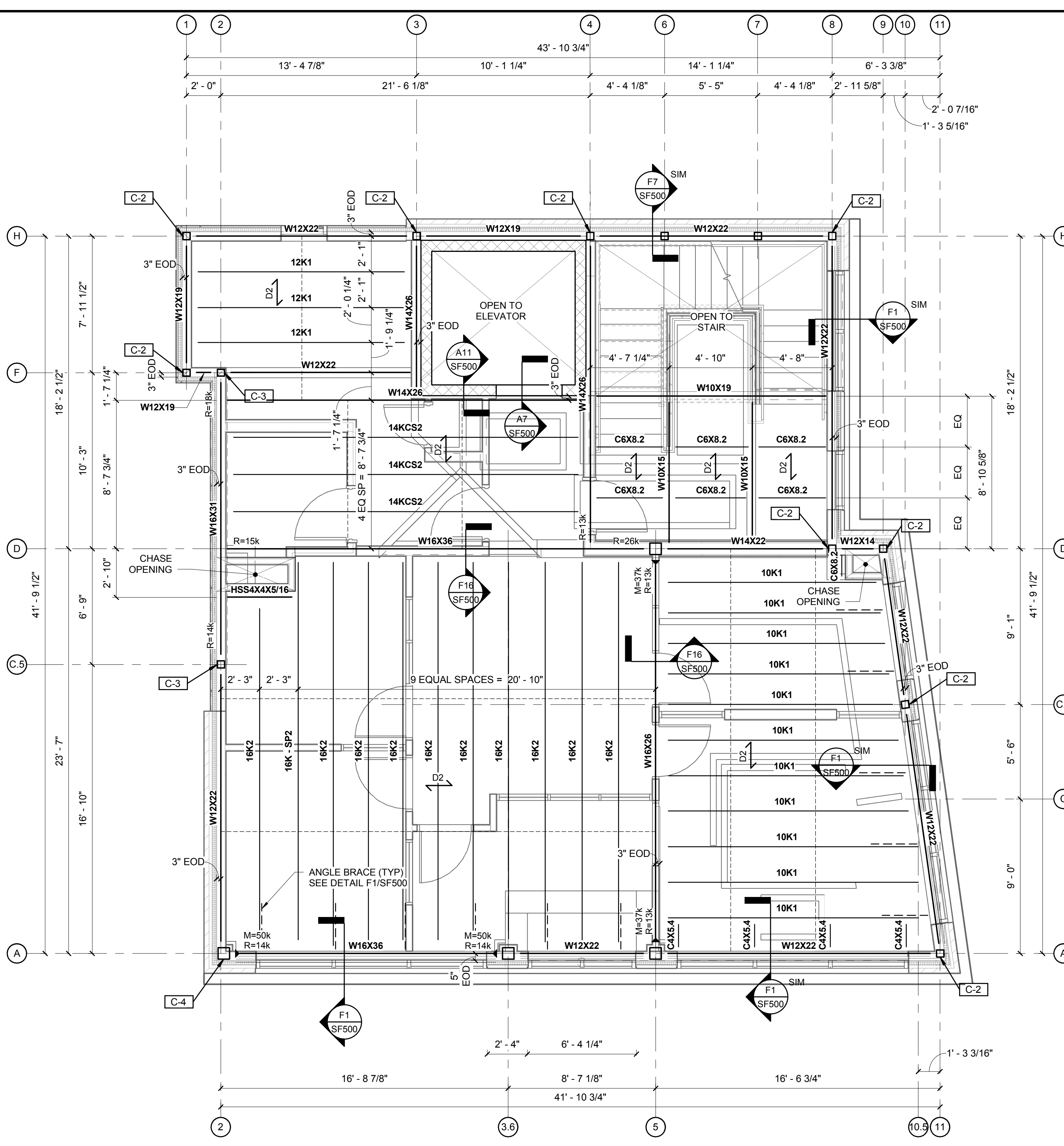
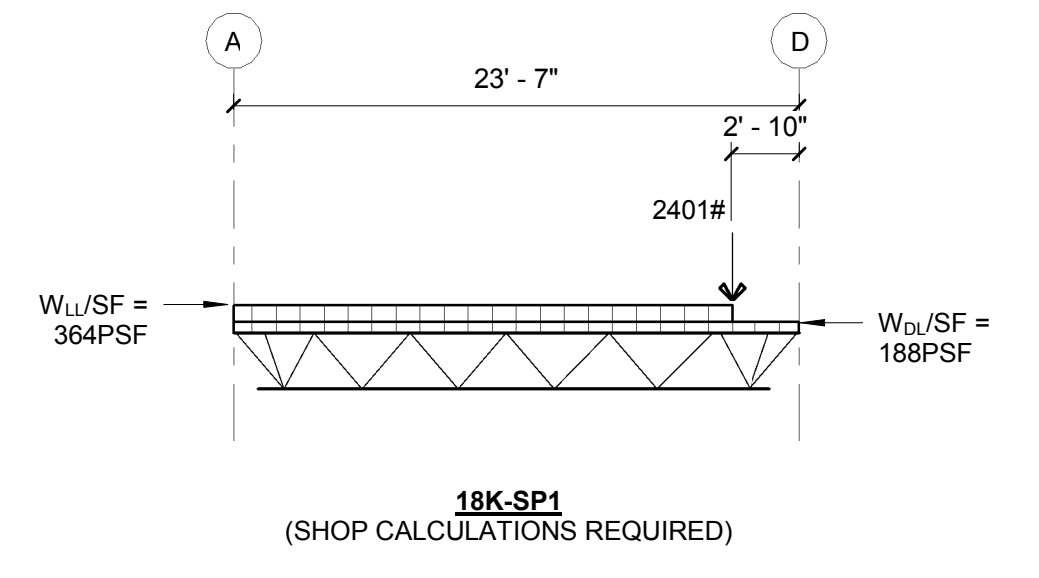


SECOND FLOOR FRAMING PLAN NOTES/LEGEND:

- TOP OF STEEL (TOS) ELEVATION = 13'-7", JOIST BEARING ELEVATION = 13'-4 1/2"
 - SEE A9/S001 FOR FRAMED OPENINGS.
 - JOIST BEARING SEAT DEPTH SHALL BE 2 1/2".
 - BEAM END REACTIONS SHALL BE 8k UNFACTORED, UNLESS NOTED.
- D1 INDICATES SPAN OF 5" CONCRETE ON 1 1/2" NON-COMPOSITE STEEL DECKING - TOTAL FLOOR THICKNESS = 5"
- D1a INDICATES SPAN OF TYPE D1 DECK WITH 1" RECESS IN CONCRETE SLAB FOR ARCHITECTURAL FINISH
- INDICATES MOMENT CONNECTION - SEE DTL E17/S001 (SHOP CALCULATION REQUIRED)

COLUMN SCHEDULE

MARK	SIZE
C-1	Pipe4XS
C-2	HSS5X5X5/16
C-3	HSS5X5X3/8
C-4	HSS8X8X5/8

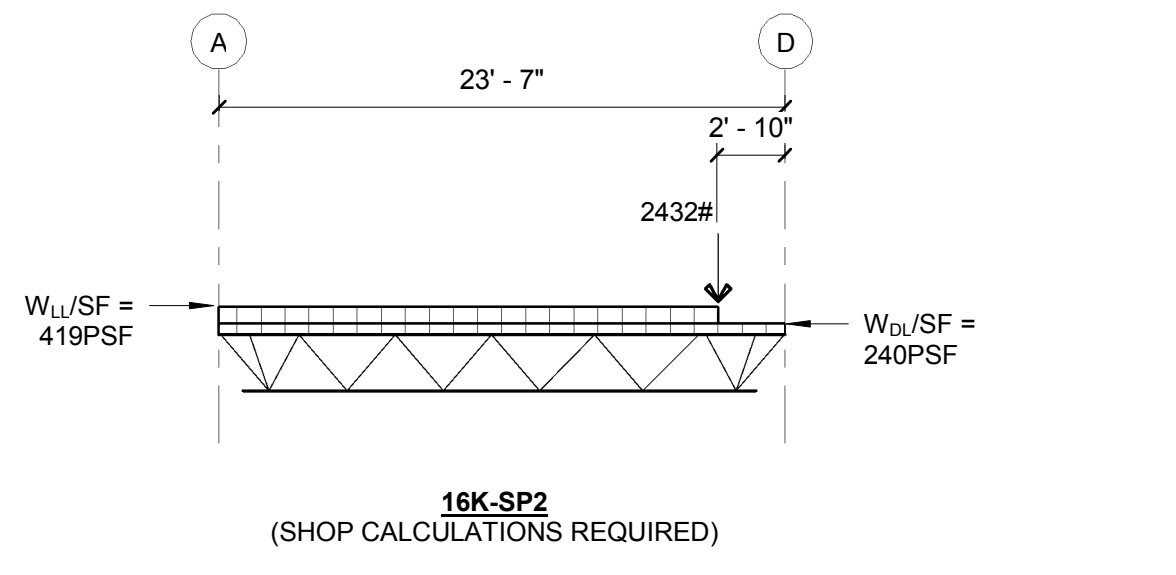


THIRD FLOOR FRAMING PLAN NOTES/LEGEND:

- TOP OF STEEL (TOS) ELEVATION = 25'-2", JOIST BEARING ELEVATION = 24'-11 1/2"
 - SEE A9/S001 FOR FRAMED OPENINGS.
 - JOIST BEARING SEAT DEPTH SHALL BE 2 1/2".
 - BEAM END REACTIONS SHALL BE 8k UNFACTORED, UNLESS NOTED.
- D2 INDICATES SPAN OF 4" CONCRETE ON 1" NON-COMPOSITE STEEL DECKING (SEE SPEC) - TOTAL SLAB/DECK THICKNESS = 4"
- D2a INDICATES SPAN OF TYPE D2 DECK WITH 1" RECESS IN CONCRETE SLAB FOR ARCHITECTURAL FINISH
- INDICATES MOMENT CONNECTION - SEE DTL E17/S001 (SHOP CALCULATION REQUIRED)

COLUMN SCHEDULE

MARK	SIZE
C-1	Pipe4XS
C-2	HSS5X5X5/16
C-3	HSS5X5X3/8
C-4	HSS8X8X5/8



A1 STRUCTURAL ~ SECOND FLOOR FRAMING PLAN

1/4" = 1'-0"

A11 STRUCTURAL ~ THIRD FLOOR FRAMING PLAN

1/4" = 1'-0"

Allied Engineering
Structural Mechanical Electrical Commissioning
160 Veranda Street
Portland, Maine 04103
Tel: 207.221.2266
Fax: 207.221.2266
Web: www.allied-eng.com

AEI PROJECT NO. 16025 CAD FILE: 16025_S.rvt

9/15/2017 10:13:51 AM PED