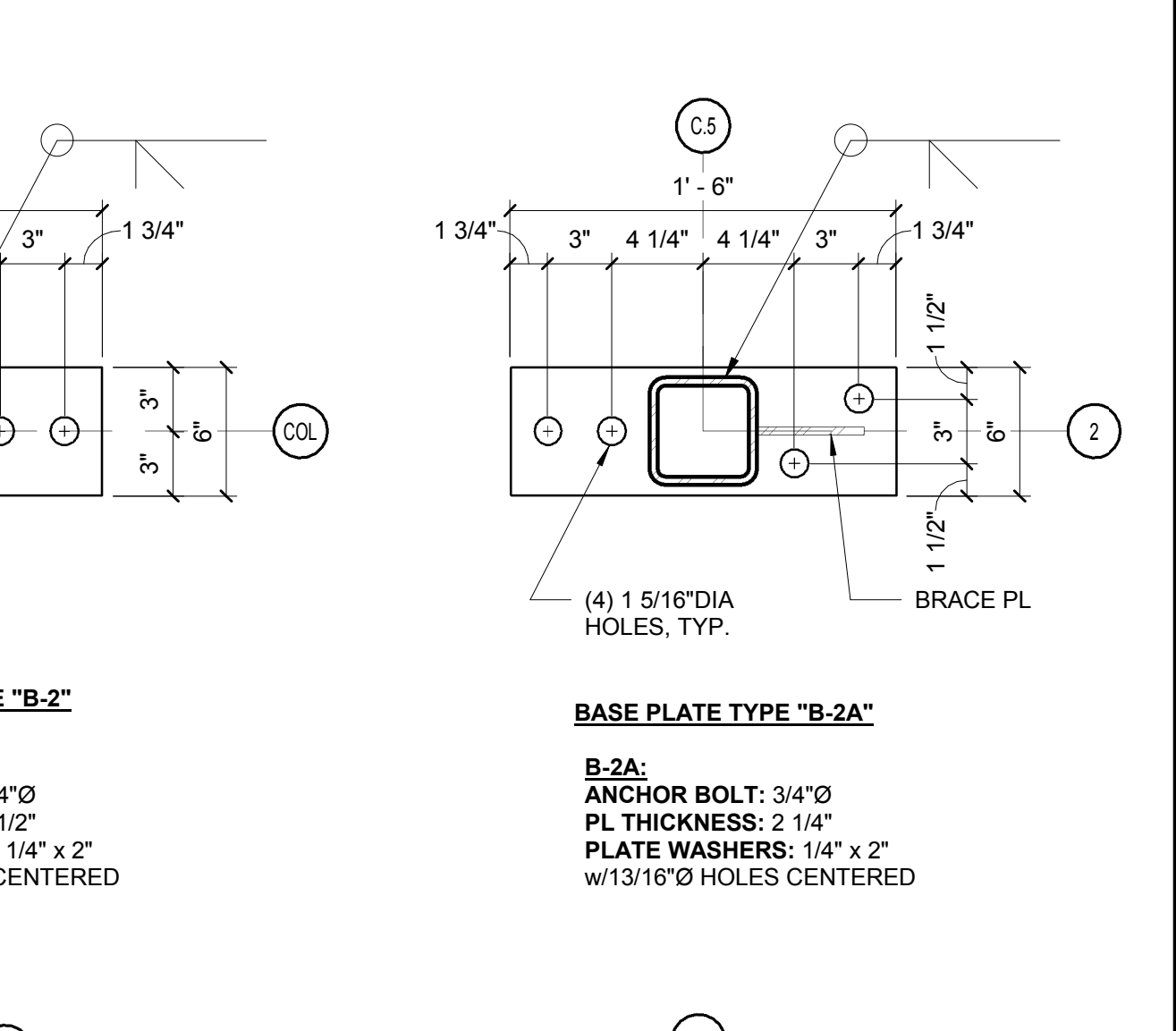
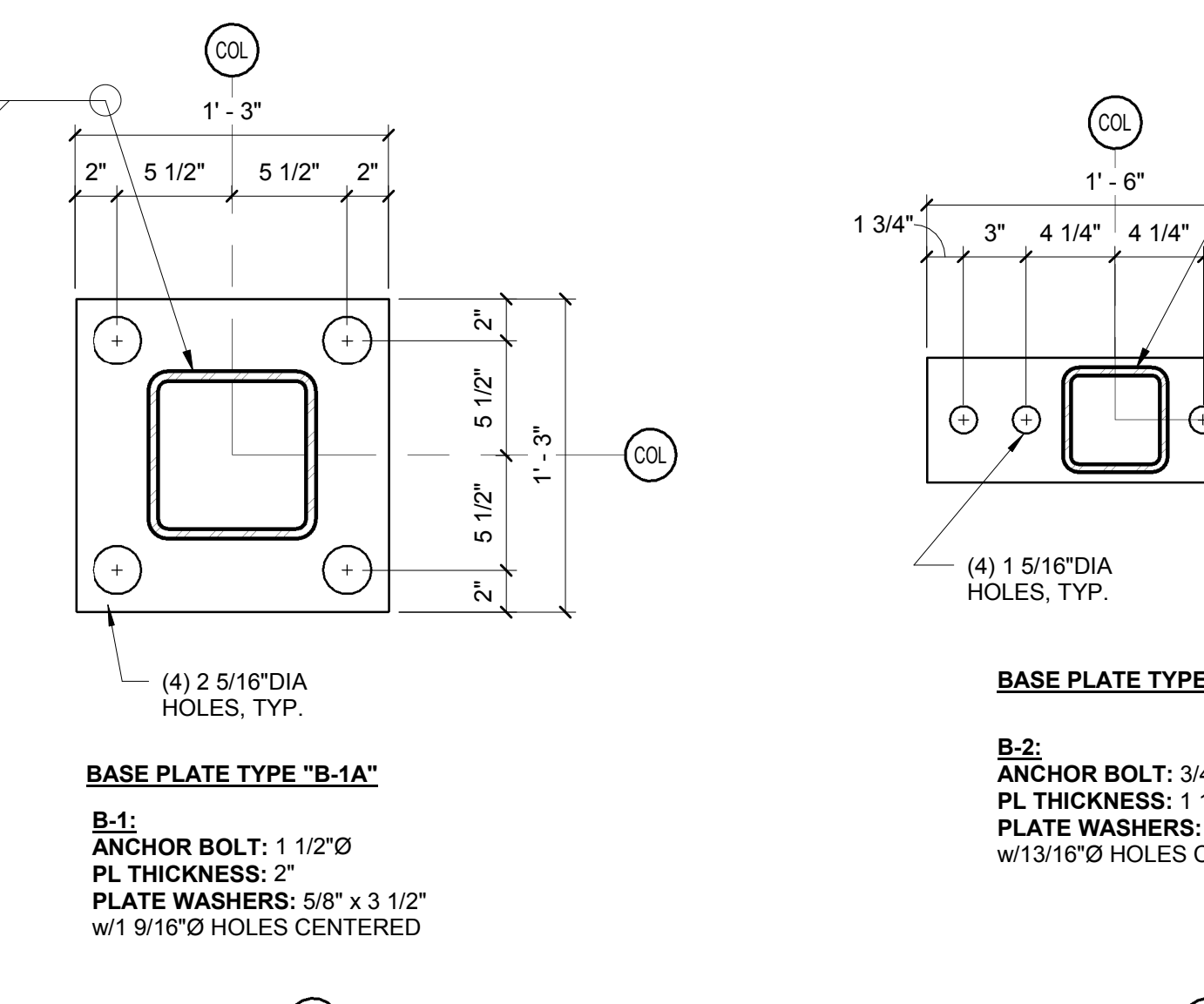
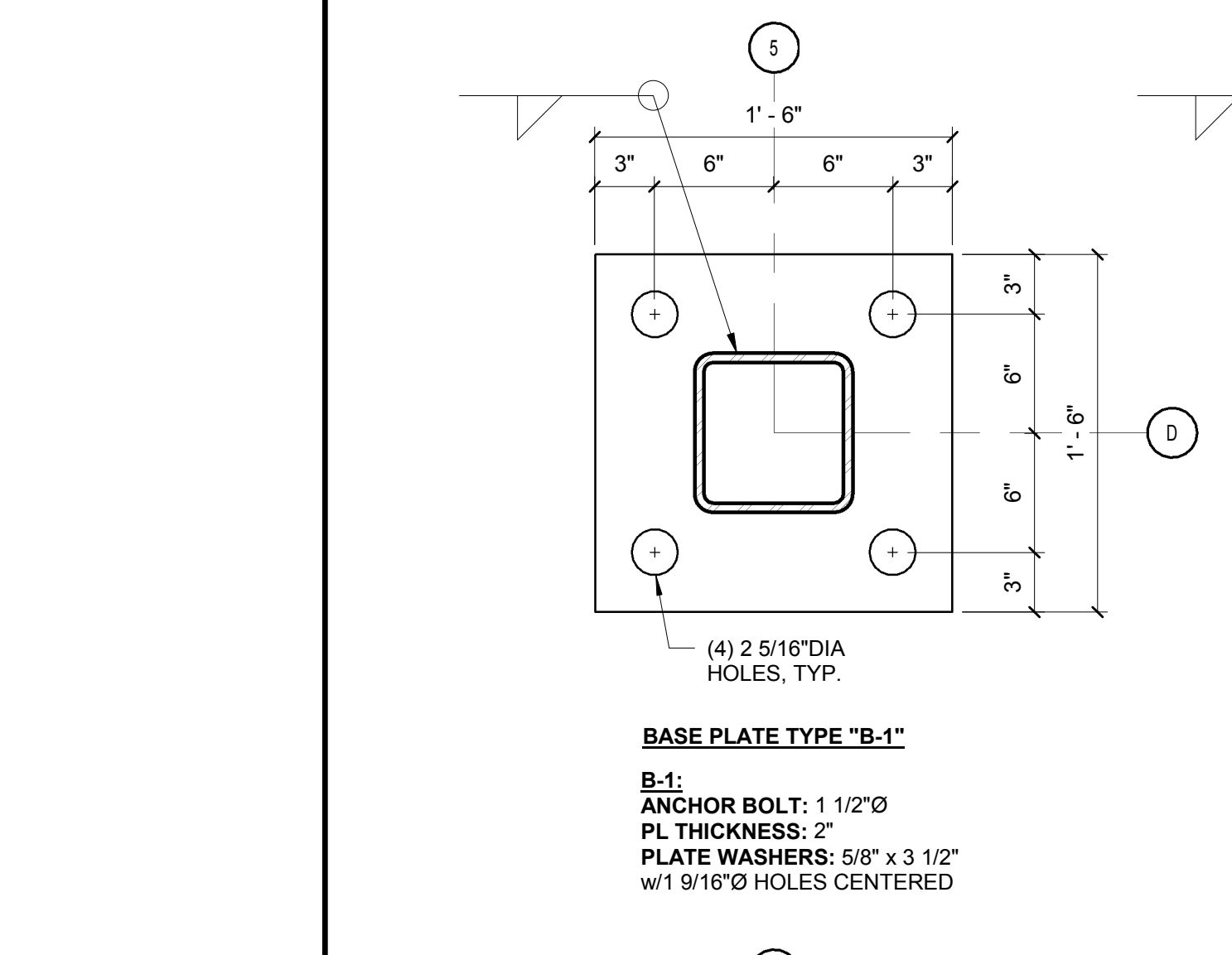
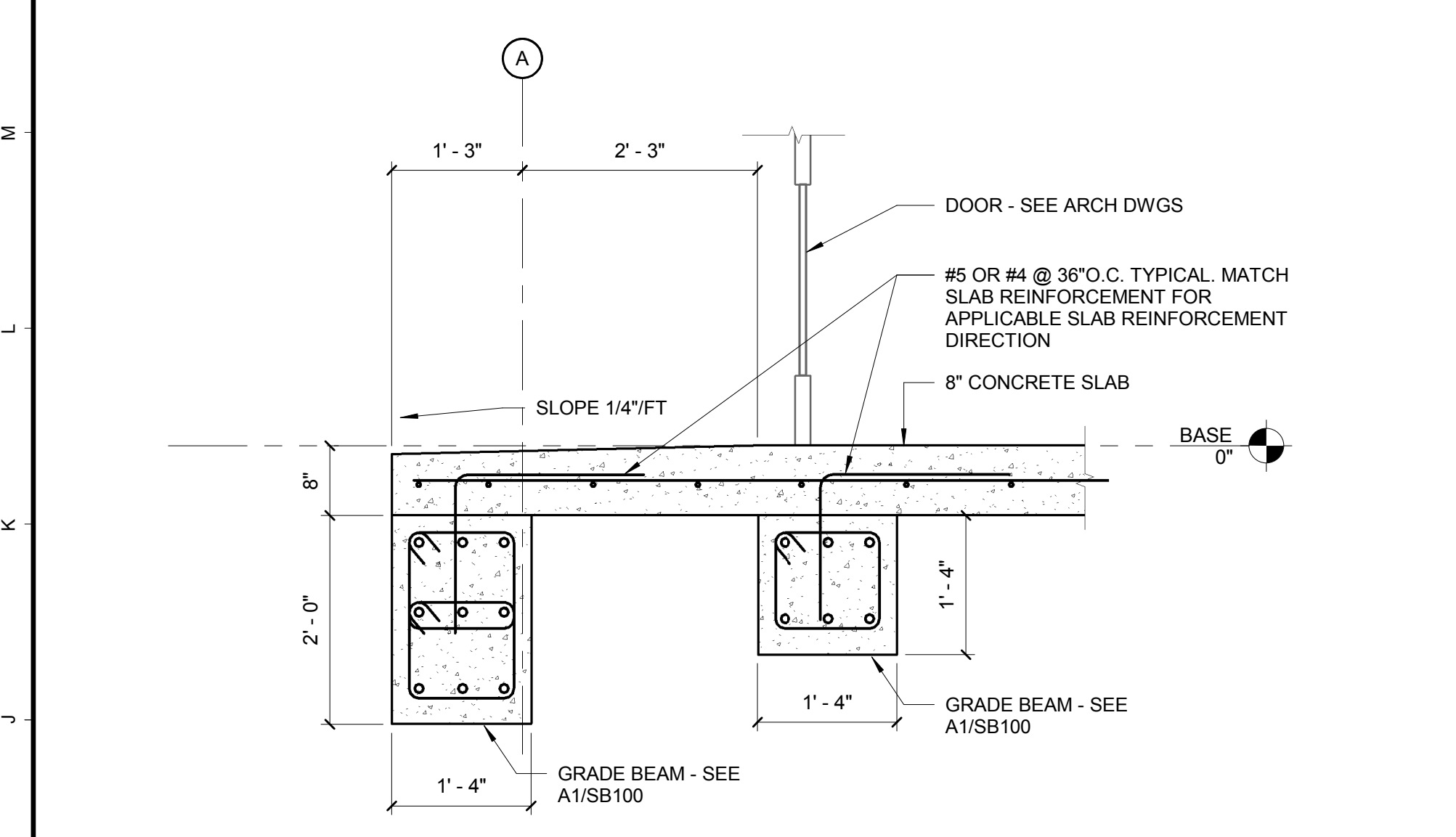


N1 DETAIL
3/4" = 1'-0"

N8 DETAIL
3/4" = 1'-0"

N13 DETAIL
3/4" = 1'-0"

N17 DETAIL
3/4" = 1'-0"

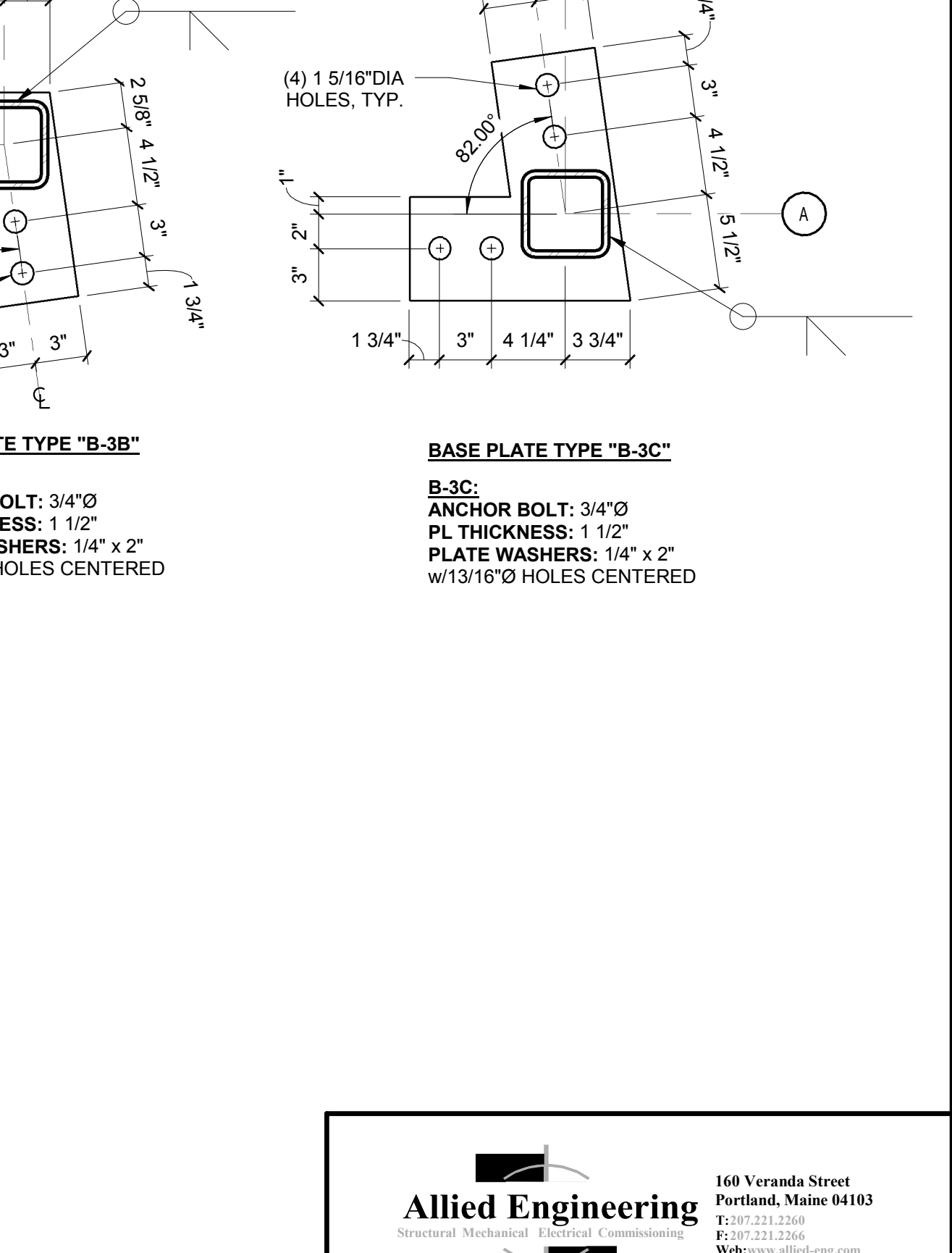
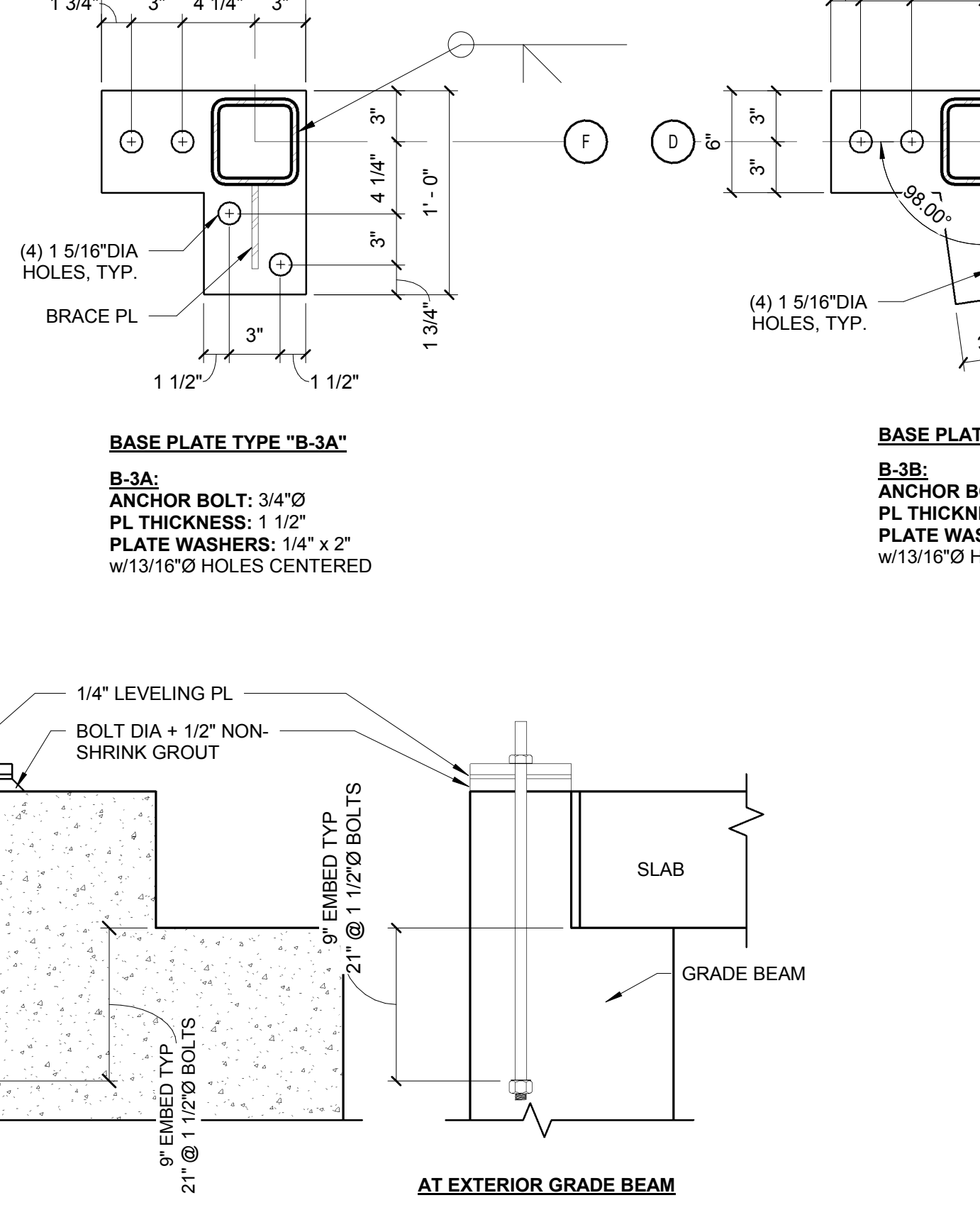
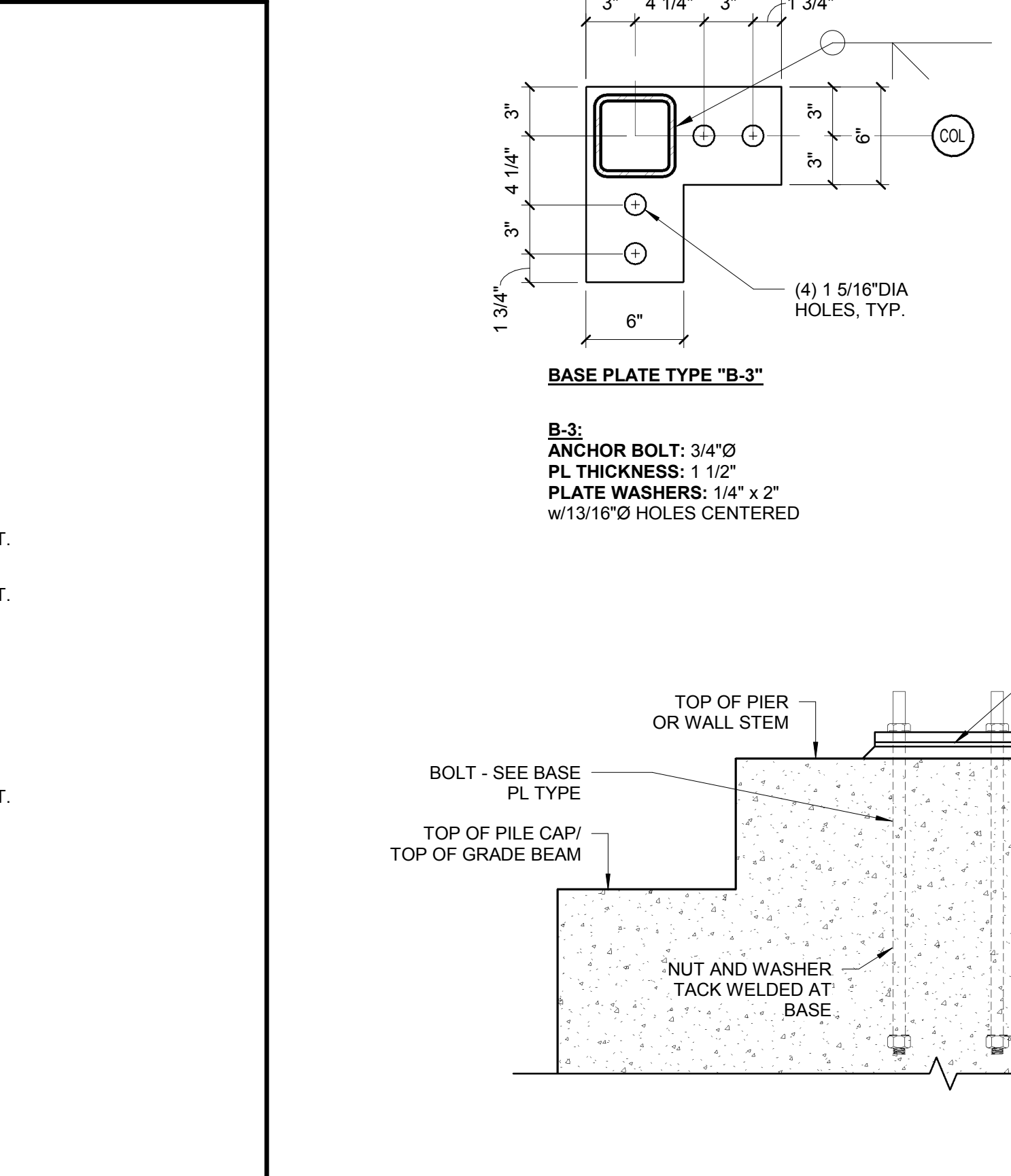
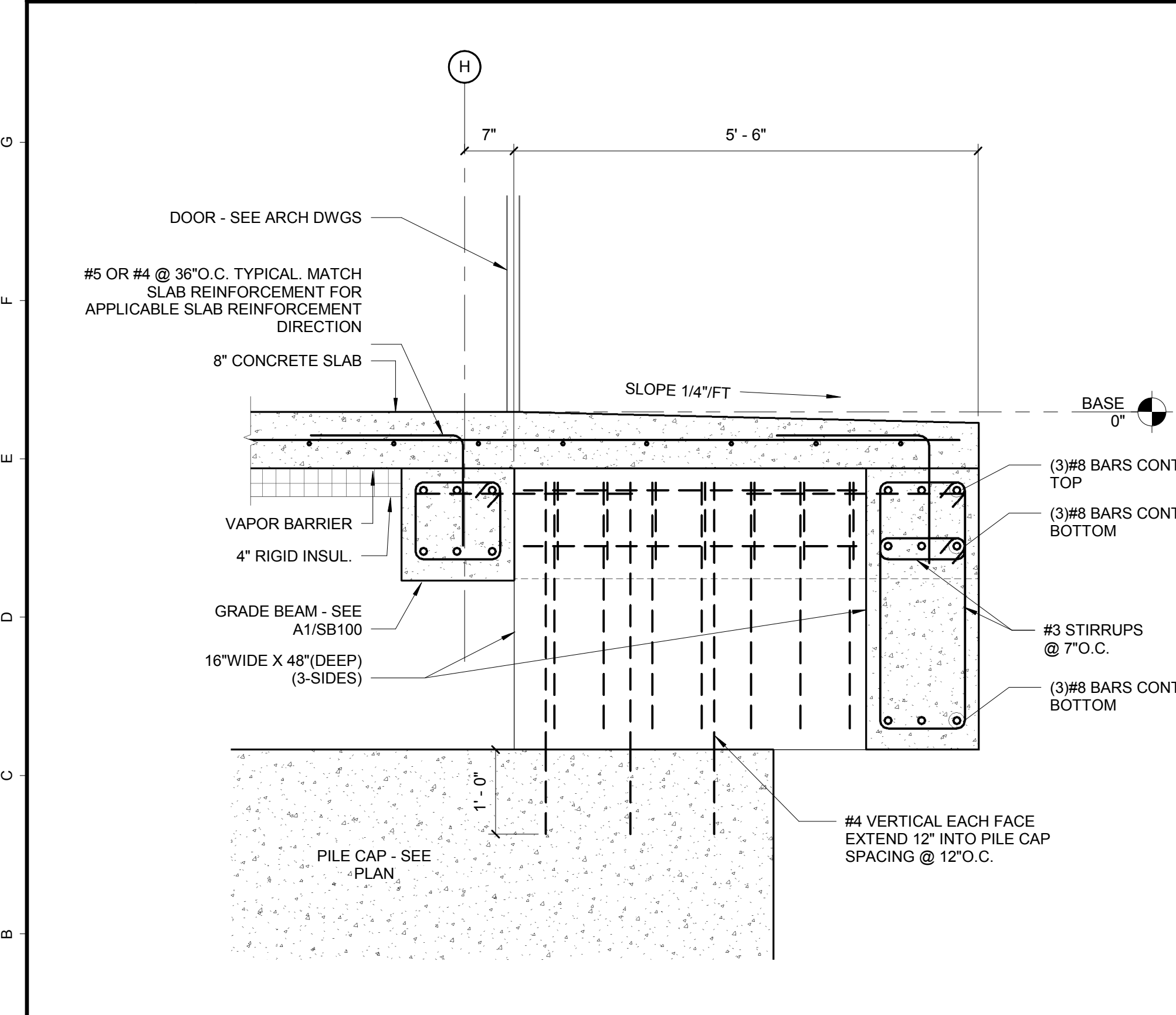


H1 DETAIL
3/4" = 1'-0"

B-1 BASE PLATE TYPE "B-1"
ANCHOR BOLT: 1 1/2" Ø
PL THICKNESS: 2"
PLATE WASHERS: 5/8" x 3 1/2"
w/1 9/16" Ø HOLES CENTERED

B-2 BASE PLATE TYPE "B-2"
B-2:
ANCHOR BOLT: 3/4" Ø
PL THICKNESS: 2 1/4"
PLATE WASHERS: 1/4" x 2"
w/13/16" Ø HOLES CENTERED

B-2A BASE PLATE TYPE "B-2A"
B-2A:
ANCHOR BOLT: 3/4" Ø
PL THICKNESS: 2 1/4"
PLATE WASHERS: 1/4" x 2"
w/13/16" Ø HOLES CENTERED

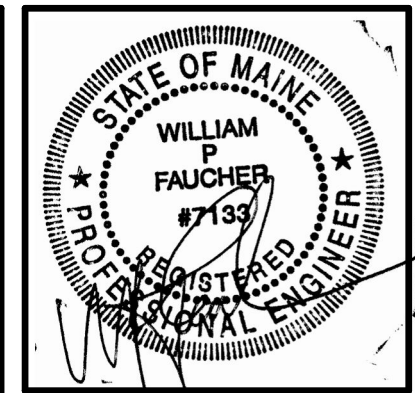


A1 DETAIL
3/4" = 1'-0"

A9 BASE PLATE TYPES
1 1/2" = 1'-0"

B-3 BASE PLATE TYPE "B-3"
B-3:
ANCHOR BOLT: 3/4" Ø
PL THICKNESS: 1 1/2"
PLATE WASHERS: 1/4" x 2"
w/13/16" Ø HOLES CENTERED

B-3A BASE PLATE TYPE "B-3A"
B-3A:
ANCHOR BOLT: 3/4" Ø
PL THICKNESS: 1 1/2"
PLATE WASHERS: 1/4" x 2"
w/13/16" Ø HOLES CENTERED



29 BLACK POINT ROAD
SCARBOROUGH, MAINE 04074
207-883-6307
WWW.GAWRONTURGEON.COM

**GAWRON
TURGEON**
ARCHITECTS, P.C.

cPort Credit Union
50 India Street
Portland, Maine

REVISIONS		
#	DATE	DESCRIPTION
1	09.14.17	PERMIT SET

DATE:	09.14.17
PROJECT #	010416
DRAWN BY:	PED
CHECKED BY:	WPF
DRAWING SCALE	AS NOTED

SHEET TITLE
STRUCTURAL - FOUNDATION DETAILS

SB501

© COPYRIGHT 1985-2017
REPRODUCTION OR REUSE OF
THIS DOCUMENT WITHOUT
THE WRITTEN PERMISSION OF
GAWRON ARCHITECTS IS PROHIBITED

Allied Engineering
Structural Mechanical Electrical Commissioning
160 Veranda Street
Portland, Maine 04103
F1: 207.221.2266
F2: 207.221.2266
Web: www.allied-eng.com

9/15/2017 7:33:29 AM PED