

29 BLACK POINT ROAD  
SCARBOROUGH, MAINE 04074  
207-883-4307  
WWW.GAWRONTURGEON.COM

**GAWRON  
TURGEON**  
ARCHITECTS, P.C.

**cPort Credit Union**  
50 India Street  
Portland, Maine

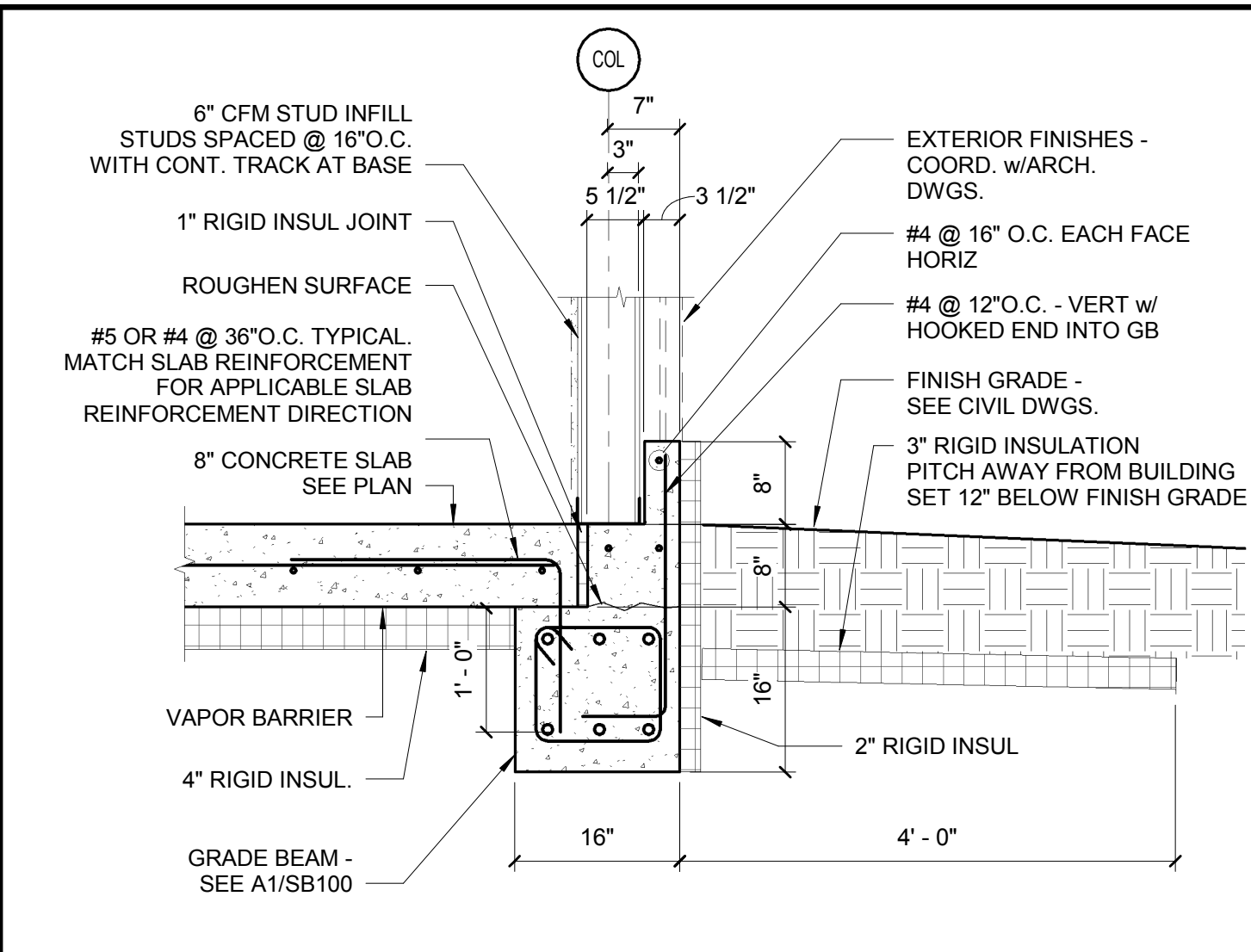
| REVISIONS |          |             |
|-----------|----------|-------------|
| #         | DATE     | DESCRIPTION |
| 1         | 09.14.17 | PERMIT SET  |

|                |          |
|----------------|----------|
| DATE:          | 09.14.17 |
| PROJECT #:     | 010416   |
| DRAWN BY:      | PED      |
| CHECKED BY:    | WPF      |
| DRAWING SCALE: | AS NOTED |

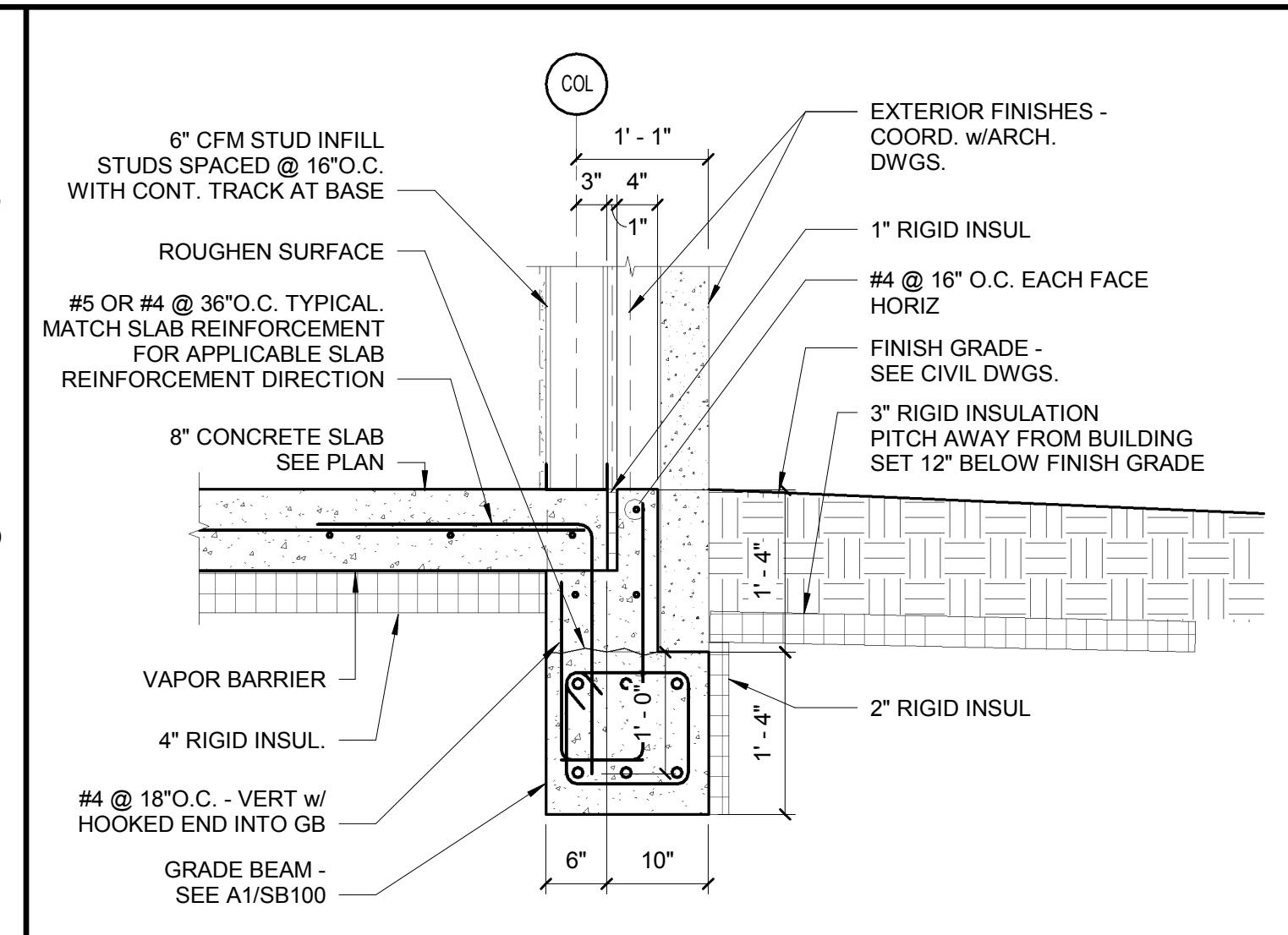
SHEET TITLE  
STRUCTURAL -  
FOUNDATION  
DETAILS

**SB500**

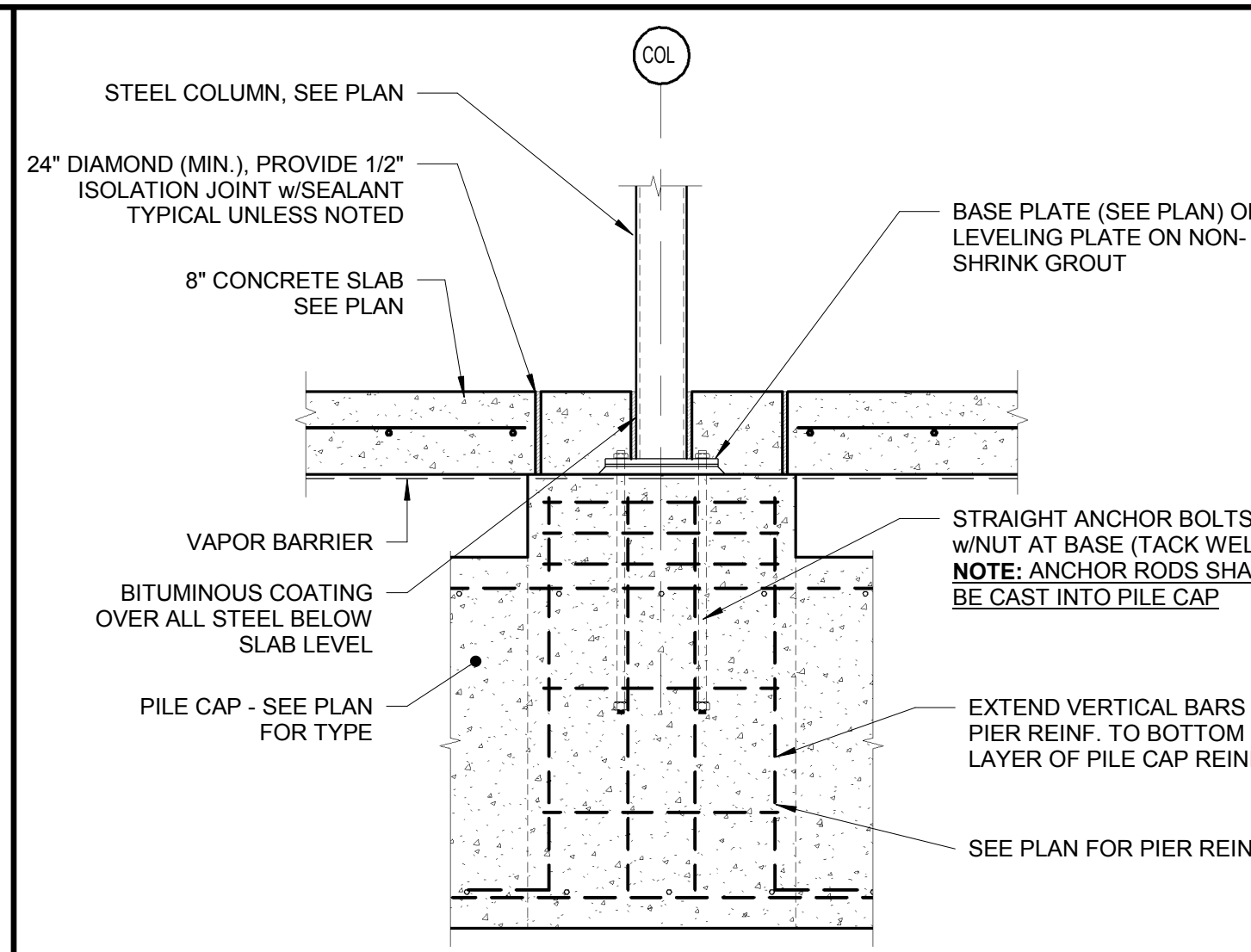
© COPYRIGHT 1985-2017  
REPRODUCTION OR REUSE OF  
THIS DOCUMENT WITHOUT  
THE WRITTEN PERMISSION OF  
GAWRON ARCHITECTS IS PROHIBITED



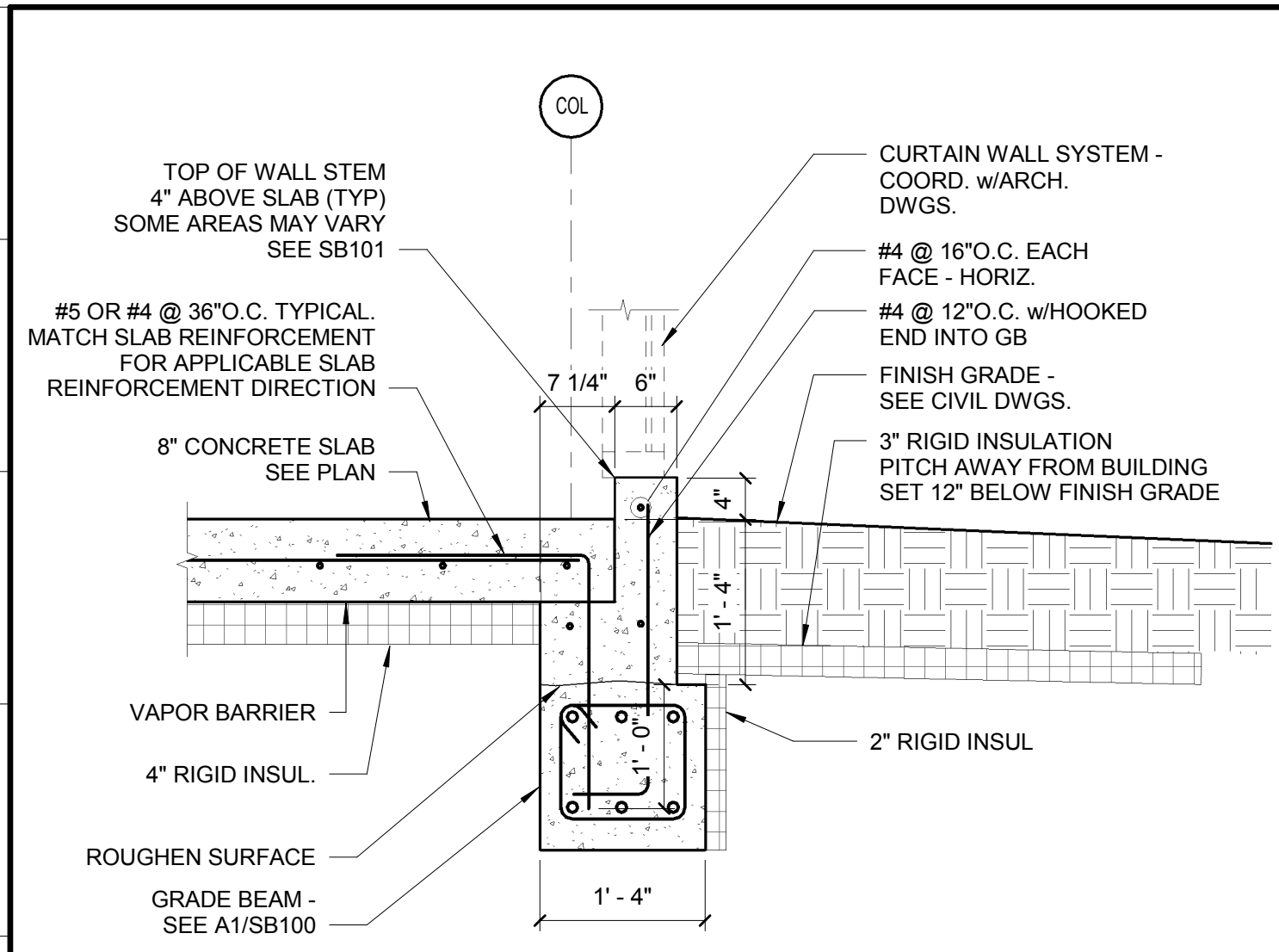
N16 TYPICAL EXTERIOR FOUNDATION WALL AT METAL SIDING  
3/4" = 1'-0"



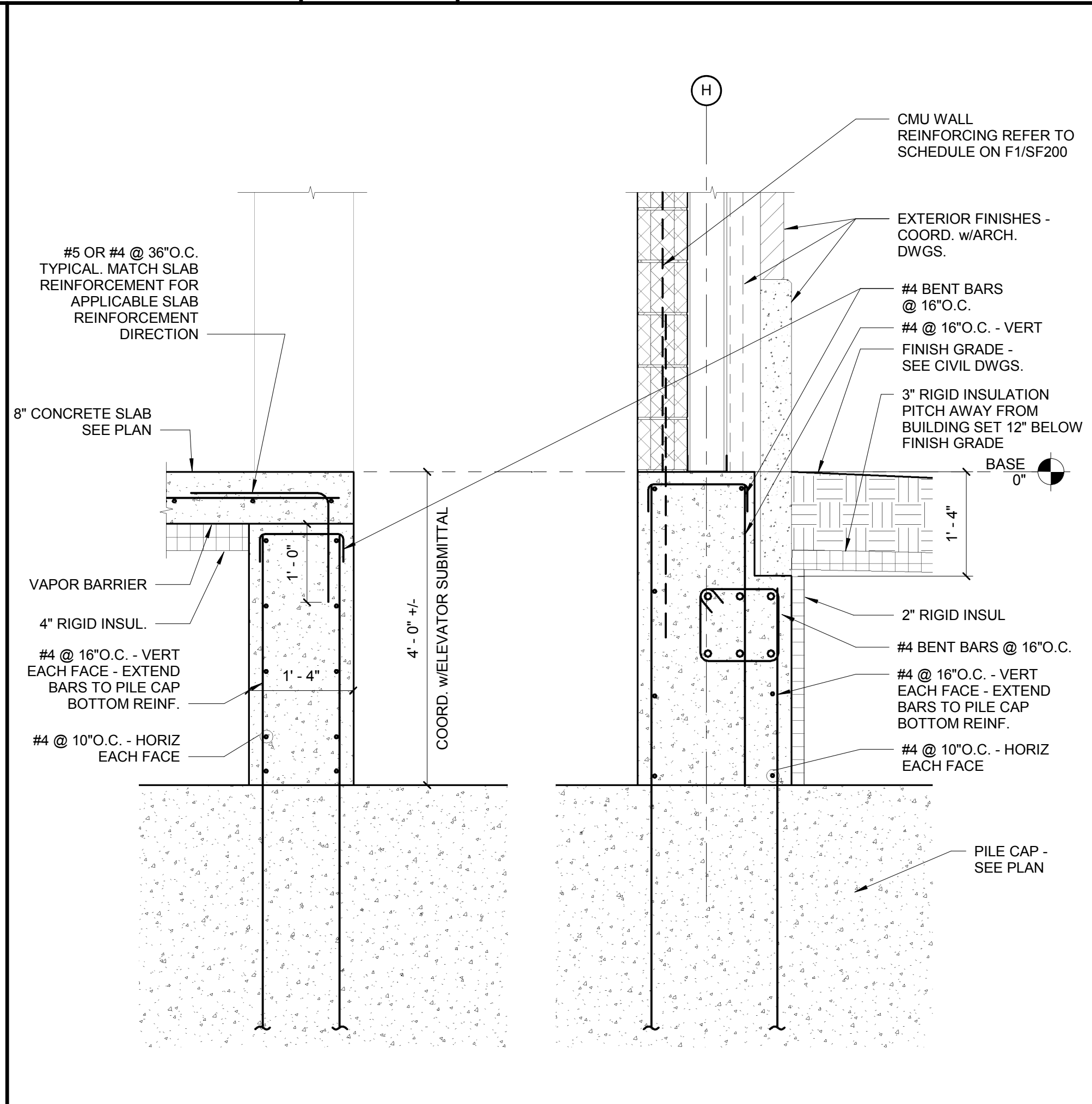
N11 TYPICAL EXTERIOR FOUNDATION WALL AT MASONRY VENEER  
3/4" = 1'-0"



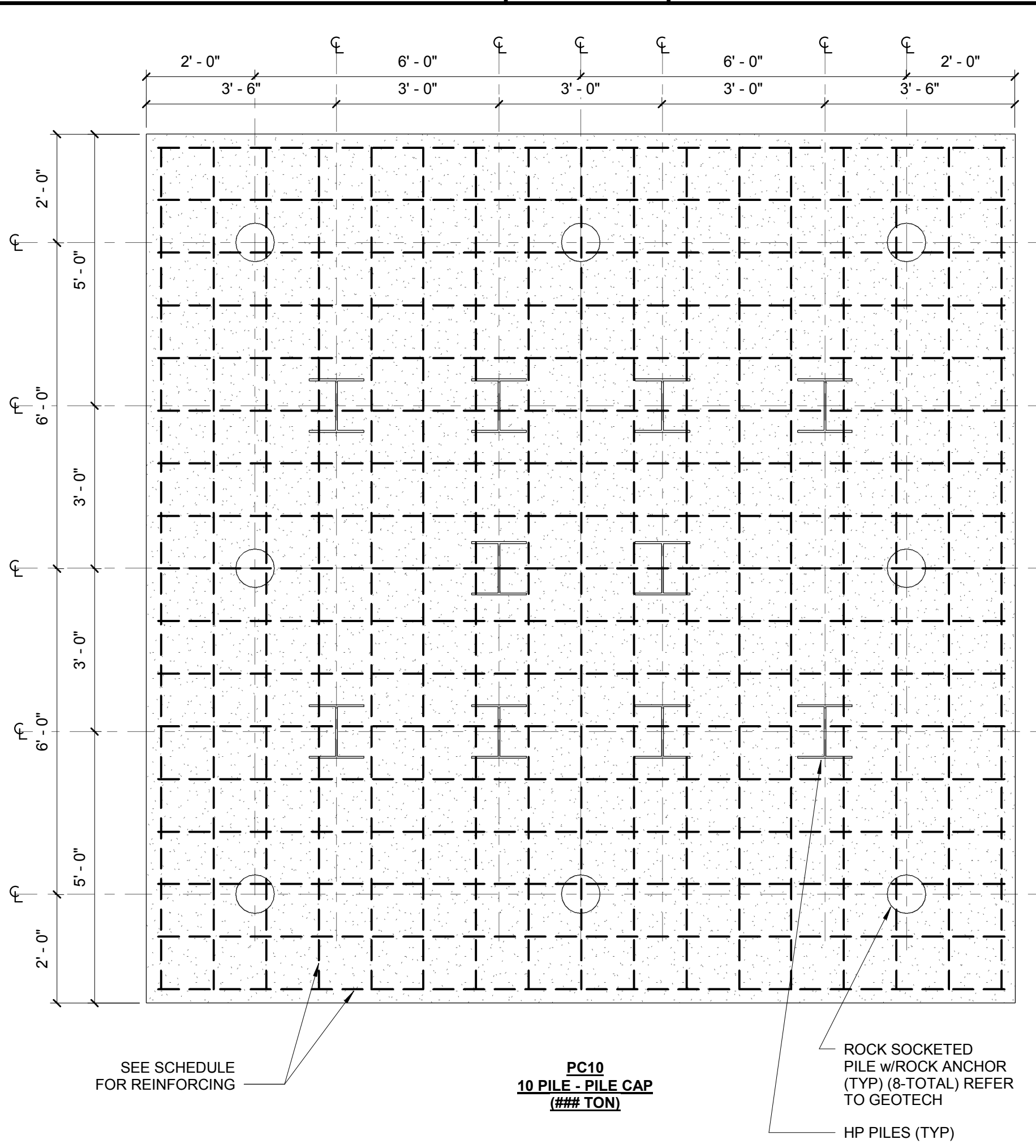
N6 TYPICAL PIER DETAIL  
3/4" = 1'-0"



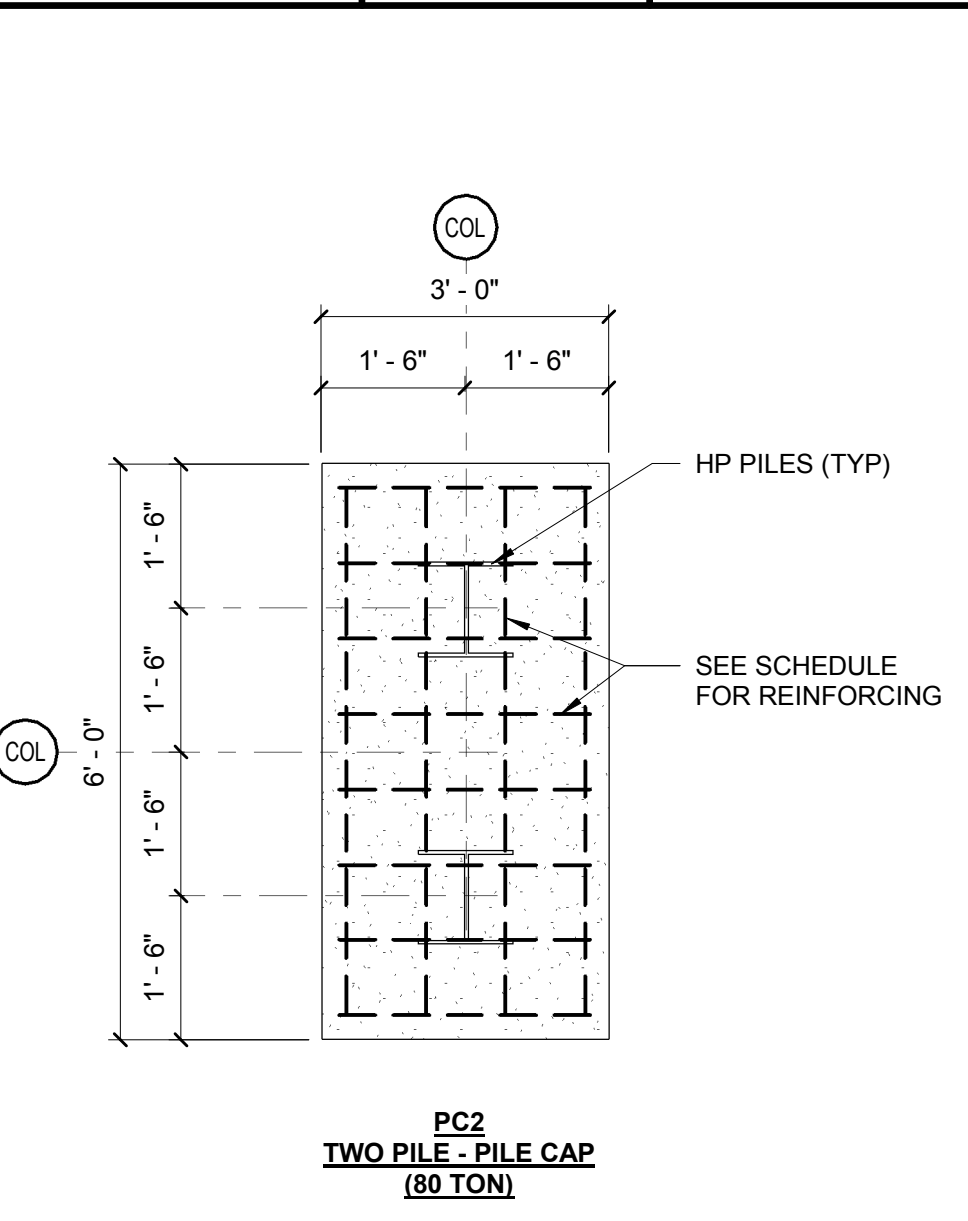
N1 TYPICAL EXTERIOR FOUNDATION WALL AT CWS  
3/4" = 1'-0"



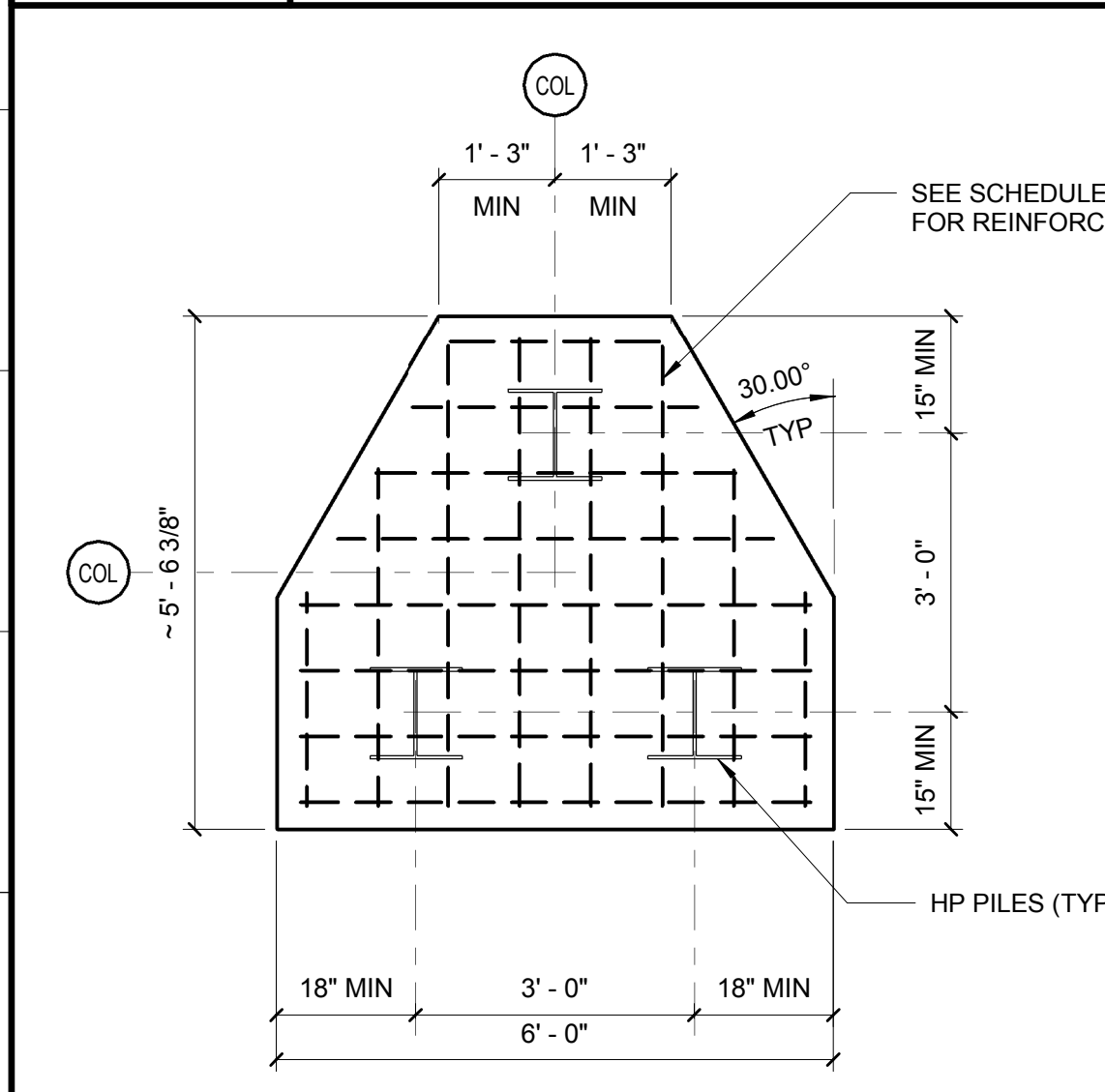
E15 SECTION THRU ELEVATOR PIT  
3/4" = 1'-0"



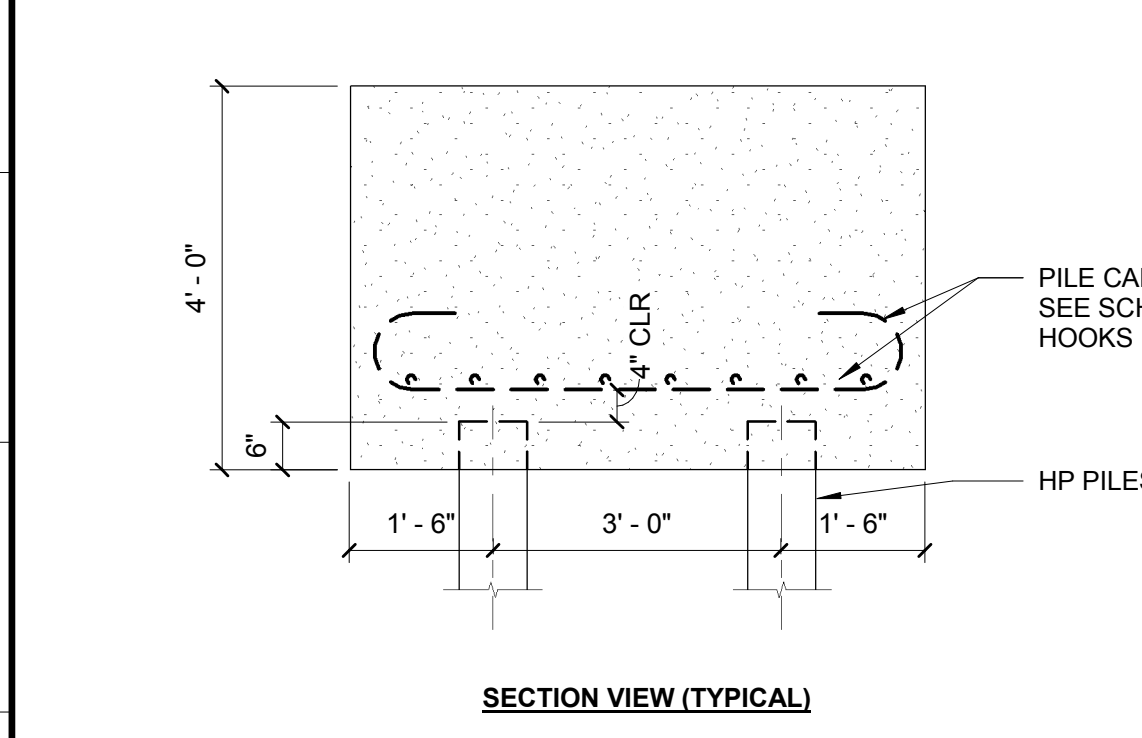
PC10 10 PILE - PILE CAP (### TON)  
SEE SCHEDULE FOR REINFORCING



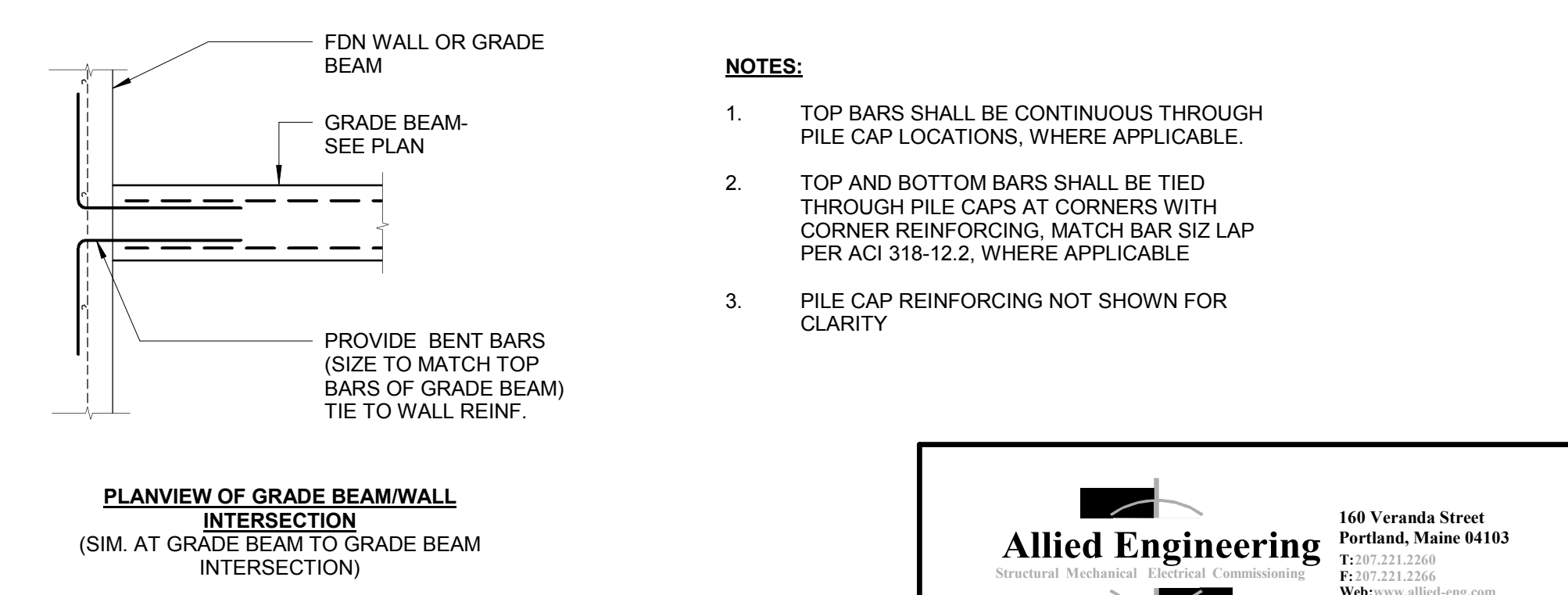
PC2 TWO PILE - PILE CAP (80 TON)  
SEE SCHEDULE FOR REINFORCING



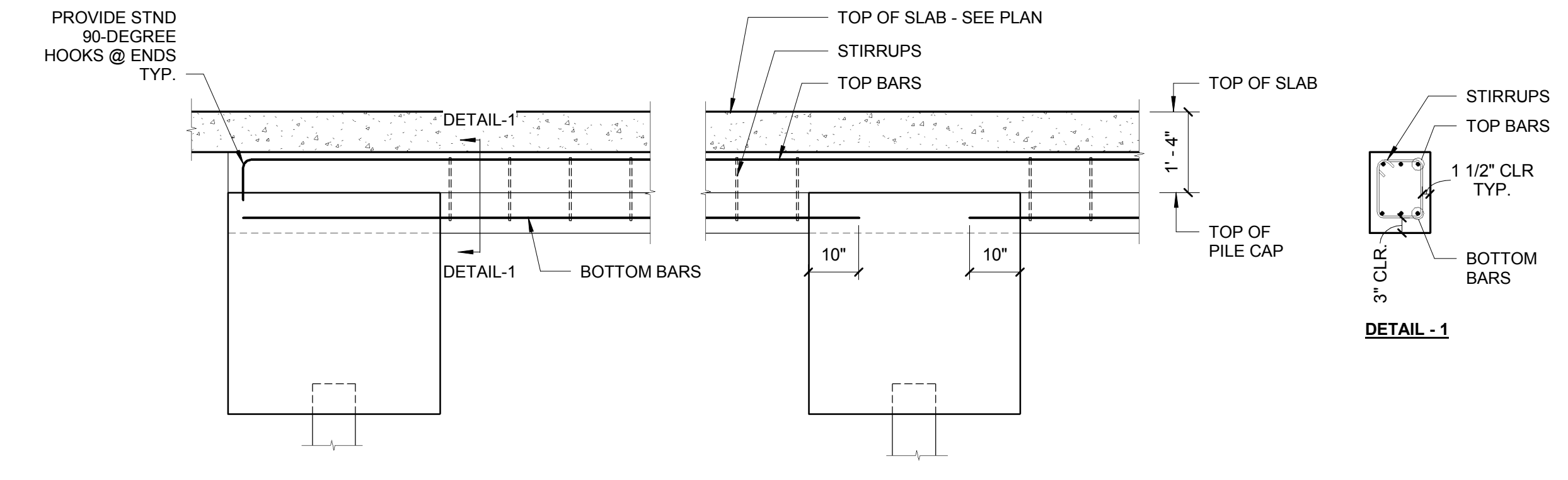
PC3 THREE PILE - PILE CAP (120 TON)  
SEE SCHEDULE FOR REINFORCING



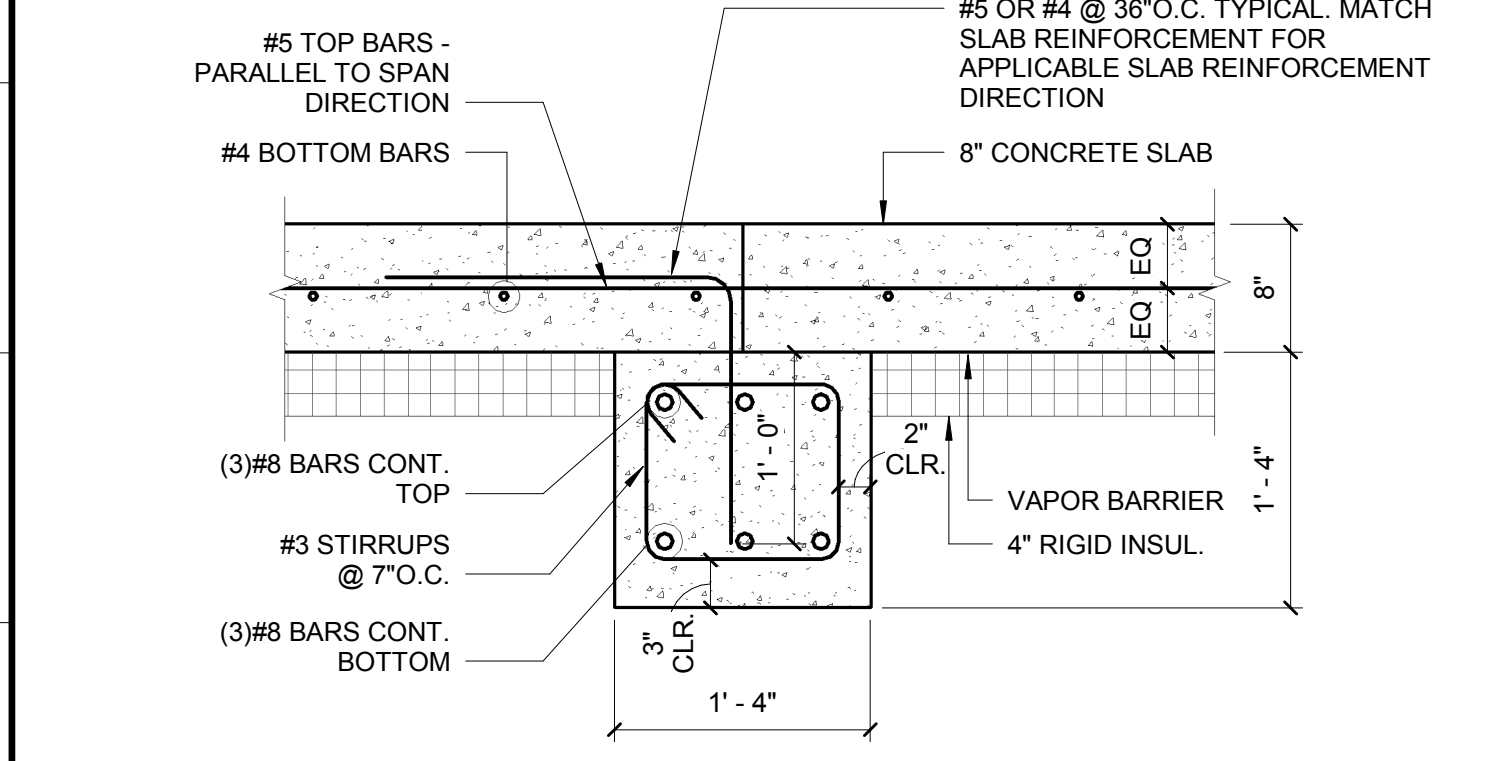
E1 PILE CAP DETAILS  
1/2" = 1'-0"



PLANVIEW OF GRADE BEAM/WALL INTERSECTION (SIM. AT GRADE BEAM TO GRADE BEAM INTERSECTION)



A6 TYPICAL GRADE BEAM DETAILS  
1/2" = 1'-0"



A1 INTERIOR SLAB TO GRADE BEAM DETAIL  
1" = 1'-0"

- NOTES:**
- TOP BARS SHALL BE CONTINUOUS THROUGH PILE CAP LOCATIONS, WHERE APPLICABLE.
  - TOP AND BOTTOM BARS SHALL BE TIED THROUGH PILE CAPS AT CORNERS WITH CORNER REINFORCING, MATCH BAR SIZ LAP PER ACI 318-12.2, WHERE APPLICABLE
  - PILE CAP REINFORCING NOT SHOWN FOR CLARITY

**Allied Engineering**  
Structural Mechanical Electrical Commissioning  
160 Veranda Street  
Portland, Maine 04103  
Tel: 207.231.2266  
Fax: 207.231.2266  
Web: www.allied-eng.com

9/15/2017 7:33:28 AM PED