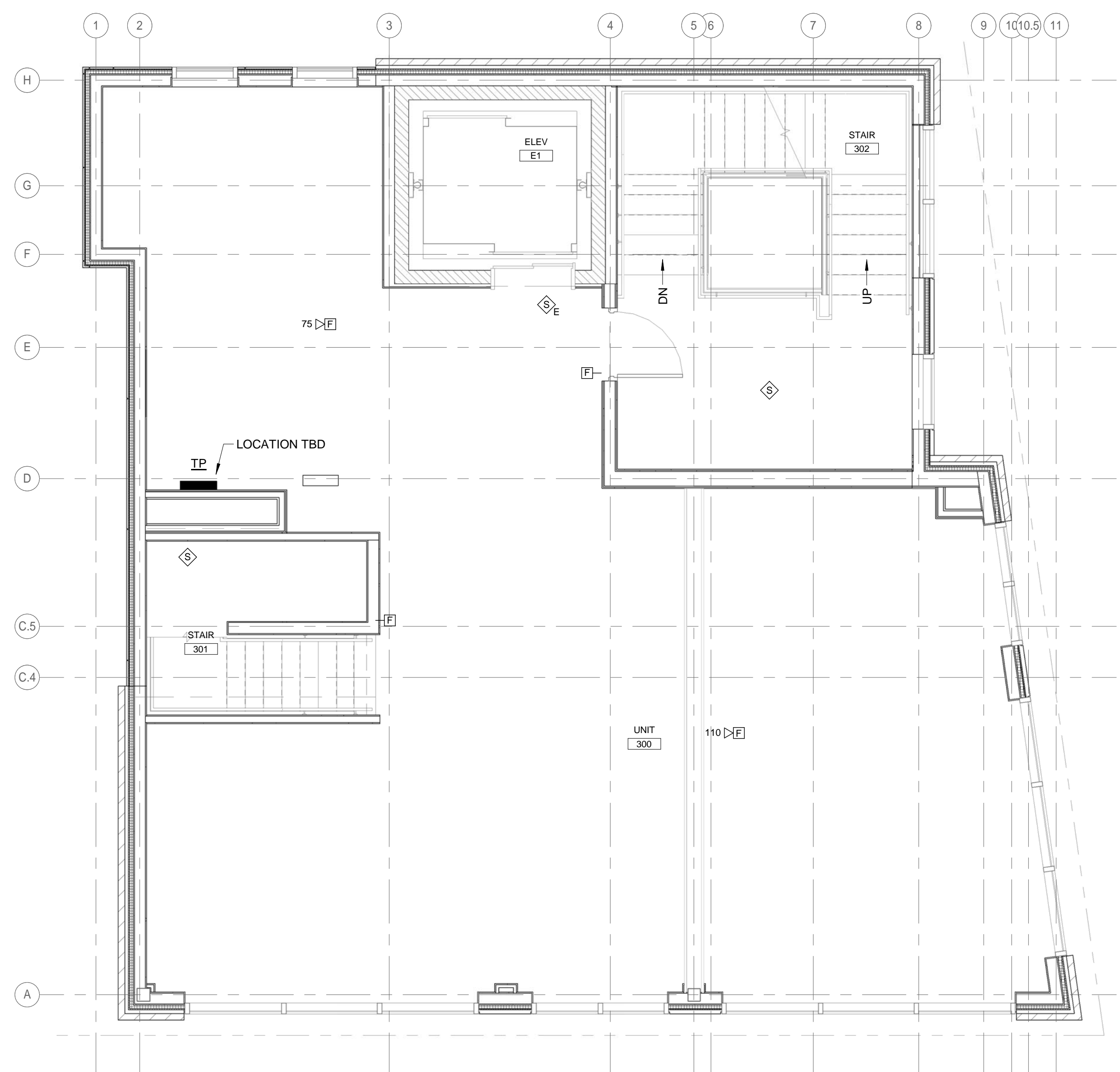
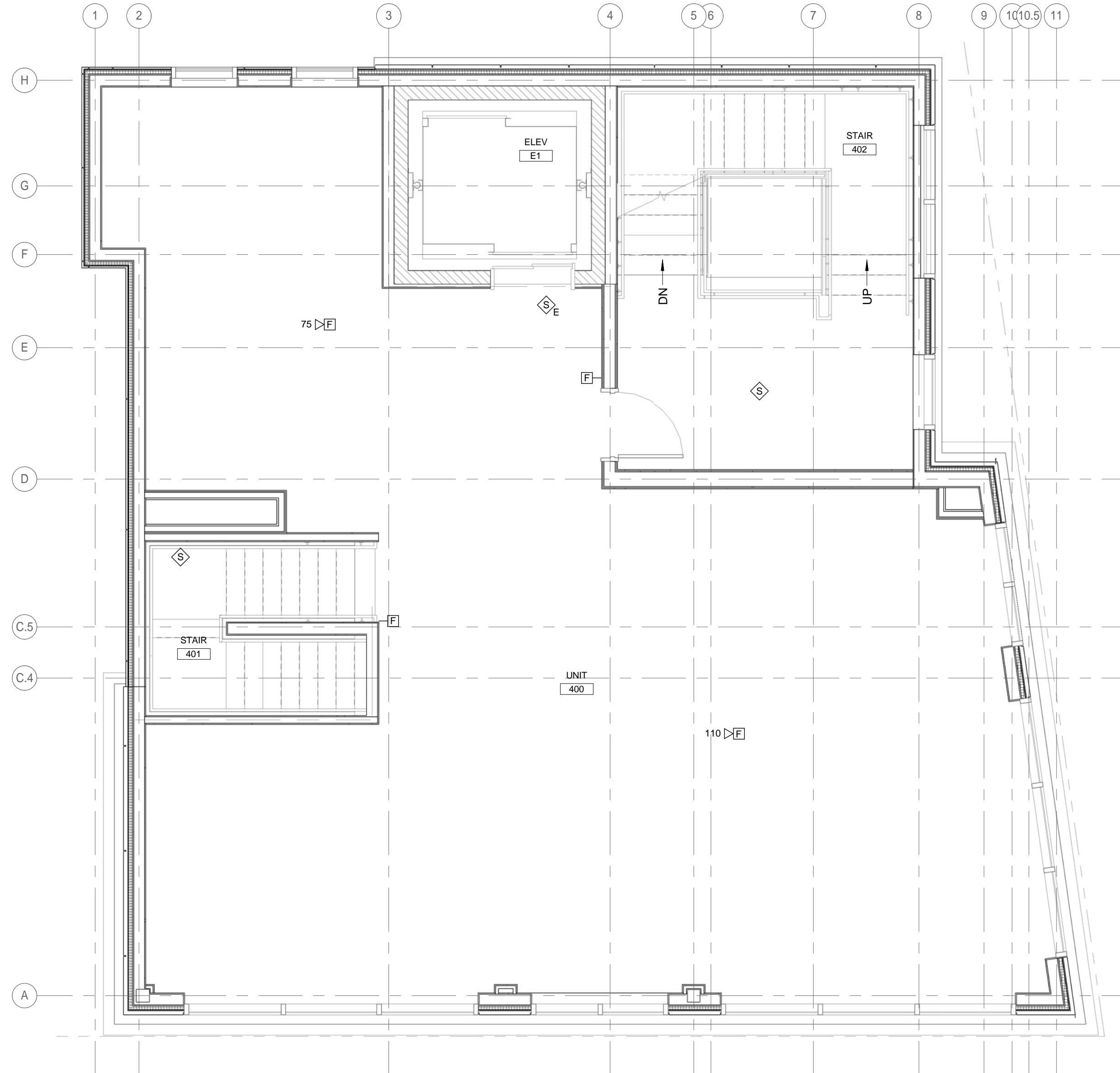


9/14/2017 1:43:41 PM GMC



A1
LEVEL 3 FIRE ALARM PLAN
1/4" = 1'-0"



A11
LEVEL 4 FIRE ALARM PLAN
1/4" = 1'-0"

Allied Engineering
Structural Mechanical Electrical Commissioning
160 Veranda Street
Portland, Maine 04103
T: 207-221-2200
F: 207-221-2266
Web: www.allied-eng.com

AEI PROJECT NO.: 16025 CAD FILE: 16025_E.rvt

29 BLACK POINT ROAD
SCARBOROUGH, MAINE 04074
207-883-4307
WWW.GAWRONTURGEON.COM

**GAWRON
TURGEON
ARCHITECTS, P.C.**

cPort Credit Union
50 India Street
Portland, Maine

REVISIONS	
#	DATE DESCRIPTION
1	09.14.17 PERMIT SET NOT FOR CONSTRUCTION

DATE:	09.14.17
PROJECT #	010416
DRAWN BY:	GMC
CHECKED BY:	SRM
DRAWING SCALE	AS NOTED

SHEET TITLE
ELECTRICAL THIRD
AND FOURTH
FLOOR FIRE ALARM
PLANS

FA102

© COPYRIGHT 1985-2017
REPRODUCTION OR REUSE OF
THIS DOCUMENT WITHOUT
GAWRON ARCHITECTS IS PROHIBITED