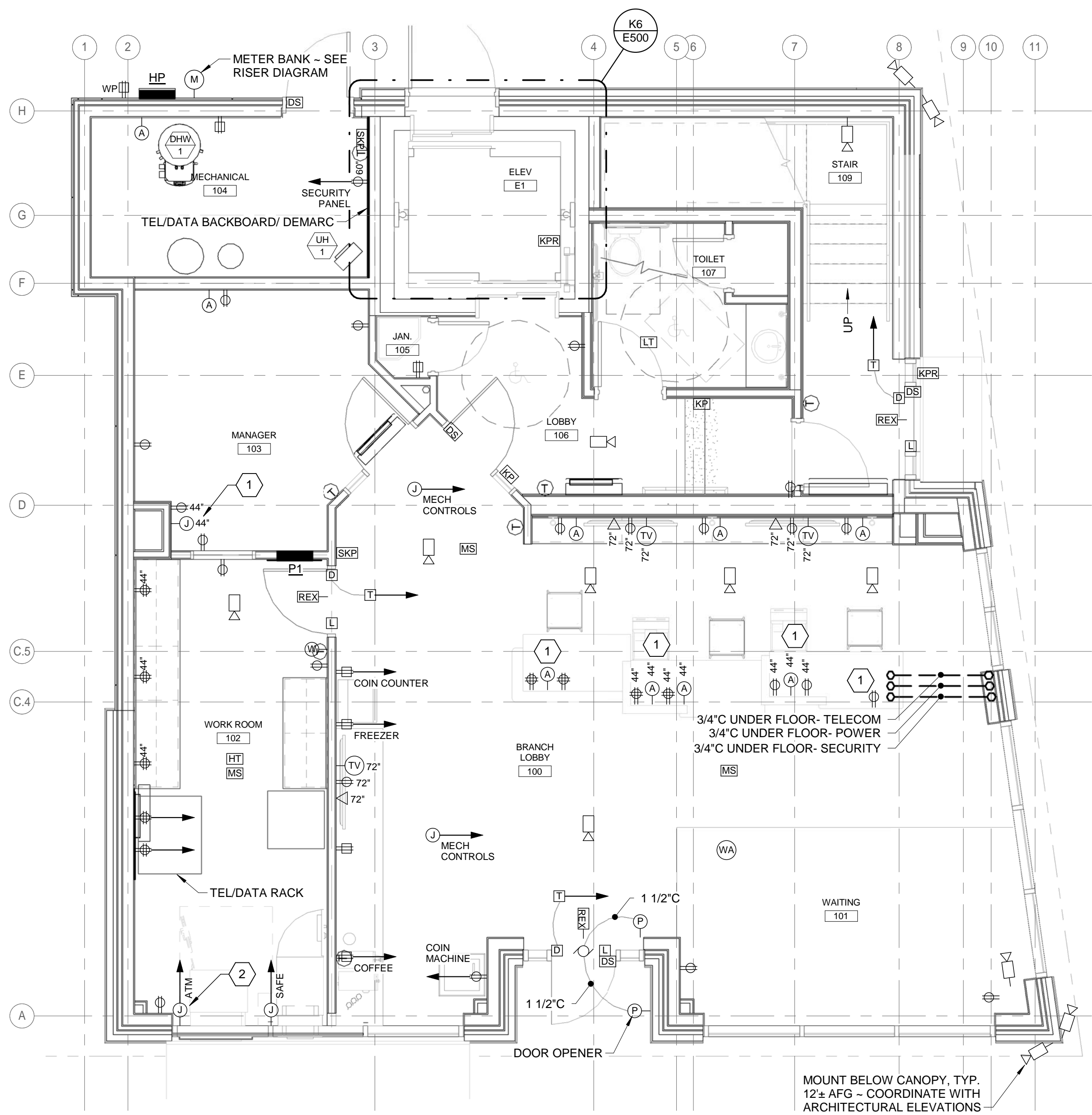
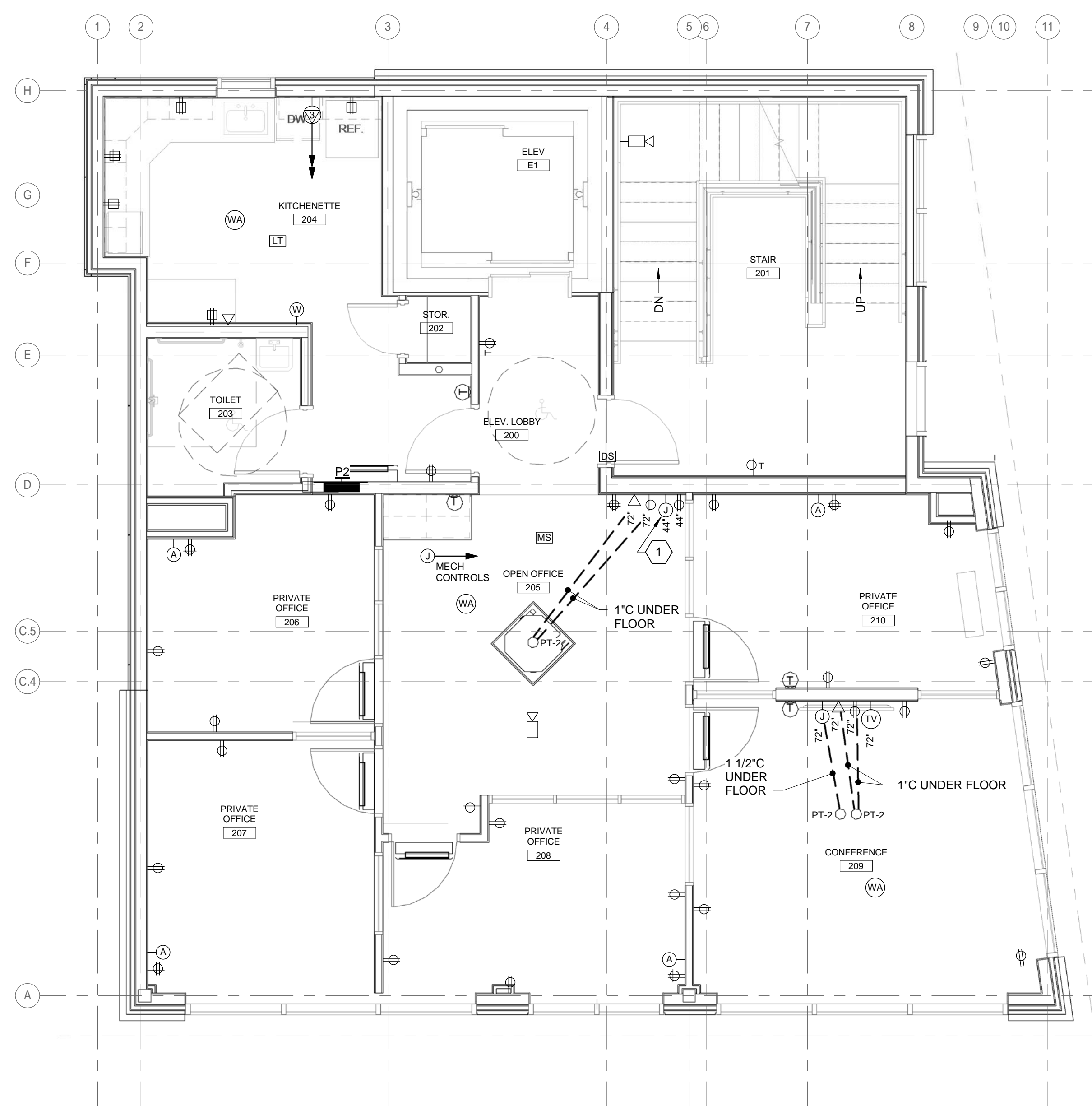


- 1 PROVIDE JUNCTION BOX AND EMPTY 3/4" CONDUIT WITH PULLSTRING TO TEL/DATA RACK.
- 2 PROVIDE JUNCTION BOX AND EMPTY 3/4" CONDUIT WITH PULLSTRING TO SECURITY PANEL.
- 3 MOUNT ITEM(S) INSIDE SYSTEM FURNITURE.

O1 KEYNOTES



A1 LEVEL 1 POWER AND SYSTEMS PLAN
1/4" = 1'-0"



A11 LEVEL 2 POWER AND SYSTEMS PLAN
1/4" = 1'-0"

29 BLACK POINT ROAD
SCARBOROUGH, MAINE 04074
207-883-4307
WWW.GAWRONTURGEON.COM

**GAWRON
TURGEON**
ARCHITECTS, P.C.

cPort Credit Union
50 India Street
Portland, Maine

REVISIONS

#	DATE	DESCRIPTION
1	09.14.17	PERMIT SET NOT FOR CONSTRUCTION

DATE:	09.14.17
PROJECT #	010416
DRAWN BY:	GMC
CHECKED BY:	SRM
DRAWING SCALE	AS NOTED

SHEET TITLE

ELECTRICAL FIRST AND SECOND FLOOR POWER & SYSTEMS PLANS

EP101

© COPYRIGHT 1985-2017
REPRODUCTION OR REUSE OF
THIS DOCUMENT WITHOUT
WRITTEN PERMISSION OF
GAWRON ARCHITECTS IS PROHIBITED

Allied Engineering
Structural Mechanical Electrical Commissioning
160 Veranda Street
Portland, Maine 04103
Tel: 207-221-2299
Fax: 207-221-2266
Web: www.allied-eng.com

AEI PROJECT NO.: 16025 CAD FILE: 16025_E.rvt