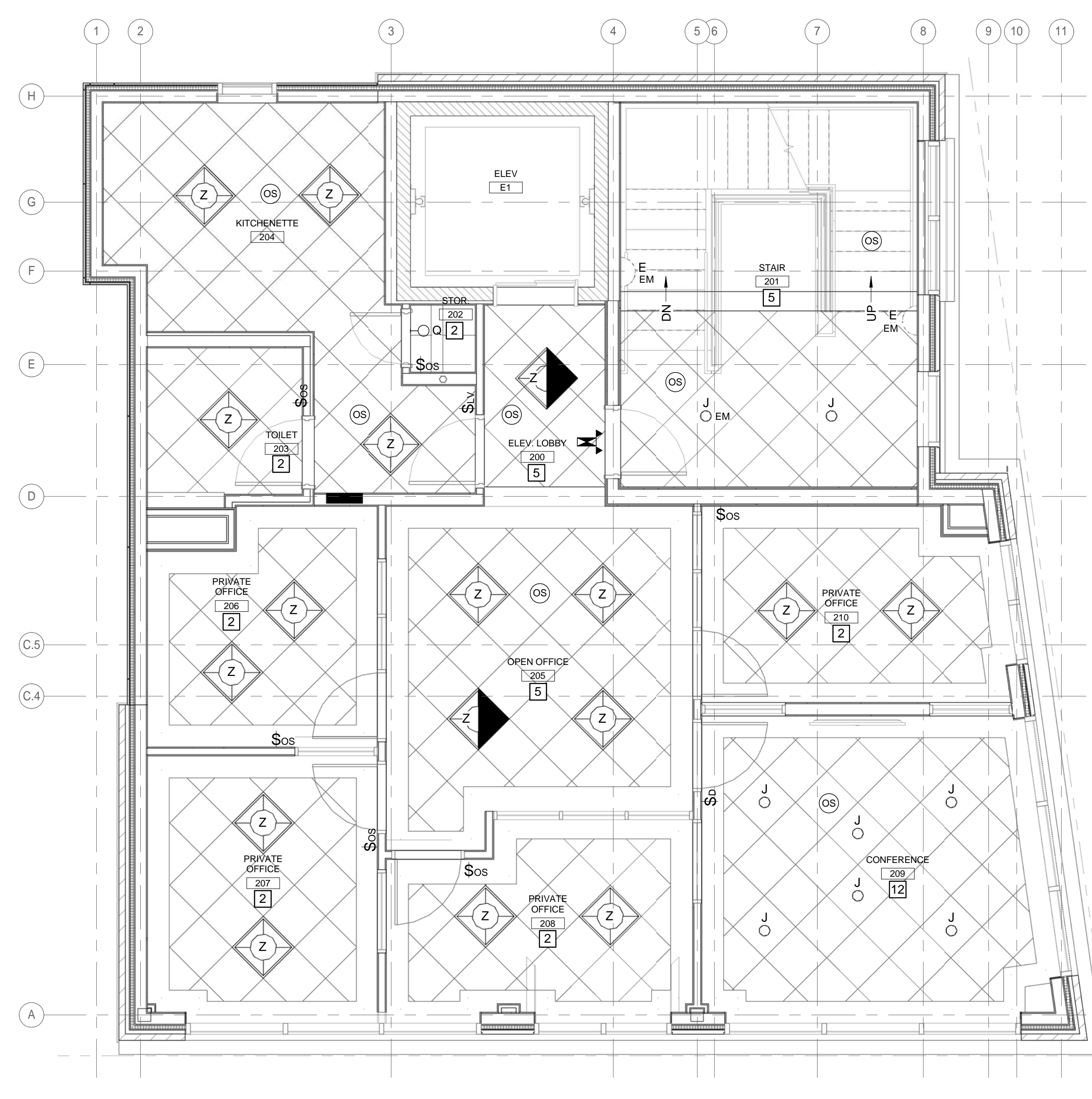
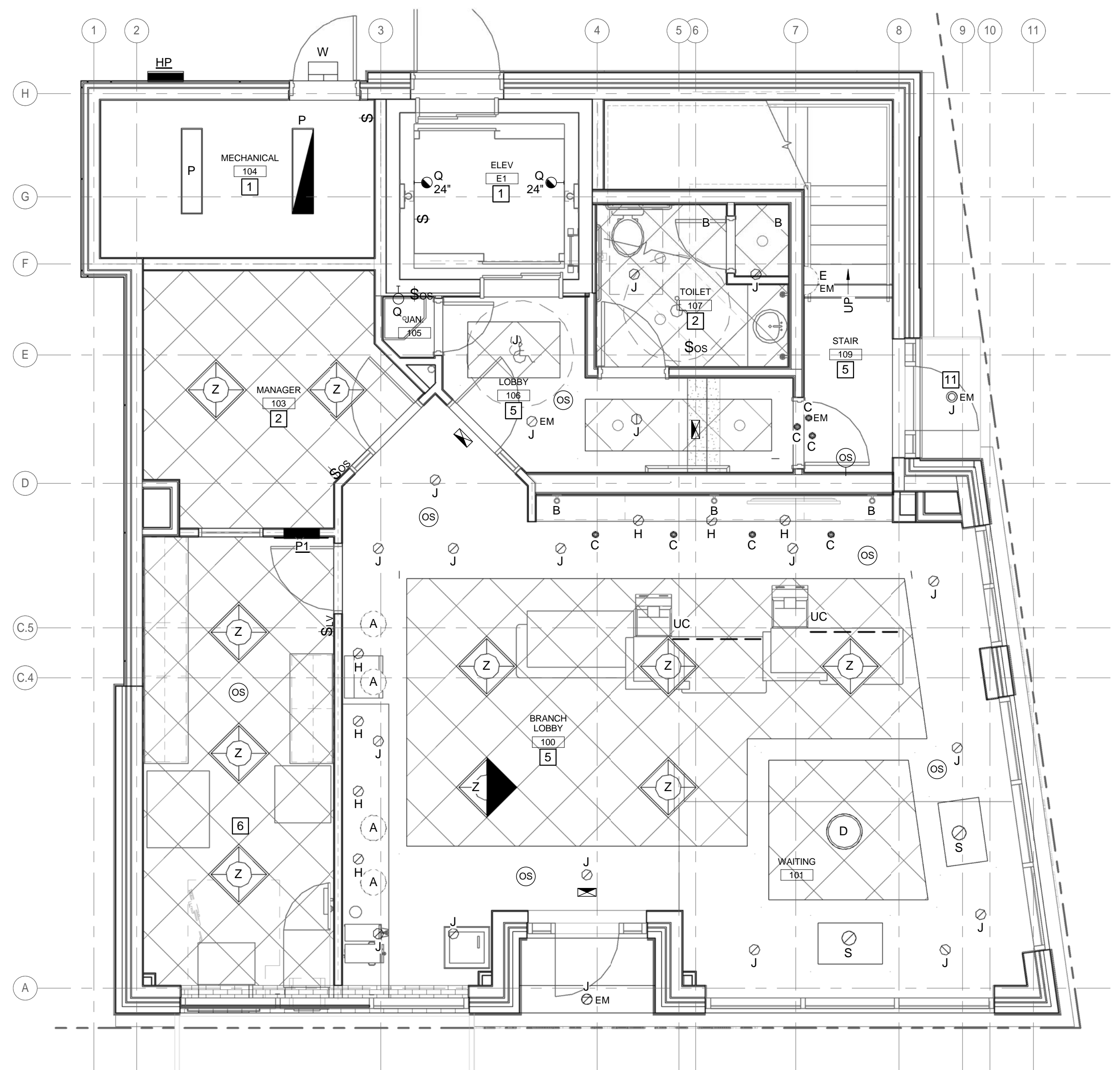


LIGHTING CONTROL NOTES SCHEDULE		
TAG/ NOTE	DESCRIPTION OF LIGHTING CONTROL DEVICES AND OPERATION	DETAIL NUMBER
1	WALL SWITCH - MANUAL ON/MANUAL OFF	NO DETAIL
2	WALL SWITCH WITH OCCUPANCY SENSOR - MANUAL ON AND OFF/AUTO OFF	NO DETAIL
3	WALL SWITCH - MANUAL ON AND OFF; AUTO OFF VIA OCCUPANCY SENSORS; DIMMING VIA DAYLIGHT HARVESTING SENSOR FOR FIXTURES INDICATED	
4	LIGHTING CONTROLLED BY LCP - REFER TO LIGHTING CONTROL PANEL SCHEDULE	NO DETAIL
5	AUTO ON/AUTO OFF VIA OCCUPANCY SENSOR(S)	
6	WALL SWITCHES) - MANUAL ON AND OFF; AUTO OFF VIA OCCUPANCY SENSOR(S)	
7	WALL SWITCH WITH DIMMER AND OCCUPANCY SENSOR - MANUAL ON AND OFF/MANUAL DIMMING/AUTO OFF	NO DETAIL
8	WALLSTATION(S) - MANUAL ON AND OFF - WHERE NOTED ON PLANS; WALLSTATION(S) WITH DIMMER(S) - MANUAL ON AND OFF/MANUAL DIMMING; AUTO OFF VIA OCCUPANCY SENSORS	
9	NOT USED	
10	WALLSTATION(S) - MANUAL ON AND OFF - WHERE NOTED ON PLANS; WALLSTATION(S) WITH DIMMER(S) - MANUAL ON AND OFF/MANUAL DIMMING; AUTO OFF VIA OCCUPANCY SENSORS; DIMMING VIA DAYLIGHT HARVESTING SENSOR FOR FIXTURES INDICATED	
11	PHOTOCELL CONTROLLED	
12	WALL SWITCH - MANUAL ON AND OFF; WALL SWITCH WITH MANUAL DIMMER-RAISE, LOWER, AND ON/OFF; AUTO OFF VIA OCCUPANCY SENSORS	
13	AUTO ON/OFF VIA OCCUPANCY SENSORS; DIMMING VIA DAYLIGHT HARVESTING SENSOR FOR FIXTURES INDICATED	
14	LIGHTING SHALL BE CONTROLLED BY DIMMING RACK	



29 BLACK POINT ROAD
SCARBOROUGH, MAINE 04074
207-883-4307
WWW.GAWRONTURGEON.COM

**GAWRON
TURGEON
ARCHITECTS, P.C.**

cPort Credit Union
50 India Street
Portland, Maine

REVISIONS	
#	DATE DESCRIPTION
1	09.14.17 PERMIT SET NOT FOR CONSTRUCTION

DATE:	09.14.17
PROJECT #	010416
DRAWN BY:	GMC
CHECKED BY:	SRM
DRAWING SCALE	AS NOTED

SHEET TITLE
ELECTRICAL FIRST AND SECOND FLOOR LIGHTING PLANS

EL101

© COPYRIGHT 1985-2017
REPRODUCTION OR REUSE OF
THIS DOCUMENT WITHOUT
WRITTEN PERMISSION OF
GAWRON ARCHITECTS IS PROHIBITED

Allied Engineering
Structural Mechanical Electrical Commissioning
160 Veranda Street
Portland, Maine 04103
T: 207-221-2299
F: 207-221-2266
Web: www.allied-eng.com

AEI PROJECT NO.: 16025 CAD FILE: 16025_E.rvt

9/14/2017 1:42:58 PM GMC

A1 1ST FLOOR LIGHTING PLAN
1/4" = 1'-0"

A11 2ND FLOOR LIGHTING PLAN
1/4" = 1'-0"