

29 BLACK POINT ROAD
SCARBOROUGH, MAINE 04074
207-883-4307
WWW.GAWRONTURGEON.COM

**GAWRON
TURGEON**
ARCHITECTS, P.C.

cPort Credit Union
35 Middle & 50 India Street
Portland, Maine

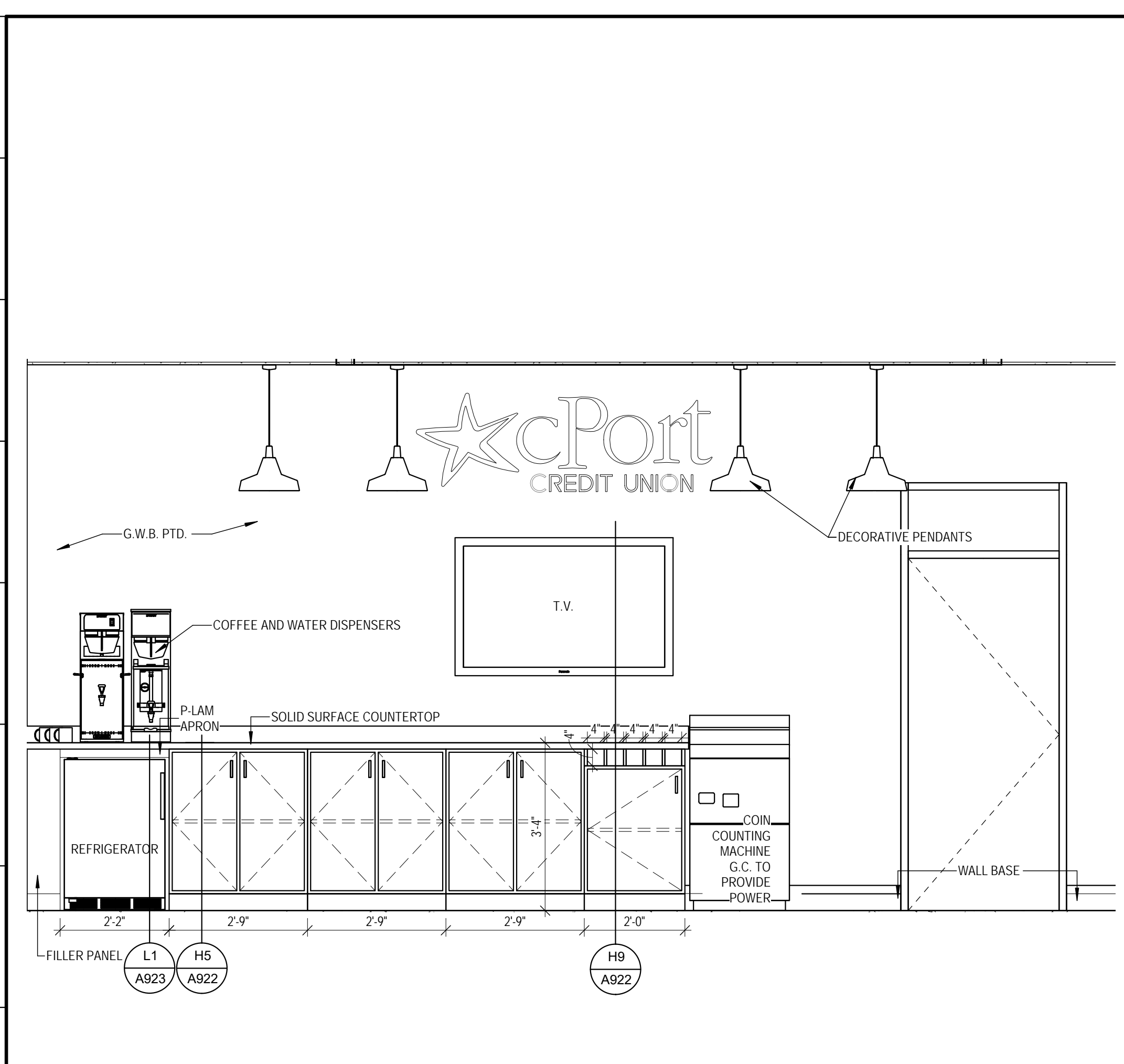
REVISIONS		
#	DATE	DESCRIPTION
A	09.14.17	PERMIT SET

DATE:	09.14.17
PROJECT #:	010416
DRAWN BY:	DP
CHECKED BY:	SWG
DRAWING SCALE:	1/2" = 1'-0"

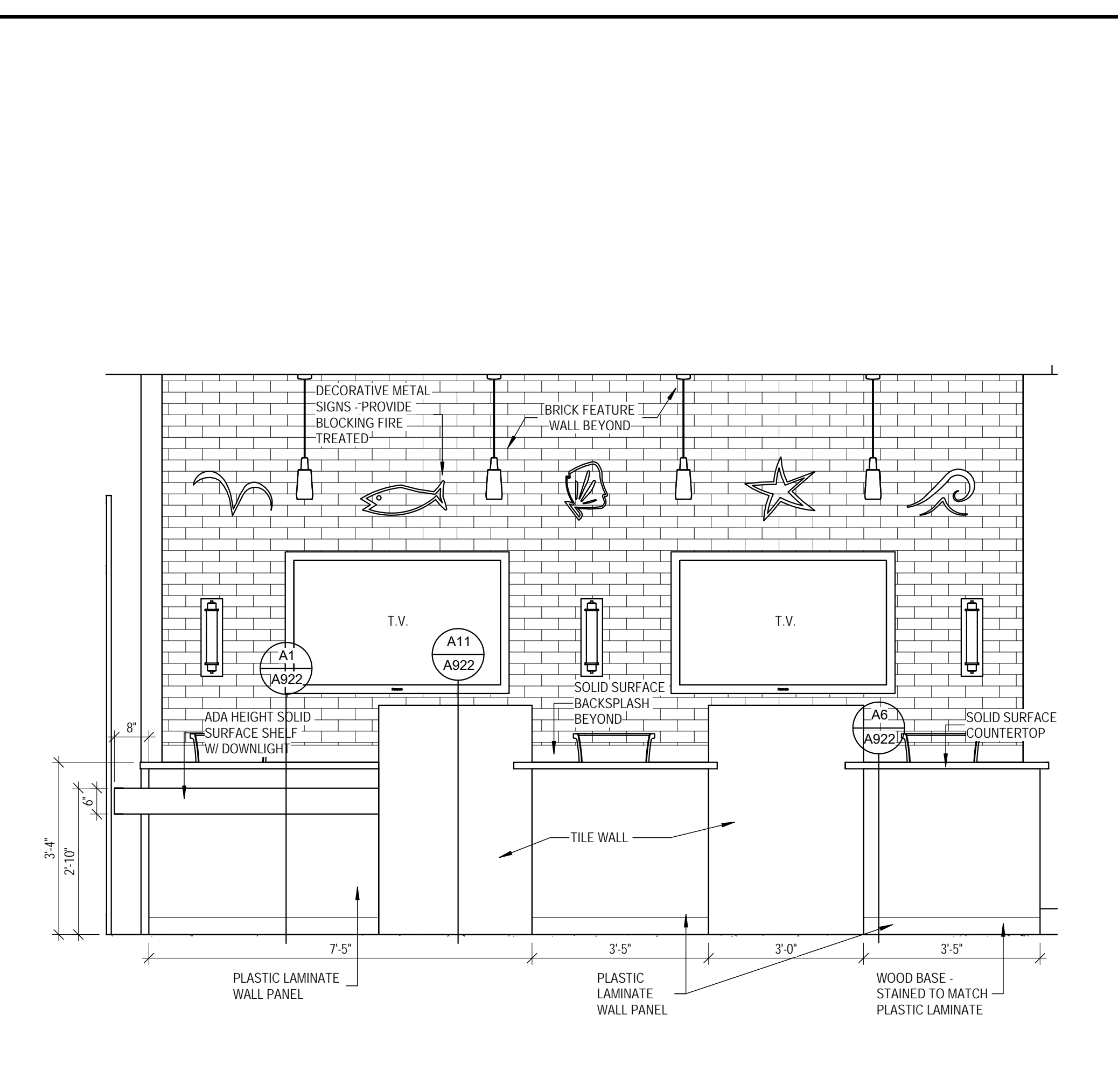
SHEET TITLE
INTERIOR ELEVATIONS

A920

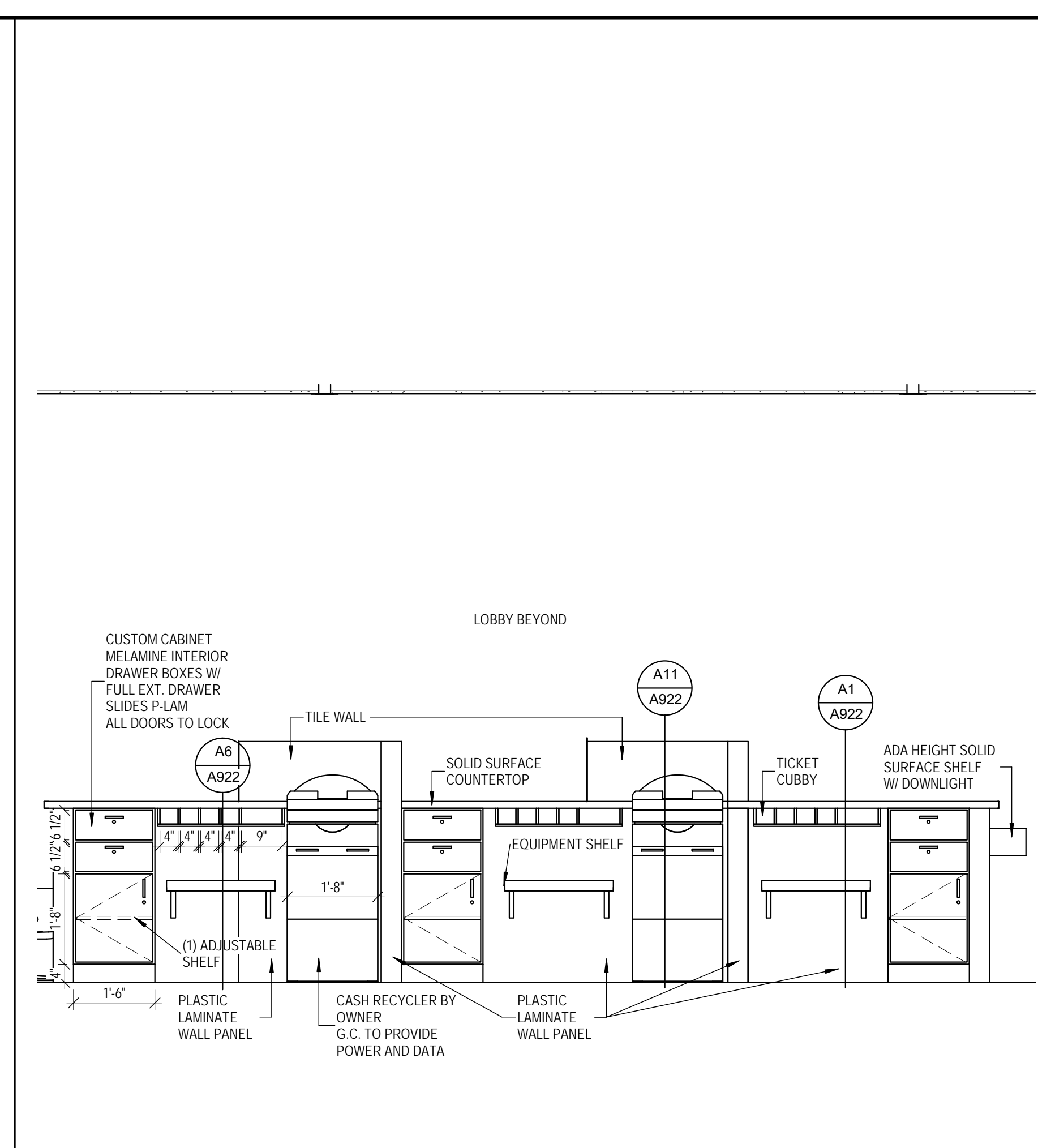
© COPYRIGHT 1985-2017
REPRODUCTION OR REUSE OF
THIS DOCUMENT WITHOUT
THE WRITTEN PERMISSION OF
GAWRON ARCHITECTS IS PROHIBITED



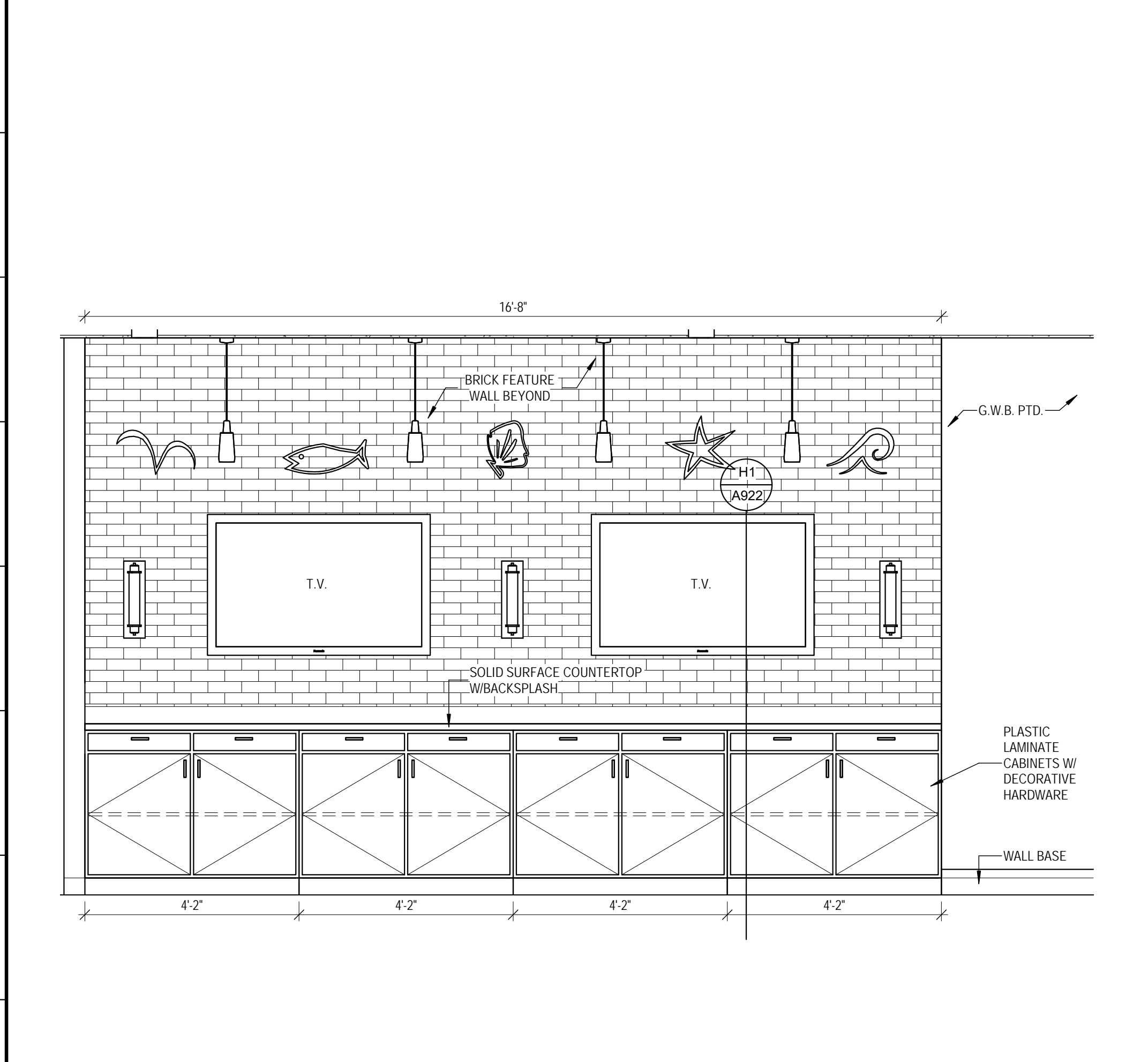
J1 CHECK WRITING COUNTER ELEVATION
1/2" = 1'-0"



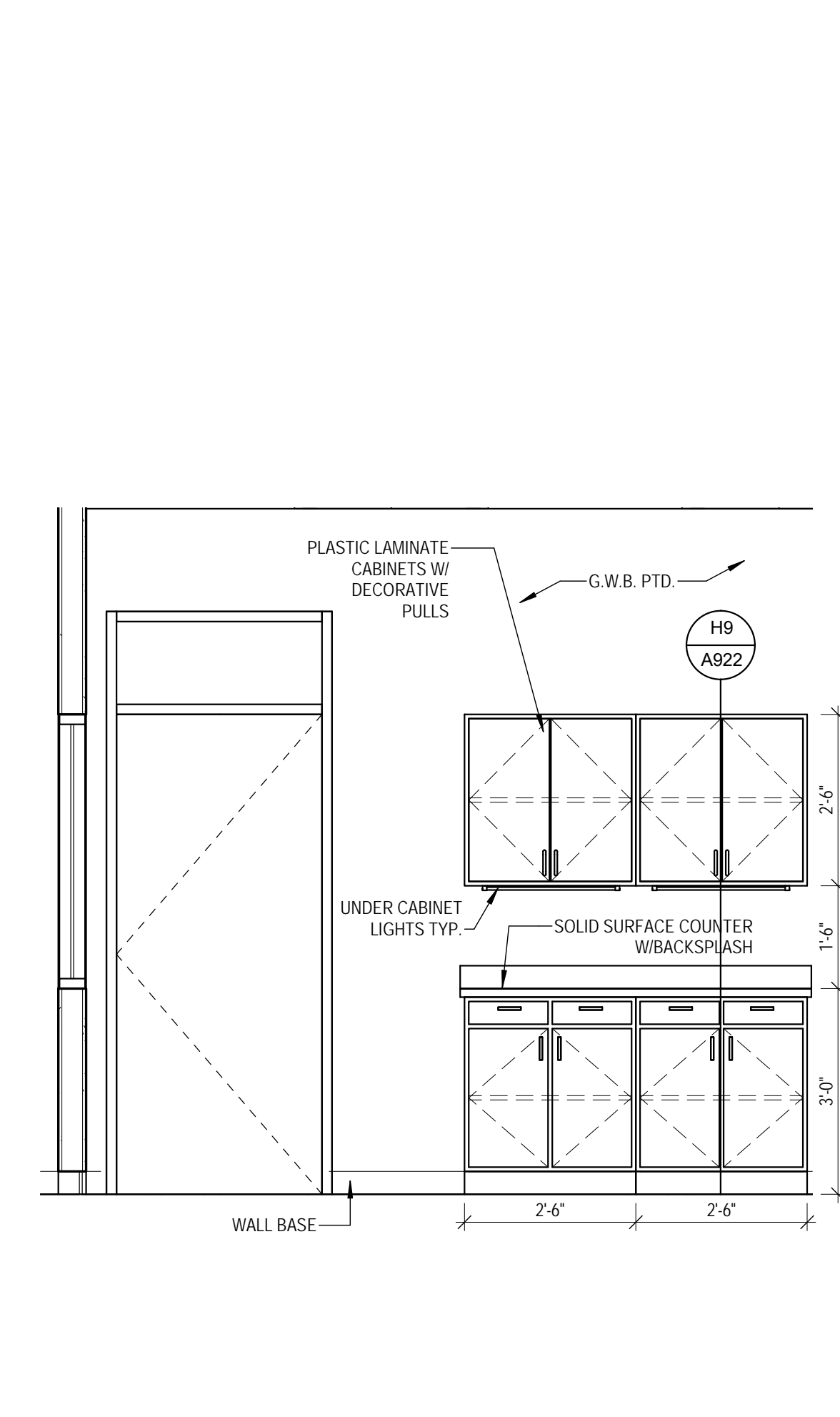
J8 TELLER POD FRONT ELEVATION
1/2" = 1'-0"



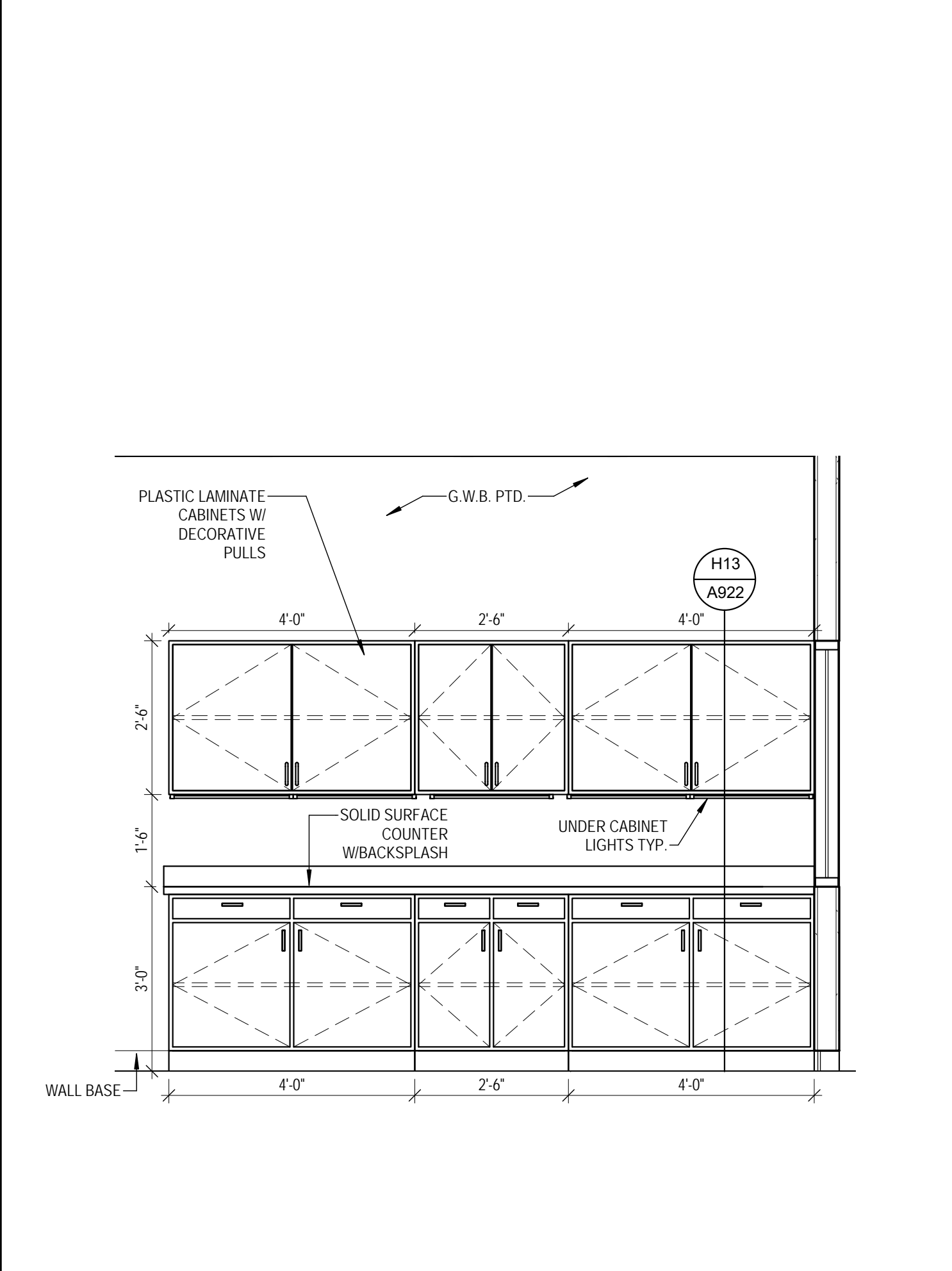
J15 TELLER POD BACK ELEVATION
1/2" = 1'-0"



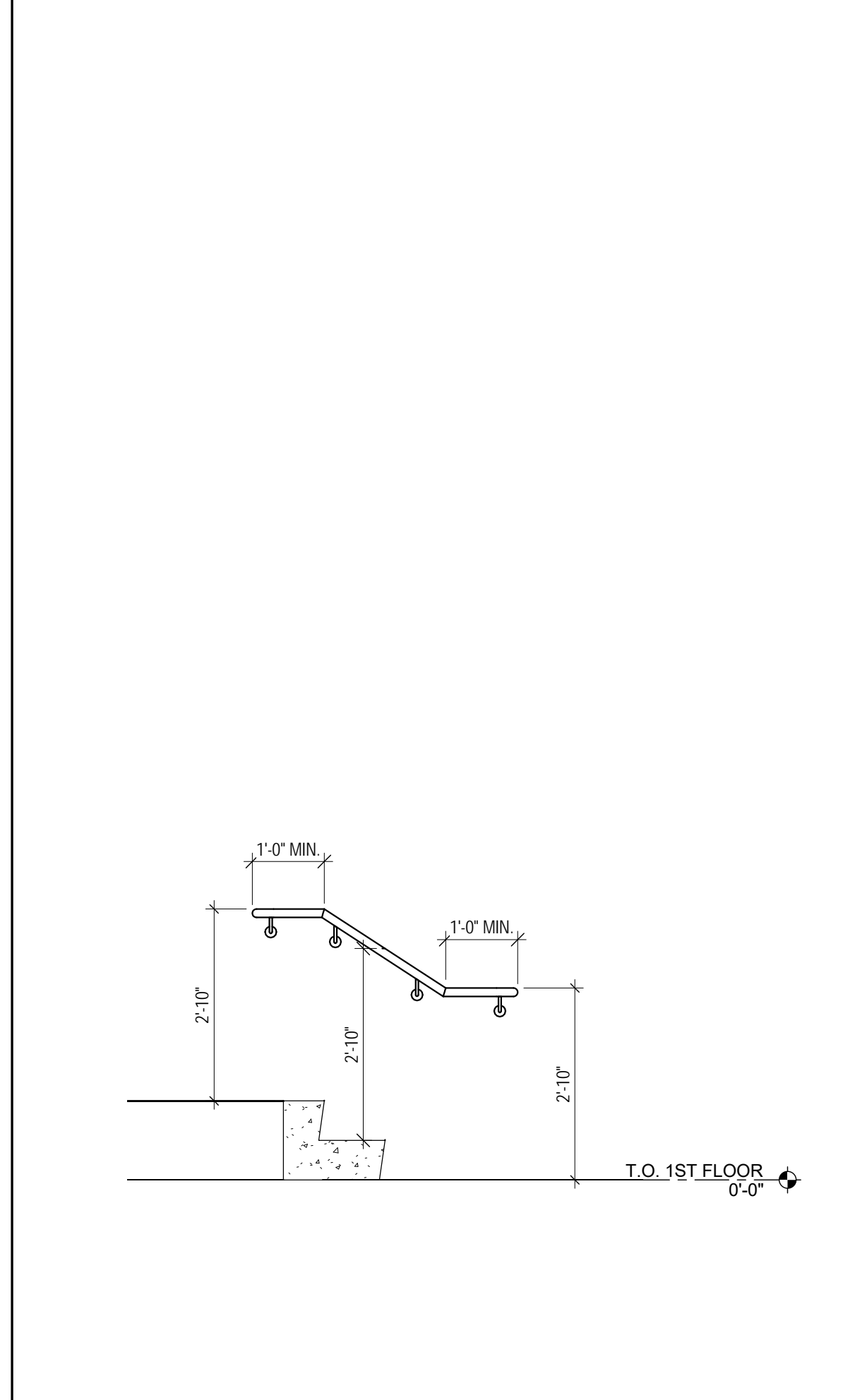
A1 TELLER BACK COUNTER ELEVATION
1/2" = 1'-0"



A8 WORKROOM EAST ELEVATION
1/2" = 1'-0"



A12 WORKROOM WEST ELEVATION
1/2" = 1'-0"



A17 STAIR RAILING ELEVATION
1/2" = 1'-0"

9/18/2017 8:22:13 AM DP