



DATE OF APPROVAL May 24, 2016

PLANNER Caitlin Cameron

PROJECT NO. 2016-052

Product: **Duro Downturn Rack**  
As manufactured by Duro Bike Racks  
Capacity: **2 Bikes**  
Material: **2" x 2" x 3/16" tube**  
Finish: **Black**

Our powder coat finish assures a high level of adhesion and durability by following these steps:  
1. Sandblast  
2. Iron phosphate pretreatment  
3. Epoxy primer electrocoat application  
4. Final thick TGIC polyester powder coat

Stainless Steel: 304 grade stainless steel material finished in either a high polished shine or a satin finish.  
A rubbery PVC Dip is also available.

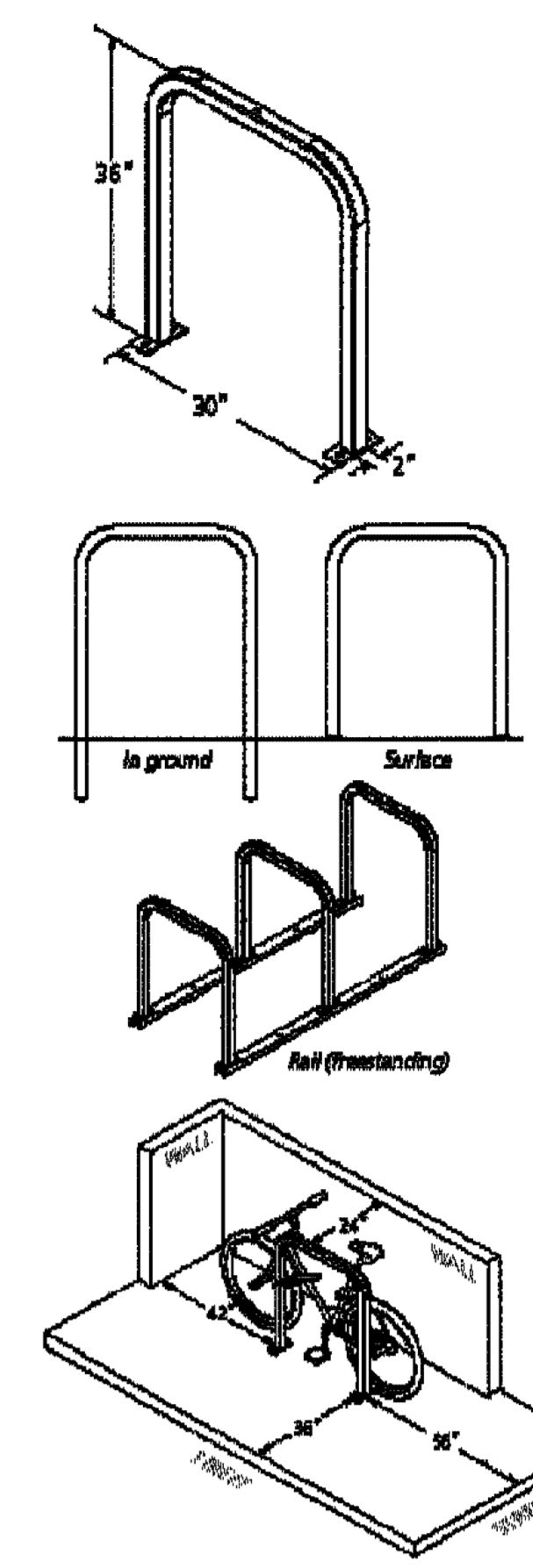
In ground installation: Embedment into concrete base. Specify ground mount for this option.  
For mounting two, 2 1/2" x 2 1/2" rack with two anchors per foot. Specify foot mount for this option.  
Rail mounted downturn racks are bolted to two parallel rails which can be left unanchored or anchored to the ground. Rail and heavy duty 2" x 1/4" x 3/16" thick galvanized mounting rails. Specify rail mount for this option.

Wall Scaffolds: For racks set parallel to a wall.  
Minimum: 24"  
Recommended: 36"

For racks set perpendicular to a wall:  
Minimum: 28"  
Recommended: 42"

Distance Between Racks:  
Minimum: 24"  
Recommended: 36"

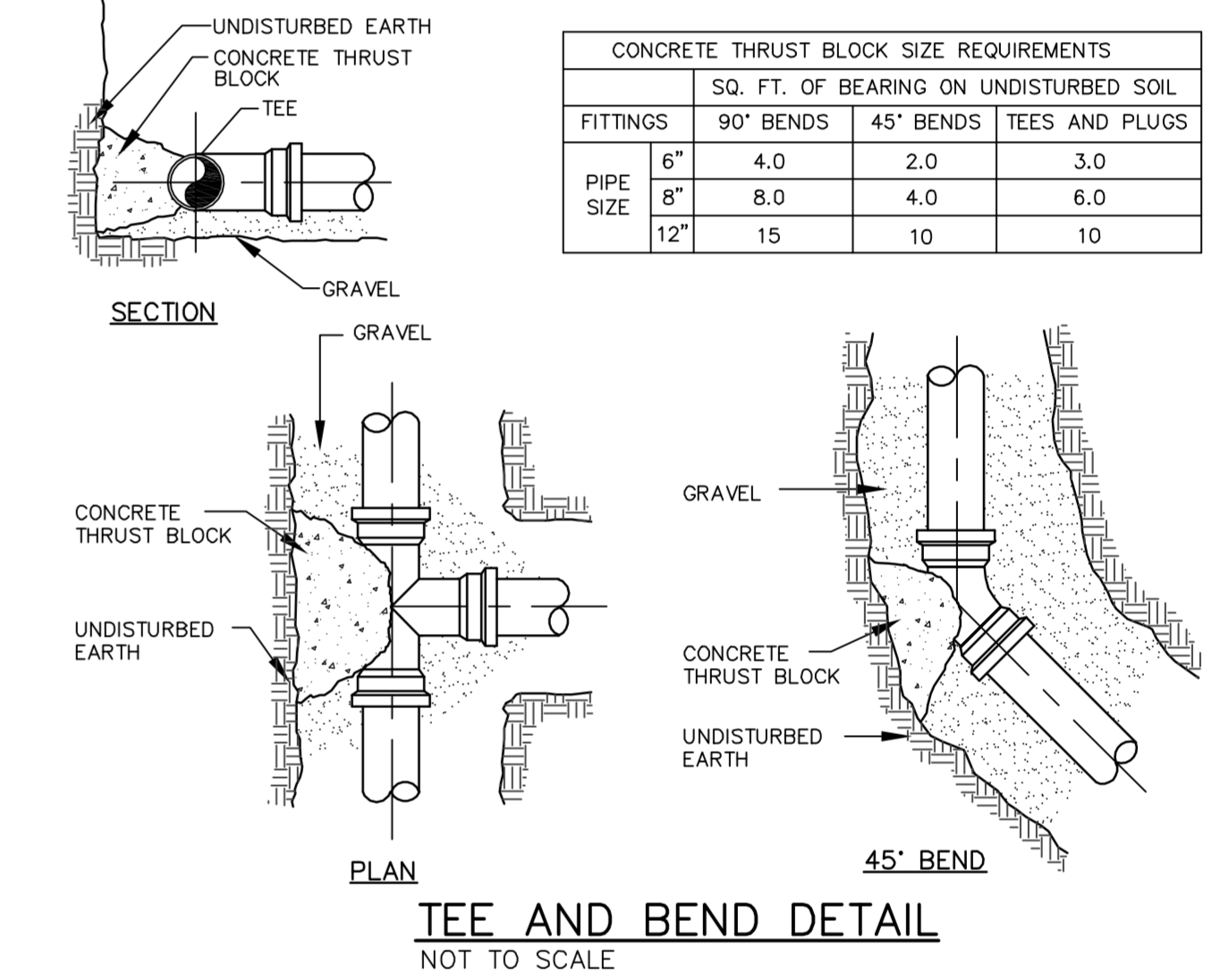
Street Scaffolds:  
Minimum: 24"  
Recommended: 36"



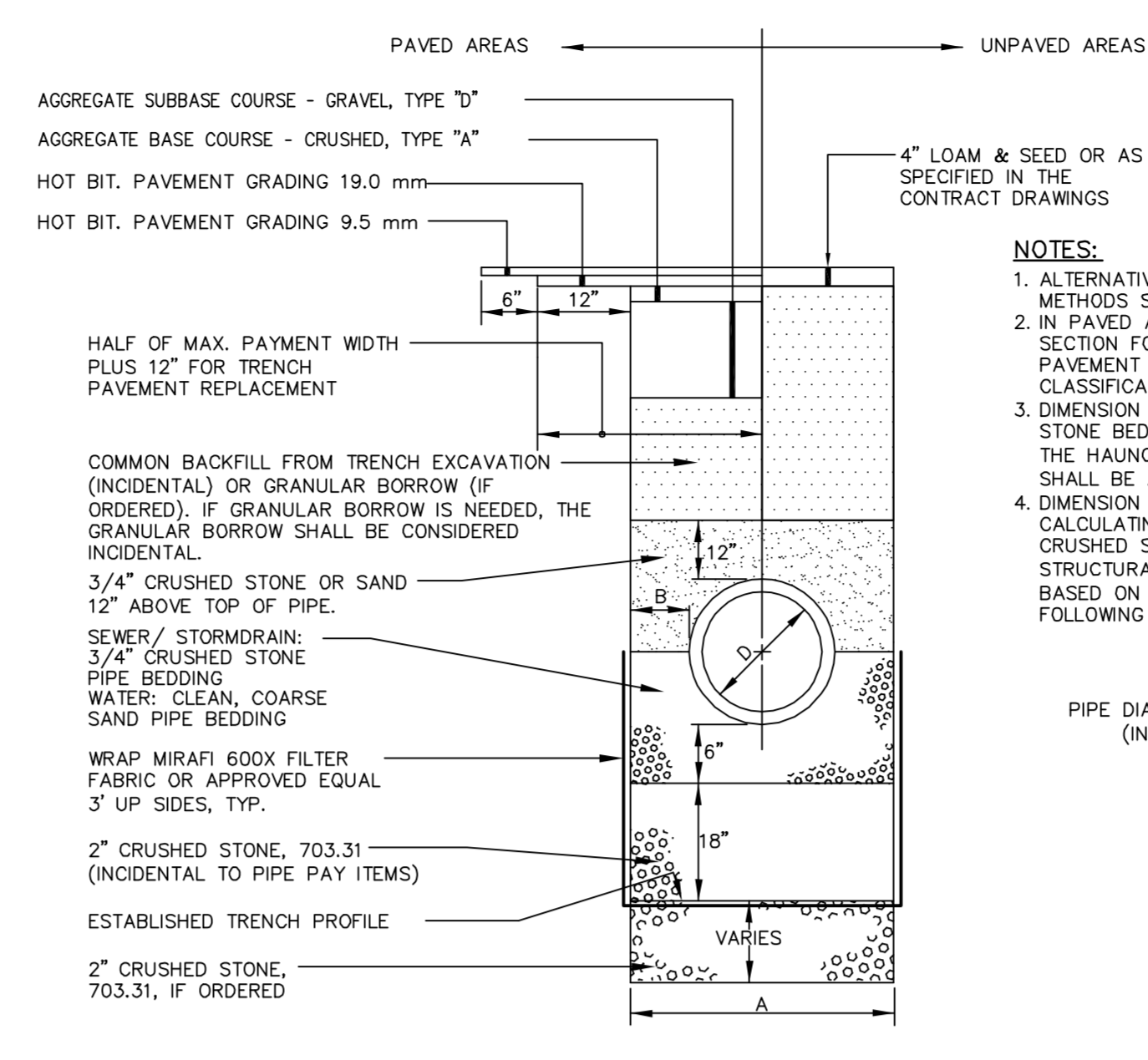
BIKE RACK DETAIL  
NOT TO SCALE

CONCRETE THRUST BLOCK SIZE REQUIREMENTS

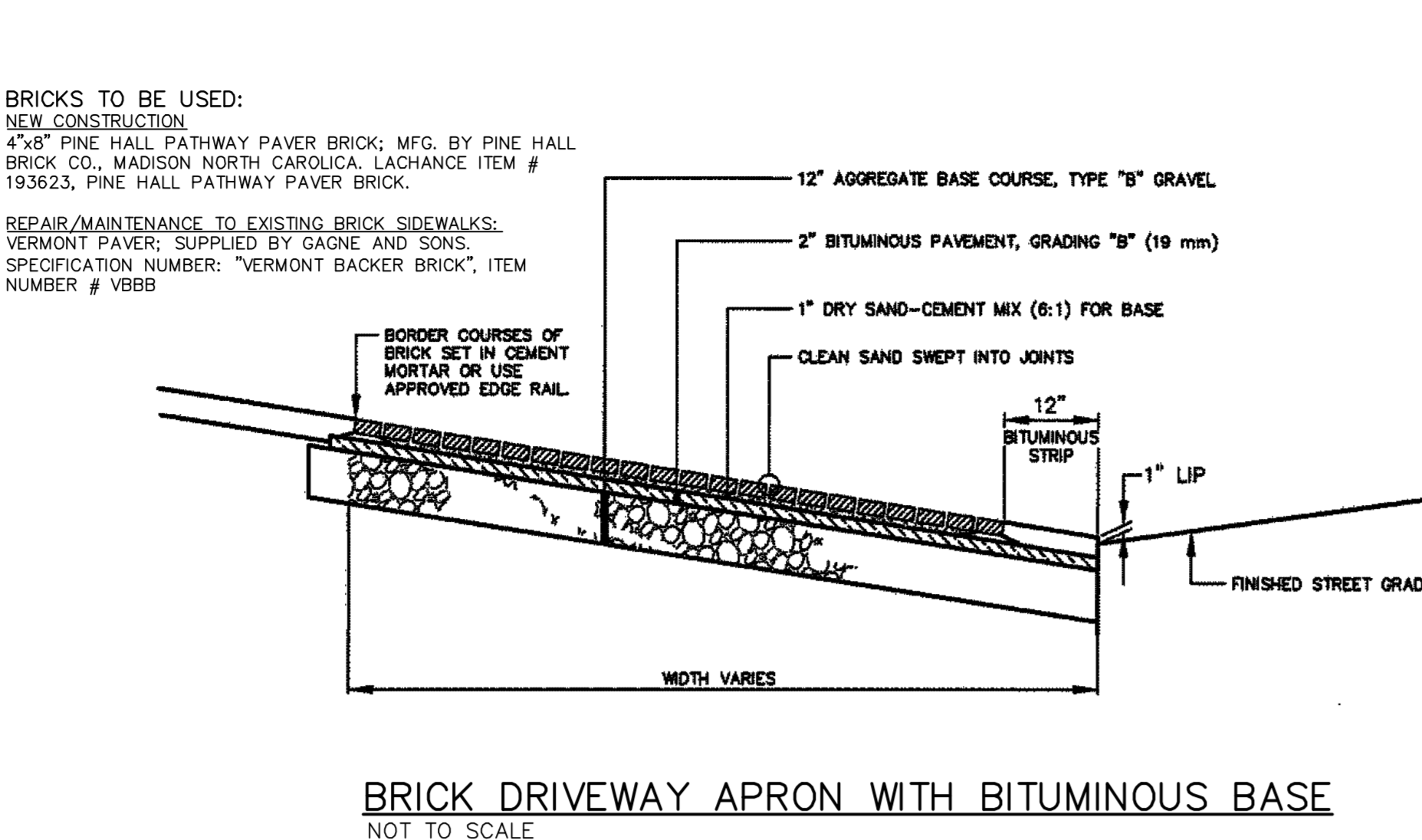
FITTINGS	90° BENDS	45° BENDS	TEES AND PLUGS
PIPE SIZE 6"	4.0	2.0	3.0
8"	8.0	4.0	6.0
12"	15	10	10



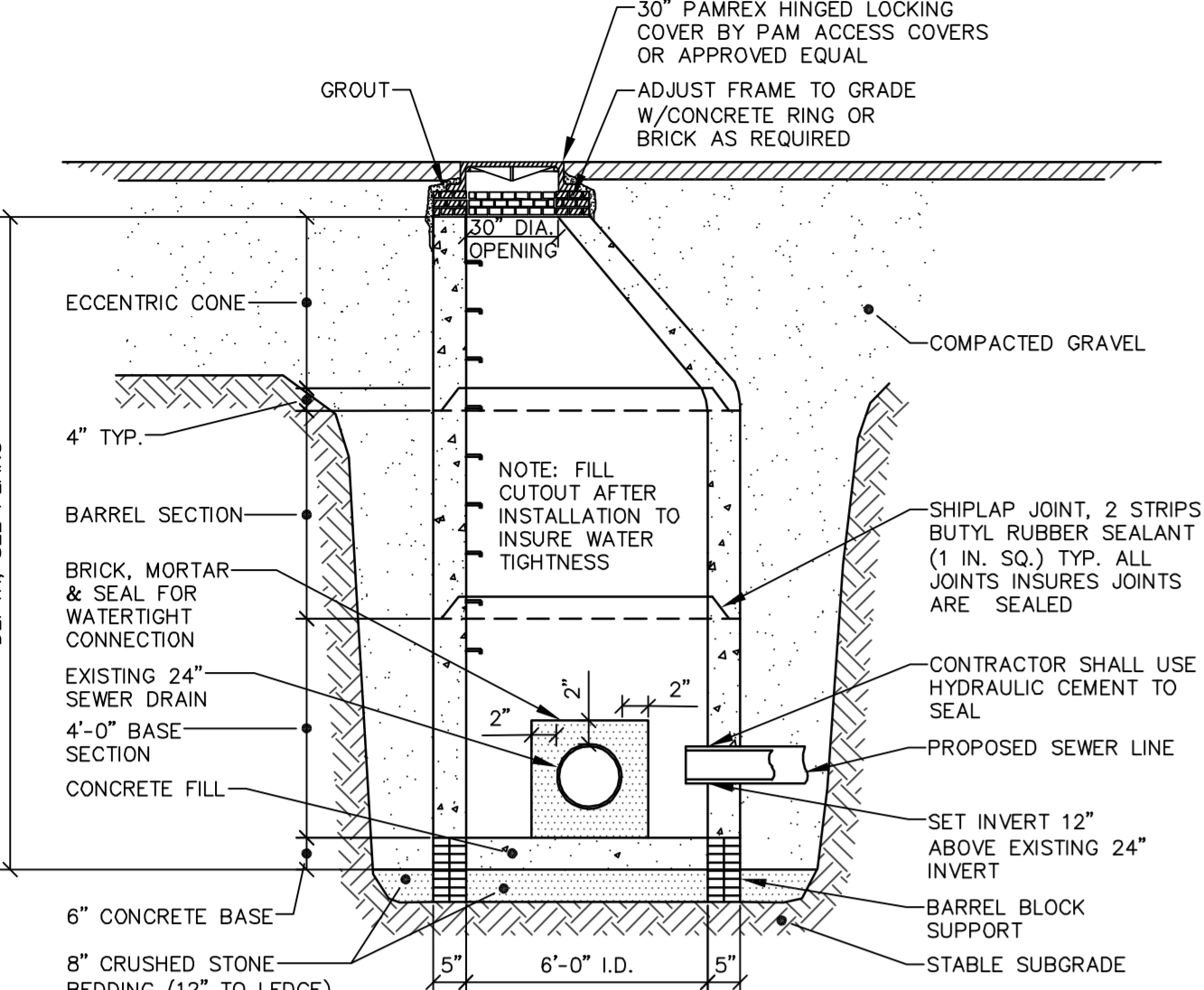
TEE AND BEND DETAIL  
NOT TO SCALE



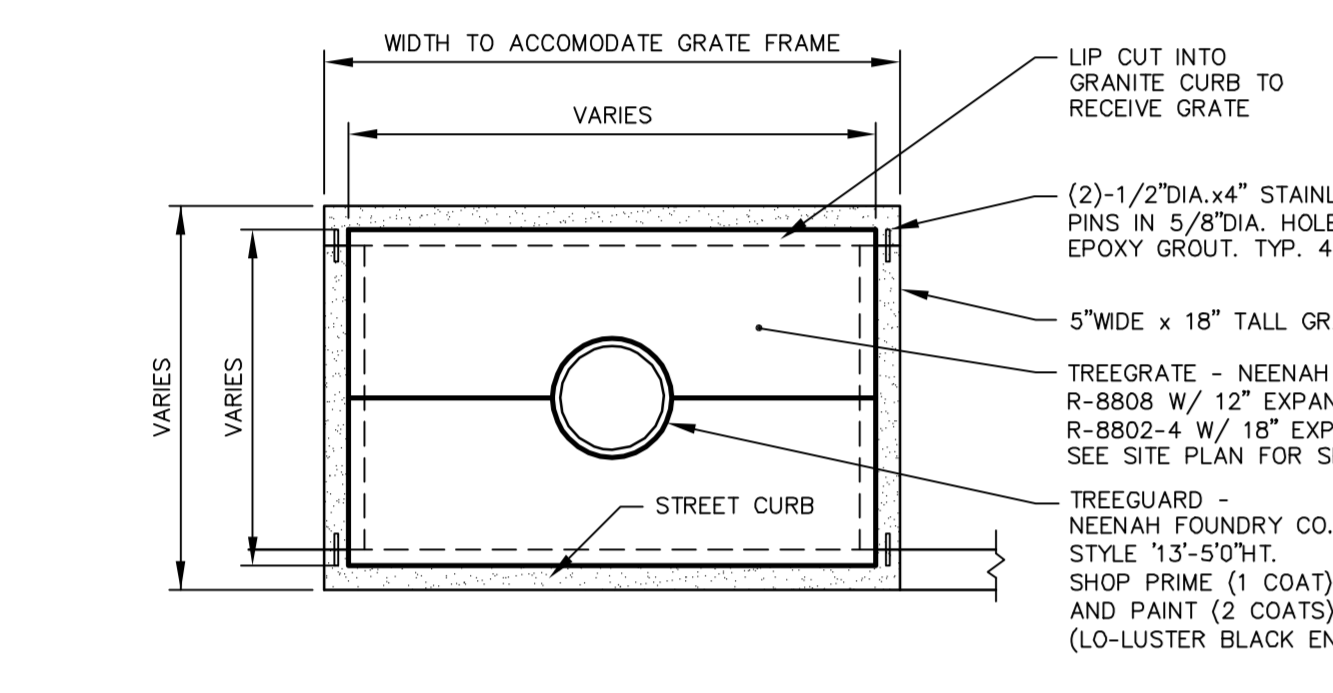
TYPICAL PIPE INSTALLATION DETAIL  
NOT TO SCALE



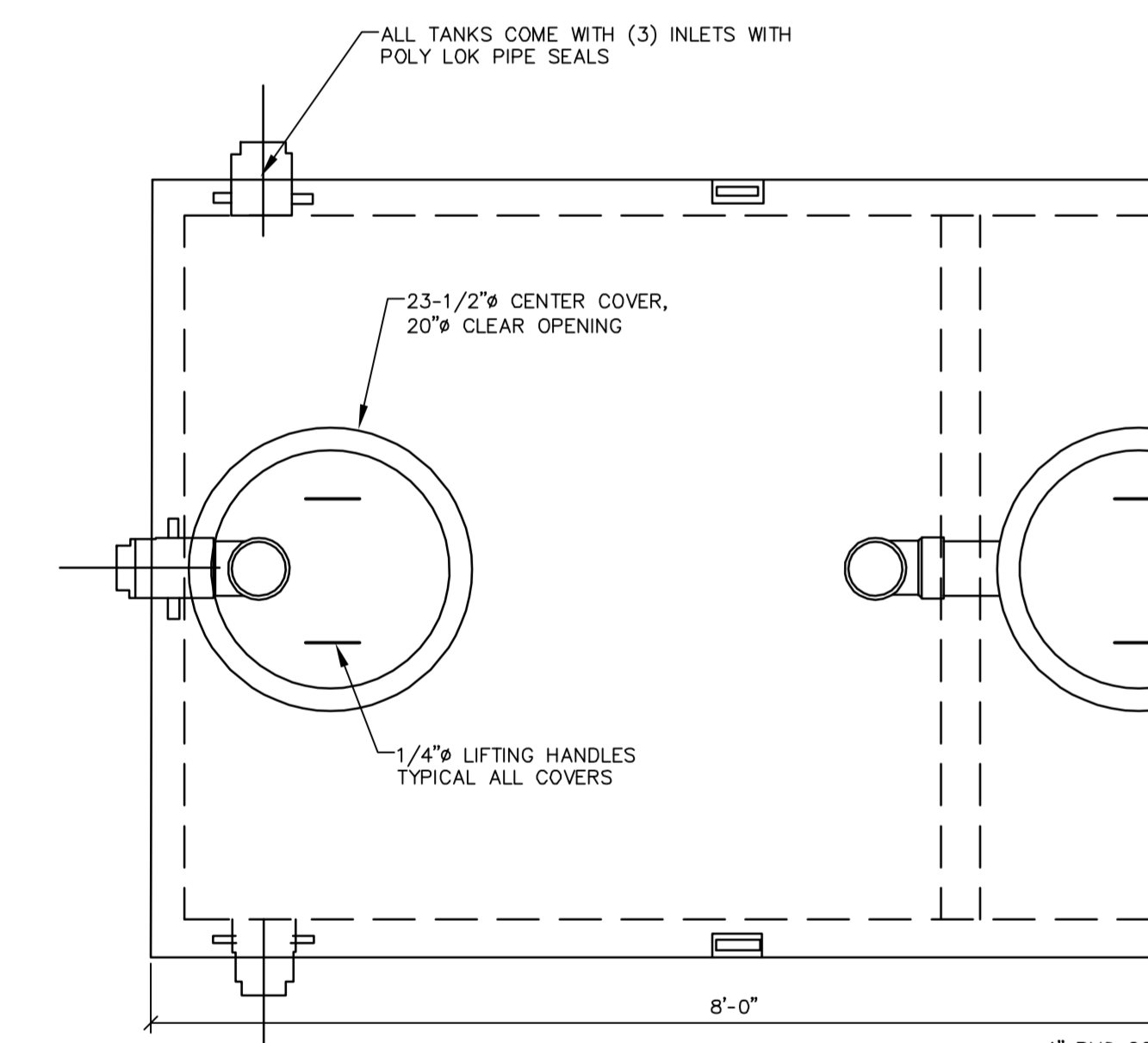
BRICK DRIVEWAY APRON WITH BITUMINOUS BASE  
NOT TO SCALE



SEWER MANHOLE DOGHOUSE STRUCTURE  
NOT TO SCALE

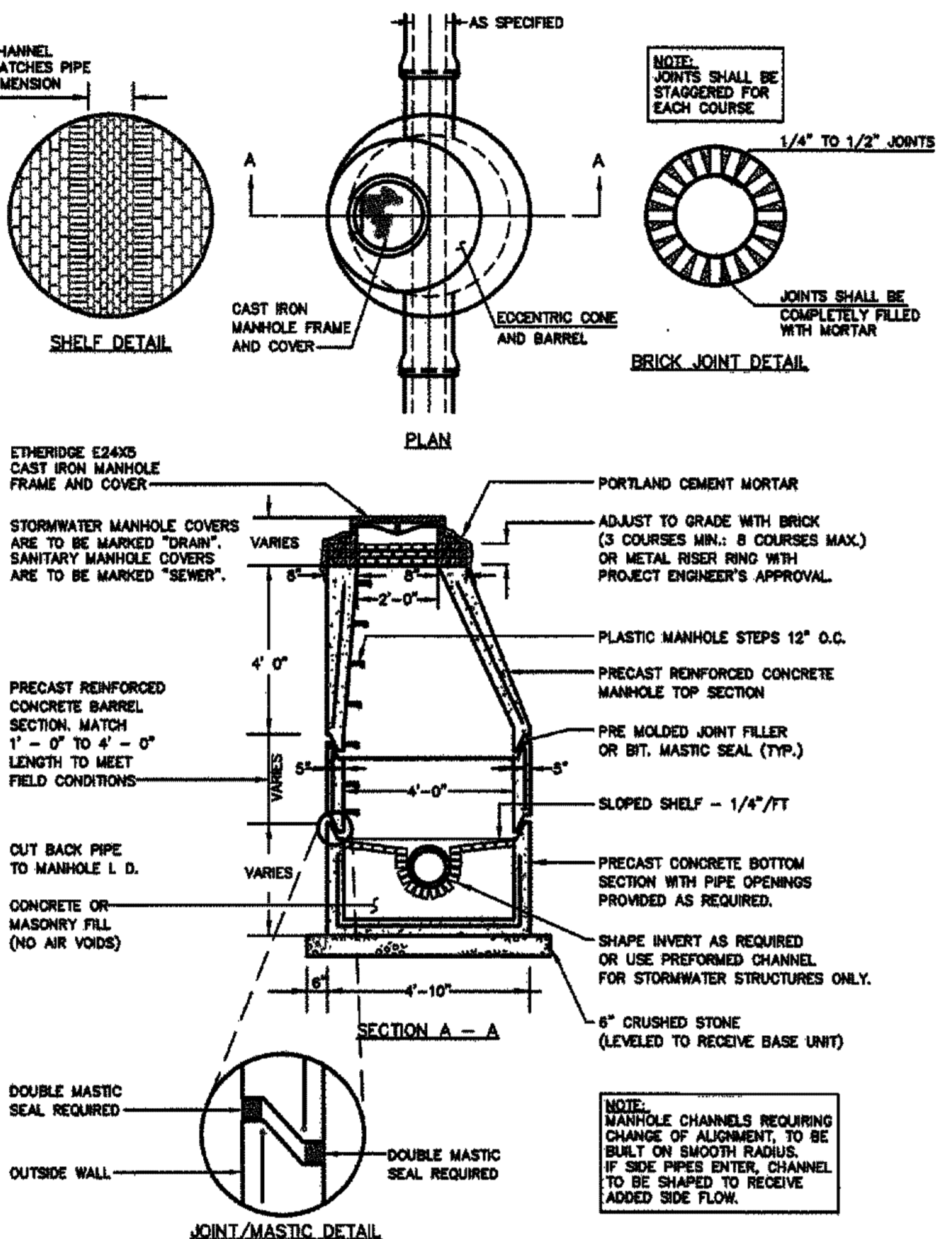


TREE GRATE DETAIL  
NOT TO SCALE

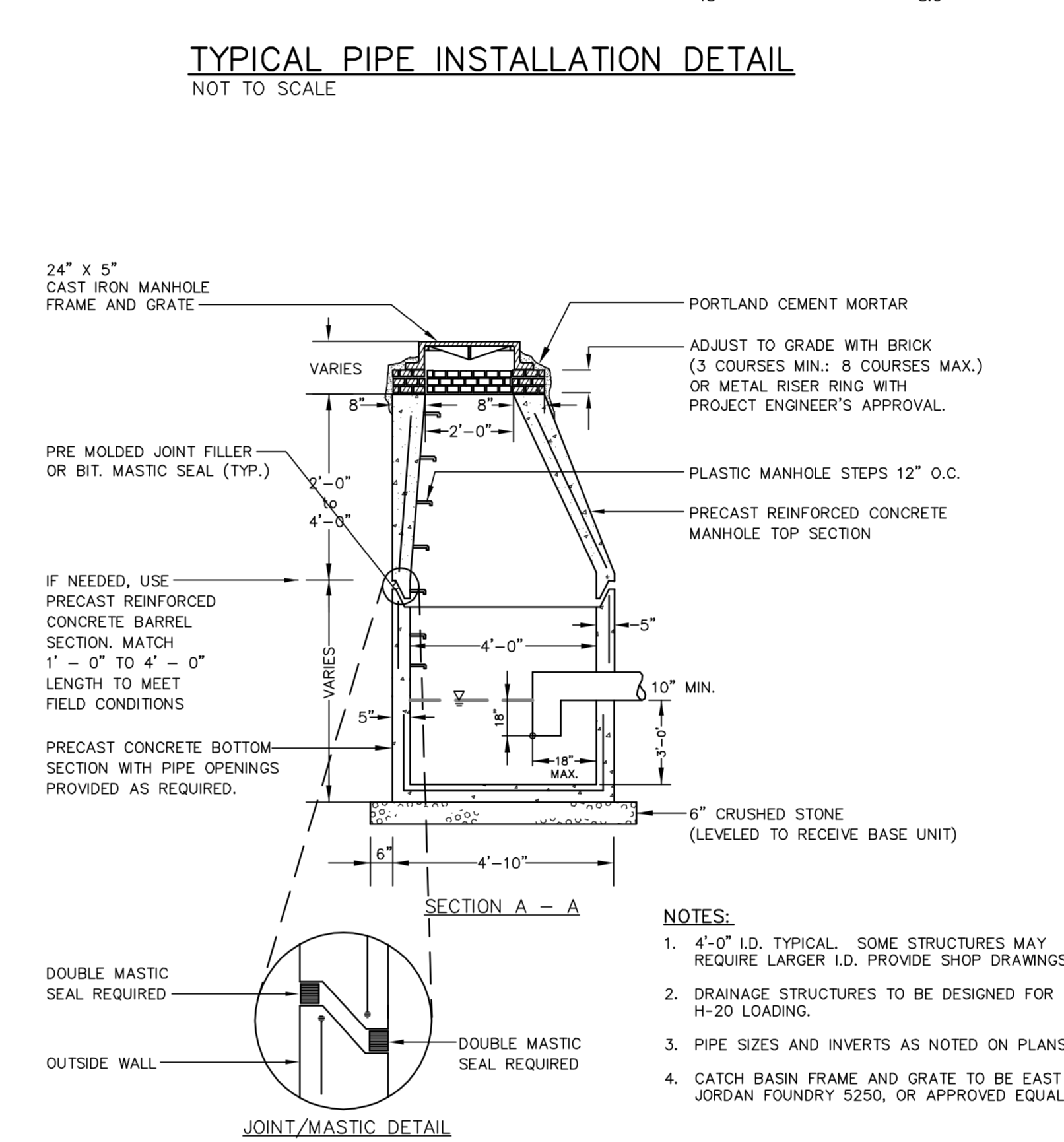


1000 GALLON GREASE TRAP  
NOT TO SCALE

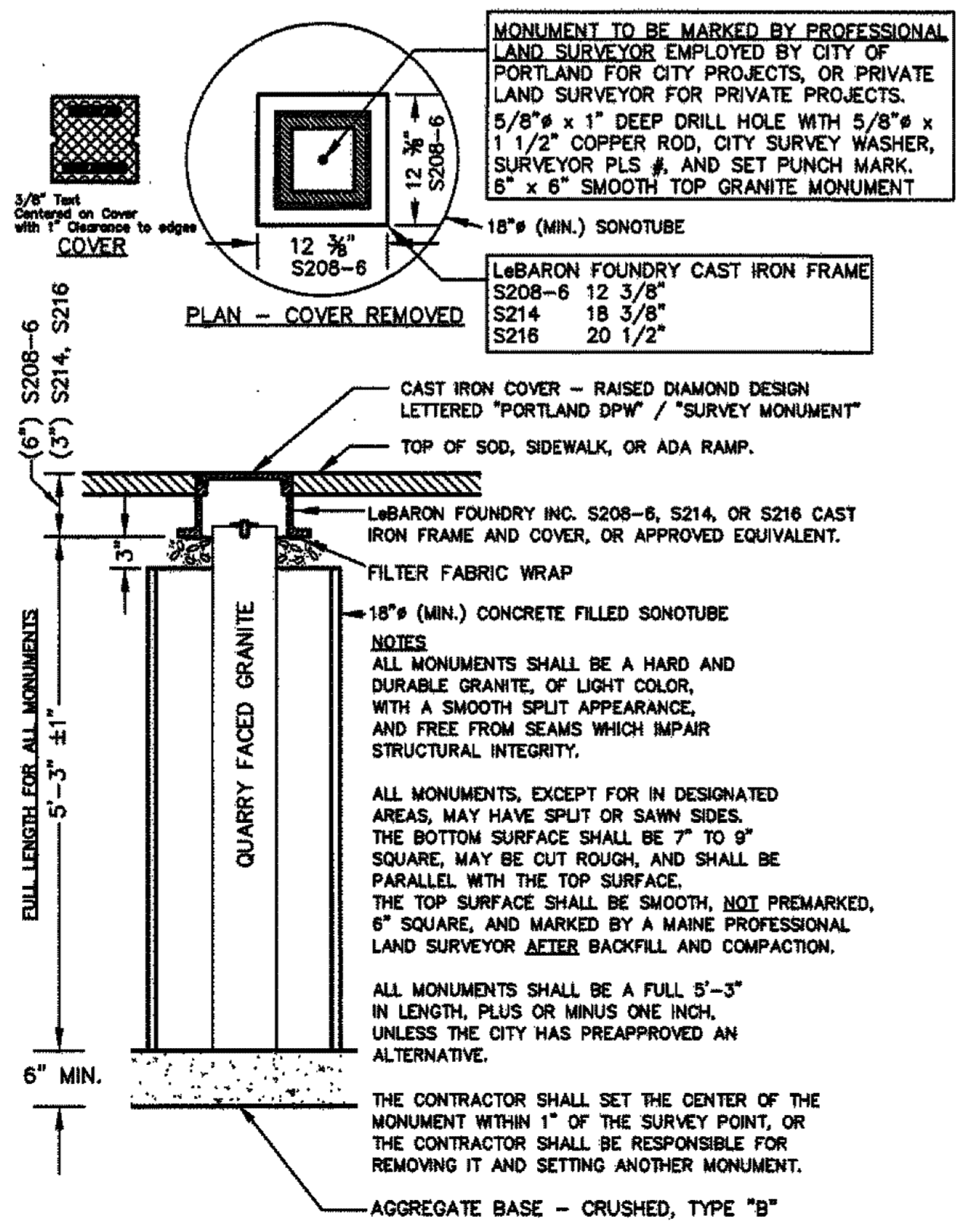
- CONCRETE SPECIFICATIONS:
- 4000 PSI @ 28 DAYS
  - 4% OR ENTRAINED AIR
  - TANK PENETRATIONS ARE INTEGRALLY CAST
  - ALL JOINTS SEALED WITH BUTYL RUBBER JOINT SEALANT
- GREASE TRAP INFORMATION:
- TANKS SHOULD BE PUMPED AS NEEDED
  - ACCESS COVERS SHOULD HAVE RISERS TO BEING COVER ACCESS TO GRADE.
  - TANKS CAN BE VACUUM TESTED AT AN ADDITIONAL COST.



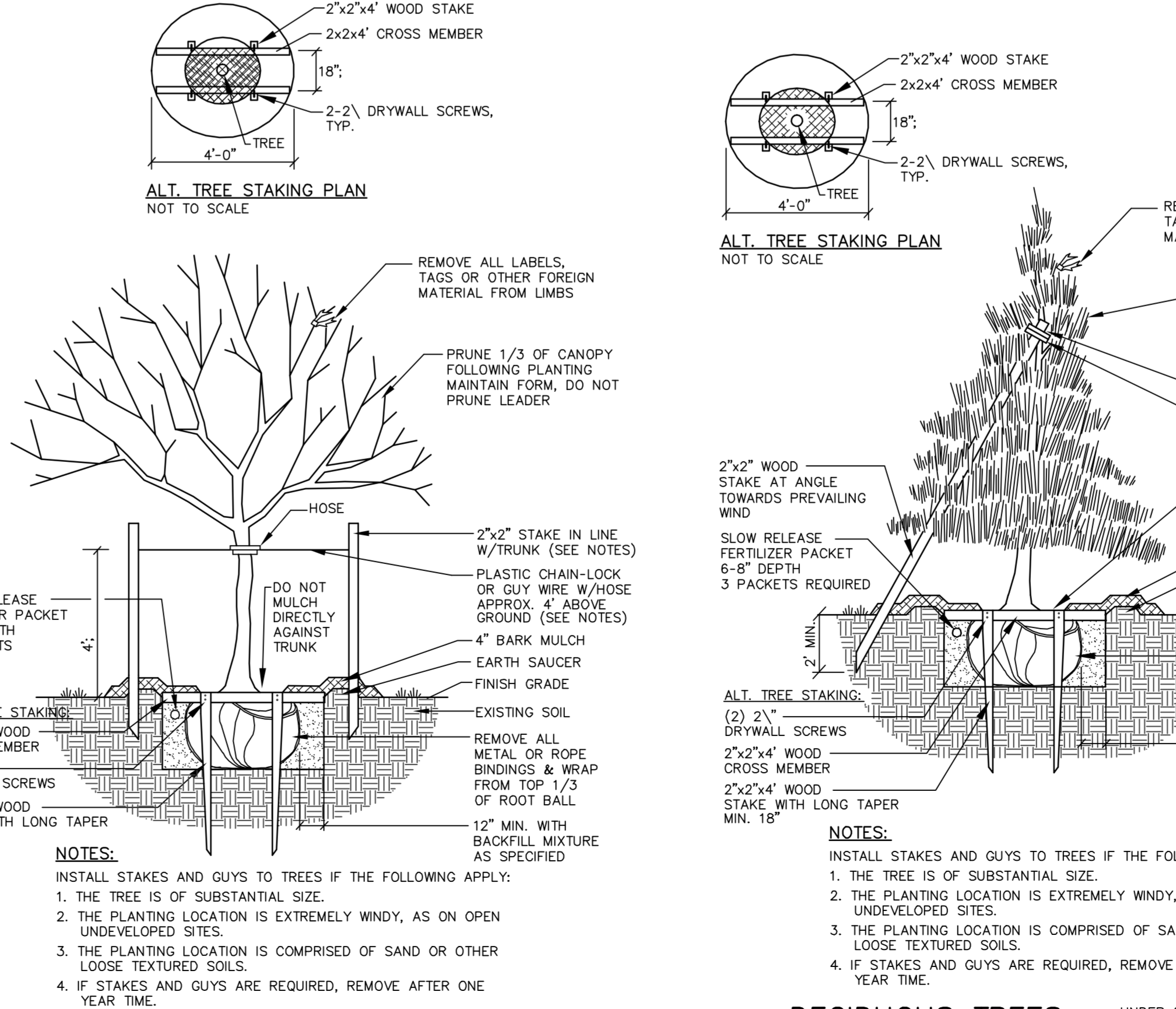
PRECAST CONCRETE MANHOLE  
NOT TO SCALE



OIL / GRIT SEPARATOR  
NOT TO SCALE

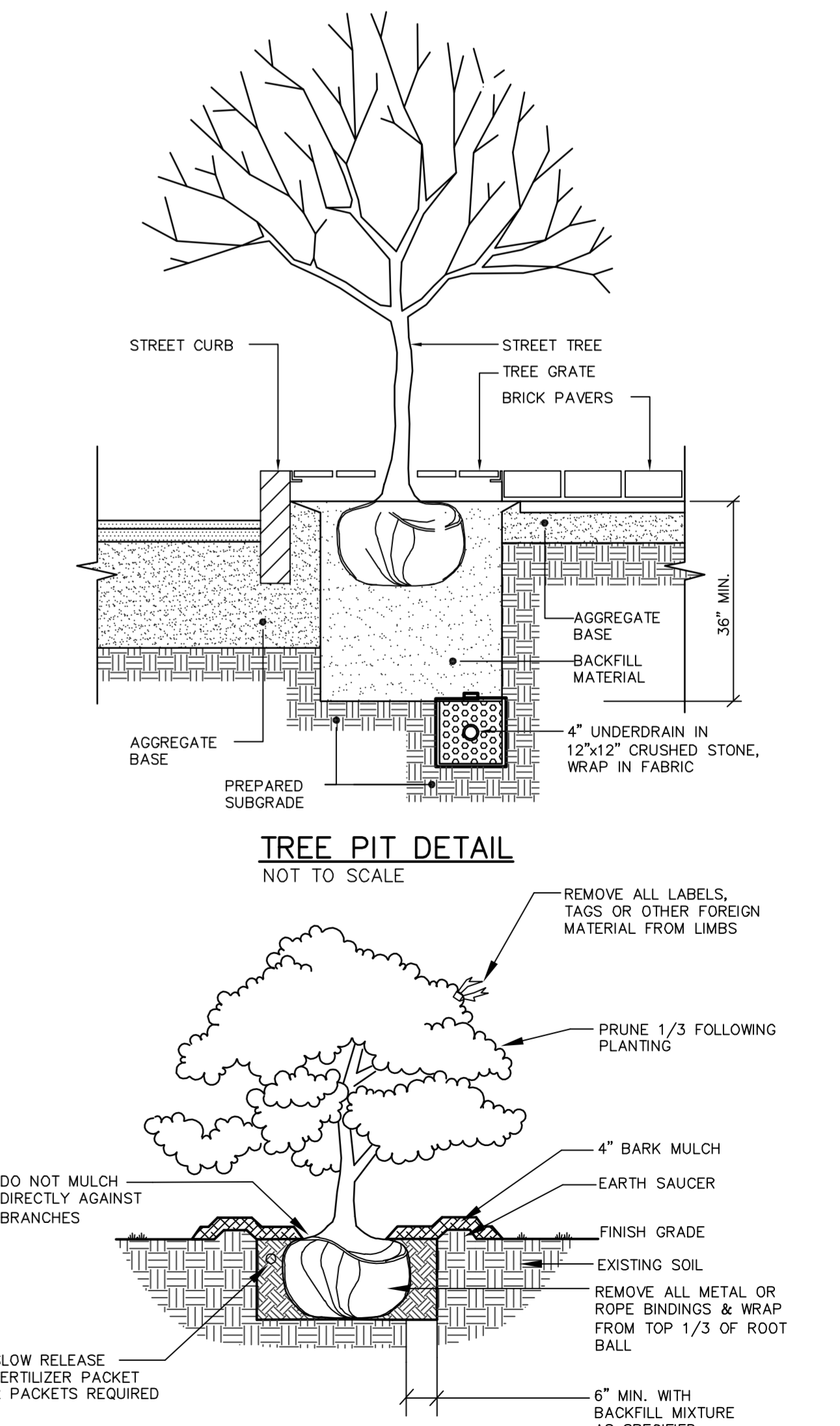


GRANITE STREET MONUMENT  
NOT TO SCALE

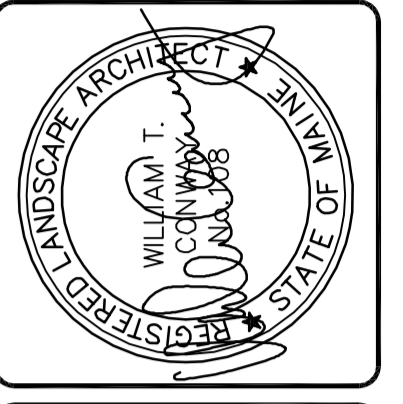
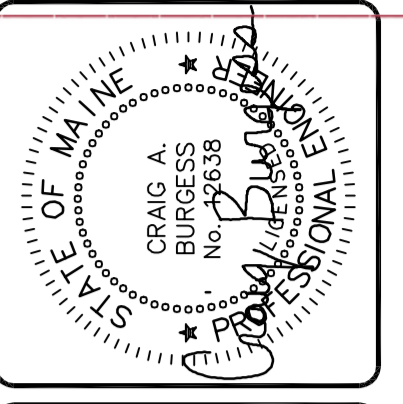


DECIDUOUS TREES  
NOT TO SCALE

DECIDUOUS TREES  
NOT TO SCALE



TREE PIT DETAIL  
NOT TO SCALE



DESIGNED	CHECKED
WTC	CAB

REV.	DATE	DESCRIPTION
D	9-28-16	SUBMIT FOR BUILDING PERMIT
C	5-13-16	CITY SUBMITTAL NO. 3
B	4-11-16	CITY SUBMITTAL NO. 2
A	3-4-16	SUBMITTED FOR SITE PLAN REVIEW AND APPROVAL

REVIEWED BY: DATE: STATUS:

THIS PLAN SHALL NOT BE MODIFIED WITHOUT WRITTEN PERMISSION FROM SEBAGO TECHNIQUES, INC. ANY ALTERATIONS, ADDITIONS OR DELETIONS SHALL BE AT THE USER'S SOLE RISK AND WITHOUT LIABILITY TO SEBAGO TECHNIQUES, INC.

SEBAGO  
TECHNIQUES  
INC.

WWW.SEBAGOTECHNIQUES.COM

75 John J. St. 1st Fl.  
South Portland, ME 04106  
Tel: 207-200-2100

INDIA NEWBURY RESIDENCES, LLC

50-62 INDIA STREET  
PORTLAND, MAINE

ST. LEONARD  
355 STATE ST.  
ROXBURY, MA 02119