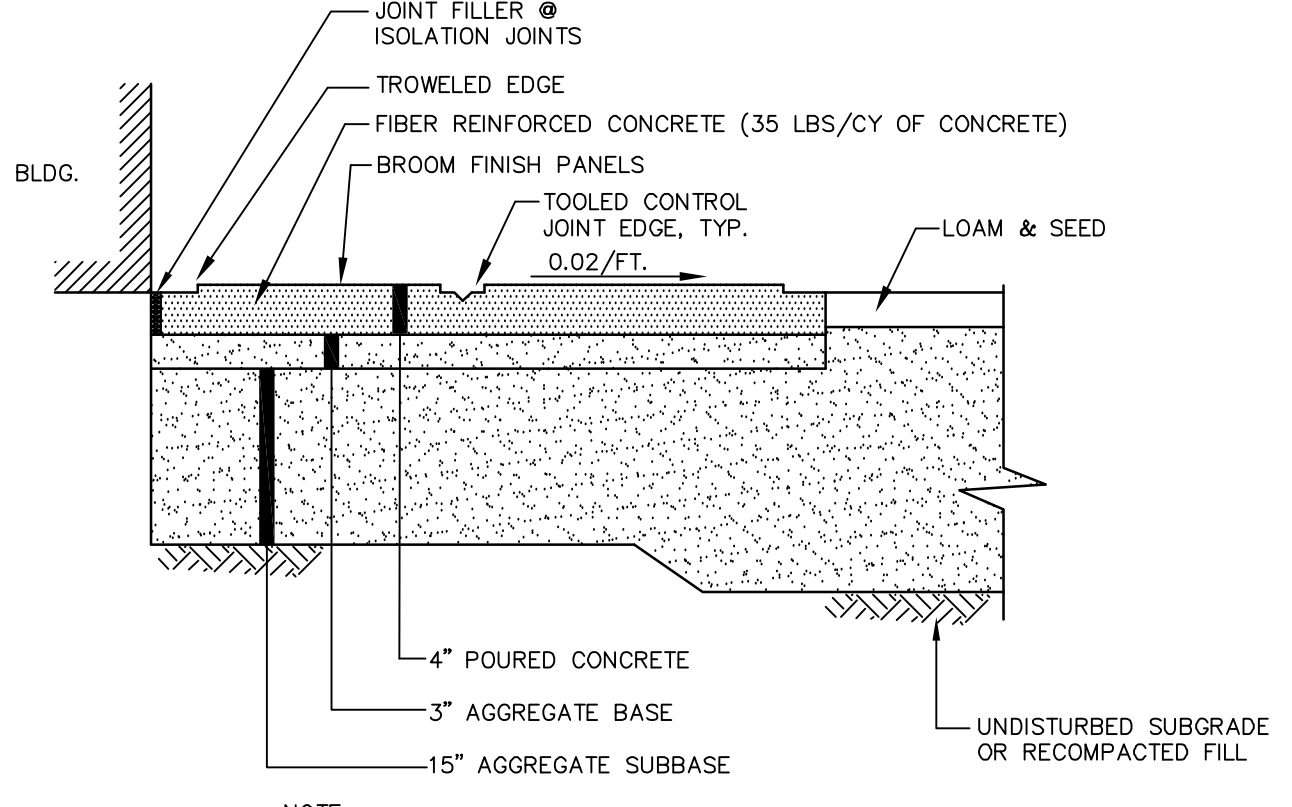


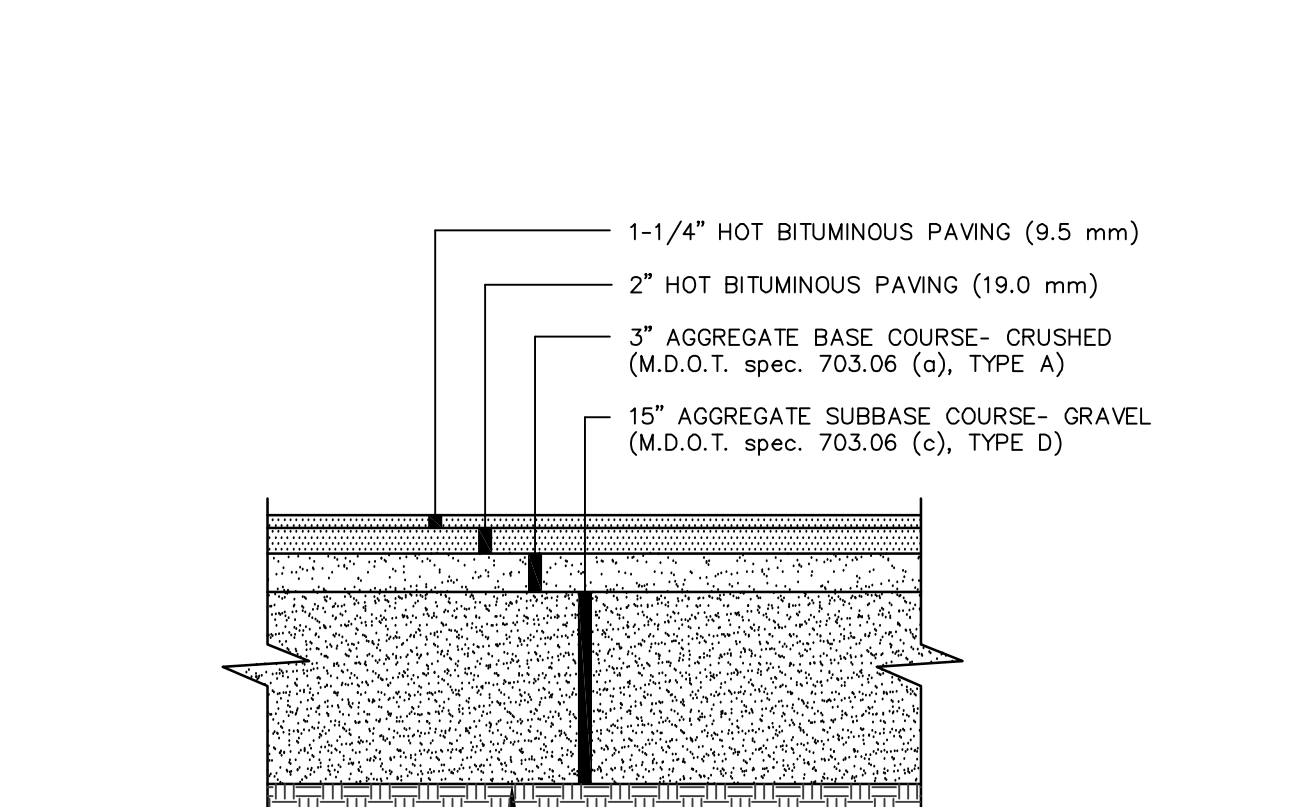
CONCRETE PAVING WITH CURB
NOT TO SCALE

NOTE:
1. INSTALL 4.5\"/>



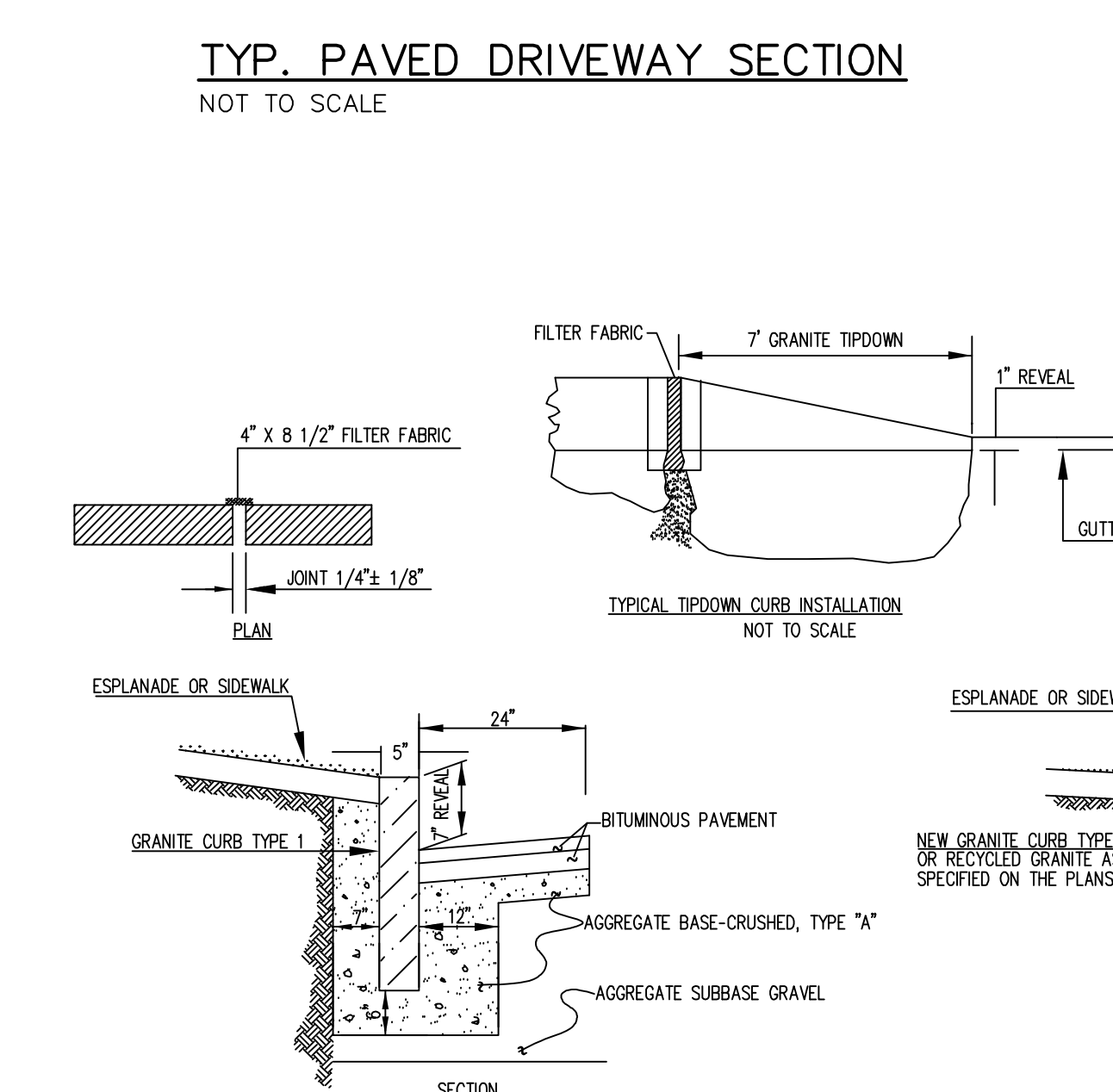
TYPICAL CONCRETE SLAB SECTION
NOT TO SCALE

NOTE:
1. PROVIDE CONTRACTION CONTROL JOINTS EVERY 5'-0\"/>



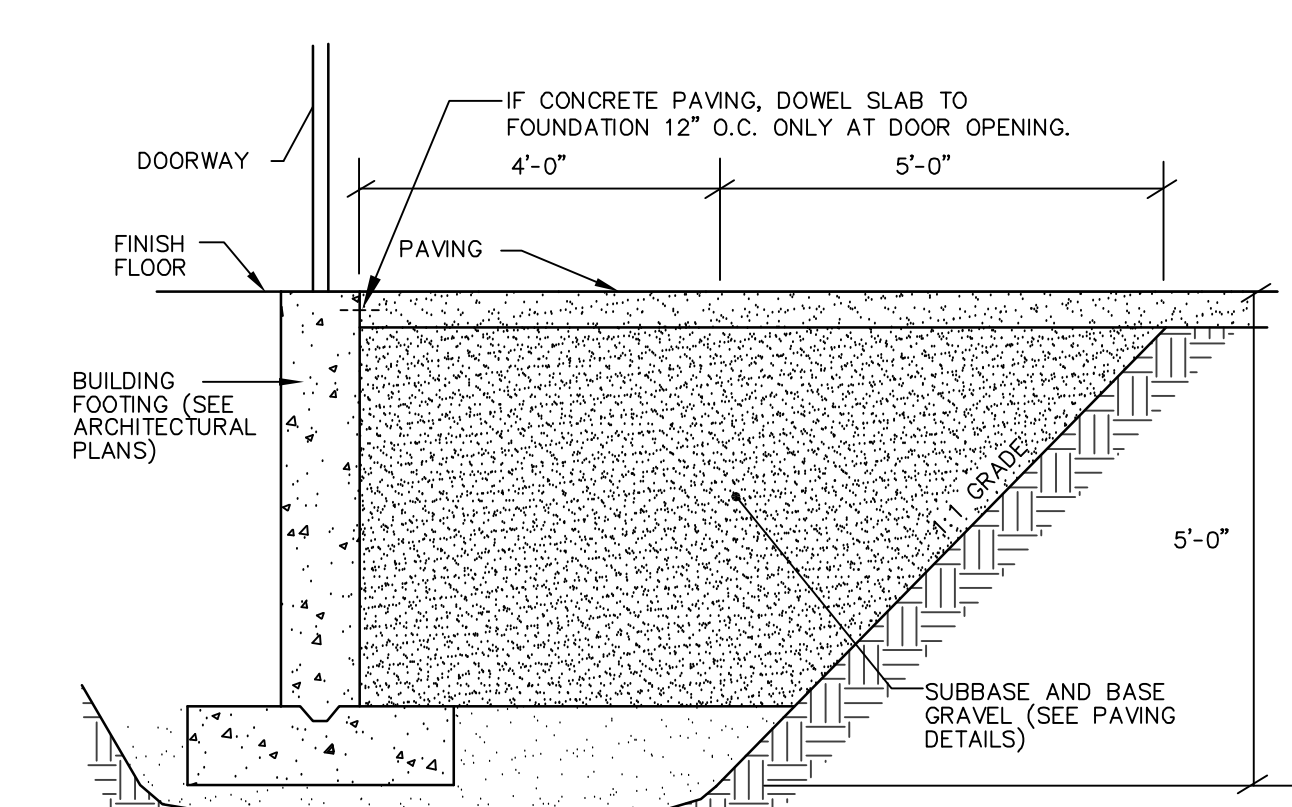
TYP. PAVED DRIVEWAY SECTION
NOT TO SCALE

NOTE:
1. COMPACT GRAVEL SUBBASE AND BASE COURSES TO 95% OF MAXIMUM DENSITY USING HEAVY ROLLER COMPACTION.
2. HOT MIX ASPHALT SURFACE COURSE SHALL BE COMPACTED TO 95% OF ITS THEORETICAL MAXIMUM DENSITY (ASTM D-2041). BASE COURSE SHALL BE COMPACTED TO 95% ± 2.5% OF ITS THEORETICAL MAXIMUM DENSITY (ASTM D-2041).
3. APPLY TACK COAT BETWEEN SUCCESSIVE LIFTS OF BITUMINOUS PAVEMENT.
4. CONTRACTOR SHALL SET GRADE STAKES MARKING SUBBASE AND FINISH GRADE ELEVATIONS FOR CONSTRUCTION REFERENCE.

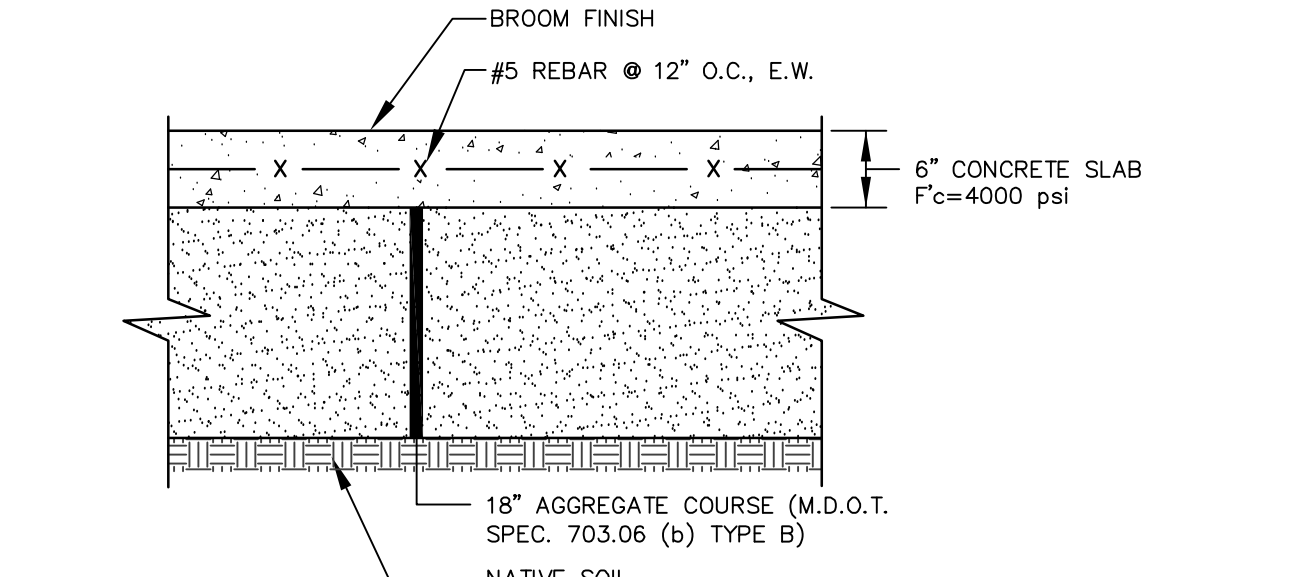


INSTALLATION OF CURB, TYPE 1
NOT TO SCALE

NOTE: NO GRANITE CURB SECTIONS SHALL BE INSTALLED LESS THAN 4 FT. IN LENGTH.

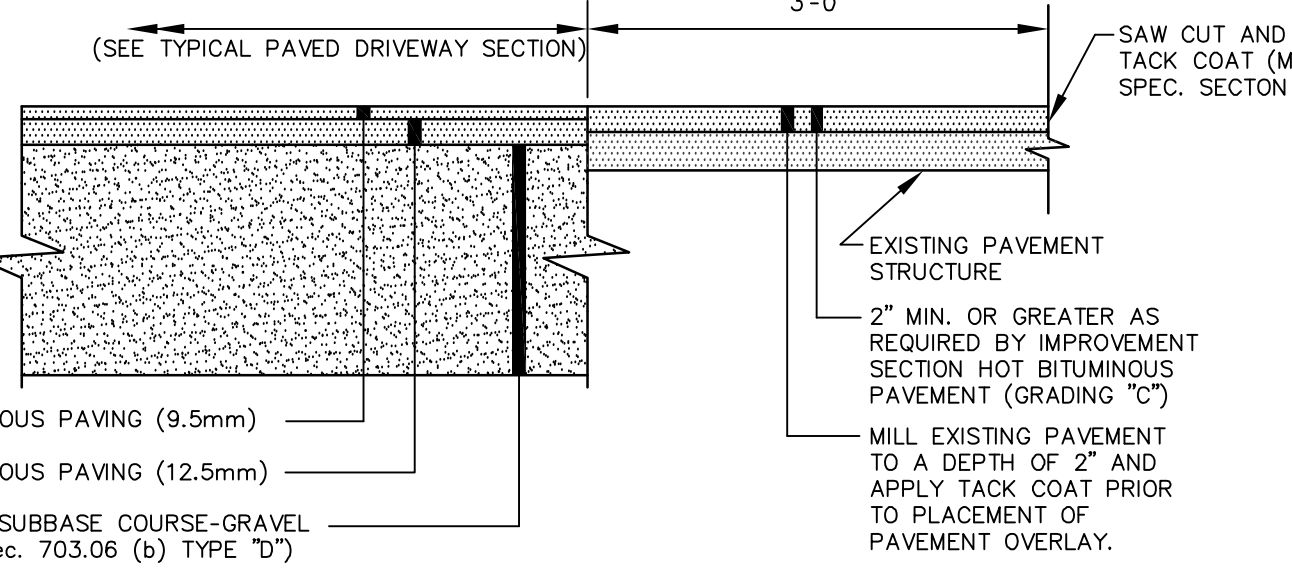


5' GRANULAR BASE @ DOOR THRESHOLD
NOT TO SCALE

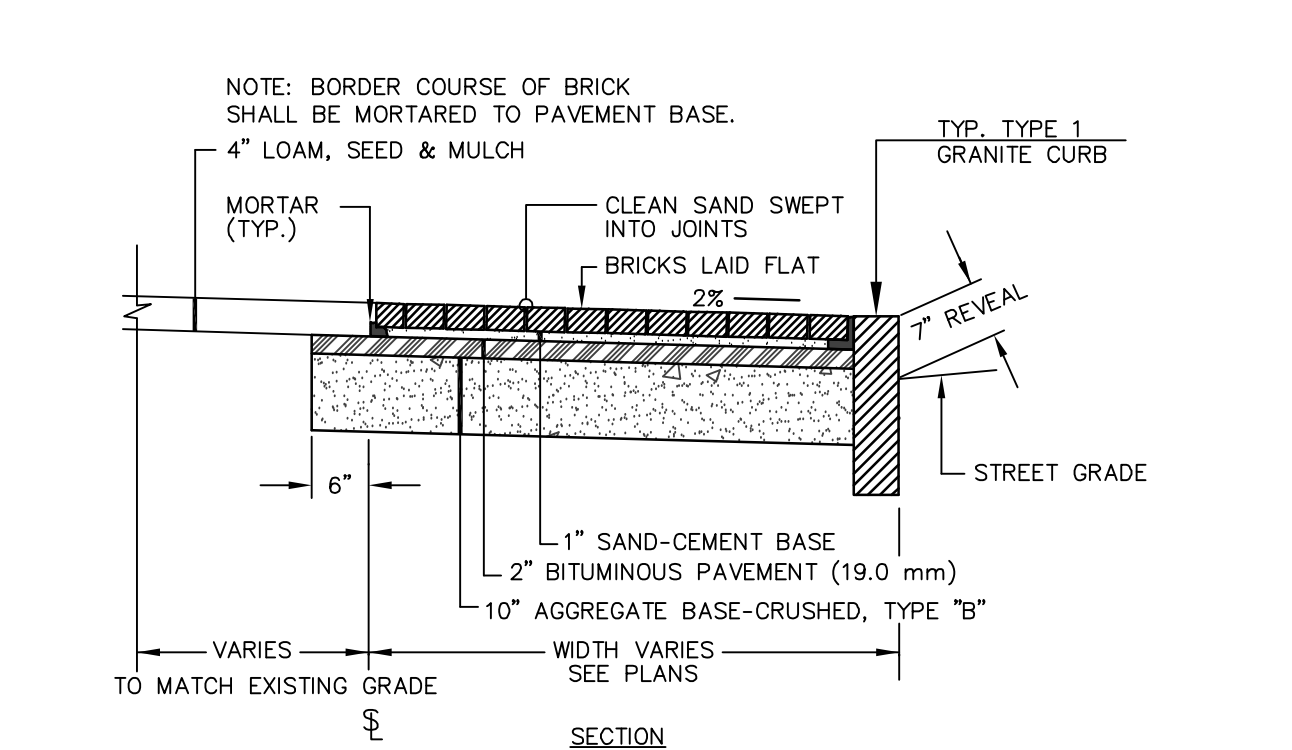


BRICK SIDEWALK DETAIL
NOT TO SCALE

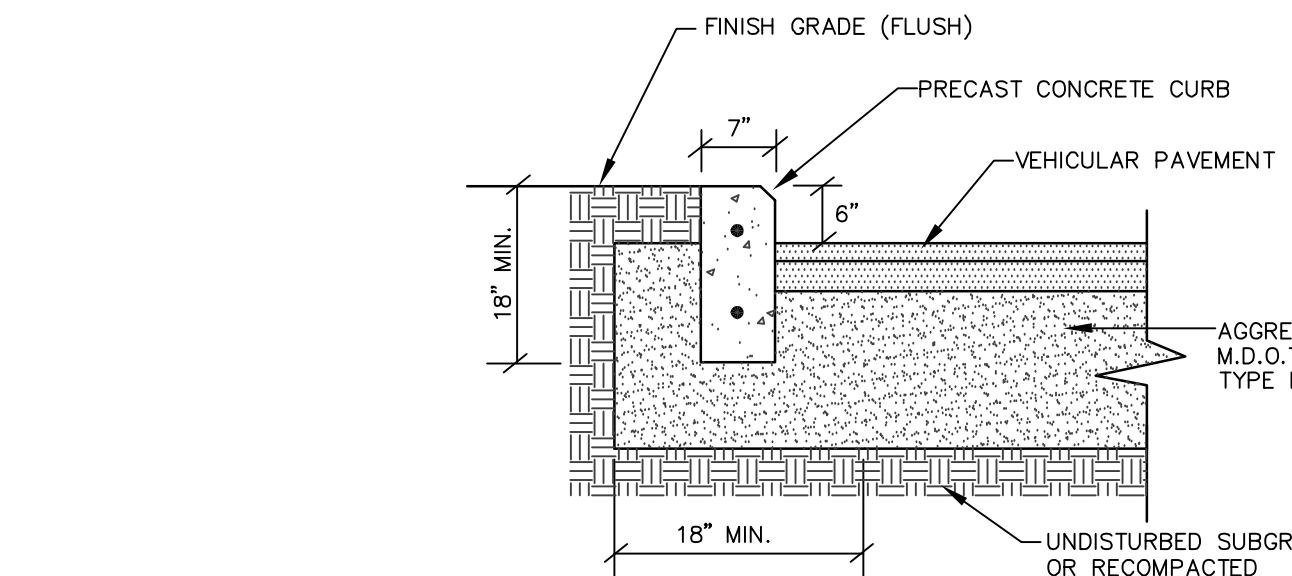
NOTE: BORDER COURSE OF BRICK SHALL BE MORTARED TO PAVEMENT BASE. 4\"/>



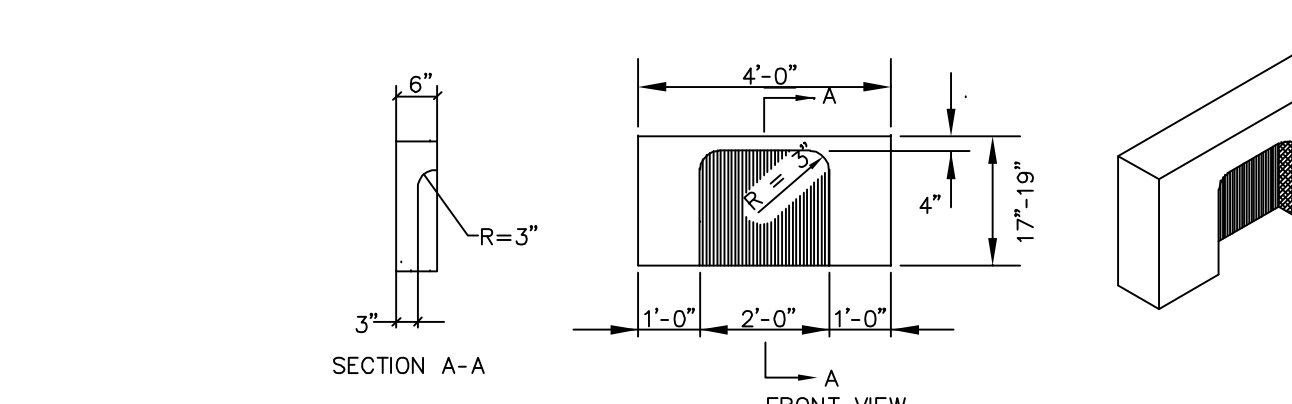
PAVEMENT SAW CUT DETAIL
NOT TO SCALE



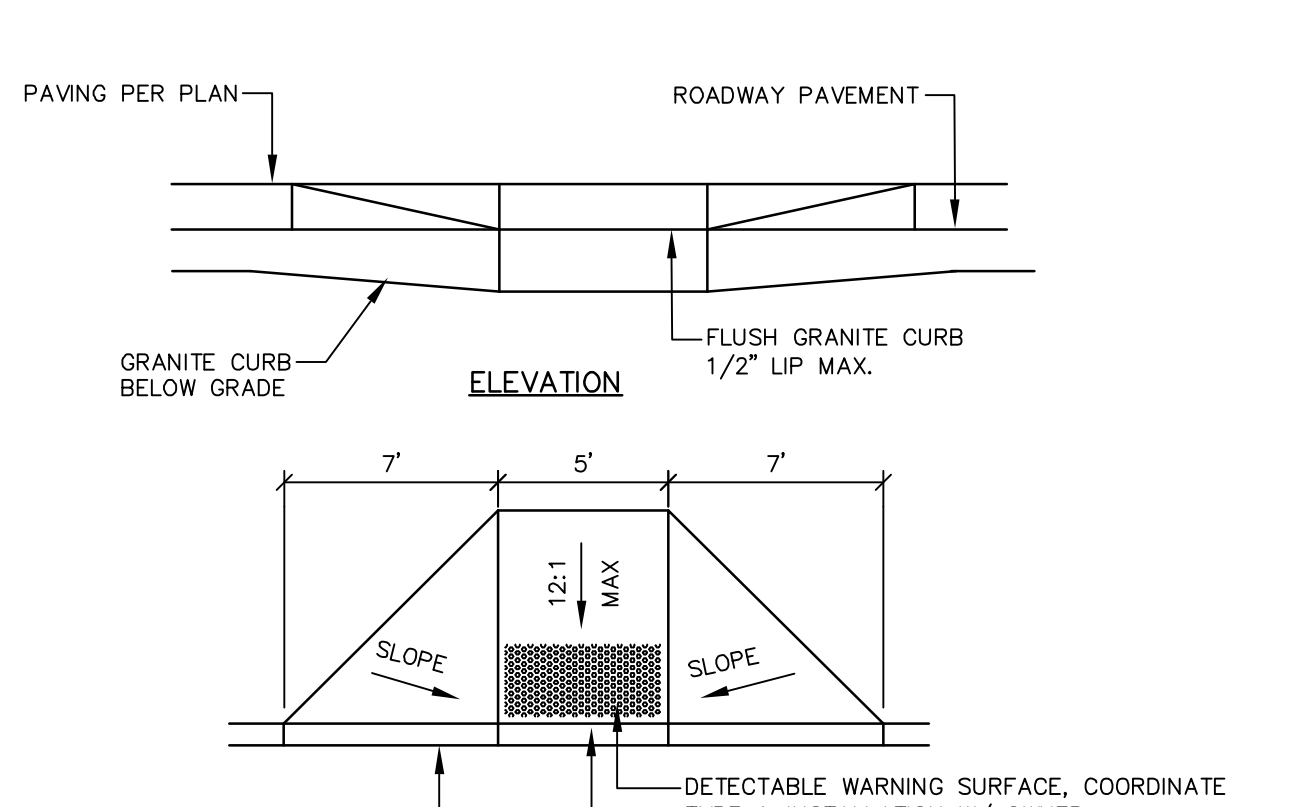
STEEL BOLLARD
NOT TO SCALE



PRECAST CONCRETE CURB
NOT TO SCALE

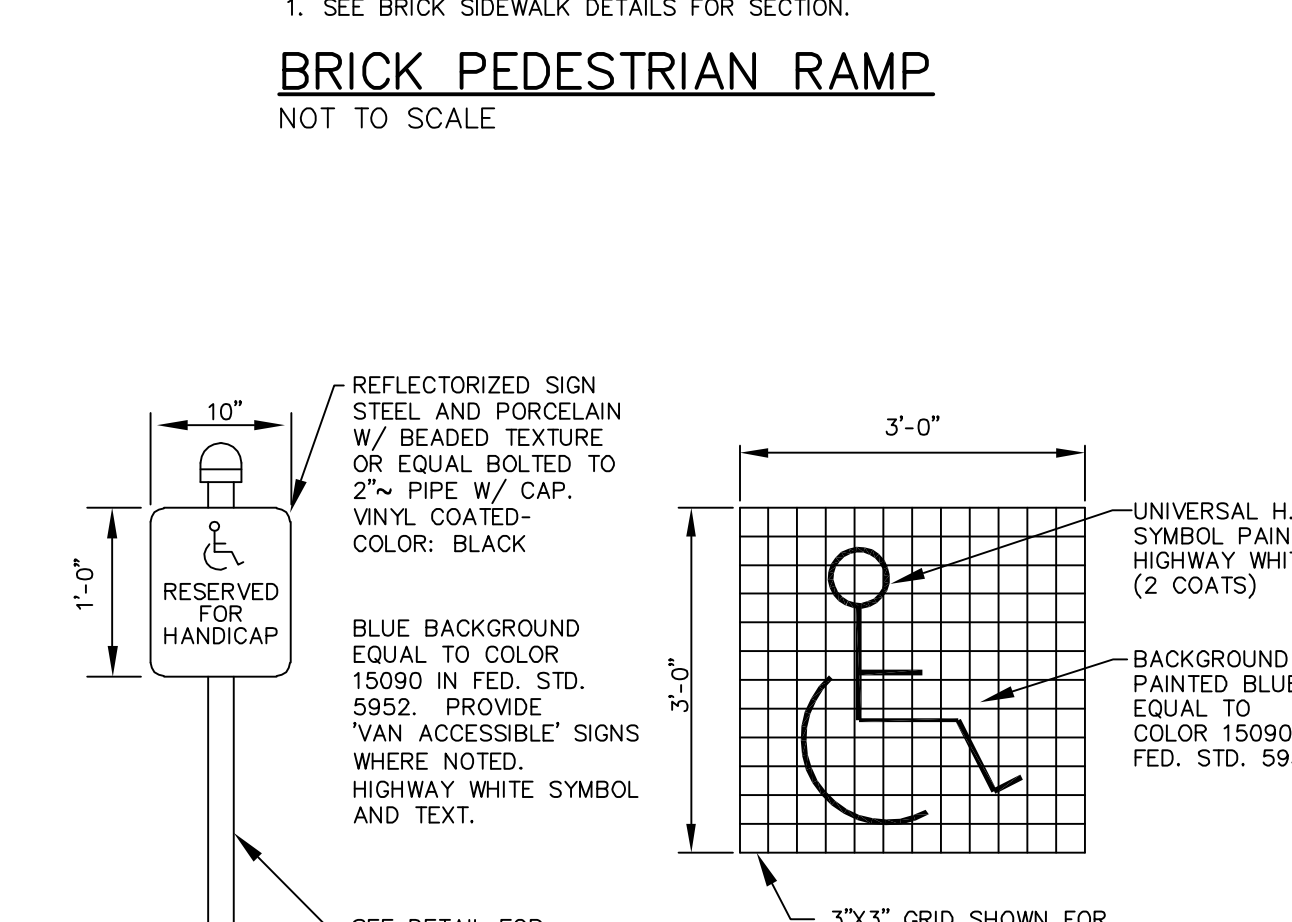


TYPE A-4 GRANITE CATCH BASIN INLET STONE DETAIL
NOT TO SCALE

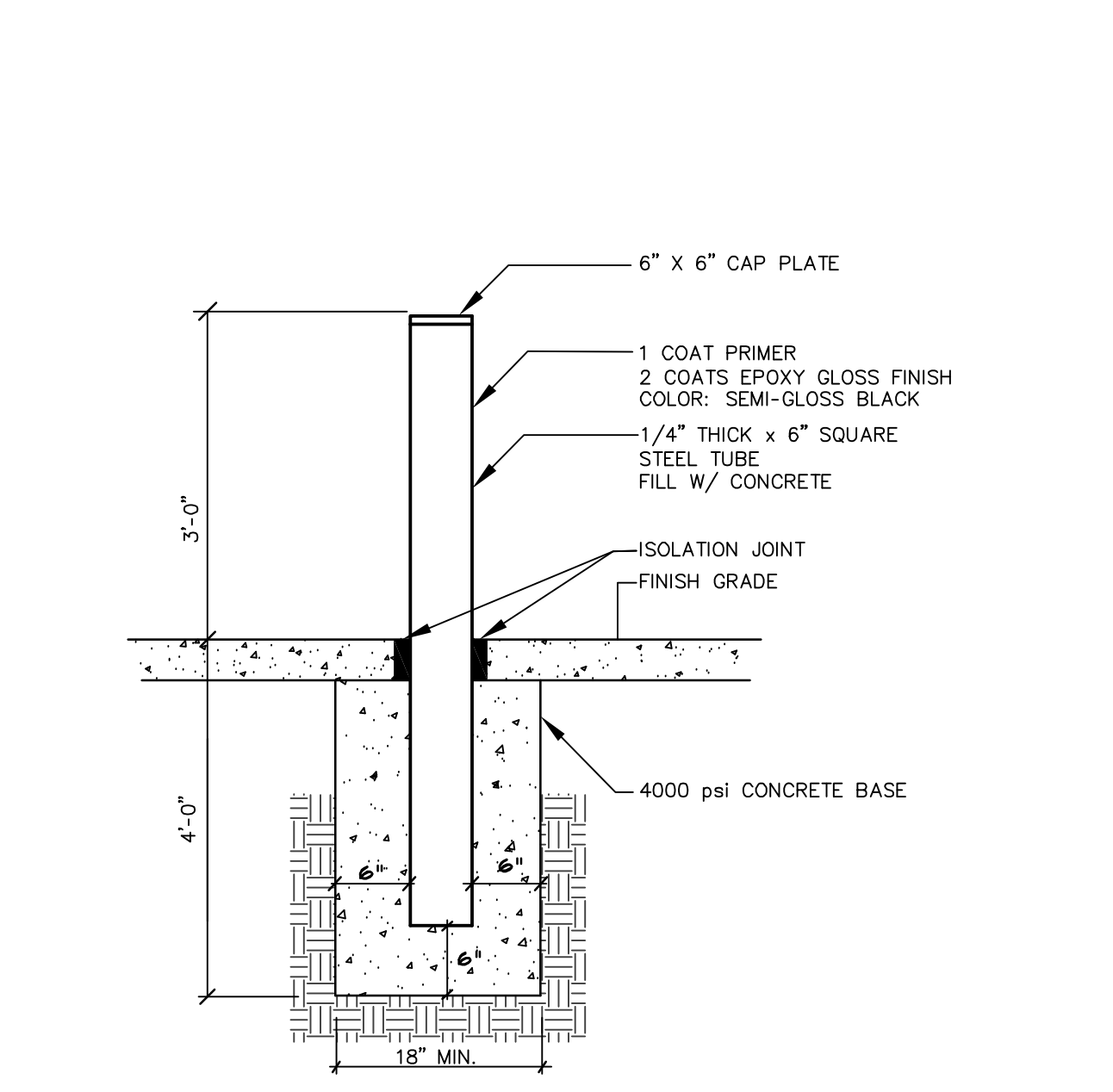


BRICK PEDESTRIAN RAMP
NOT TO SCALE

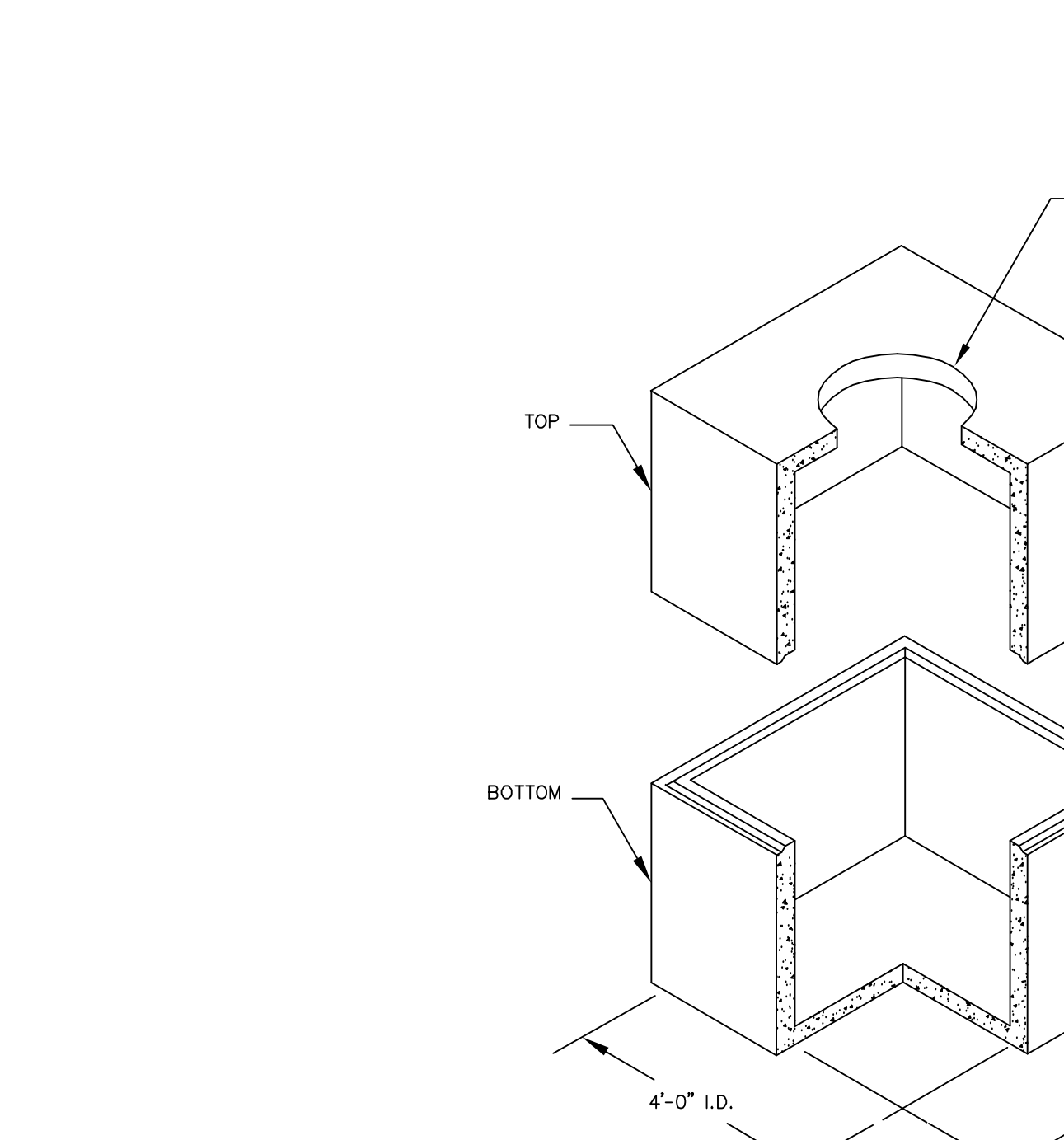
NOTE:
1. SEE BRICK SIDEWALK DETAILS FOR SECTION.



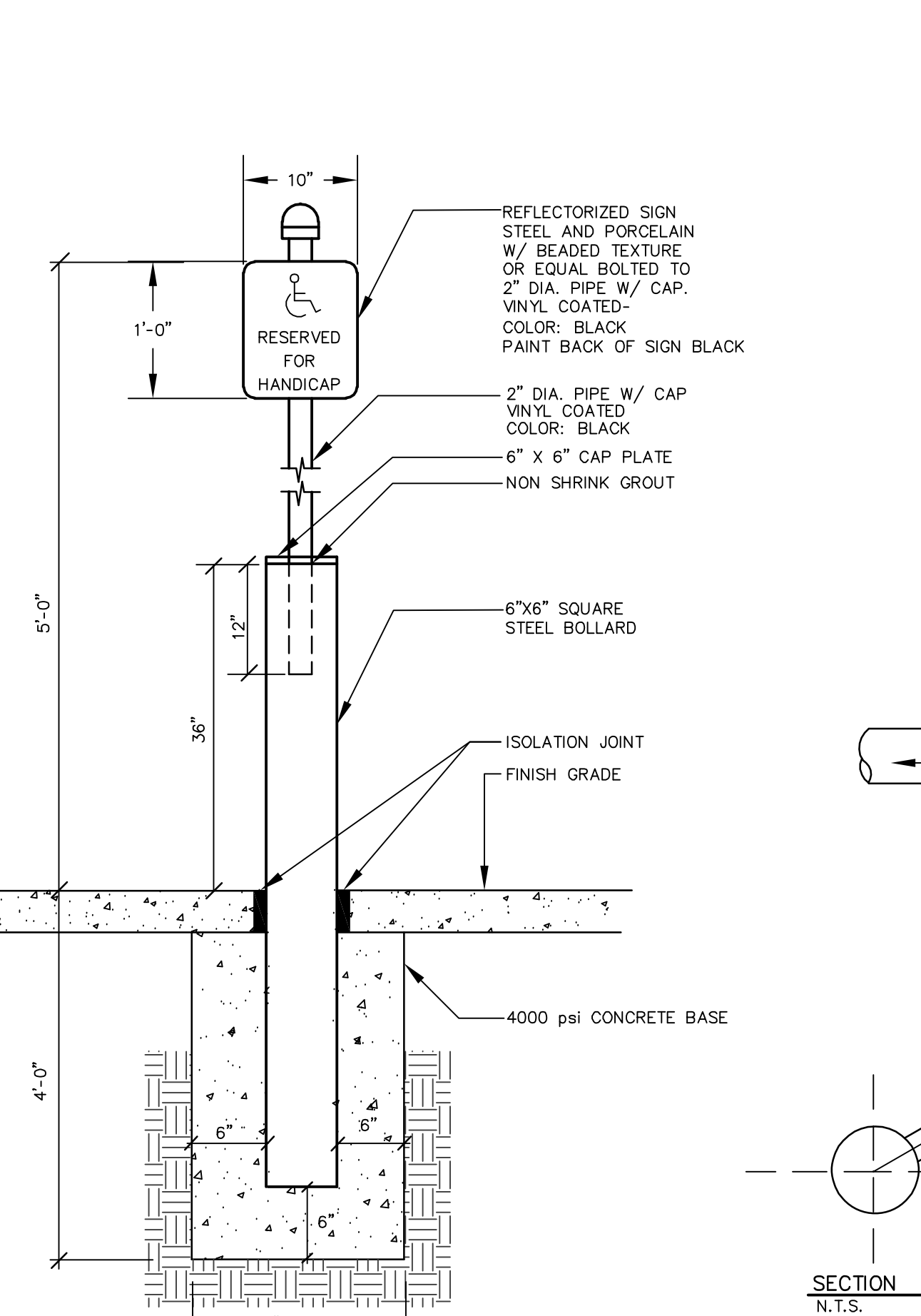
STRIPING DETAIL
NOT TO SCALE



STEEL BOLLARD MOUNTED SIGN
NOT TO SCALE

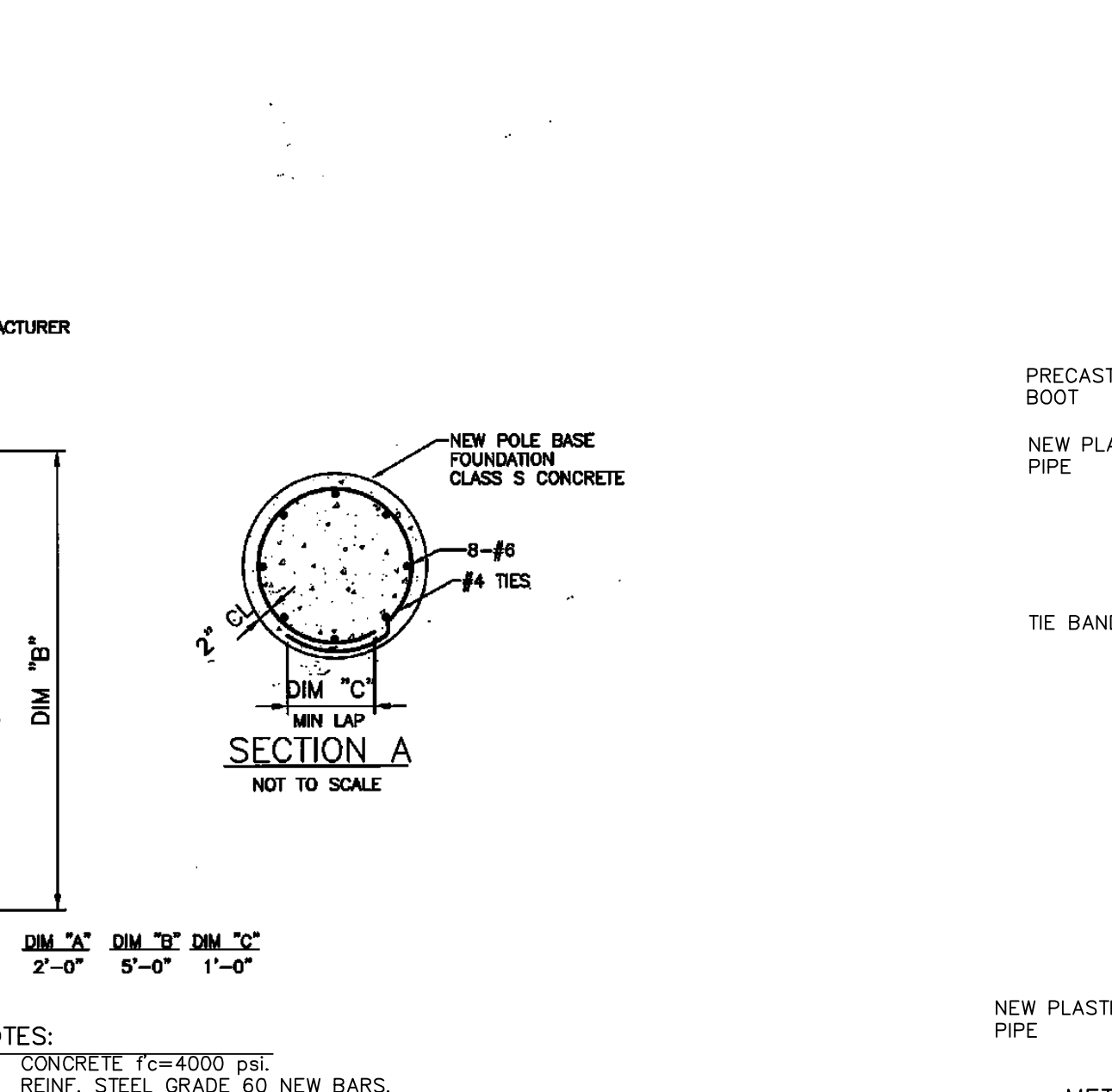


UTILITY MANHOLE
NOT TO SCALE



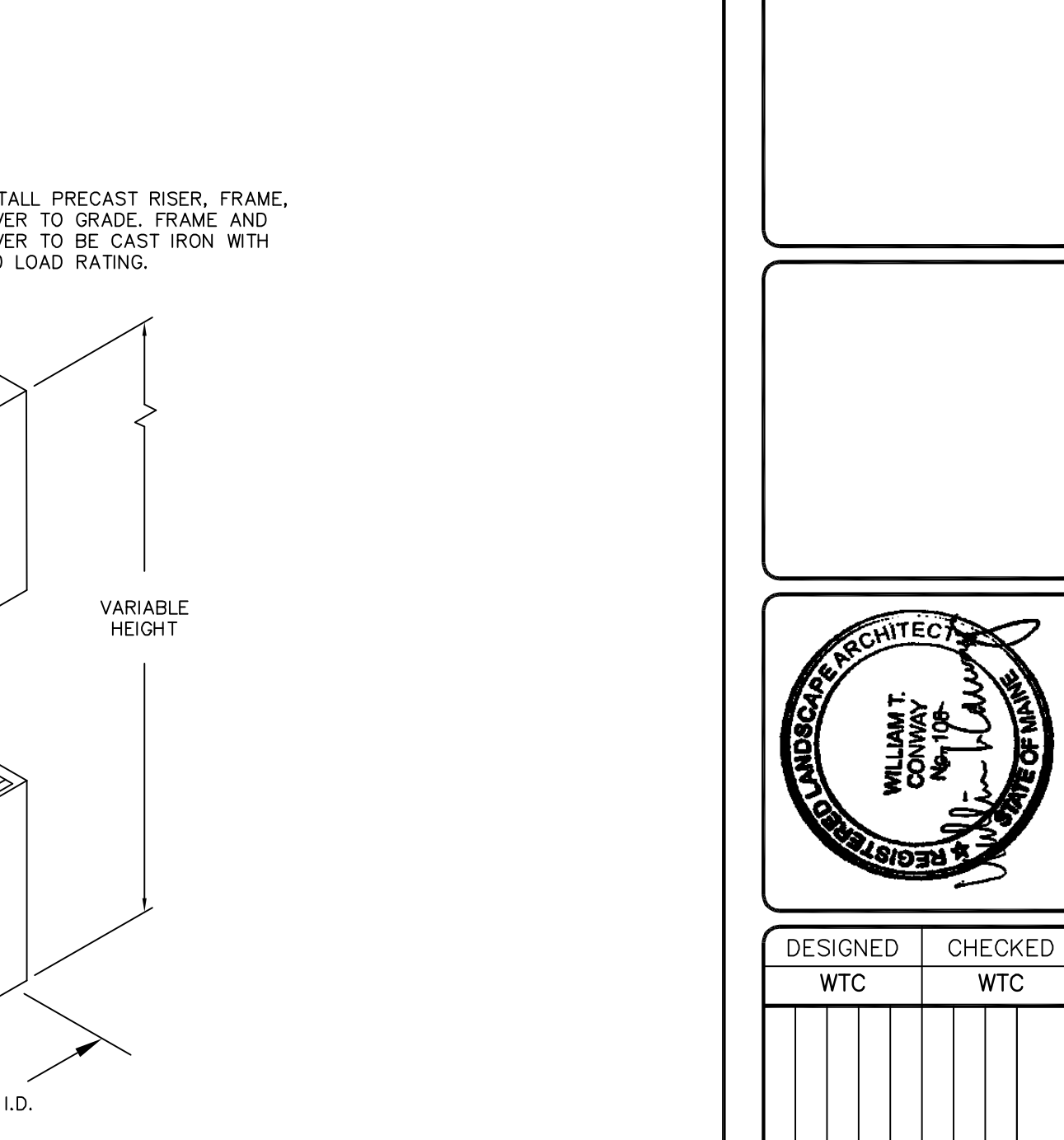
SEWER / FOUNDATION DRAIN SERVICE CONNECTION
NOT TO SCALE

NOTE:
1. INSTALL BACKFLOW VALVE WITH RUBBER SEAL IN EACH FOUNDATION DRAIN SERVICE.
2. IF SUMP PUMP IS UTILIZED INSTALL CHECK VALVE AT SUMP PUMP.

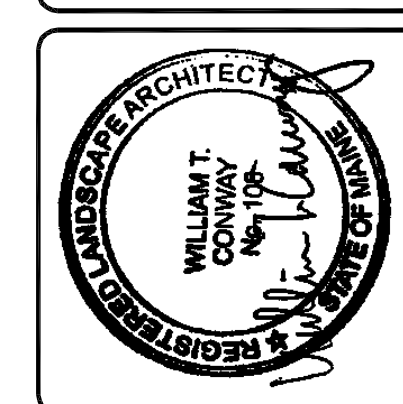


TYPICAL LIGHT POLE BASE
NOT TO SCALE

NOTE:
1. CONCRETE Fc=4000 PSI.
2. REINF. STEEL GRADE 60 NEW BARS.
3. CONCRETE (1\"/>



PLASTIC PIPE CONNECTIONS
NOT TO SCALE



DESIGNED	CHECKED
WTC	WTC
SUBMITTED FOR SITE PLAN REVIEW AND APPROVAL	
DATE: 3/4/16	STATUS:
REV. BY:	DATE:

SEBAGO
ENGINEERS
75 John S. Bates Rd.
South Portland, ME 04106
Tel. 207-282-2100

INDIA NEWBURY RESIDENCES, LLC
50-62 INDIA STREET
PORTLAND, MAINE
35 FAY ST., STE. 107B
ROSBURY, MA 02119

PROJECT NO.	SCALE
14164	NTS
SHEET 10 OF 11	