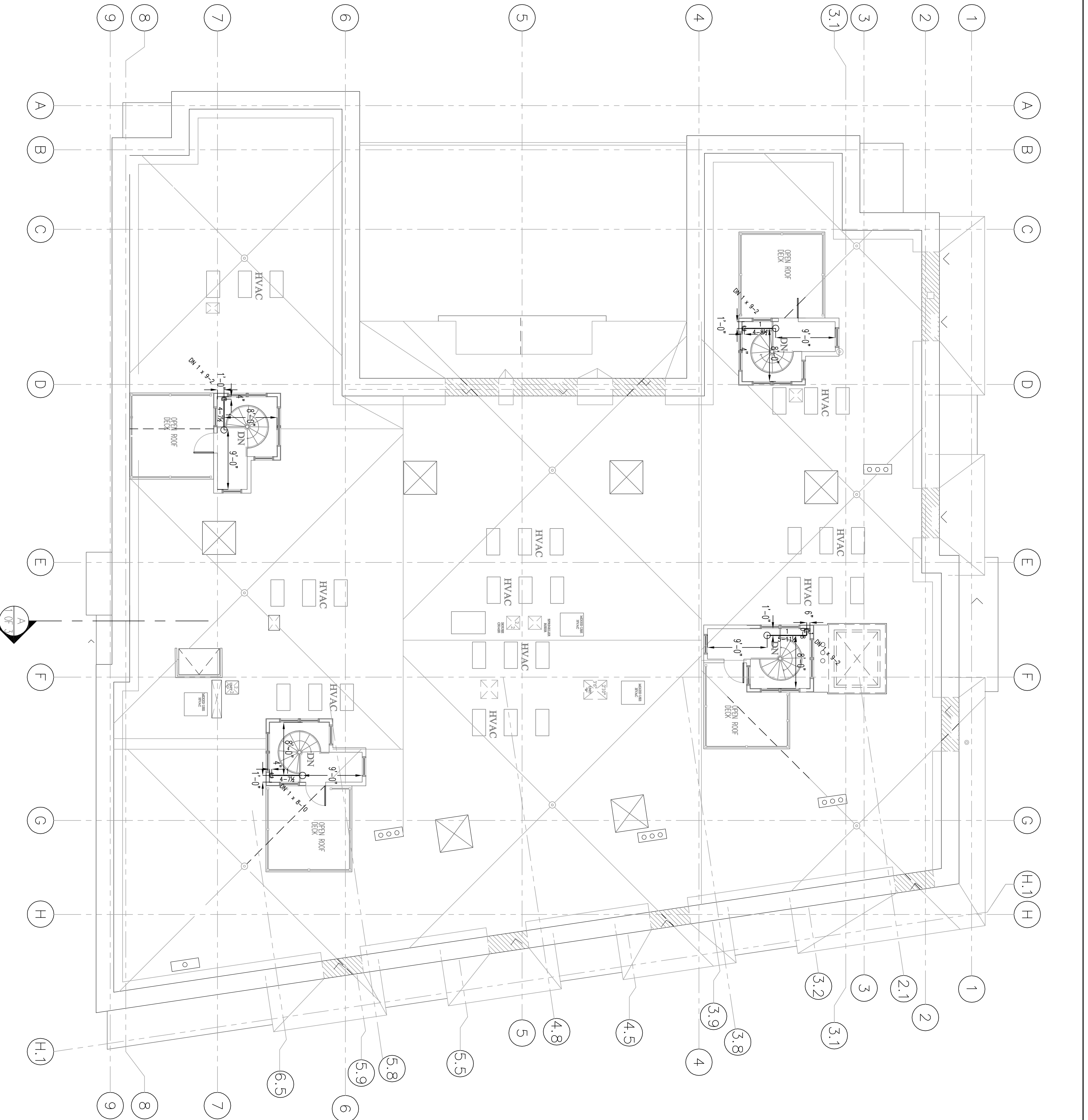


Fourth Floor Sprinkler Head Schedule

Symbol	Count	Thread	K-Factor	Description	Note
⊙	136	1/2"	4.9	RELIABLE FAST-ACT SPRINKLER RESPONSE 145° RESIDENTIAL CONCEALED PENDENT WITH WHITE COVER PLATE	on Spng
⊙	4	1/2"	5.6	RELIABLE FTR66 SIMPRN+425 QUICK RESPONSE 200R BRASS	on Spng
⊙	4	1/2"	5.6	RELIABLE FTR66 SIMPRN+425 QUICK RESPONSE 200R BRASS	on Spng
⊙	82	1/2"	5.6	RELIABLE KTR-CES SIMPRN+425 QUICK RESPONSE 212° BRASS UPRIGHT	on Spng

228 = Total Number of Heads This Floor



Roof Sprinkler Head Schedule

Symbol	Count	Thread	K-Factor	Description	Note
○	4	1/2"	5.6	RELIABLE FTR66 SIMPRN+425 QUICK RESPONSE 200R BRASS UPRIGHT	on Line

4 = Total Number of Heads This Floor

GENERAL NOTES

SPRINKLER SYSTEM INSTALLATION TO COMPLY WITH NFPA 13 (2016) AND NFPA 13.6 (2016) SHALL BE INSTALLED IN ACCORDANCE WITH THE LATEST EDITIONS OF THE NFPA STANDARDS. ALL SPRINKLER SYSTEMS SHALL BE INSTALLED IN ACCORDANCE WITH THE LATEST EDITIONS OF THE NFPA STANDARDS. ALL SPRINKLER SYSTEMS SHALL BE INSTALLED IN ACCORDANCE WITH THE LATEST EDITIONS OF THE NFPA STANDARDS.

REVISIONS

NO.	DATE	REVISIONS

REQUIRED APPROVALS

OWNER / ARCHITECT	DATE
STATE FIRE MARSHAL	
PORTLAND FIRE DEPT.	

CONTRACT WITH: LANDRY FRENCH CONSULTANTS

62 INDIA ST. PORTLAND, ME.

EASTERN FIRE PROTECTION
AUBURN, LEWISTON INDUSTRIAL AIRPARK, AUBURN, MAINE 04210

FIRE SPRINKLER PLANS & DETAILS

DWG. NO.	DATE
3 OF 3	5/3/17

JOB NUMBER: 5583-SP-17
SCALE: AS NOTED