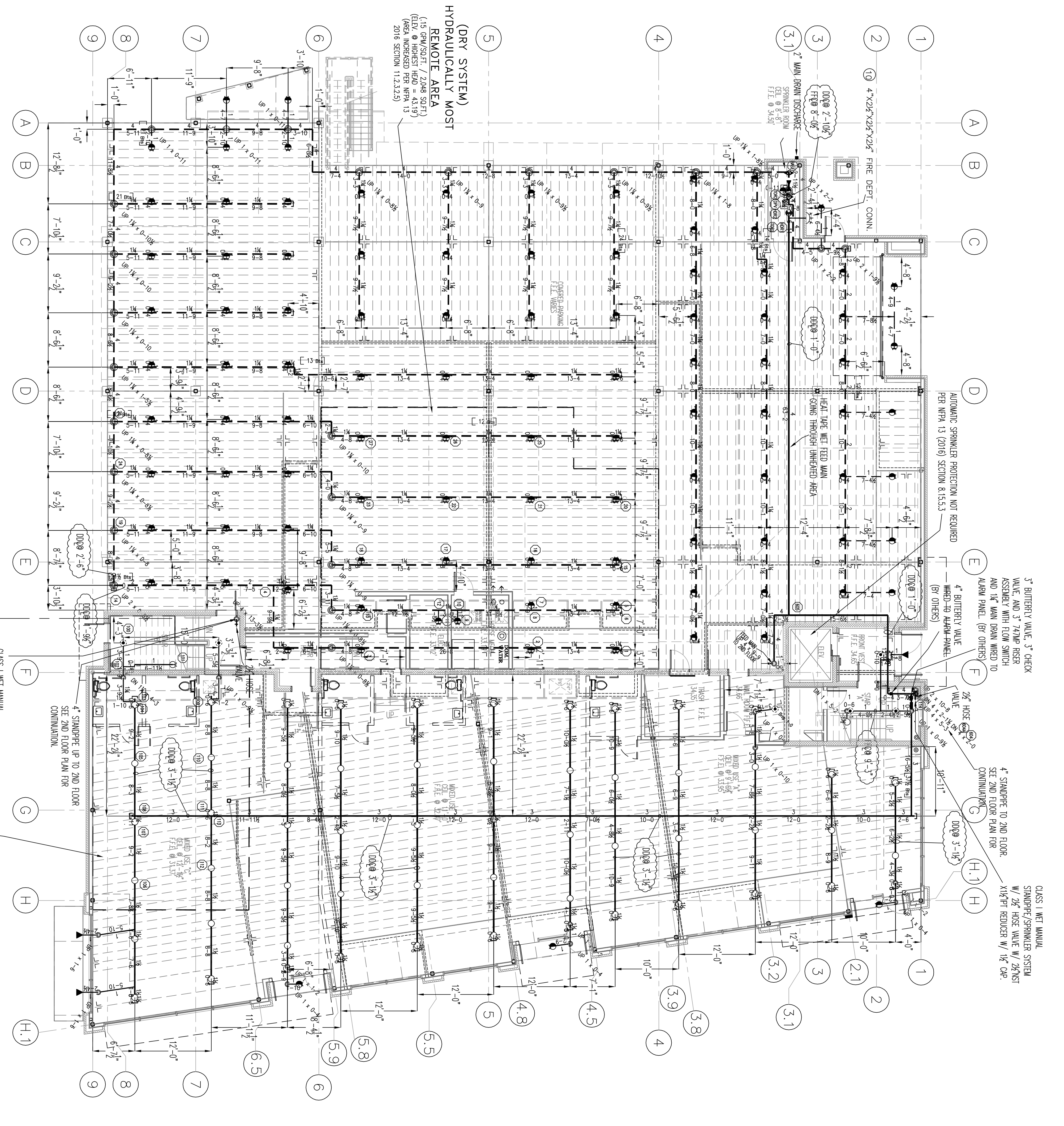


**GENERAL NOTES**

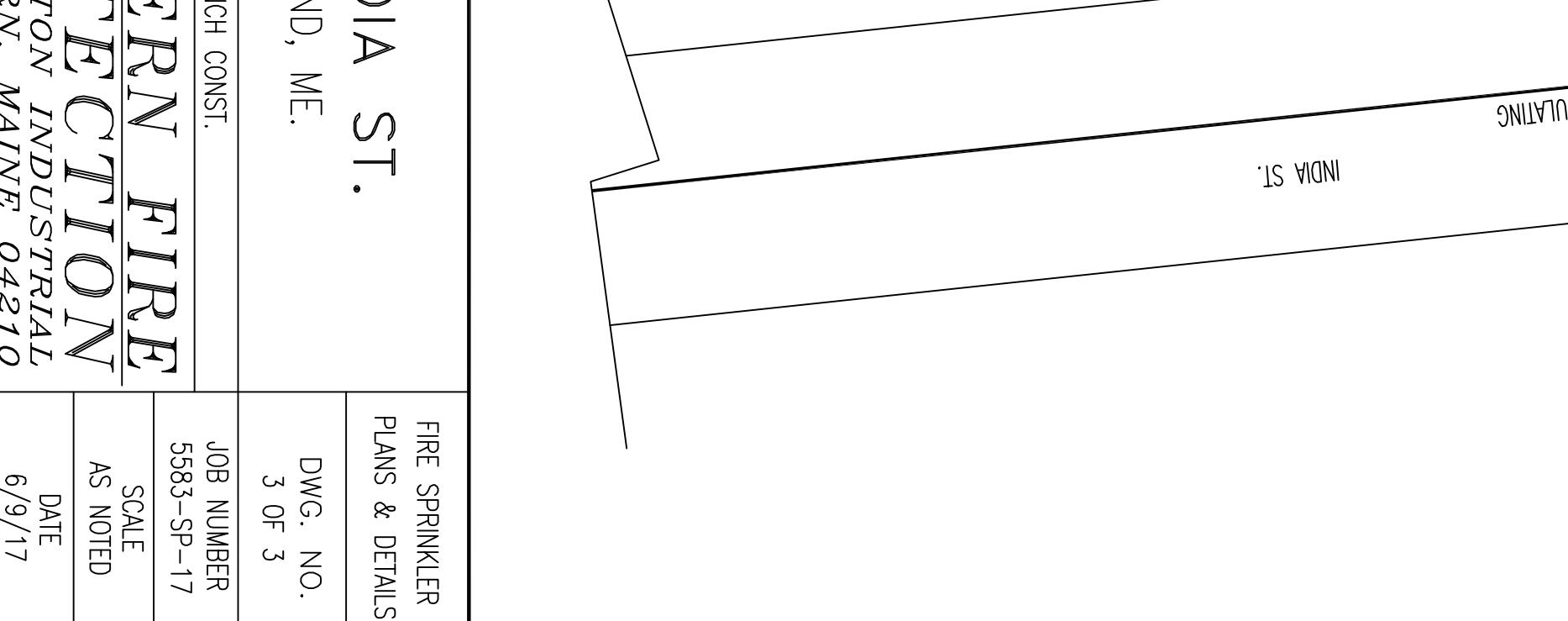
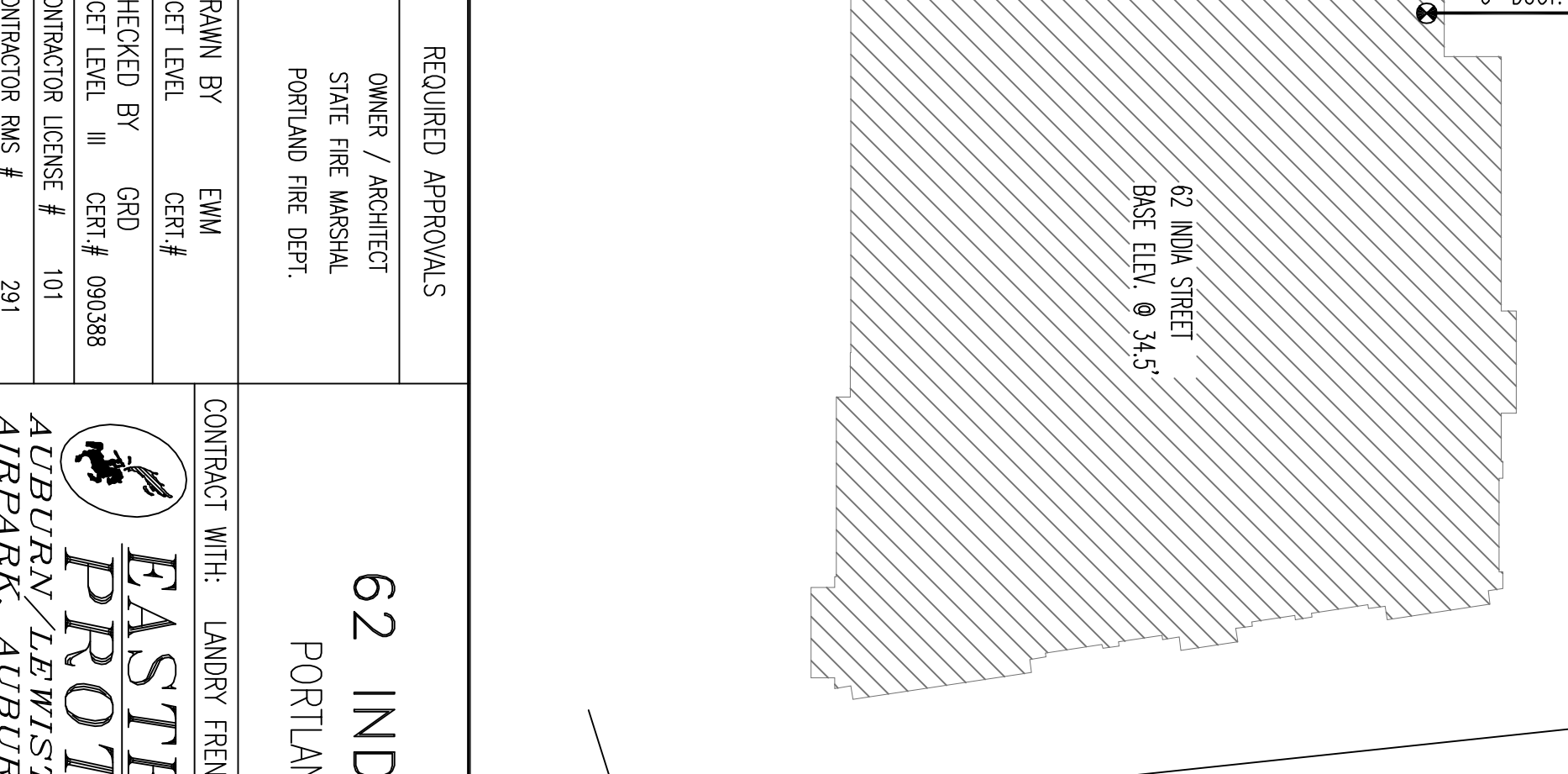
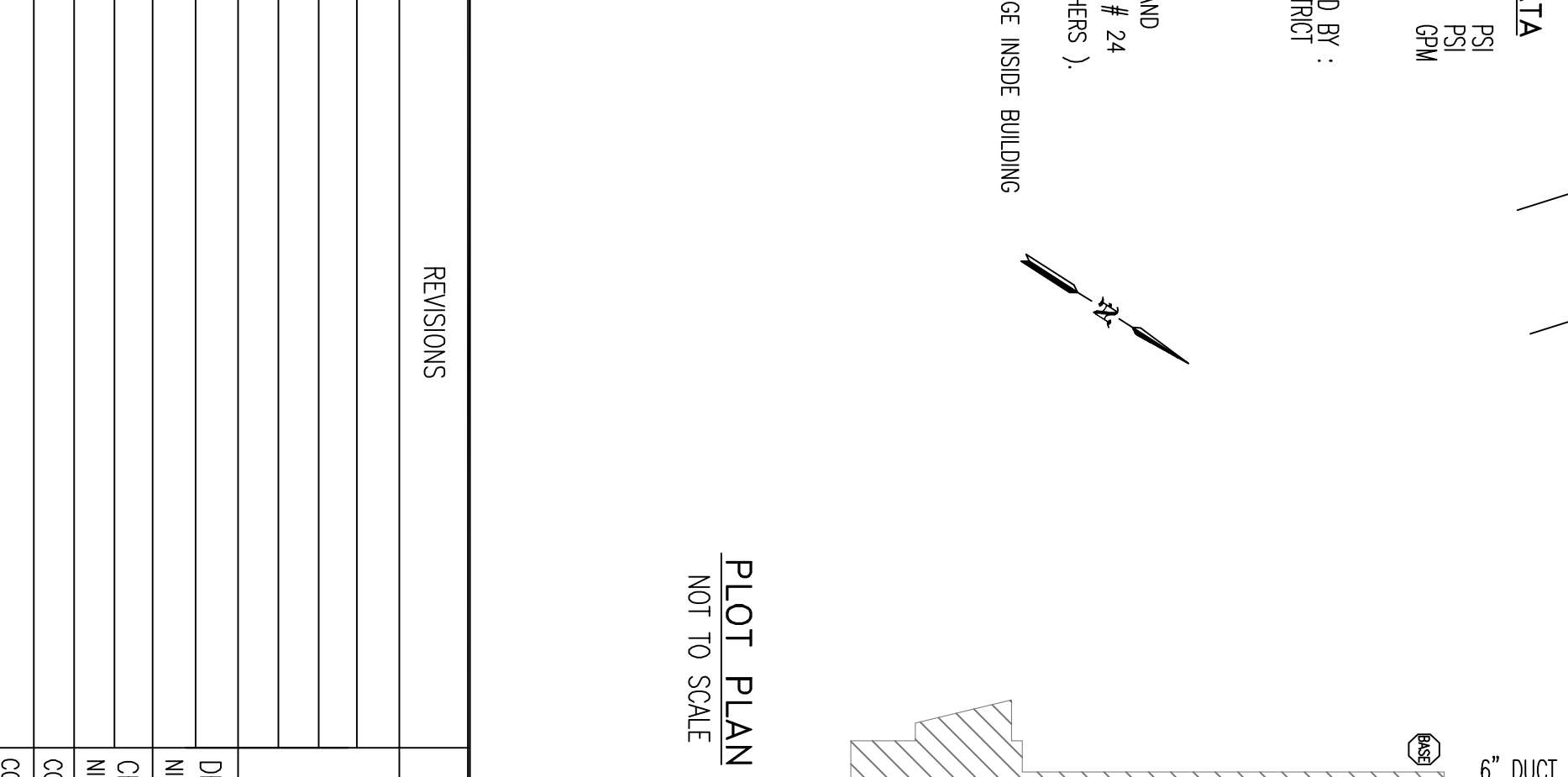
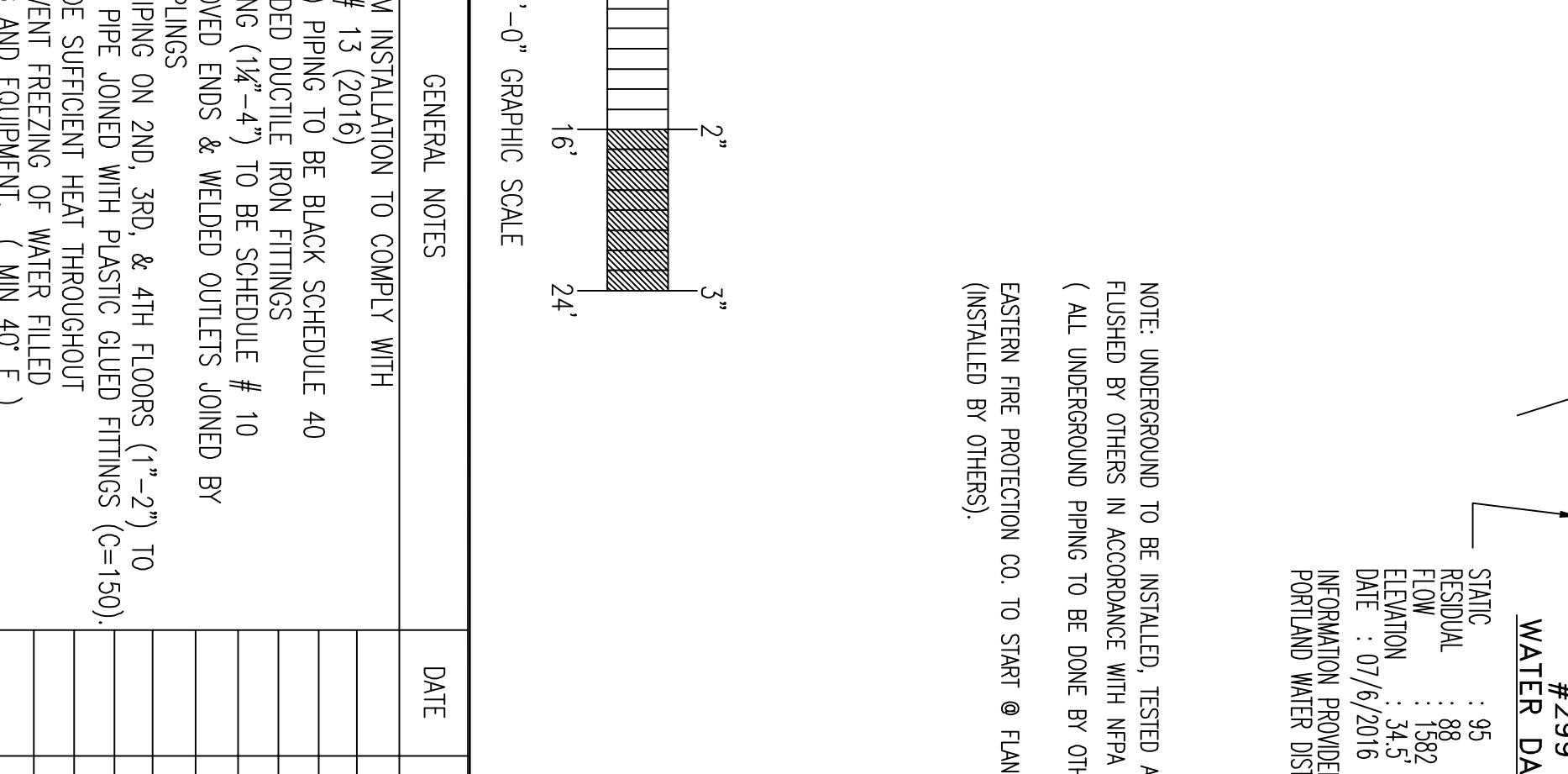
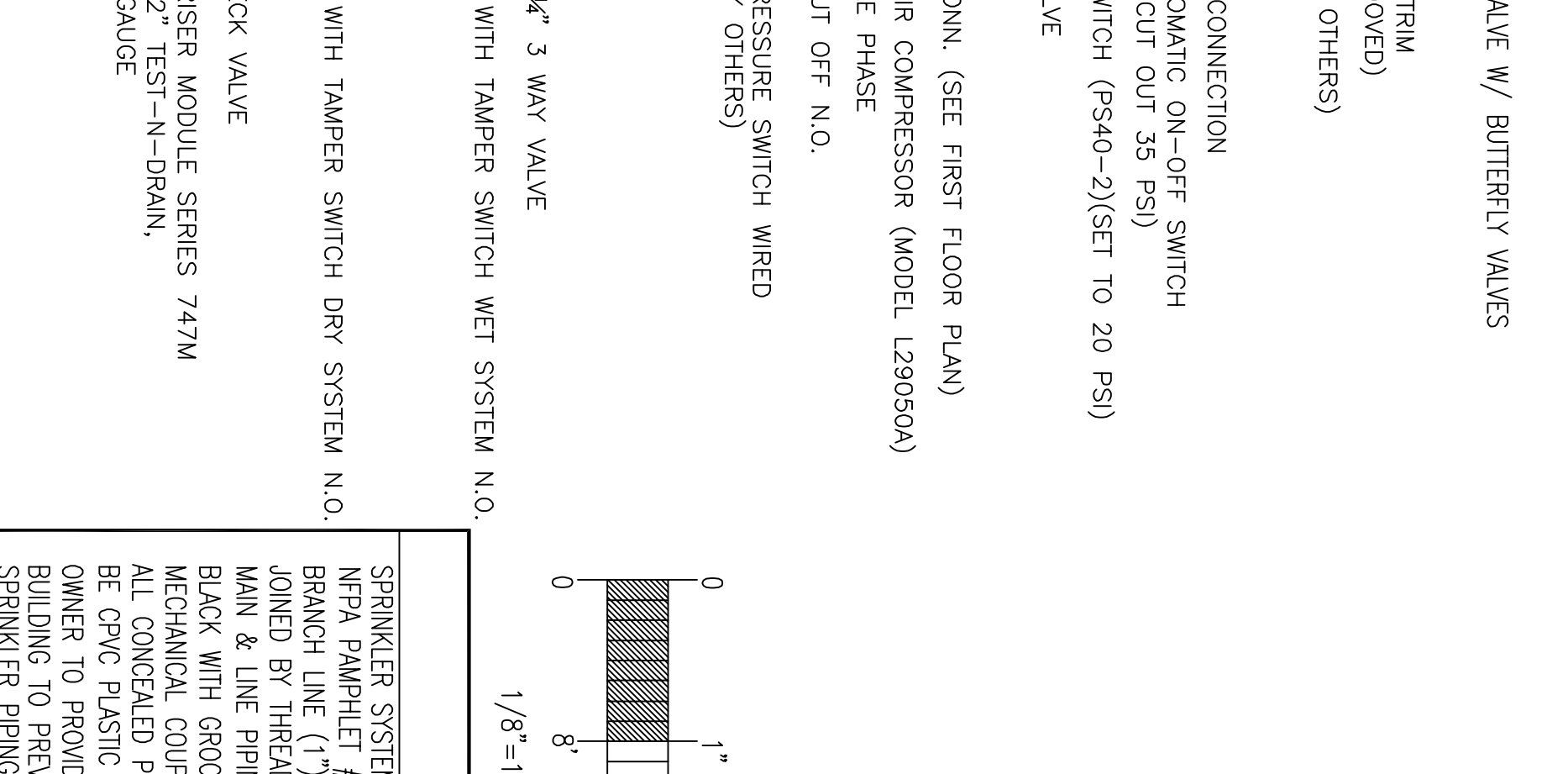
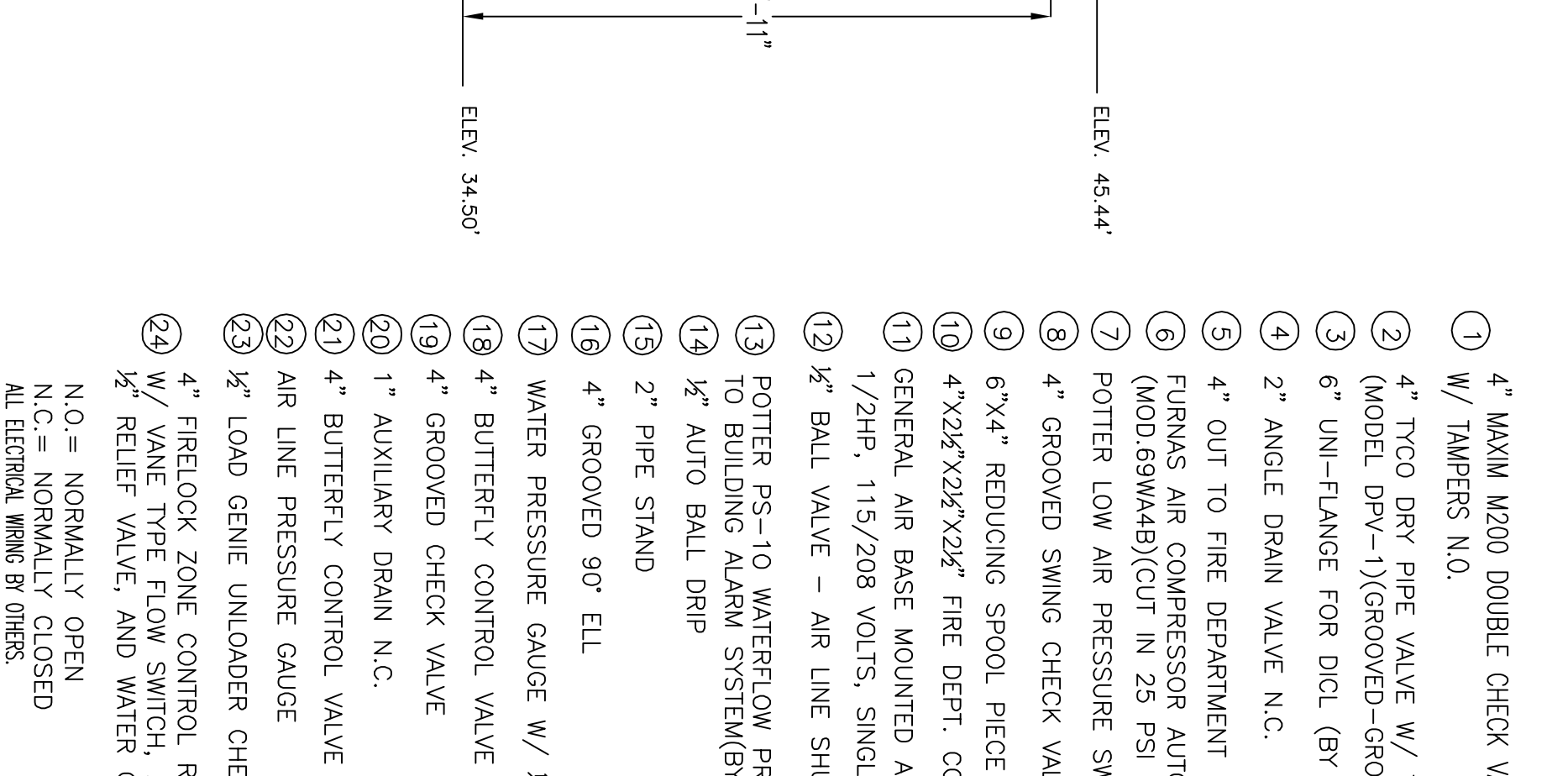
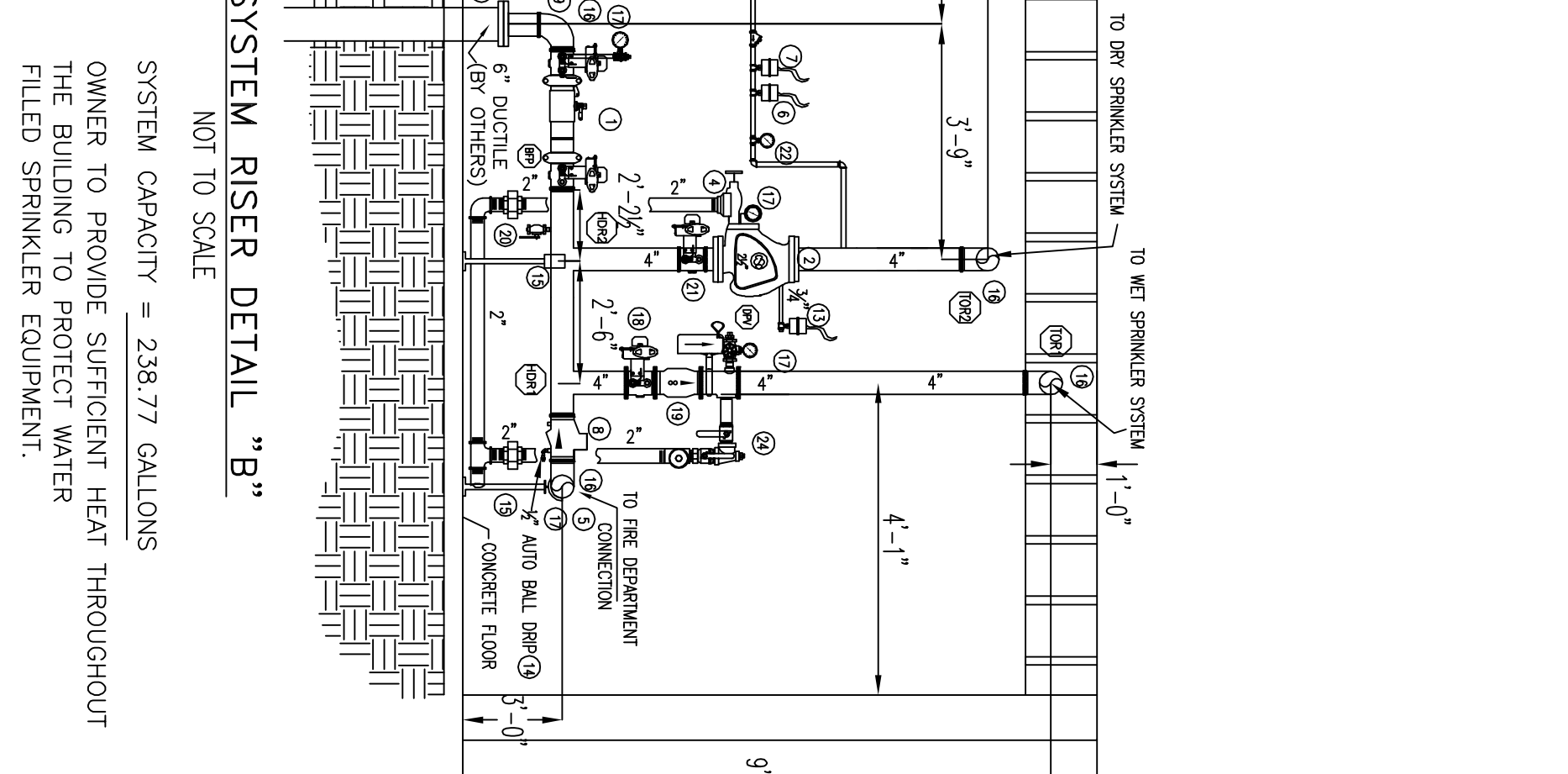
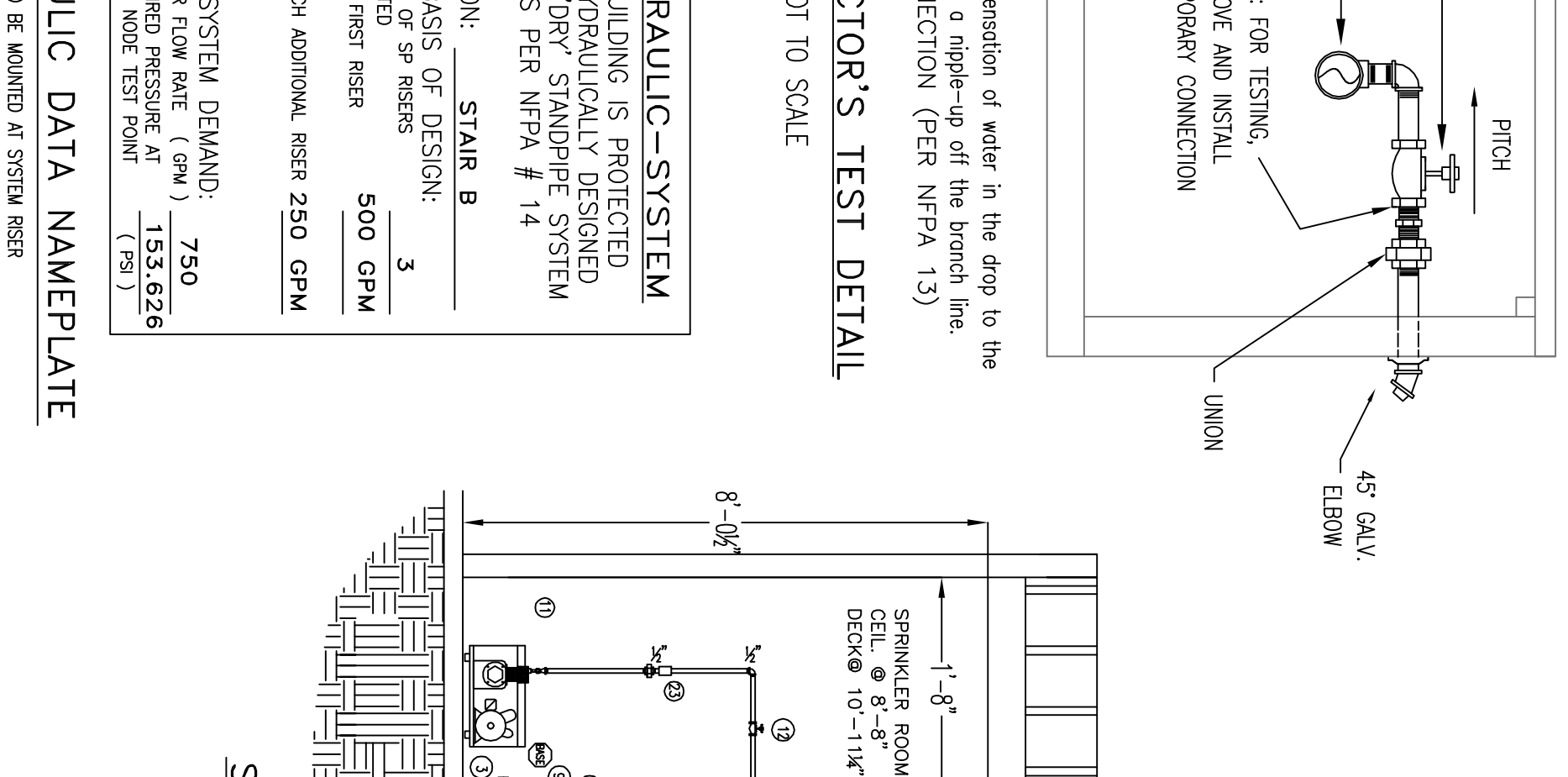
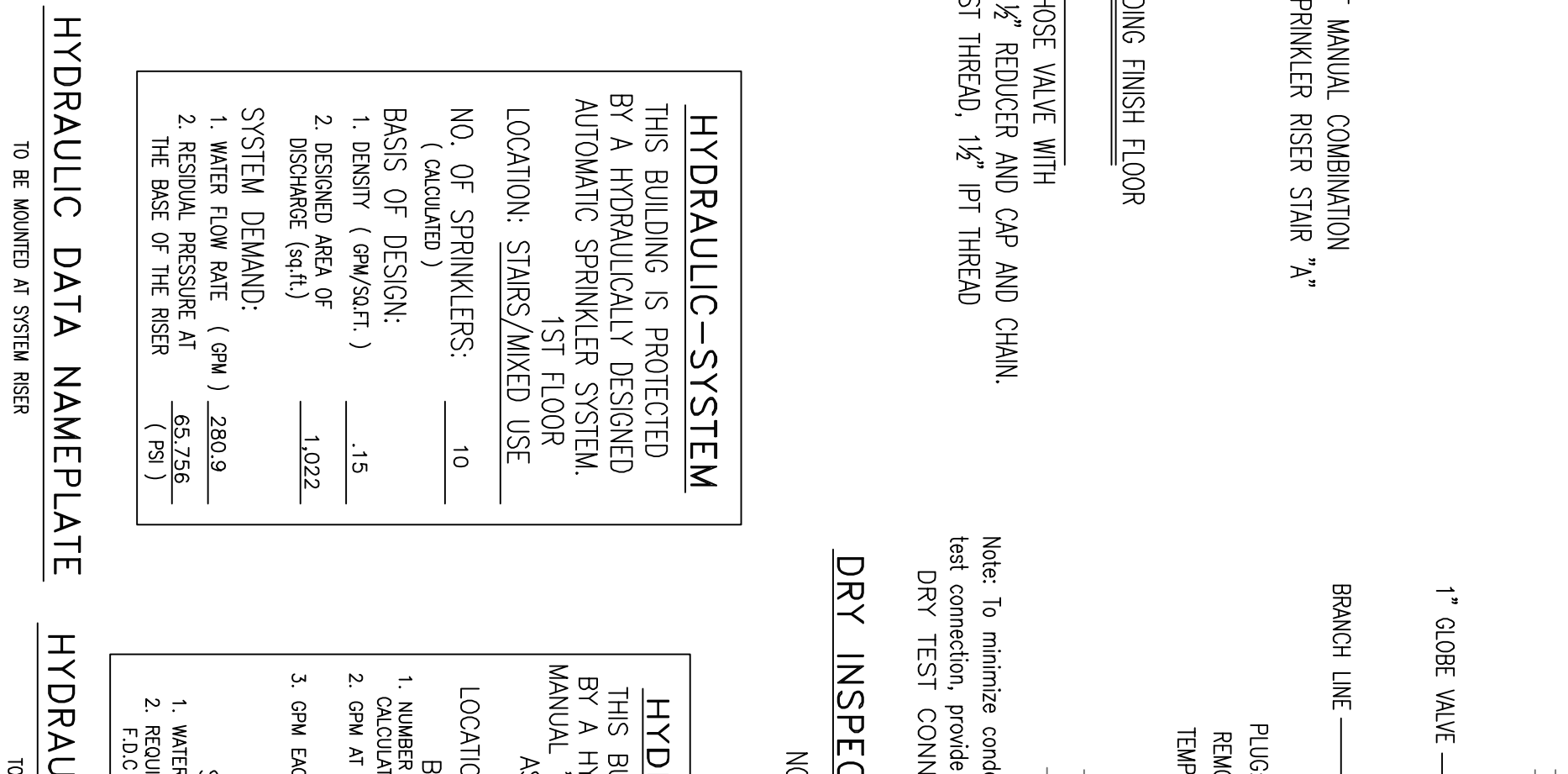
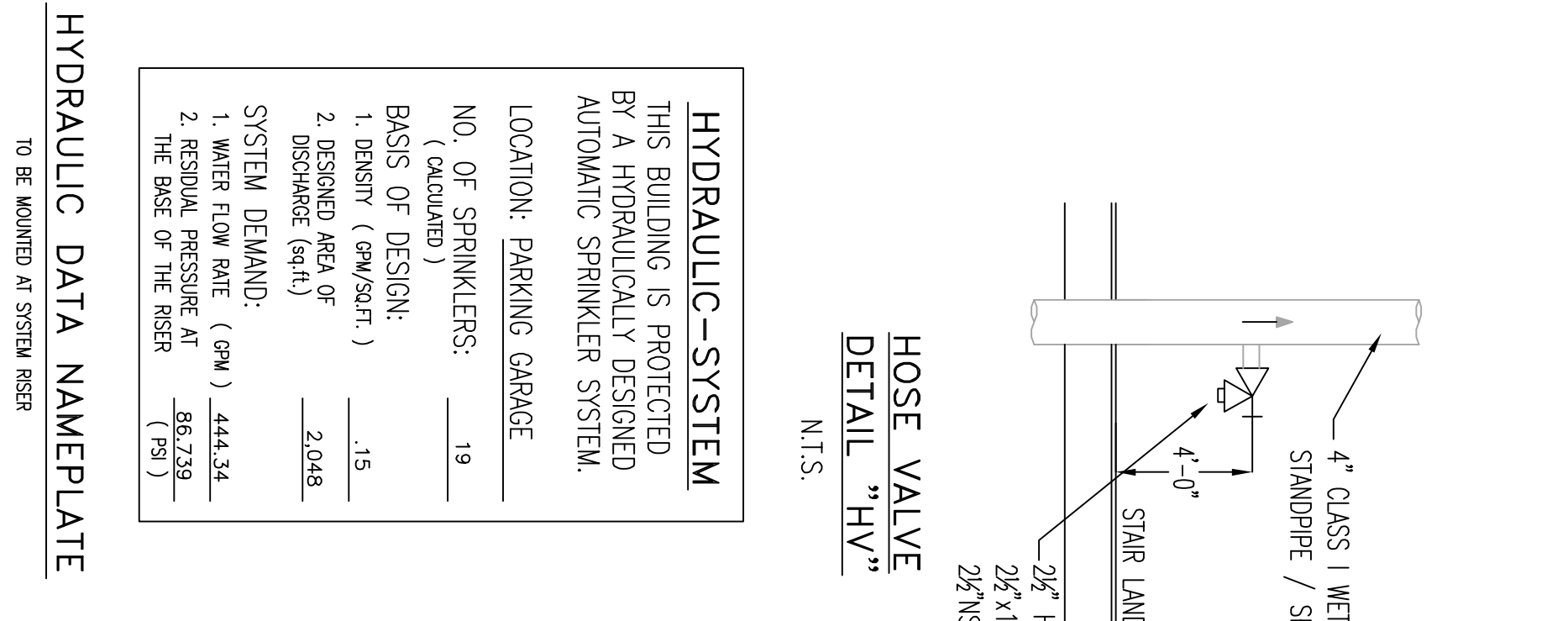
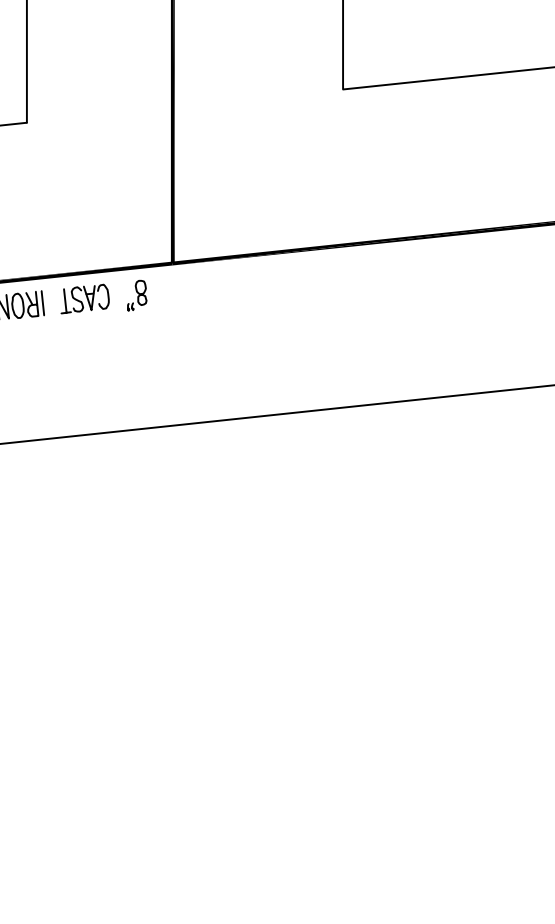
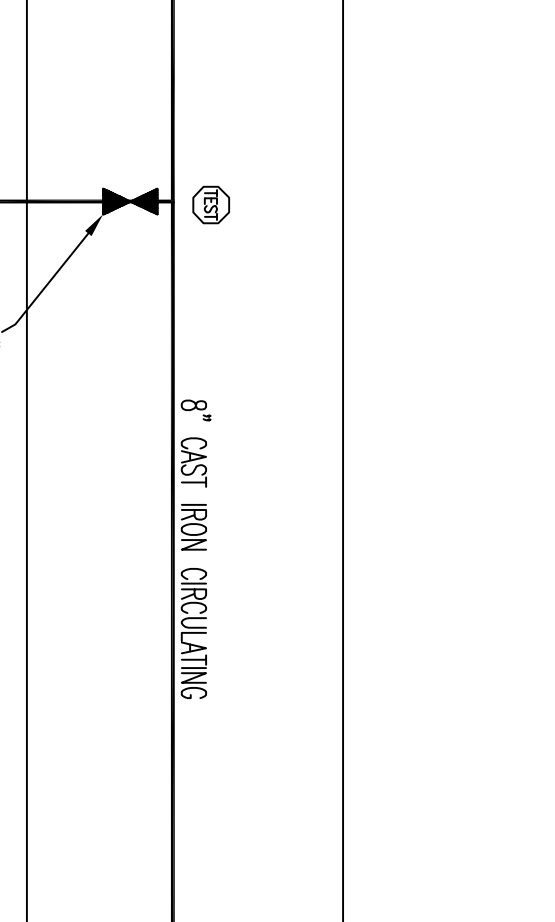
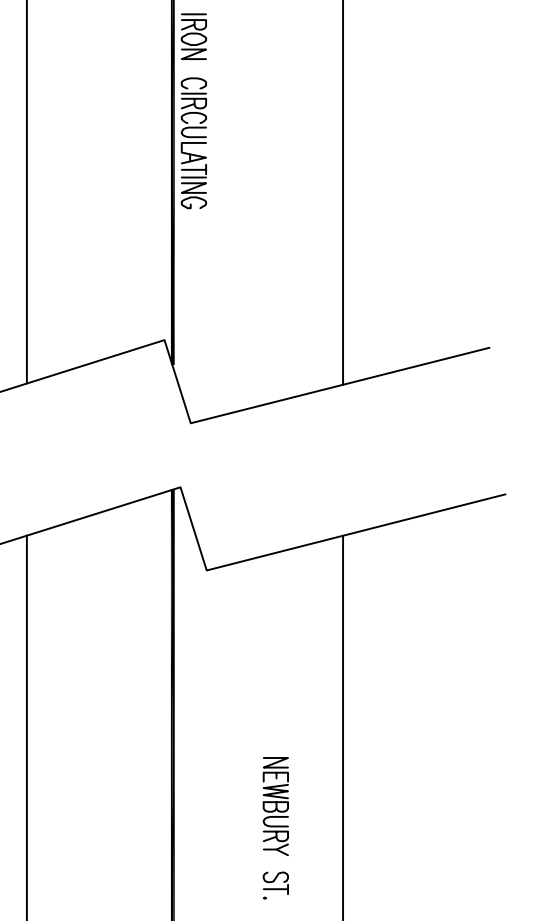
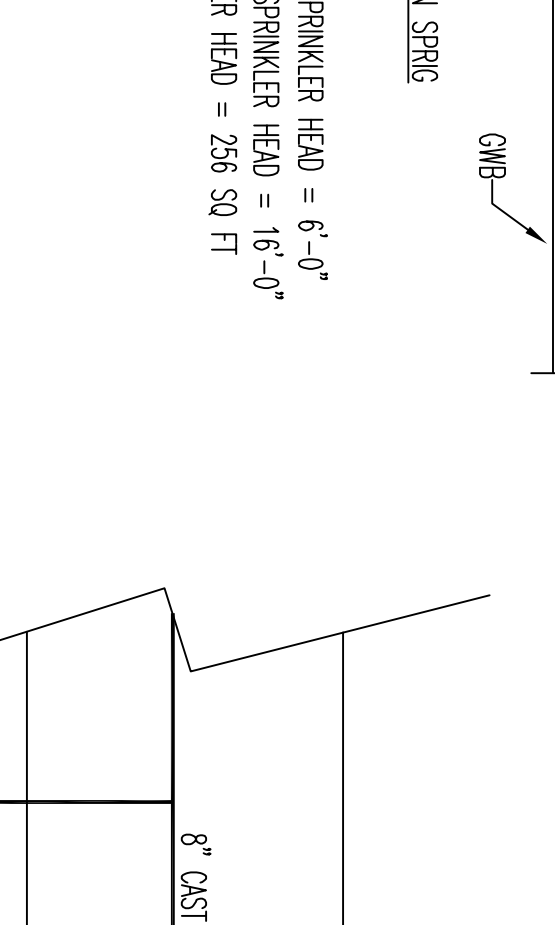
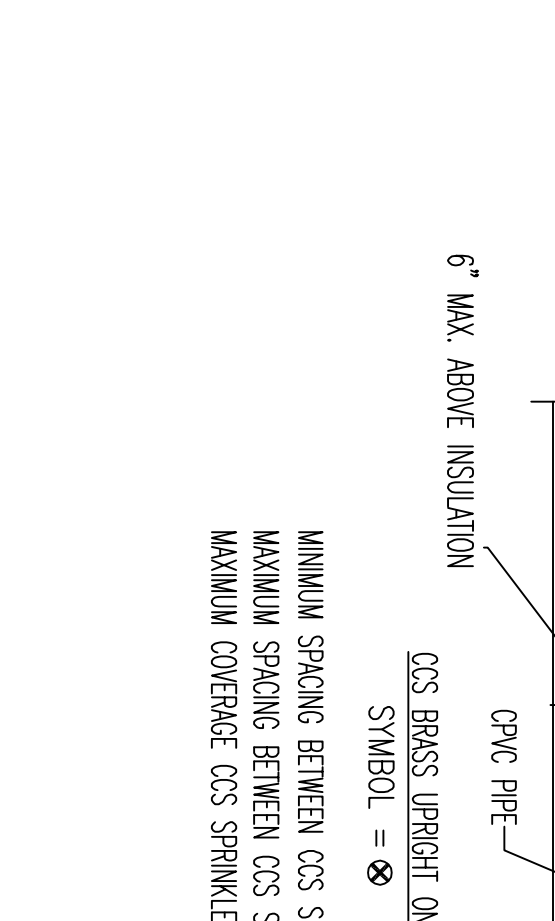
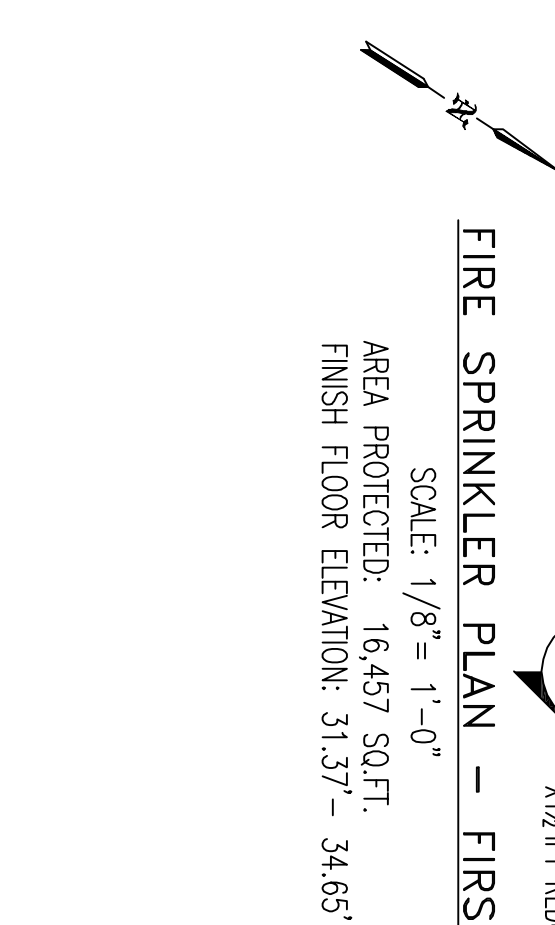
- SPRINKLER SYSTEM INSTALLATION TO COMPLY WITH NFPA 13 (2016) NFPA 14 (2003).
- SCOPE OF WORK: INSTALL (1) NEW DRY SPRINKLER SYSTEM THROUGHOUT THE FIRST FLOOR PARKING LEVELS, INSTALL (1) NEW CLASS 1 WET MANUAL COMBINATION SPRINKLER SYSTEM THROUGHOUT THE FIRST FLOOR REMOIST AREA, SECOND FLOOR, THIRD FLOOR, AND ROOF TERRACE FLOORS. E.P. TO BEEN WORK AT 6" FANDED OUTLET 12" A.F.F. INSIDE THE BUILDING.
- COORDINATE HARDWARE AND ASSOCIATION: LOCKER, CORRUGATED STEEL, DWELING UNITS.
- CONCRETE HAZARD AND ASSOCIATION: SPRINKLER/MECH. ELECTRICAL ROOM.
- ALL DIMENSIONS ARE SHOWN FOR GENERAL LOCATION OF SPRINKLER HEADS. DIMENSIONS MAY VARY TO SUIT ACTUAL FIELD CONDITIONS.
- STORAGE OF MATERIAL SHALL NOT EXCEED 8'-0" IN HEIGHT.
- ALL WORKING TO BE DONE BY OTHERS.
- ALL PAINTING BY OTHERS.
- INDICATES HYDRANT REFERENCE POINTS.
- FF-C INDICATES FINISH FLOOR UP TO CENTERLINE OF PIPE.
- DD-C INDICATES DECK DOWN TO CENTERLINE OF PIPE.
- BL-C INDICATES BOTTOM OF JOIST DOWN TO CENTERLINE OF PIPE.
- INDICATES DRY SPRINKLER PIPE: - - - - -
- INDICATES WET SPRINKLER PIPE: ———
- AS PER NFPA 13, 2016 PAR. 8.16.2.1.1 PER SYSTEM, BRASS LINE PIPING SHALL BE FINISHED AT LEAST 1/2" F.F.F. 10'-0" MAIN PIPING SHALL BE FINISHED AT LEAST 1/4" F.F.F. 10'-0"



**First Floor Sprinkler Head Schedule**

| Symbol | Count | Thread | K-Factor                                    | Description                                 | Note    |
|--------|-------|--------|---|---|---------|
| ○      | 54    | 1/2"   | 5.6   | RELIABLE FF785 SNIWA425 QUICK RESPONSE 200T | on line |
| ●      | 1/2"  | 5.6    | RELIABLE FF785 SNIWA425 QUICK RESPONSE 200T | on line                                     |         |
| ◐      | 104   | 1"     | 5.6   | RELIABLE FF30 SNIWA5714 200T CONCEALED DRY  | on line |
| ◑      | 3     | 1"     | 5.6   | RELIABLE FF30 SNIWA5714 200T CONCEALED DRY  | on line |

157 = Total Number of Heads This Floor



**62 INDIA ST. PORTLAND, ME.**

**EASTERN FIRE PROTECTION**

AUBURN, LEWISTON INDUSTRIAL PARK, AUBURN, MAINE 04210

DATE: 5/3/17

JOB NUMBER: 5583-S-17

SCALE: AS NOTED

DWG. NO.: P&S & DETAILS

FIRE SPRINKLER

REQUIRED APPROVALS:

| DATE | REVISIONS |
|------|-----------|
|      |           |