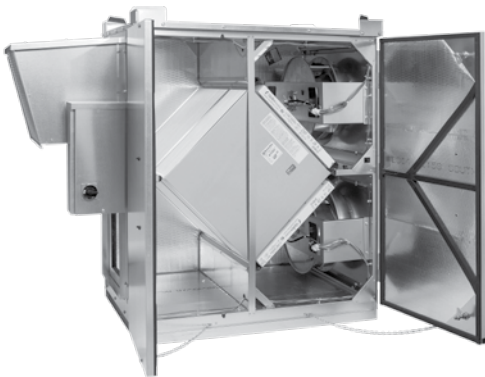


HE 1.5XRT STANDARD



ROOFTOP UNIT



SPECIFICATIONS

Ventilation Type:

Static plate, heat and humidity transfer

Typical Airflow Range: 375-1,575 CFM

AHRI 1060 Certified Core:

One L62-G5 and one L125-G5

Standard Features:

Non-fused disconnect
24 VAC transformer/relay package

Filters:

Total qty. 4, MERV 8: (2) 14" x 20" x 2" and
(2) 16" x 20" x 2"

Unit Dimensions & Weight:

86" L x 33 1/4" W x 56 3/4" H
387-514 lbs., varies by option(s)

Max. Shipping Dimensions & Weight (on pallet):

70" L x 47" W x 83" H
580 lbs.

Motor(s):

Qty. 2, 1.0 HP ea., Direct drive standard motorized
impeller packages

Options:

Qty. 2, ECM Motor (see ECM spec) -
1.0 HP 120V/1Ph/60HZ,
1.0 HP 208-230V/1Ph/60HZ
Factory supplied and mounted variable frequency
drives (VFDs) - one or both airstreams
Fused disconnect
Double wall construction
Gravity backdraft dampers
**Motorized isolation dampers - OA, EA or
both airstreams**
Qty. 2, Factory mounted filter alarms
Independent blower control
Exterior paint - white, custom colors

Accessories:

Filters - MERV 13, 2" (shipped loose)
Backdraft damper - OA or EA
Roof curb - standard 14"
Curb wind clip
Engineered combo curb for Carrier RTU
Engineered combo curb for Trane RTU
Digital time clock - wall mount (TC7D-W),
in exterior enclosure (TC7D-E)
Motion occupancy control - ceiling mount (MC-C),
wall mount (MC-W)
Carbon dioxide control - wall mount (CO2-W),
duct mount (CO2-D)
Electric duct heater - EK series (1-60 kW); designed
for indoor ductwork installation only

AIRFLOW PERFORMANCE

Motor HP Phase	External Static Pressure (Inches Water Column)						
	0.0	0.25	0.50	0.75	1.00	1.25	1.50
1.0 Single Phase	1,535 CFM 1,540 Watts	1390 CFM 1515 Watts	1255 CFM 1485 Watts	1120 CFM 1445 Watts	970 CFM 1395 Watts	815 CFM 1310 Watts	640 CFM 1195 Watts
1.0 Three Phase	1,630 CFM 1,440 Watts	1485 CFM 1435 Watts	1335 CFM 1415 Watts	1170 CFM 1375 Watts	995 CFM 1325 Watts	810 CFM 1260 Watts	615 CFM 1180 Watts

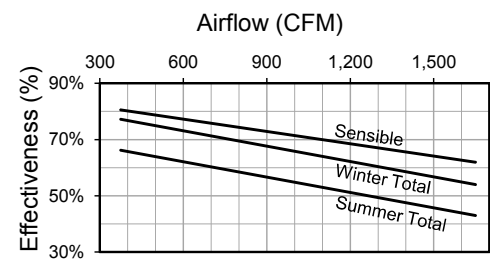
Note: Watts is for the entire unit (2 motors).

Note: Airflow performance includes effect of clean, standard filter supplied with unit.

ELECTRICAL DATA

Standard Electrical Specifications							Optional Factory Installed VFD Electrical Specifications		
HP	Volts	HZ	Phase	FLA per motor	Min. Cir. Amps	Max. Overcurrent Protection Device	FLA per motor	Min. Cir. Amps	Max. Overcurrent Protection Device
1.0	120	60	Single	6.5	14.6	20			
1.0	208-230	60	Single	3.3-3.4	7.7	15			
1.0	277	60	Single	2.7	6.1	15			
1.0	208-230	60	Three	2.2-2.2	5.0	15	2.2 - 2.2	5.4	15
1.0	460	60	Three	1.1	2.5	15	1.1	2.8	15

CORE PERFORMANCE



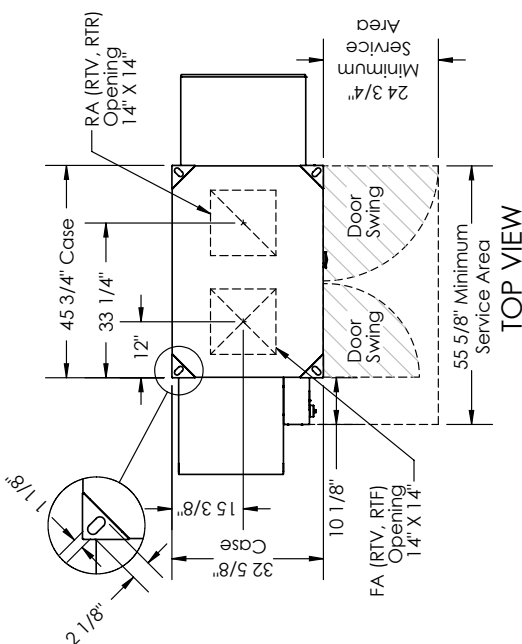
At AHRI 1060 standard conditions.
See all AHRI certified ratings at www.ahrinet.org.

HE1.5XRT STANDARD OR ECM OPTION

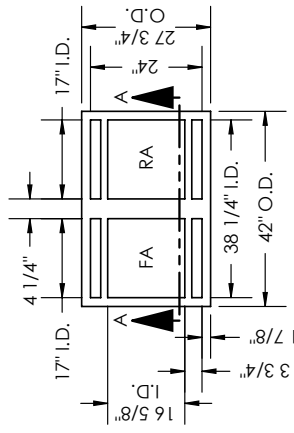
ABBREVIATIONS
 EA: Exhaust Air to outside
 OA: Outside Air intake
 RA: Room Air to be exhausted
 FA: Fresh Air to inside
 RTV: Rooftop Vertical RA & FA
 RTF: Rooftop Vertical FA Only
 RTH: Rooftop Vertical RA Only
 RTR: Rooftop Horizontal RA & FA

INSTALLATION ORIENTATION
 Unit must be installed in orientation shown.

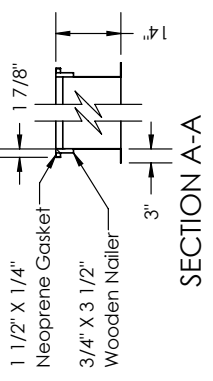
NOTE:
 1. UNLESS OTHERWISE SPECIFIED, DIMENSIONS ARE ROUNDED TO THE NEAREST EIGHTH OF AN INCH.
 2. SPECIFICATIONS MAY BE SUBJECT TO CHANGE WITHOUT NOTICE.



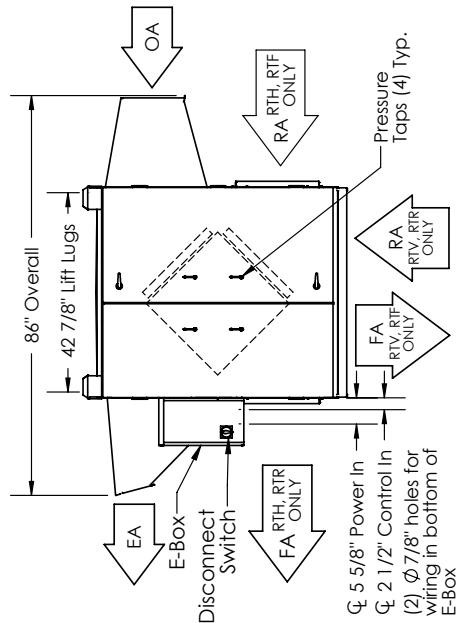
CURB 1.5X



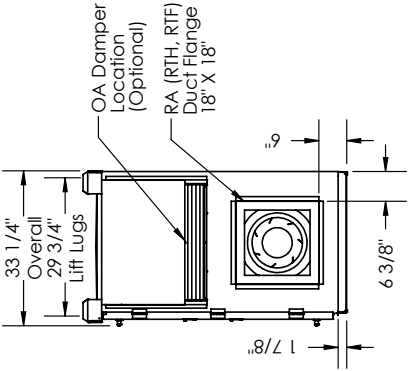
CURB CROSS-SECTION A-A (TYP.)



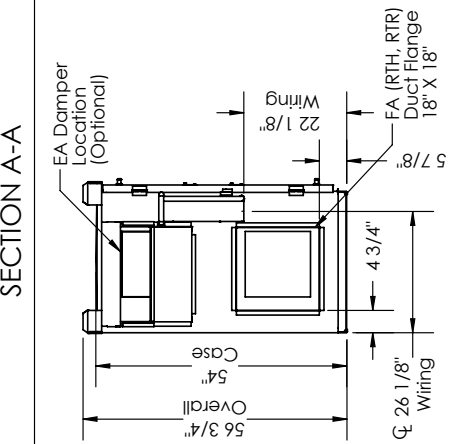
SECTION A-A



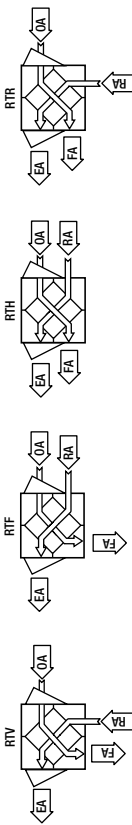
FRONT VIEW



RIGHT VIEW



LEFT VIEW



AIRFLOW CONFIGURATION
 Available as shown:

UNIT MOUNTING & APPLICATION
 Must be mounted as shown. Airstreams can not be switched. Duct configuration is field convertible.

