

**MARK
MUELLER
ARCHITECTS**
A.I.A.
100 Commercial Street
Suite 205
Portland, Maine 04101
Phone: 207.774.9057
Email:
rfi@muellerarchitects.com

© COPYRIGHT 2017
MARK MUELLER ARCHITECTS

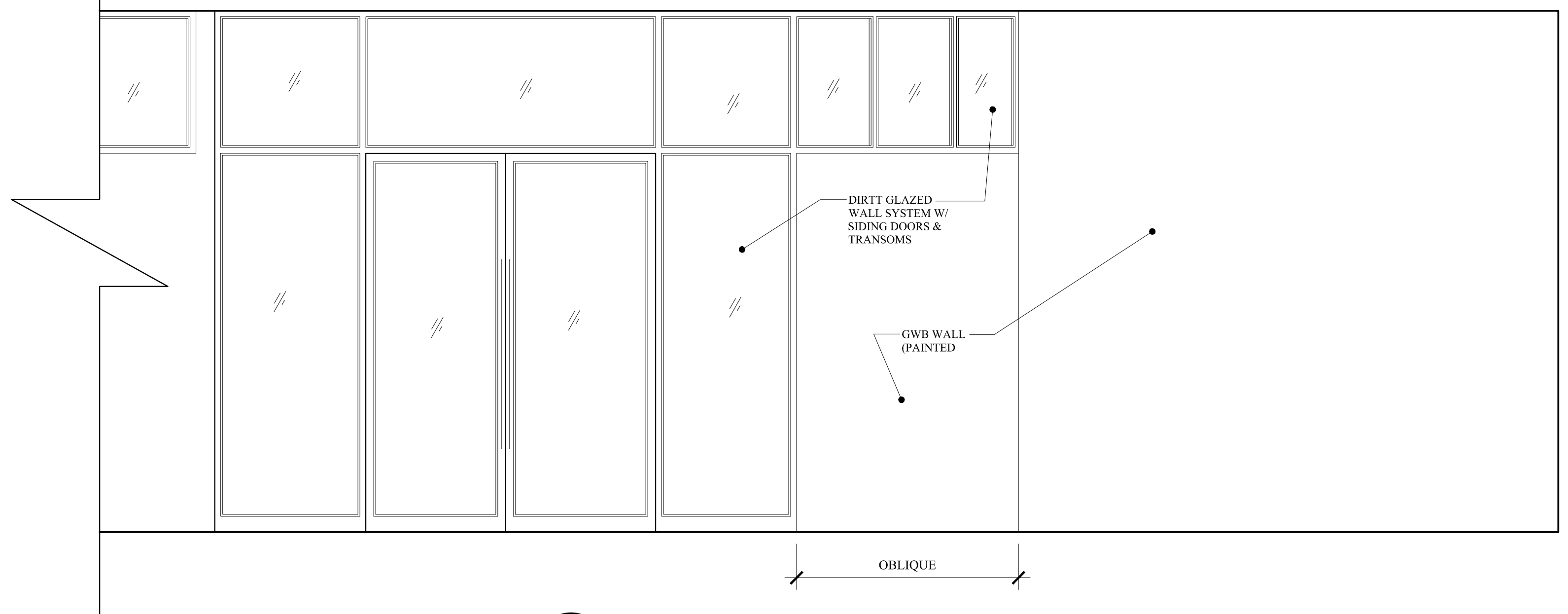


TENANT FIT-UP FOR:
INDIA STREET
62 INDIA STREET
PORTLAND, MAINE 04101

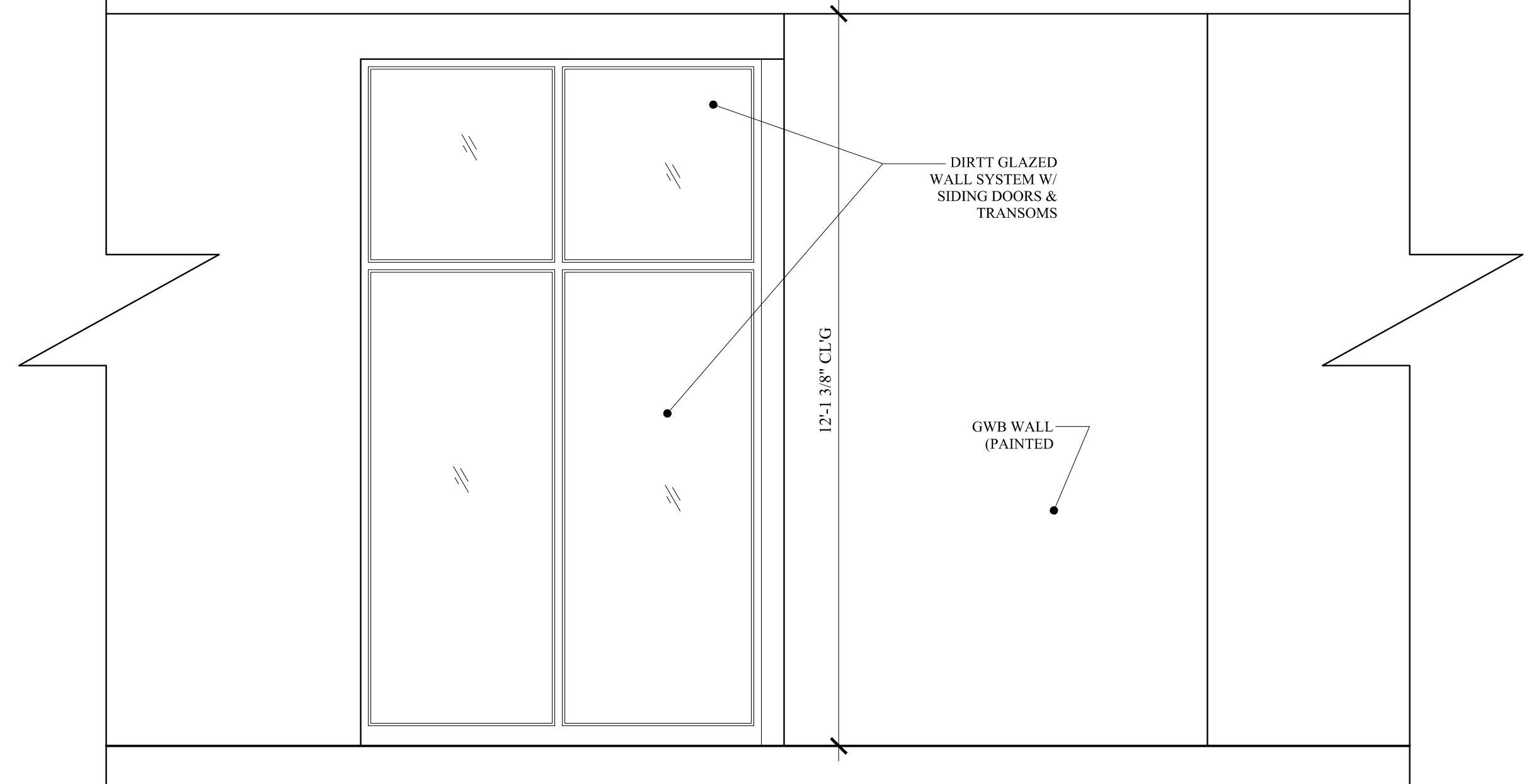
INTERIOR ELEVATIONS
& ADA RESTROOM

REVISIONS
DATE
OCT. 2017
PROJECT
INDIA STREET
DRAWN BY
MRP
CHECKED BY
MAM

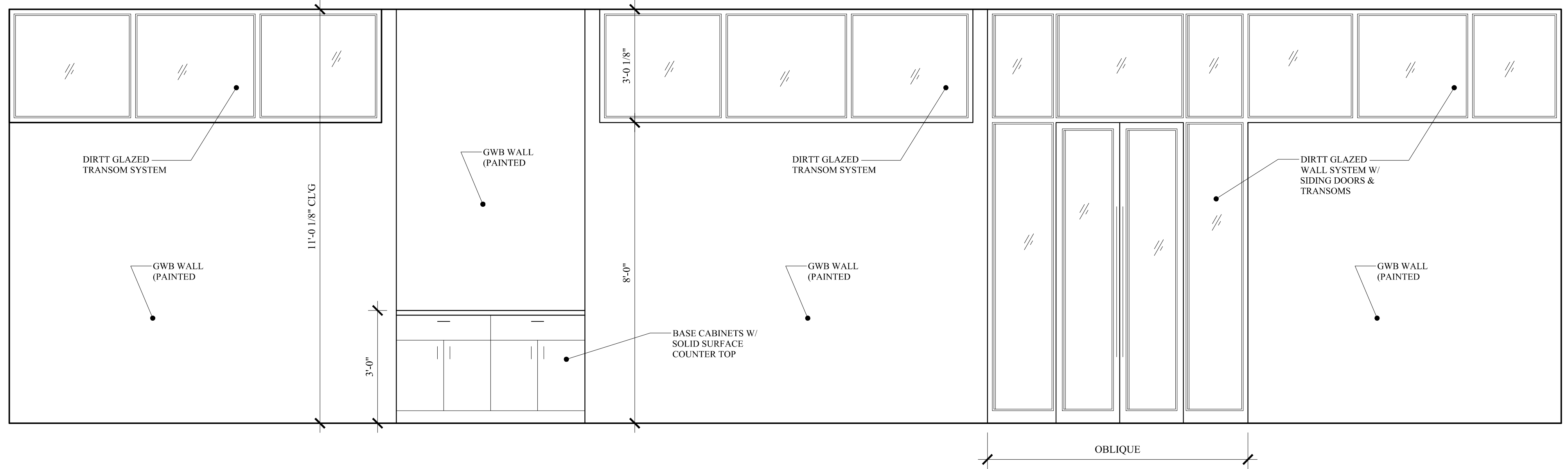
A-1.3



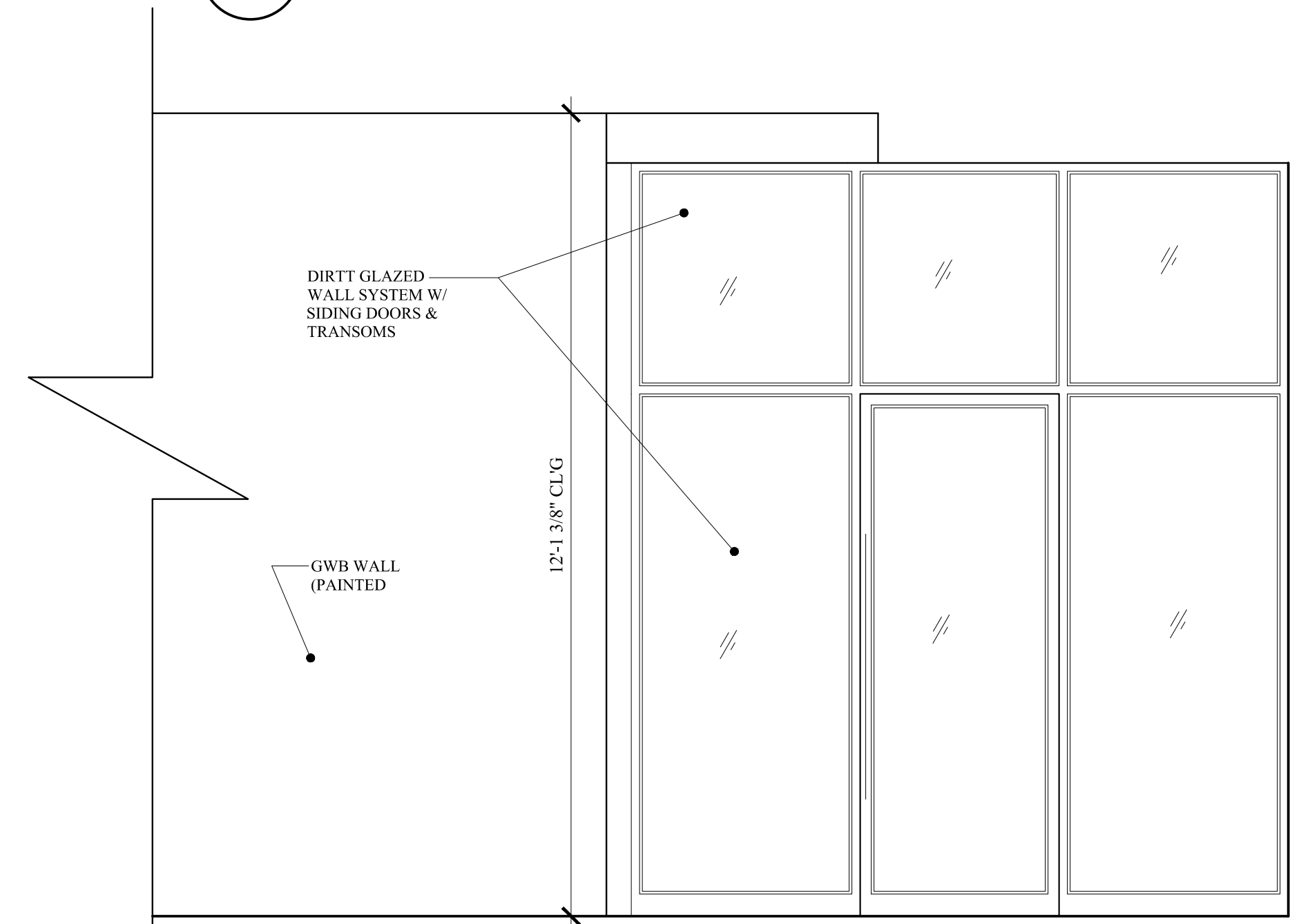
D INTERIOR ELEVATION
A-1.1 SCALE: 1/2"=1'-0"



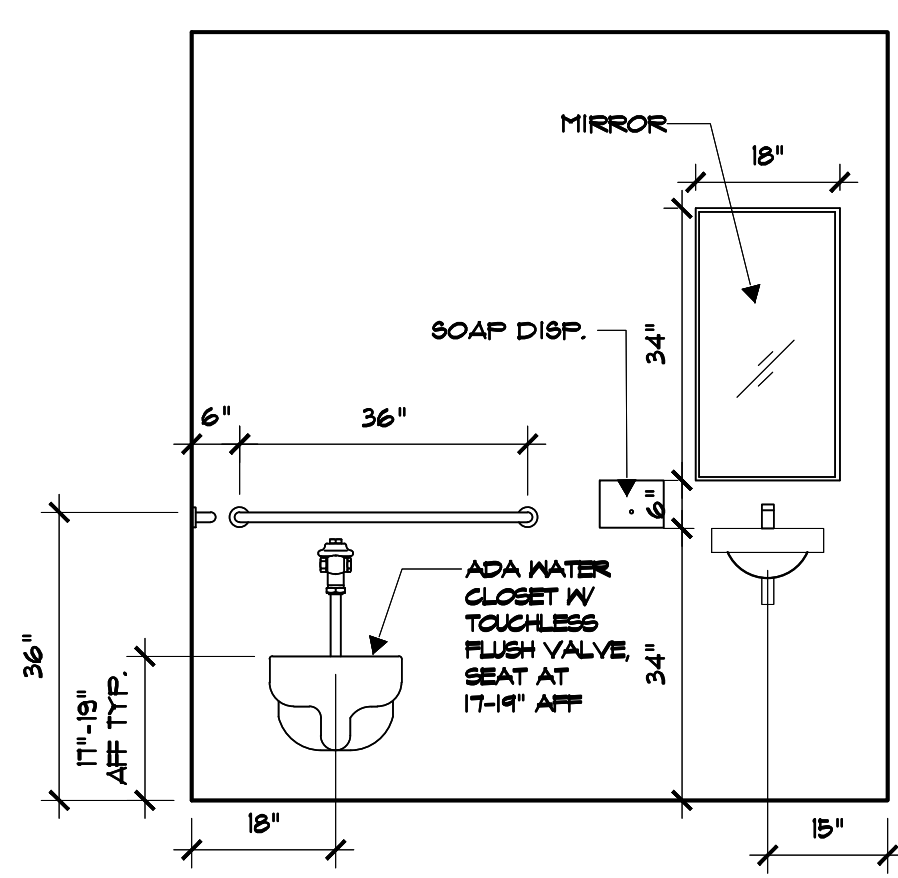
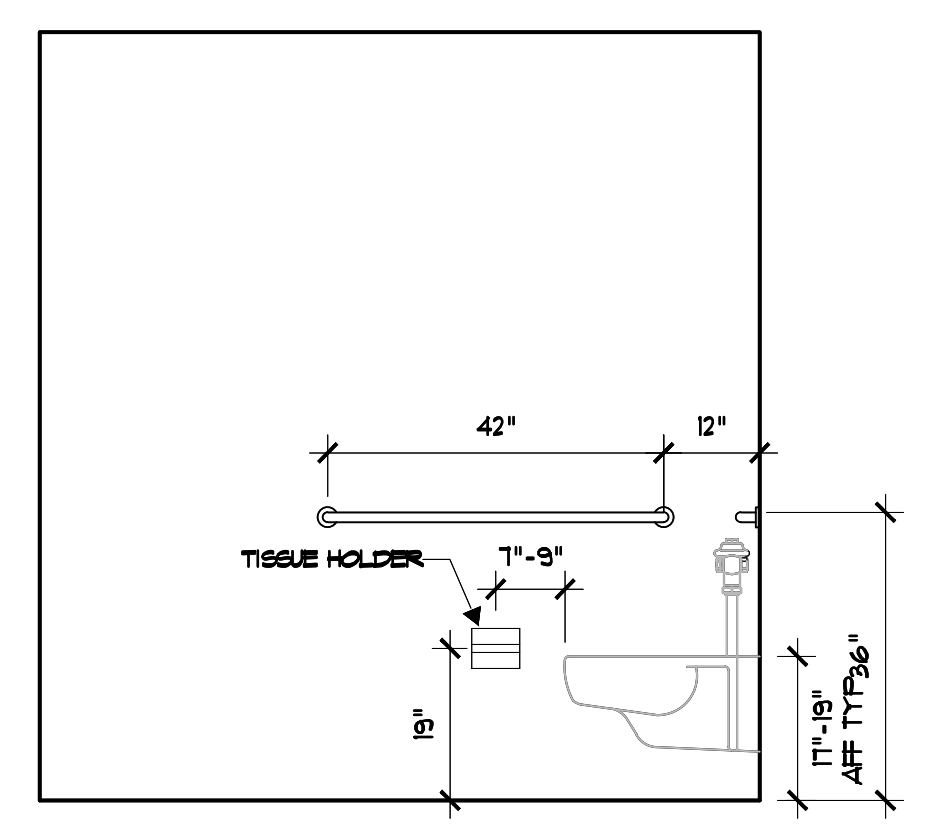
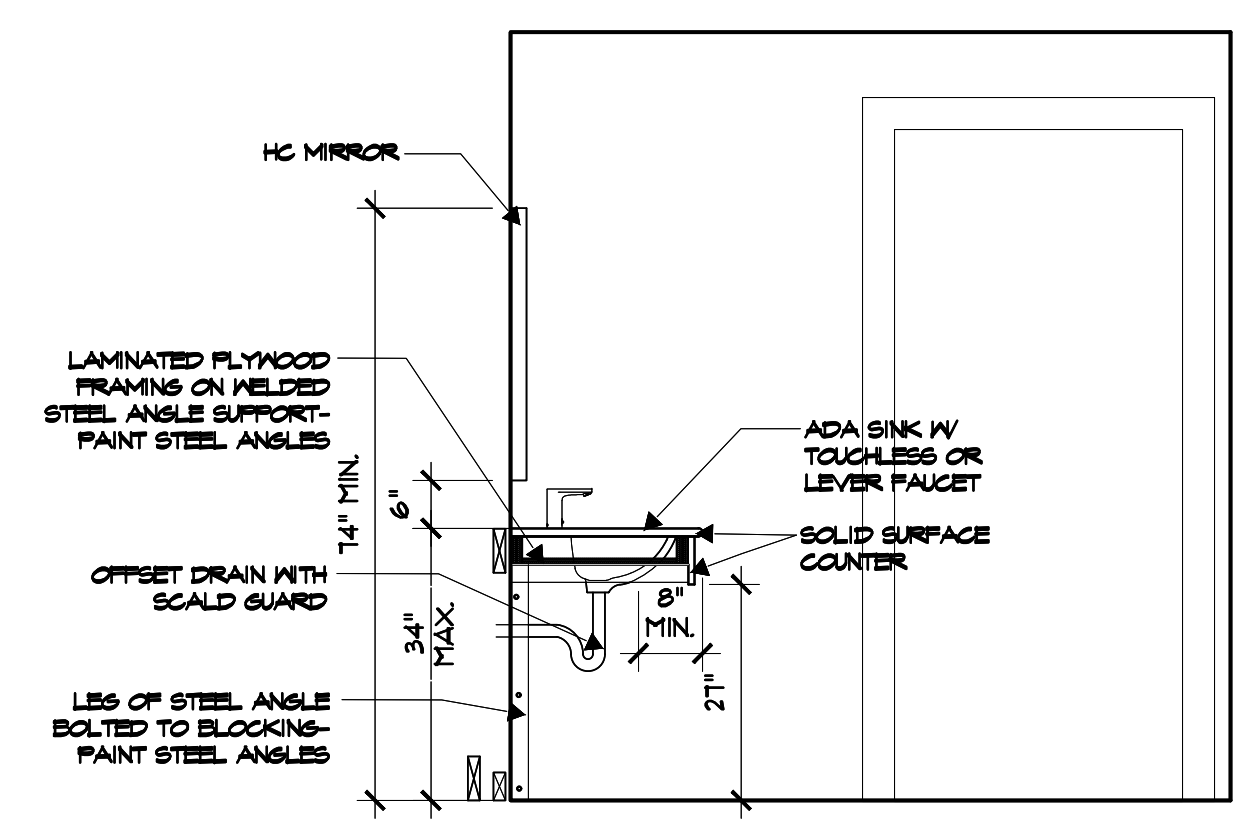
B INTERIOR ELEVATION
A-1.1 SCALE: 1/2"=1'-0"



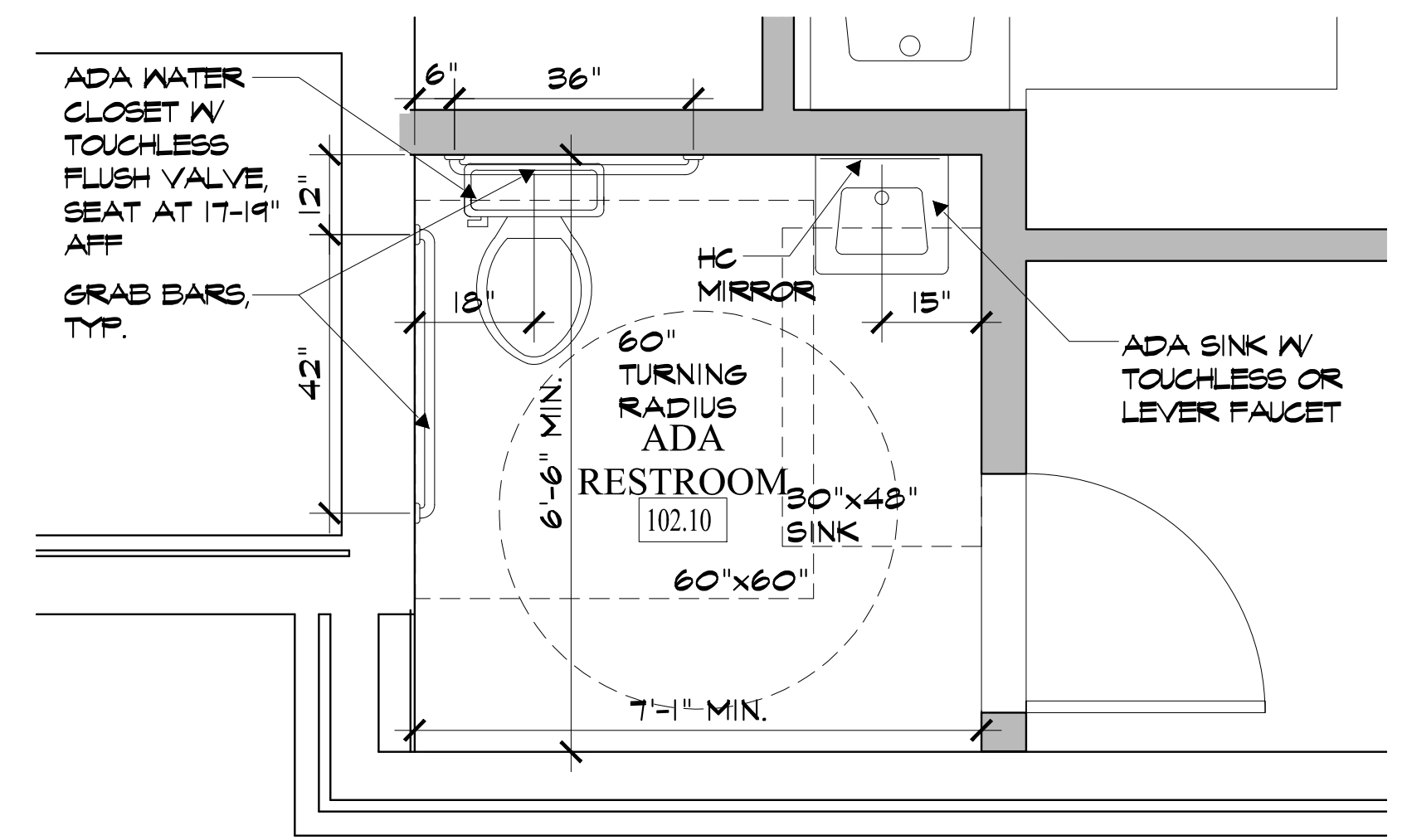
C INTERIOR ELEVATION
A-1.1 SCALE: 1/2"=1'-0"



A INTERIOR ELEVATION
A-1.1 SCALE: 1/2"=1'-0"



ADA RESTROOM INT. ELEVATIONS
SCALE: 1/2"=1'-0"



ADA RESTROOM ENLARGED PLAN, TYP.
SCALE: 1/2"=1'-0"

PERMIT SET: DECEMBER 27, 2017