

**MARK  
MUELLER  
ARCHITECTS**  
A.I.A.  
100 Commercial Street  
Suite 205  
Portland, Maine 04101  
Phone: 207.774.9057  
Email:  
rfi@muellerarchitects.com

© COPYRIGHT 2017  
MARK MUELLER ARCHITECTS



TENANT FIT-UP FOR:  
62 INDIA STREET  
PORTLAND, MAINE 04101

REFLECTED CEILING PLAN  
& RAISED FLOOR DETAIL

REVISIONS  
DATE  
OCT. 2017  
PROJECT  
INDIA STREET  
DRAWN BY  
MRP  
CHECKED BY  
MAM

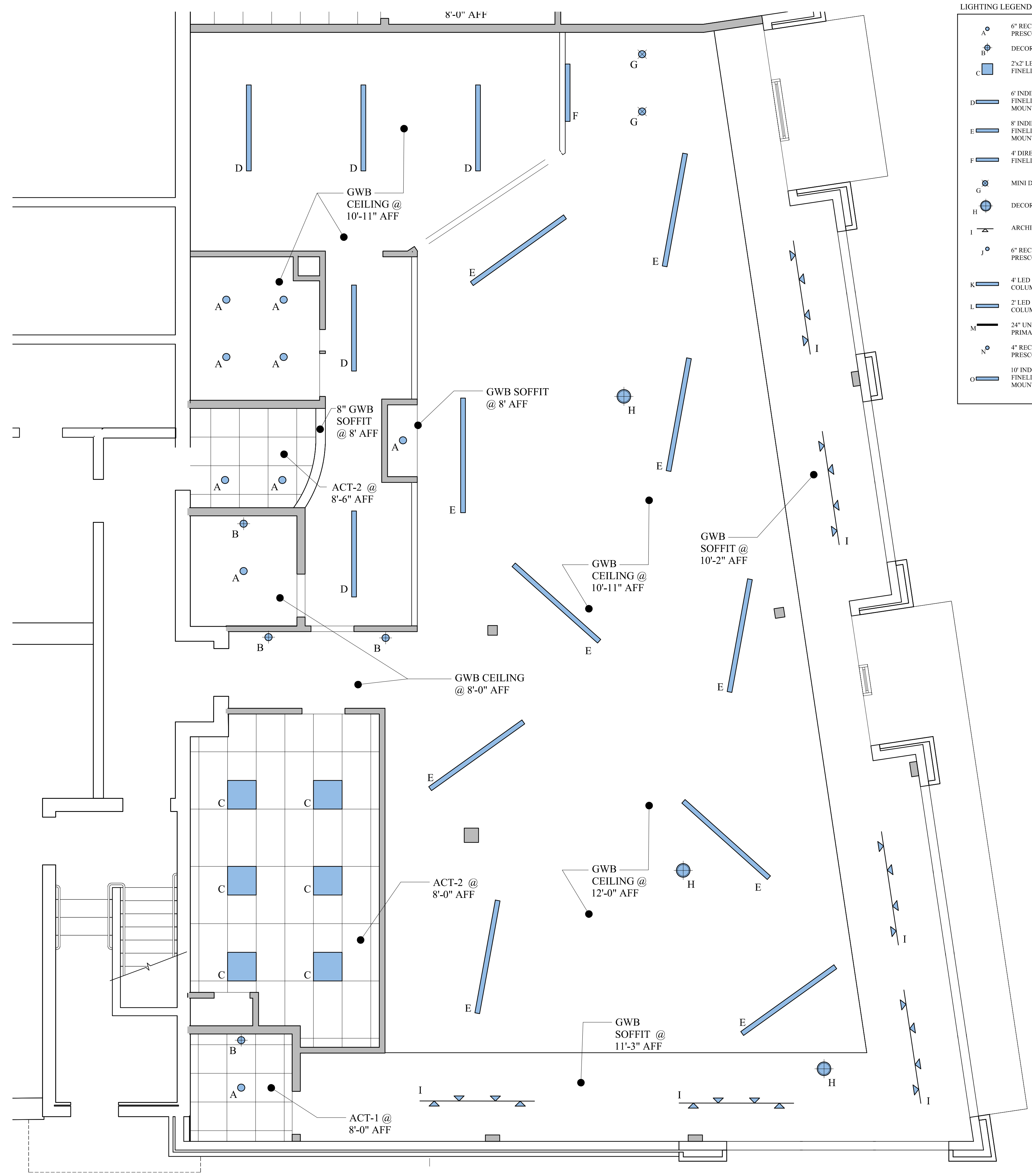
**A-1.2**

**LIGHTING LEGEND**

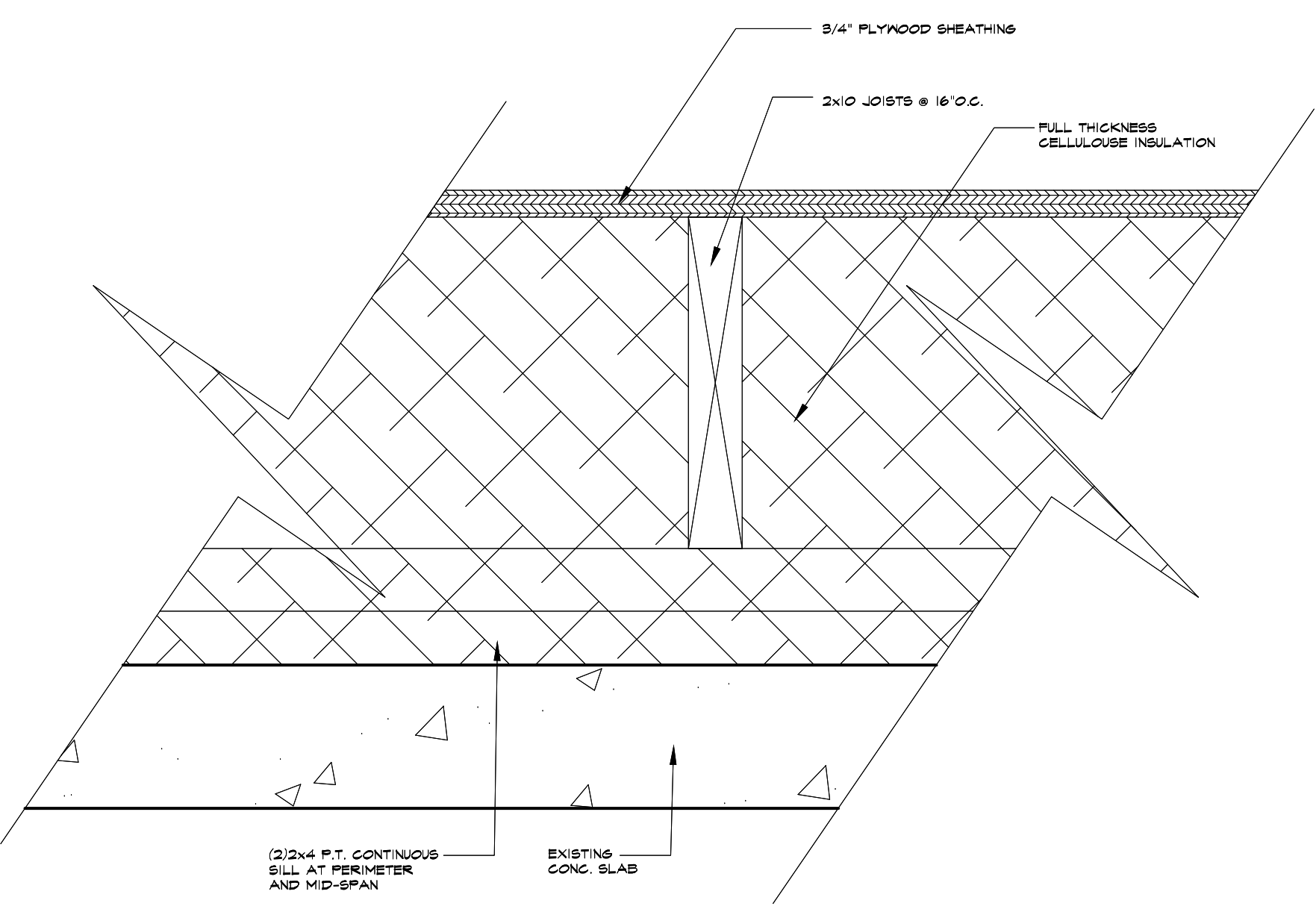
- A 6" RECESSED LED DOWNLIGHT, CLEAR REFLECTOR W/ WHITE TRIM  
PRESCOLITE: LF4LEDG4-6LFLEDG4-35K-WT
- B DECORATIVE WALL SCONSE
- C 2x2 LED RECESSED GRID FIXTURE, ANGLED NARROW RAIL  
FINELITE: HPR-LED-ANR-2X2-DCO-SO-3500K-120V-SC-C1
- D 6" INDIRECT/ DIRECT 2" APERTURE LED FIXTURE CEILING SUSPENDED  
FINELITE: HP-2-ID-6-S-S-835-TG-F-96LG-120V-SC-FA-FE-C4  
MOUNT 9" AFF TO BOT. OF FIXTURE
- E 8" INDIRECT/ DIRECT 2" APERTURE LED FIXTURE CEILING SUSPENDED  
FINELITE: HP-2-ID-8-S-S-835-TG-F-96LG-120V-SC-FA-FE-C4  
MOUNT 10" AFF TO BOT. OF FIXTURE
- F 4" DIRECT 2" APERTURE LED FIXTURE WALL MOUNTED  
FINELITE: HP-2-WMD-4-S-835-F-120V-SC
- G MINI DECORATIVE ARCHITECTURAL SUSPENDED DOWNLIGHT, 7" AFF
- H DECORATIVE ARCHITECTURAL SUSPENDED DOWNLIGHT, 8" AFF
- I ARCHITECTURAL TRACK LIGHTING
- J 6" RECESSED LED DOWNLIGHT, WET LOCATION W/ WHITE TRIM  
PRESCOLITE: LC6LED-120-6LCLED5-40K-S-WH-WT
- K 4" LED LENSED STRIPLIGHT  
COLUMBIA LIGHTING: LCL-4-40-LW-E-U
- L 2" LED LENSED STRIPLIGHT  
COLUMBIA LIGHTING: LCL-2-40-LW-E-U
- M 24" UNDERCABINET LIGHT W/ ROCKER SWITCH 'NOVO TASK'  
PRIMA LIGHTING: 55T24-WH-30K
- N 4" RECESSED LED DOWNLIGHT, CLEAR REFLECTOR W/ WHITE TRIM  
PRESCOLITE: LF4SL-DM1-347V-LV-4LFSL-11L-35K-SP-WH-WT
- O 10" INDIRECT/ DIRECT 2" APERTURE LED FIXTURE CEILING SUSPENDED  
FINELITE: HP-2-ID-10-S-S-835-TG-F-96LG-120V-SC-FA-FE-C4 - DIMMABLE  
MOUNT 8" AFF TO BOT. OF FIXTURE

**CEILING LEGEND**

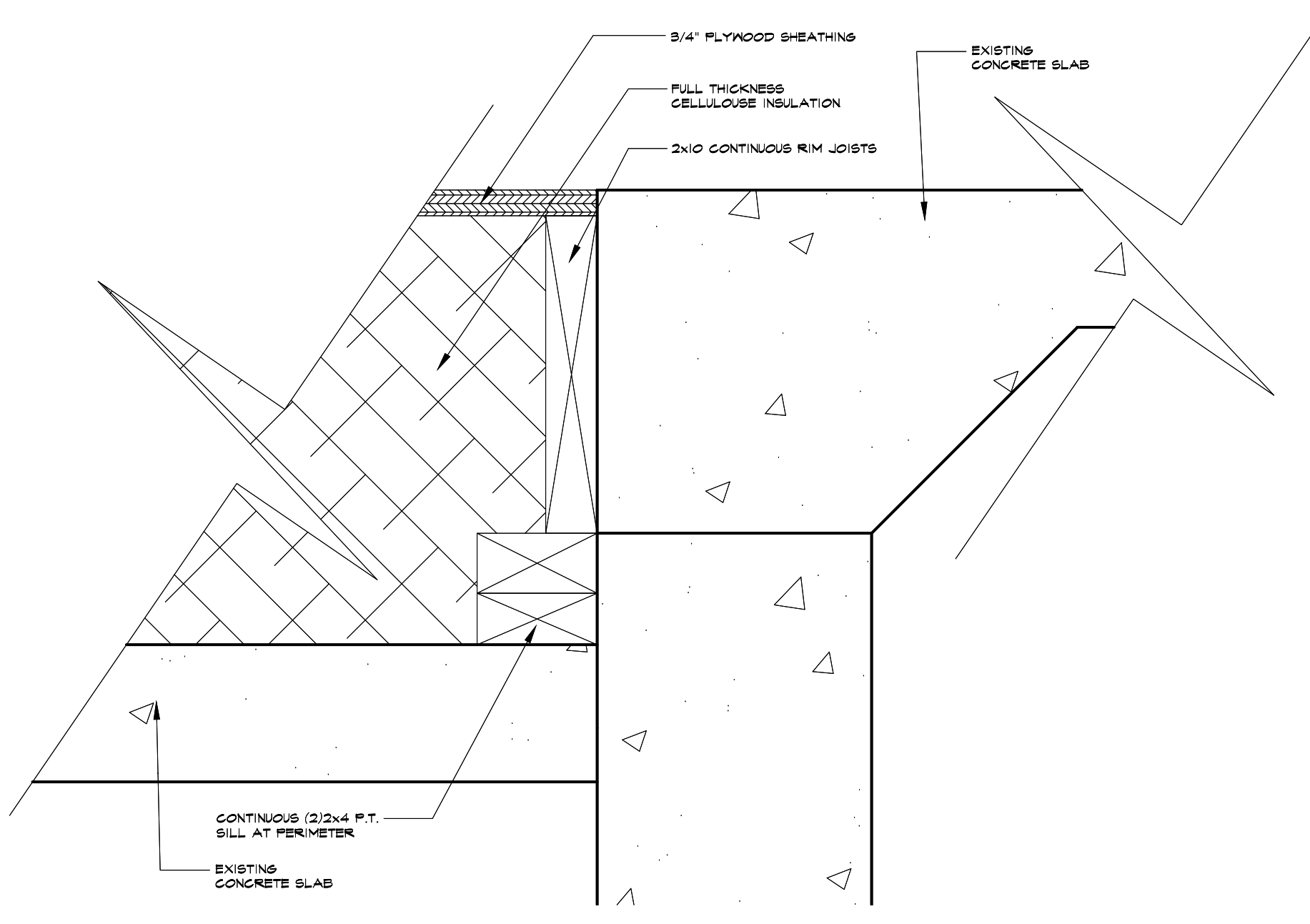
- ACT-1 ARMSTRONG DUNE LAY IN 15/16" SUPRAFINE XL 24"x24" 15/16" GRID WHITE
- ACT-2 ARMSTRONG DUNE TEGULAR 15/16" SUPRAFINE XL 24"x48" 15/16" GRID WHITE
- ACT-2 ARMSTRONG CANYON BEVELED 9/16" SUPRAFINE XL 24"x24" 9/16" GRID WHITE
- GWB PAINTED GWB CEILING



**PROPOSED REFLECTED CEILING PLAN**  
SCALE: 1/4"=1'-0"



**2 TYPICAL RAISED FLOOR DETAIL**  
SCALE: 3/8"=1'-0"



**1 RAISED FLOOR DETAIL @ PERIMETER**  
SCALE: 3/8"=1'-0"

**PERMIT SET: DECEMBER 27, 2017**