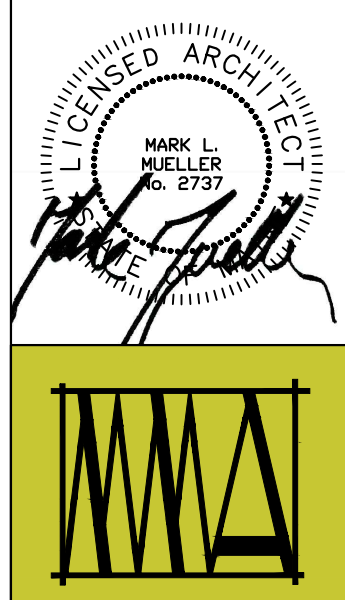


WALL LEGEND

STUD WALL	
CMU WALL	
BRICK WALL	
FIRE RATED WALL	
1/2 HOUR	
1 HOUR	
2 HOUR	



MARK MUELLER ARCHITECTS
A.I.A.
100 Commercial Street
Suite 205
Portland, Maine 04101
Phone: 207.774.9057
Email: rfi@muellerarchitects.com

© COPYRIGHT 2016
MARK MUELLER ARCHITECTS

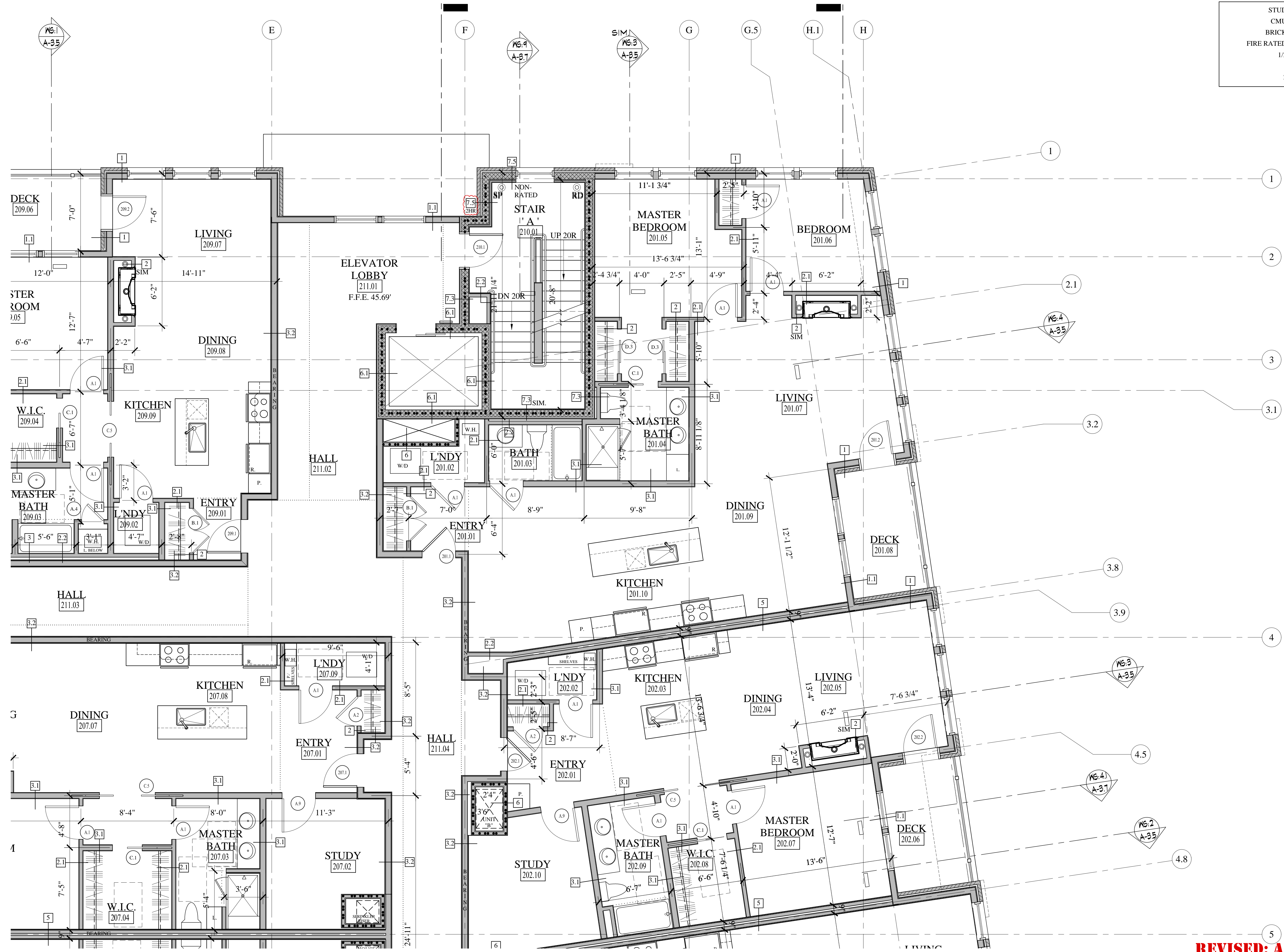
62

INDIA

INDIA STREET NEIGHBORHOOD
PORTLAND, MAINE

PARTIAL SECOND FLOOR PLAN 'A'

DATE: JUNE 2016
PROJECT: INDIA STREET
DRAWN BY: ...
CHECK BY: MAM



PARTIAL SECOND FLOOR PLAN 'A'
SCALE: 1/4"=1'-0"

REVISED: APRIL 04, 2017
CONSTRUCTION SET
NOVEMBER 18, 2016

A-1.10