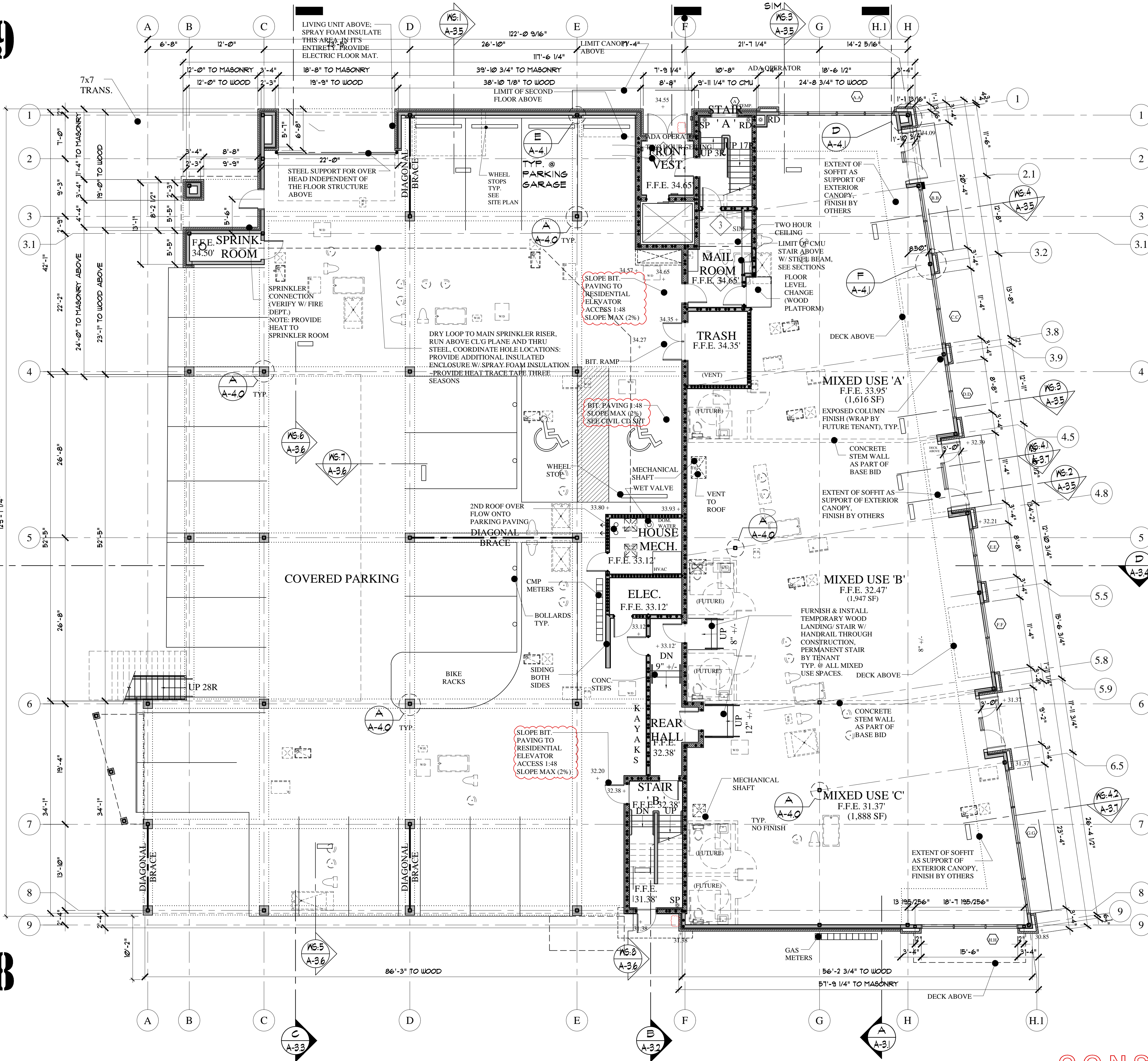


A-1.9



A-1.8

FIRST FLOOR PLAN
SCALE: 1/8"=1'-0"

WALL LEGEND

STUD WALL	[Symbol]
CMU WALL	[Symbol]
BRICK WALL	[Symbol]
FIRE RATED WALL	[Symbol]
1/2 HOUR	[Symbol]
1 HOUR	[Symbol]
2 HOUR	[Symbol]

A-1.6

1ST FLOOR NOTES:
MIXED USE COMMERCIAL SPACES SHALL BE UNFINISHED AS PART OF THE BASIC CONTRACT.

WORK AT COMMERCIAL SPACES TO OBTAIN OCCUPANCY PERMITS WILL INCLUDE: SPRINKLER SYSTEMS, TEMP. HEAT, TEMP. LIGHTS, LIFE SAFETY SYSTEM, SOILS AND RADON VENT SYSTEMS, STUBS TO MAIN SEWER PIPING AND ALL ROUGH-IN FOR FUTURE UTILITIES AND PROPANE GAS. EXPOSED COLUMNS AND SUPPORTING CONCRETE STEM WALLS WITHIN THE SPACE WITHIN EXTERIOR WALLS WILL REQUIRE FIRE-SPRAY PROTECTION AS PART OF THE BASIC CONTRACT. FIRE RATED EXTERIOR WALLS & FIRE RATED FLOOR/CEILING ASSEMBLY SHALL BE COMPLETED IN ITS ENTIRETY. FIRE RATED WALL ASSEMBLY BETWEEN COMMERCIAL SPACE & PARKING AREA SHALL BE COMPLETED IN ITS ENTIRETY.

GENERAL NOTE: PROVIDE A COMPLETE SPRINKLER DESIGN FOR STRUCTURAL MECHANICAL COORDINATION PRIOR TO STEEL SHOP DRAWINGS.

UNIT MATRIX

ROOM NAME	HEATED AREA	TYPE
201	1,385 SF	2 BEDROOM
202	1,055 SF	1 BEDROOM
203	1,144 SF	1 BEDROOM
204	1,955 SF	3 BEDROOM
205	1,829 SF	3 BEDROOM
206	1,167 SF	2 BEDROOM
207	1,166 SF	1 BEDROOM
208	1,238 SF	2 BEDROOM
209	864 SF	1 BEDROOM
301	1,385 SF	2 BEDROOM
302	1,055 SF	1 BEDROOM
303	1,144 SF	1 BEDROOM
304	1,871 SF	3 BEDROOM
305	677 SF	1 BEDROOM
306	1,831 SF	2 BEDROOM
307	1,106 SF	2 BEDROOM
308	1,105 SF	1 BEDROOM
309	1,328 SF	2 BEDROOM
310	864 SF	1 BEDROOM
401	1,385 SF	2 BEDROOM
402	1,055 SF	1 BEDROOM
403	1,144 SF	1 BEDROOM
404	1,730 SF	3 BEDROOM
405	677 SF	1 BEDROOM
406	1,768 SF	2 BEDROOM
407	1,106 SF	2 BEDROOM
408	1,105 SF	1 BEDROOM
409	1,328 SF	2 BEDROOM
410	864 SF	1 BEDROOM
MIXED USE 'A'	1,616 SF	MERCANTILE
MIXED USE 'B'	1,947 SF	MERCANTILE
MIXED USE 'C'	1,888 SF	MERCANTILE
RESIDENT/STORAGE	677 SF	STORAGE

AREA CALCULATION:

COMMERCIAL	6,648 sqft
RESIDENTIAL	42,801 sqft
TOTAL NET	49,449 sqft
PARKING	9,899 sq ft
DECKS	4,381 sq ft
INCLUDES ROOF DECKS	
LIVING AREAS:	
SECOND FLOOR	14,529 sq ft
THIRD FLOOR	14,454 sq ft
FOURTH FLOOR	14,270 sq ft

A-1.7

REVISÉ: MARCH 21, 2017
CONSTRUCTION SET
NOVEMBER 18, 2016

MARK L. MUELLER ARCHITECTS A.I.A.
100 Commercial Street
Suite 205
Portland, Maine 04101
Phone: 207.774.9057
Email: rfm@muellerarchitects.com

62

INDIA STREET

INDIA STREET NEIGHBORHOOD
PORTLAND, MAINE

FIRST FLOOR PLAN

A-1.1