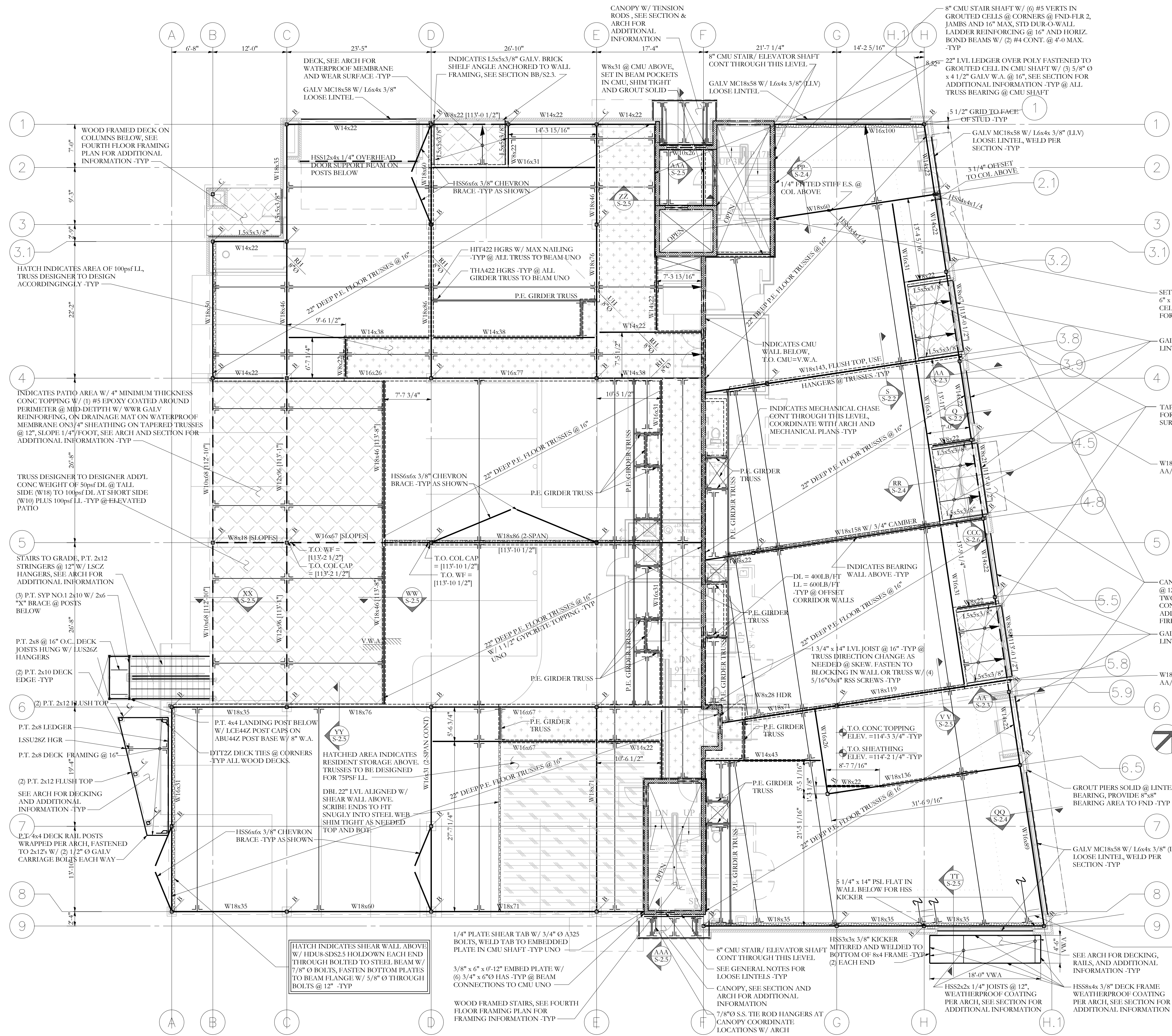


COPYRIGHT: Reuse or reproduction of the contents of this document is not permitted without written permission of Structural Integrity Consulting Engineers, Inc.



FRAMING PLAN SYMBOLS KEY	
□	WOOD POST
○	STEEL COLUMN
(X)	NUMBER OF WOOD STUDS IN POST BELOW
A	COLUMN ABOVE THIS LEVEL
B	COLUMN BELOW THIS LEVEL
C	COLUMN CONTINUOUS THROUGH THIS LEVEL
—	JOIST BEARING
—	CONTINUOUS JOIST WITH INTERMEDIATE BEARING
—	FLUSH FRAMED JOIST BEARING WITH HANGER
—	WOOD STUD BEARING WALL BELOW
—	SHEAR WALL
—	NUMBER OF TRIM STUDS UNDER HEADER
—	NUMBER OF KING STUDS ADJACENT TO HEADER

NOTE:
ALL EXPOSED BACK TO BACK STEEL LINTELS TO BE SEAM WELDED AND GROUND SMOOTH AT BOTTOM SEAM PRIOR TO COLOR GALV.

NOTE:
ASSUME ALL STEEL GIRDERS TO HAVE (3) 6" +/- Ø UNREINFORCED TORCH CUT HOLES IN WEB FOR MECHANICAL ETC. COORDINATE W/ ARCH AND OTHERS PRIOR TO SHOP DRAWINGS -TYP. ADD'L HOLES INDICATED ON PLAN AS "UH" & "UR" INDICATED MEANING UNREINFORCED HOLES AND REINFORCED HOLES. ASSUME ALL REINFORCED OPENINGS WILL HAVE 1/2"x24" LONG STIFFENERS TOP AND BOT EA. SIDE WITH 3/8" VERTICAL STIFFENERS BOTH SIDES.

NOTE:
CANOPY FRAMING, CANTILEVERED RIPPED PSL FRAMING @ 12" O.C. EXTENDING OUT FROM BUILDING HUNG FROM TWO POINTS INSIDE OFF FRAMING ABOVE VERTS CONCEALED WITHIN SOFFIT SPACE, SEE SECTIONS FOR ADDITIONAL FRAMING INFORMATION. SEE ARCH FOR FIREPROOFING AND ADDITIONAL INFORMATION -TYP

NOTE:
CANOPY FRAMING, CANTILEVERED RIPPED PSL FRAMING @ 12" O.C. EXTENDING OUT FROM BUILDING HUNG FROM TWO POINTS INSIDE OFF FRAMING ABOVE VERTS CONCEALED WITHIN SOFFIT SPACE, SEE SECTIONS FOR ADDITIONAL FRAMING INFORMATION. SEE ARCH FOR FIREPROOFING AND ADDITIONAL INFORMATION -TYP

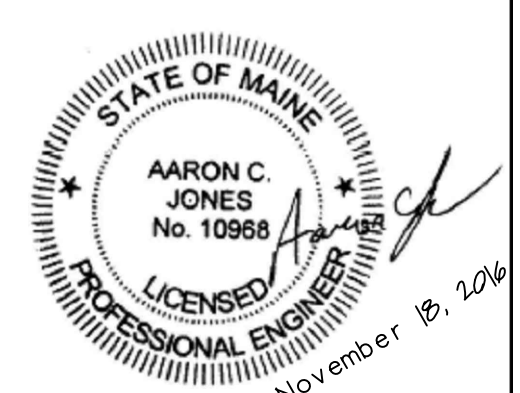
NOTE:
CANOPY FRAMING, CANTILEVERED RIPPED PSL FRAMING @ 12" O.C. EXTENDING OUT FROM BUILDING HUNG FROM TWO POINTS INSIDE OFF FRAMING ABOVE VERTS CONCEALED WITHIN SOFFIT SPACE, SEE SECTIONS FOR ADDITIONAL FRAMING INFORMATION. SEE ARCH FOR FIREPROOFING AND ADDITIONAL INFORMATION -TYP

NOTE:
CANOPY FRAMING, CANTILEVERED RIPPED PSL FRAMING @ 12" O.C. EXTENDING OUT FROM BUILDING HUNG FROM TWO POINTS INSIDE OFF FRAMING ABOVE VERTS CONCEALED WITHIN SOFFIT SPACE, SEE SECTIONS FOR ADDITIONAL FRAMING INFORMATION. SEE ARCH FOR FIREPROOFING AND ADDITIONAL INFORMATION -TYP

NOTE:
CANOPY FRAMING, CANTILEVERED RIPPED PSL FRAMING @ 12" O.C. EXTENDING OUT FROM BUILDING HUNG FROM TWO POINTS INSIDE OFF FRAMING ABOVE VERTS CONCEALED WITHIN SOFFIT SPACE, SEE SECTIONS FOR ADDITIONAL FRAMING INFORMATION. SEE ARCH FOR FIREPROOFING AND ADDITIONAL INFORMATION -TYP

SECOND FLOOR FRAMING PLAN

- SCALE 1/8"=1'-0"
- SEE SHEET S-1.0 FOR GENERAL STRUCTURAL NOTES
 - ALL WOOD COLUMNS IN 2x6 WALLS SHALL BE 3-2x6 AND IN 2x4 WALLS SHALL BE 3-2x4 UNLESS NOTED OTHERWISE ON PLANS
 - ALL BEAMS ARE FLUSH UNO
 - ALL HEADERS IN INTERIOR 2x BEARING WALLS ARE 3-2x6 UNO
 - ALL FLOOR JOIST TO BE 22" DEEP TOP CHORD BEARING P.E. FLOOR TRUSSES @ 16" -TYP UNO
 - FLOOR SHEATHING TO BE 3/4" T+G W/ 1/2" GYPCRETE TOPPING, SEE GENERAL NOTES FOR ADDITIONAL INFORMATION -TYP
 - LAYOUT FLOOR TRUSSES TO AVOID PLUMBING PENETRATIONS ETC. -TYP
 - ALL INTERIOR AND EXTERIOR BEARING WALLS TO HAVE DBL LSL TOP AND BOTTOM PLATES -TYP
 - ALL FLOOR TRUSSES SHALL BE DESIGNED FOR THE MANUFACTURER BY A MAINE REGISTERED P.E. SUBMIT LAYOUT PLANS, BRACING REQUIREMENTS, AND CALCULATIONS TO ARCHITECT AND ENGINEER OF RECORD FOR APPROVAL
 - ALL EXTERIOR/ EXPOSED STEEL (INCLUDING LOOSE LINTELS AND BRICK SHELF) TO BE HOT DIPPED COLOR GALVANIZED UNO, SEE ARCH AND GENERAL NOTES FOR ADDITIONAL INFORMATION.
 - ALL GYPCRETE TOPPING TO HAVE "MAXCON MR" OR EQ FIBERGLASS GRID REINFORCING -TYP
 - TOP OF STEEL BEAM ELEV.= 113'-10 1/2", -TYP UNLESS NOTED [XXX-XX]



OWNER
INDIA/ NEWBURY RESIDENCES, LLC.
PROJECT NAME
62 INDIA ST
Portland, Maine

DRAWN BY
JCS

ISSUE DATE
11.18.16

SHEET TITLE
SECOND FLOOR FRAMING PLAN

SHEET SCALE
1/8"=1'-0"

PROJECT NO.
16-0022

77 Oak Street
Portland, ME 04101
P: 207-774-4614
F: 866-793-7835
www.structuralintegrity.com
BUILD WITH CONFIDENCE
© 2016 Structural Integrity Consulting Engineers, Inc.