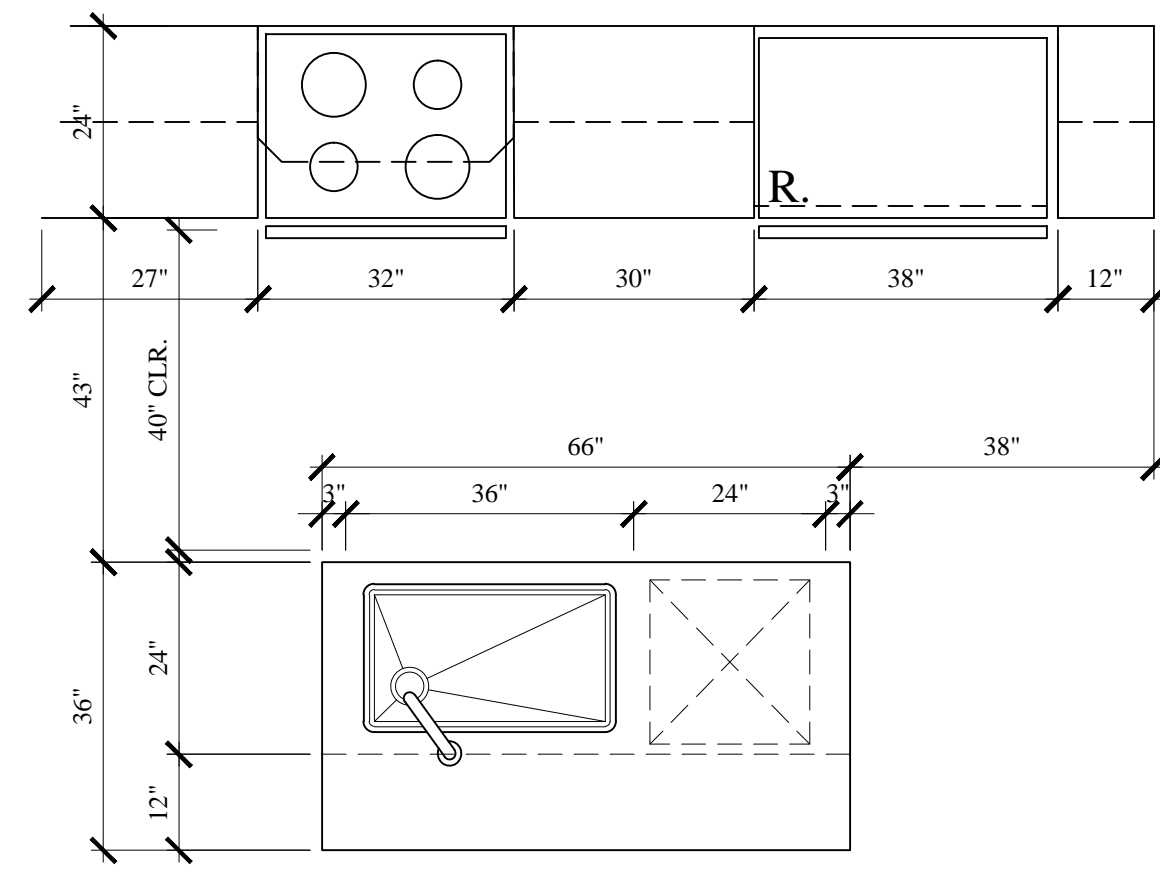


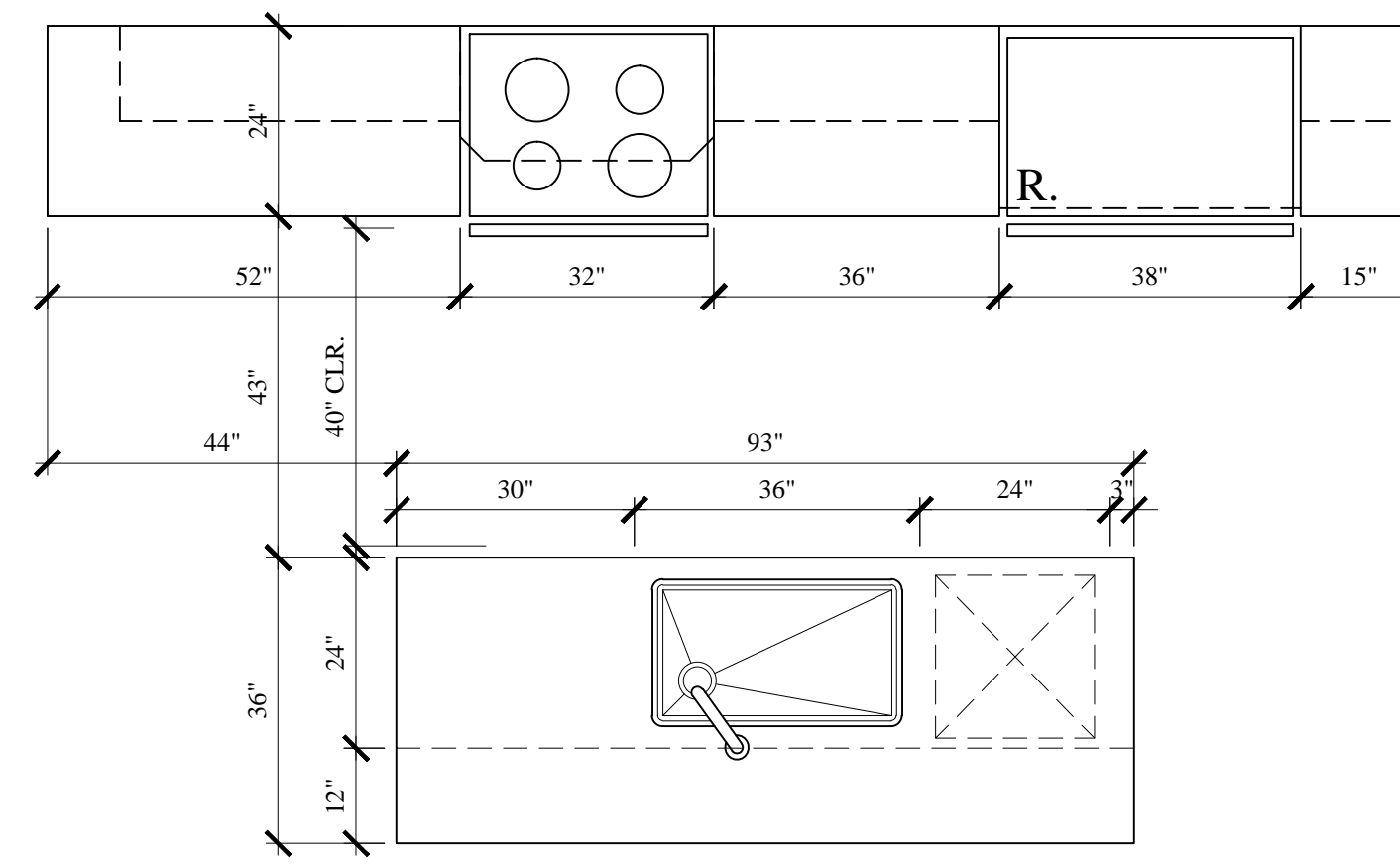
**KITCHEN PLAN "A"**

SCALE: 1/2"=1'-0"  
SEE UNITS 209, 208, 310, 410



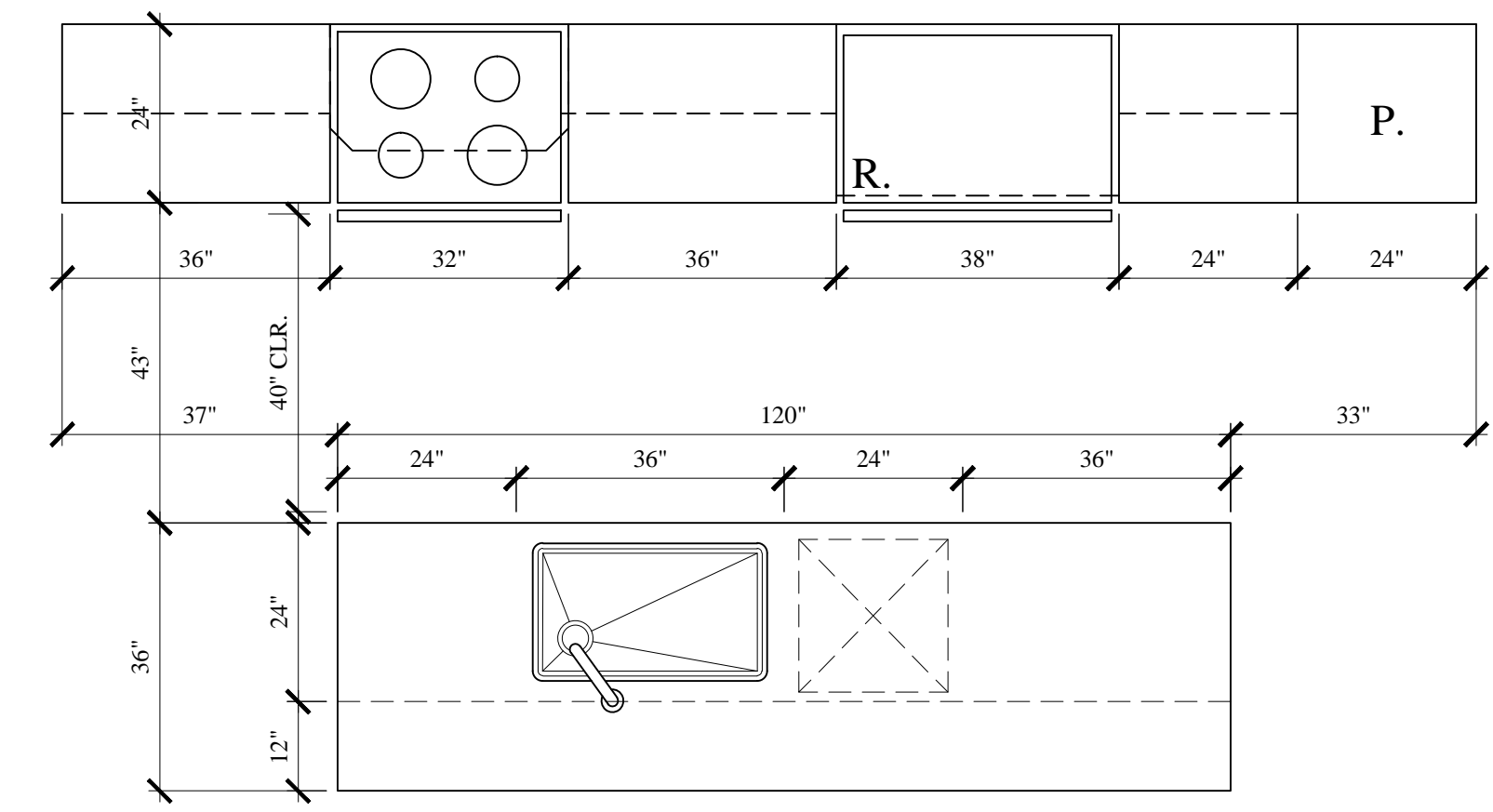
**KITCHEN PLAN "B"**

SCALE: 1/2"=1'-0"  
SEE UNITS 202, 203, 302, 303, 402, 403



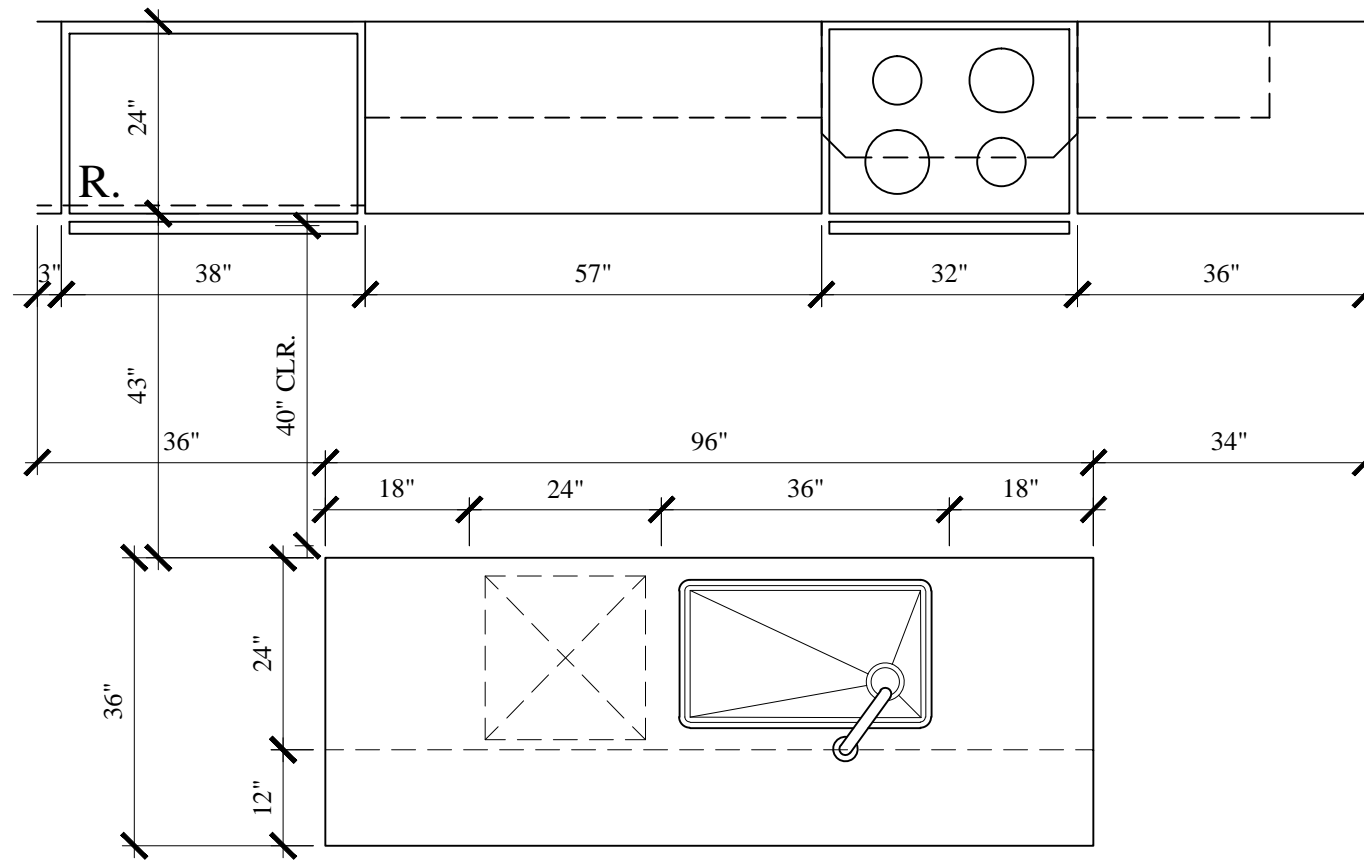
**KITCHEN PLAN "C"**

SCALE: 1/2"=1'-0"  
SEE UNIT 204



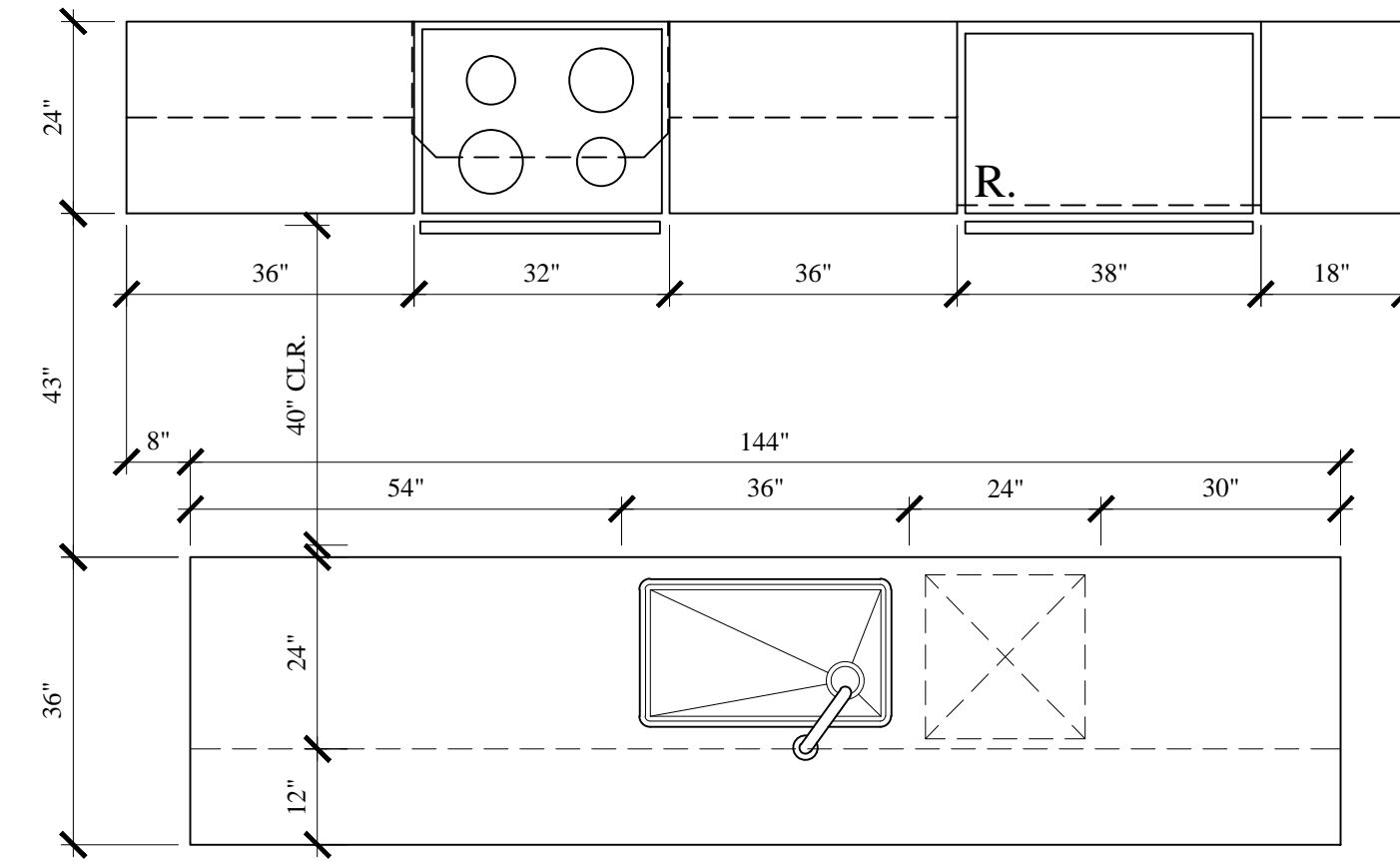
**KITCHEN PLAN "D"**

SCALE: 1/2"=1'-0"  
SEE UNITS 201, 301, 401



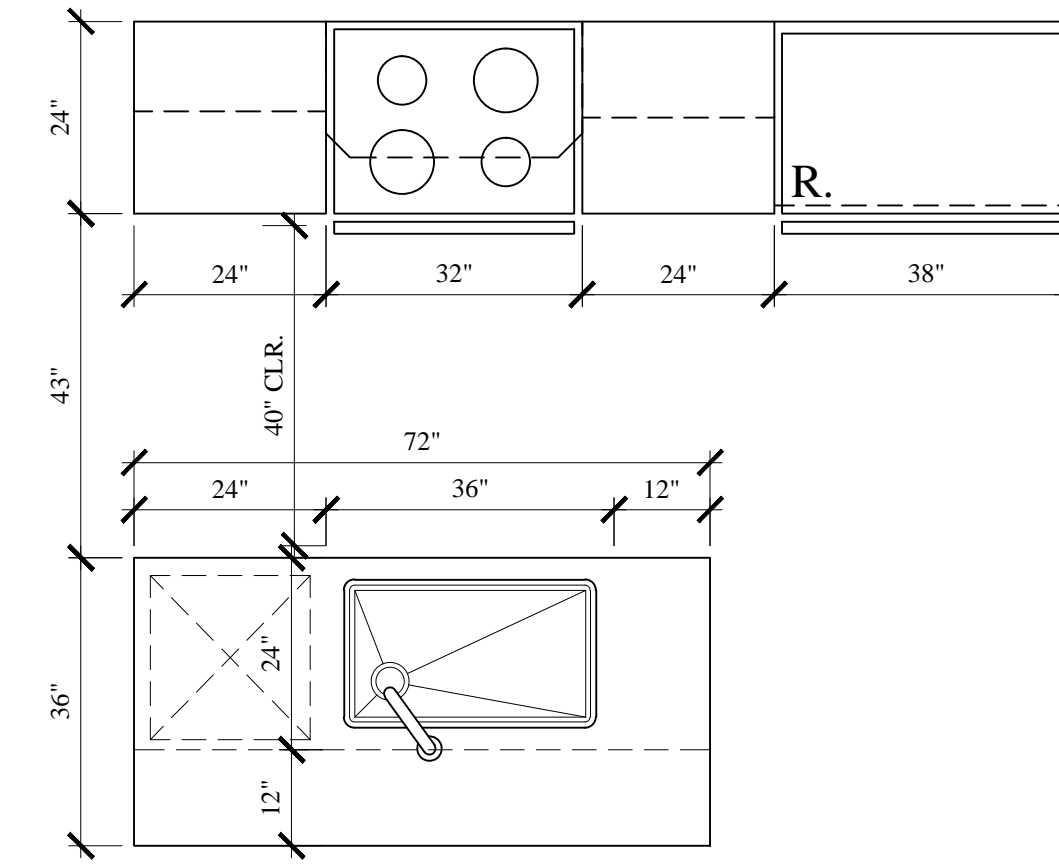
**KITCHEN PLAN "E"**

SCALE: 1/2"=1'-0"  
SEE UNITS 206, 207, 307, 308, 407, 408



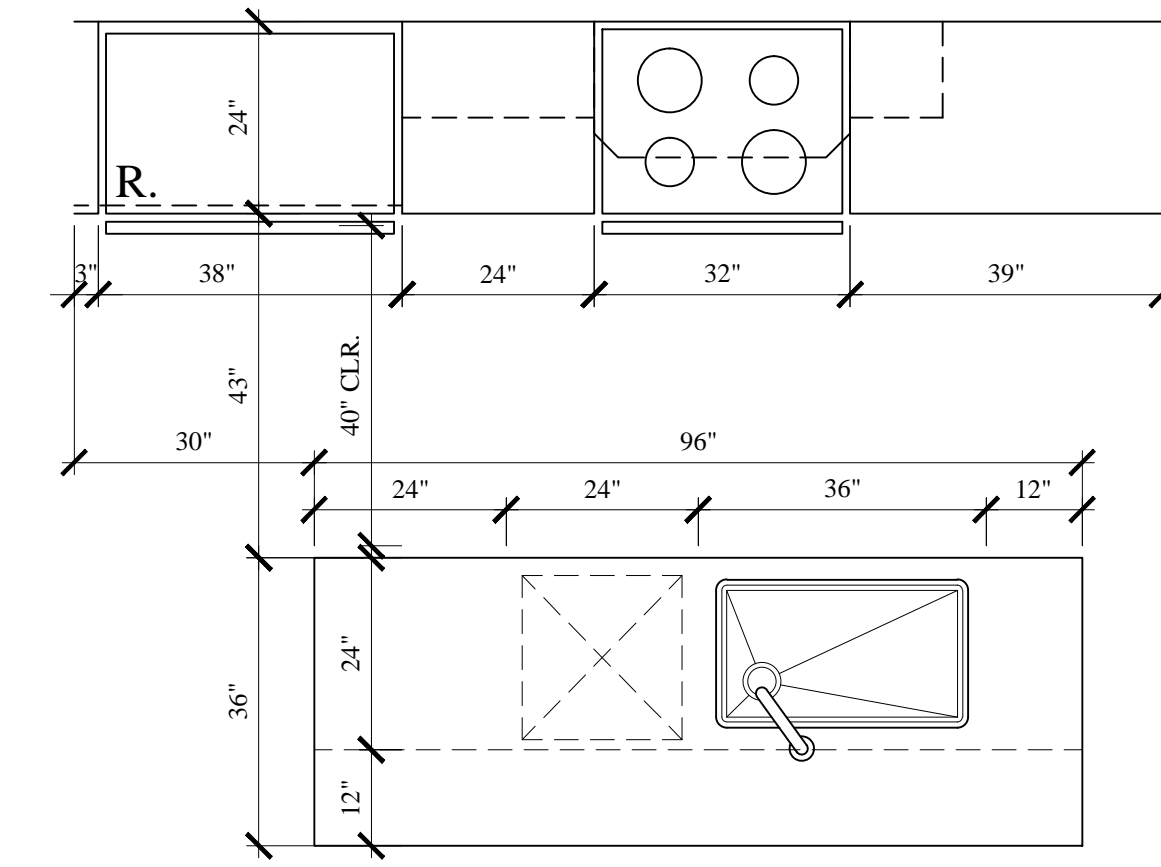
**KITCHEN PLAN "F"**

SCALE: 1/2"=1'-0"  
SEE UNITS 205, 306



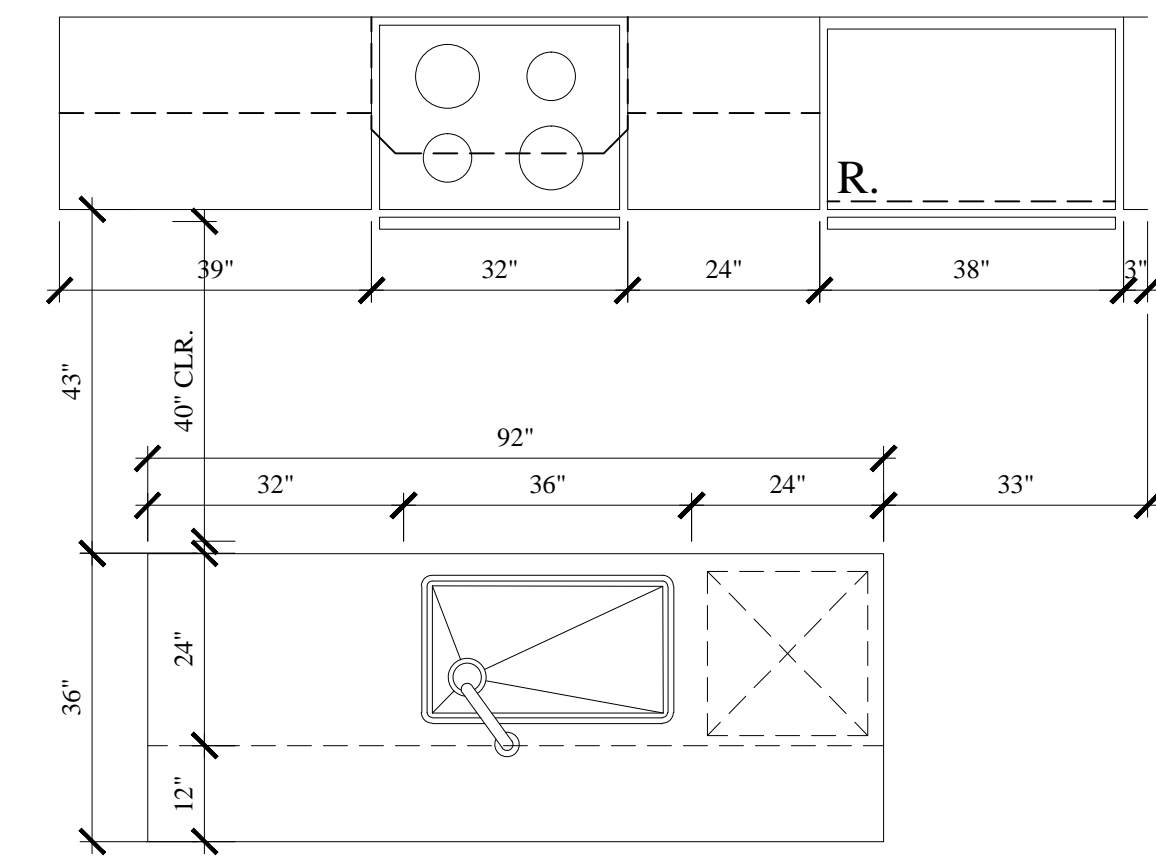
**KITCHEN PLAN "G"**

SCALE: 1/2"=1'-0"  
SEE UNITS 305, 405



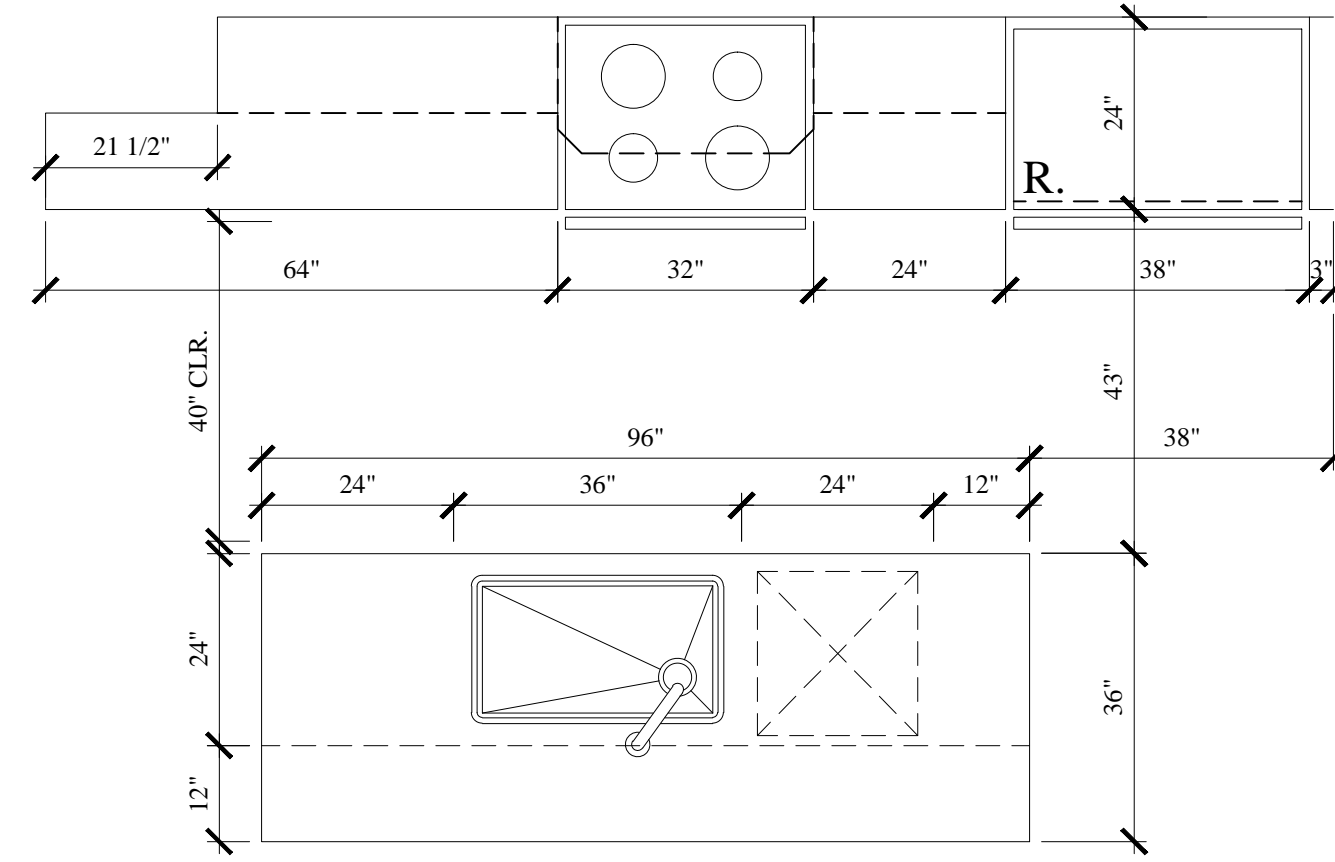
**KITCHEN PLAN "H"**

SCALE: 1/2"=1'-0"  
SEE UNIT 309



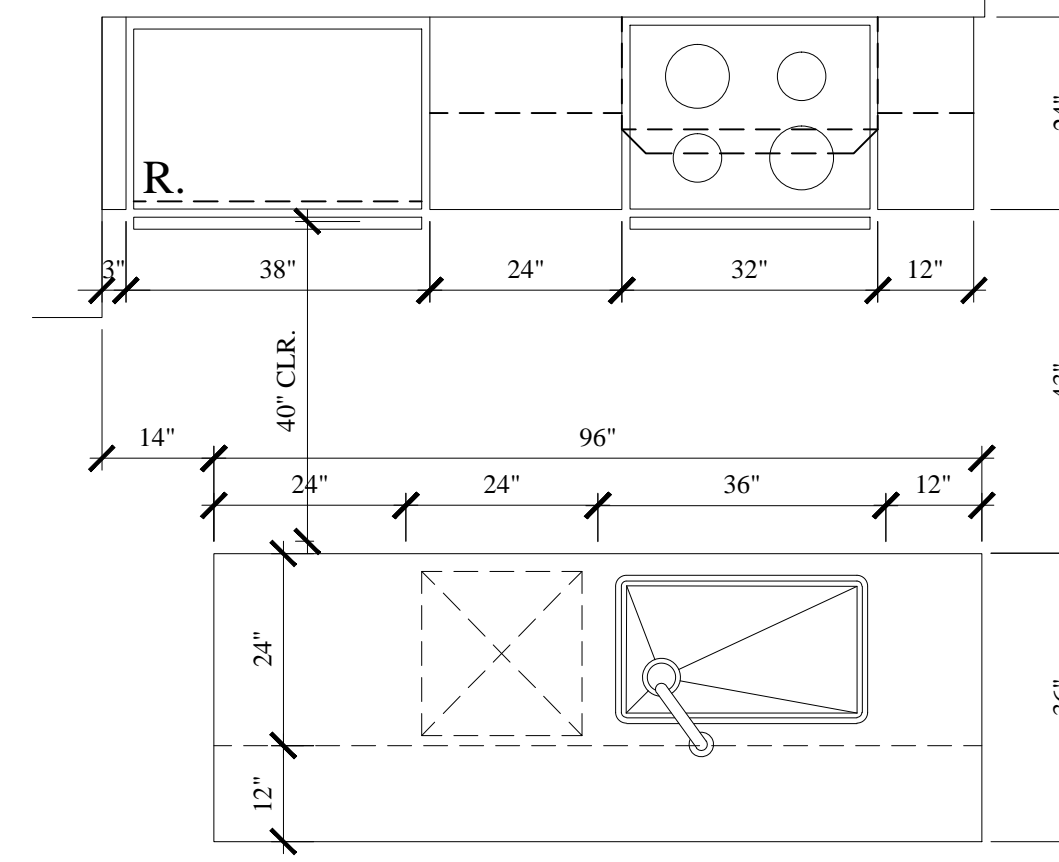
**KITCHEN PLAN "I"**

SCALE: 1/2"=1'-0"  
SEE UNITS 304, 404



**KITCHEN PLAN "J"**

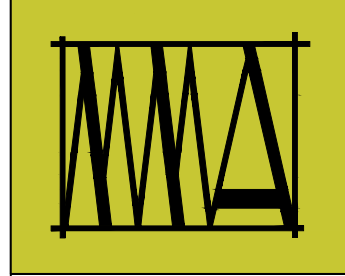
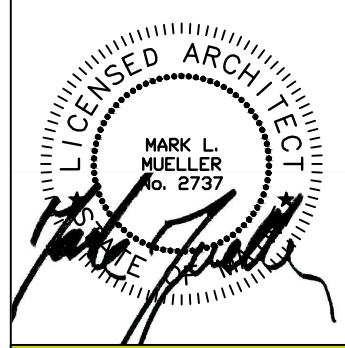
SCALE: 1/2"=1'-0"  
SEE UNIT 406



**KITCHEN PLAN "K"**

SCALE: 1/2"=1'-0"  
SEE UNIT 409

- NOTES:**
- KITCHEN CABINETS SHALL BE AN ARMSTRONG 'ECHELON' CABINET. COUNTERTOPS SHALL BE QUARTZ SOLID SURFACE, IE. CAESAR STONE. HARDWARE: ALLOWANCE BY REGER/ DASCO.
  - ALL UPPER WALL CABINETS SHALL BE 42" HIGH.
  - SEE INTERIORS SHEET 1-3.0 FOR ADDITIONAL KITCHEN APPLIANCE NOTES.



**MARK  
MUELLER  
ARCHITECTS**  
A.I.A.  
100 Commercial Street  
Suite 205  
Portland, Maine 04101  
Phone: 207.774.9057  
Email:  
rfi@muellerarchitects.com

© COPYRIGHT 2016  
MARK MUELLER ARCHITECTS

**62**

**I  
N  
D  
I  
A**

INDIA STREET  
NEIGHBORHOOD  
PORTLAND, MAINE

KITCHEN PLANS	REVISIONS
	DATE
	JUNE 2016
	PROJECT
	INDIA STREET
DRAWN BY	
...	
CHECK BY	
MAM	

**CONSTRUCTION SET**  
NOVEMBER 18, 2016  
**1-5.0**