

**MARK
MUELLER
ARCHITECTS**
A.I.A.
100 Commercial Street
Suite 205
Portland, Maine 04101
Phone: 207.774.9057
Email:
rfi@muellerarchitects.com

© COPYRIGHT 2016
MARK MUELLER ARCHITECTS

62
**I
N
D
I
A**

INDIA STREET
NEIGHBORHOOD
PORTLAND, MAINE

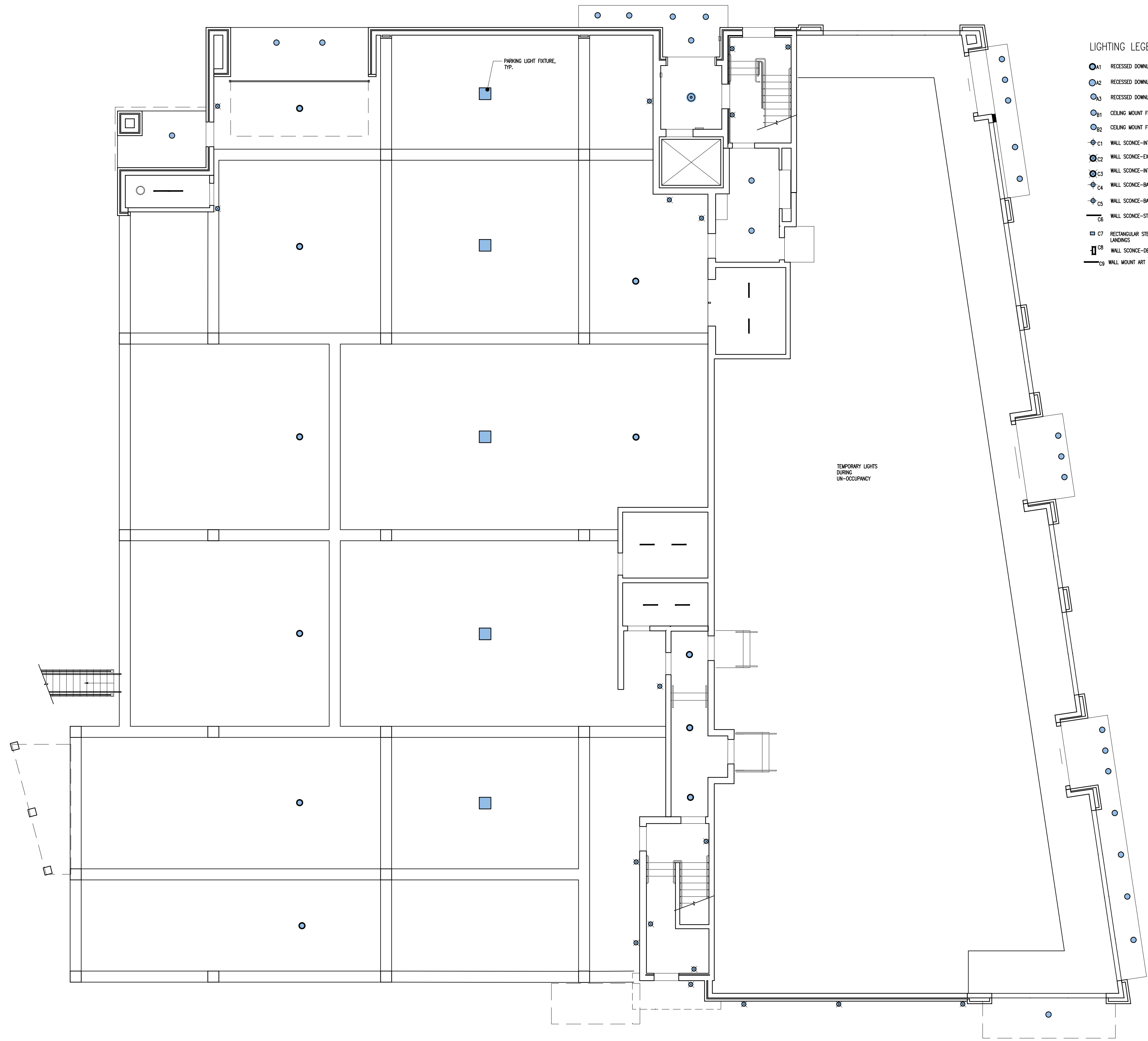
**FIRST FLOOR
REFLECTED CEILING PLAN**

REVISIONS
DATE
JUNE 2016
PROJECT
INDIA STREET
DRAWN BY
...
CHECK BY
M.M.

WALL LEGEND

STUD WALL	
CMU WALL	
BRICK WALL	
FIRE RATED WALL	
1/2 HOUR	
1 HOUR	
2 HOUR	

- LIGHTING LEGEND:**
- A1 RECESSED DOWNLIGHT 7"-EXTERIOR
 - A2 RECESSED DOWNLIGHT 5"-EXTERIOR
 - A3 RECESSED DOWNLIGHT-AT SHOWER STALL
 - B1 CEILING MOUNT FIXTURE-2 LAMPS
 - B2 CEILING MOUNT FIXTURE
 - ⊕ C1 WALL SCONCE-INTERIOR/EXTERIOR STAIRWELLS
 - ⊕ C2 WALL SCONCE-EXTERIOR WALLS
 - ⊕ C3 WALL SCONCE-INTERIOR CORRIDORS
 - ⊕ C4 WALL SCONCE-BATHROOM VANITY (VERTICAL)
 - ⊕ C5 WALL SCONCE-BATHROOM VANITY (HORIZONTAL)
 - ⊕ C6 WALL SCONCE-STRIP LIGHTING UNIT CLOSETS, (HORIZONTAL)
 - ⊕ C7 RECTANGULAR STEP/WALL LIGHT 12" AFF AT CONDO UNIT STAIR LANDINGS
 - ⊕ C8 WALL SCONCE-DECK
 - ⊕ C9 WALL MOUNT ART LIGHTING
 - D1 PENDANT-CHEF'S COUNTER
 - D2 PENDANT-INTERIOR CORRIDORS
POSSION EURO ISLAY PENDANT LIGHTING EXTERIOR,
CLEAR OUTER GLASS, OPAL INNER GLASS, BRUSHED
NICKEL FINISH, 3000K LED.
 - D3 PENDANT-UNIT STAIRWELLS
 - ⊖ E1 CEILING MOUNT FIXTURE-CLOSET
 - ⊖ E2 TRACK LIGHTING
 - ⊖ E3 FAN/LIGHT-BATHROOM
 - ⊖ E4 CEILING MOUNT LED LIGHTING AT STORAGE
 - F1 FUTURE CEILING MOUNTED LIGHTING



FIRST FLOOR REFLECTED CEILING PLAN
SCALE: 1/8"=1'-0"

CONSTRUCTION SET
NOVEMBER 18, 2016
I-2.1