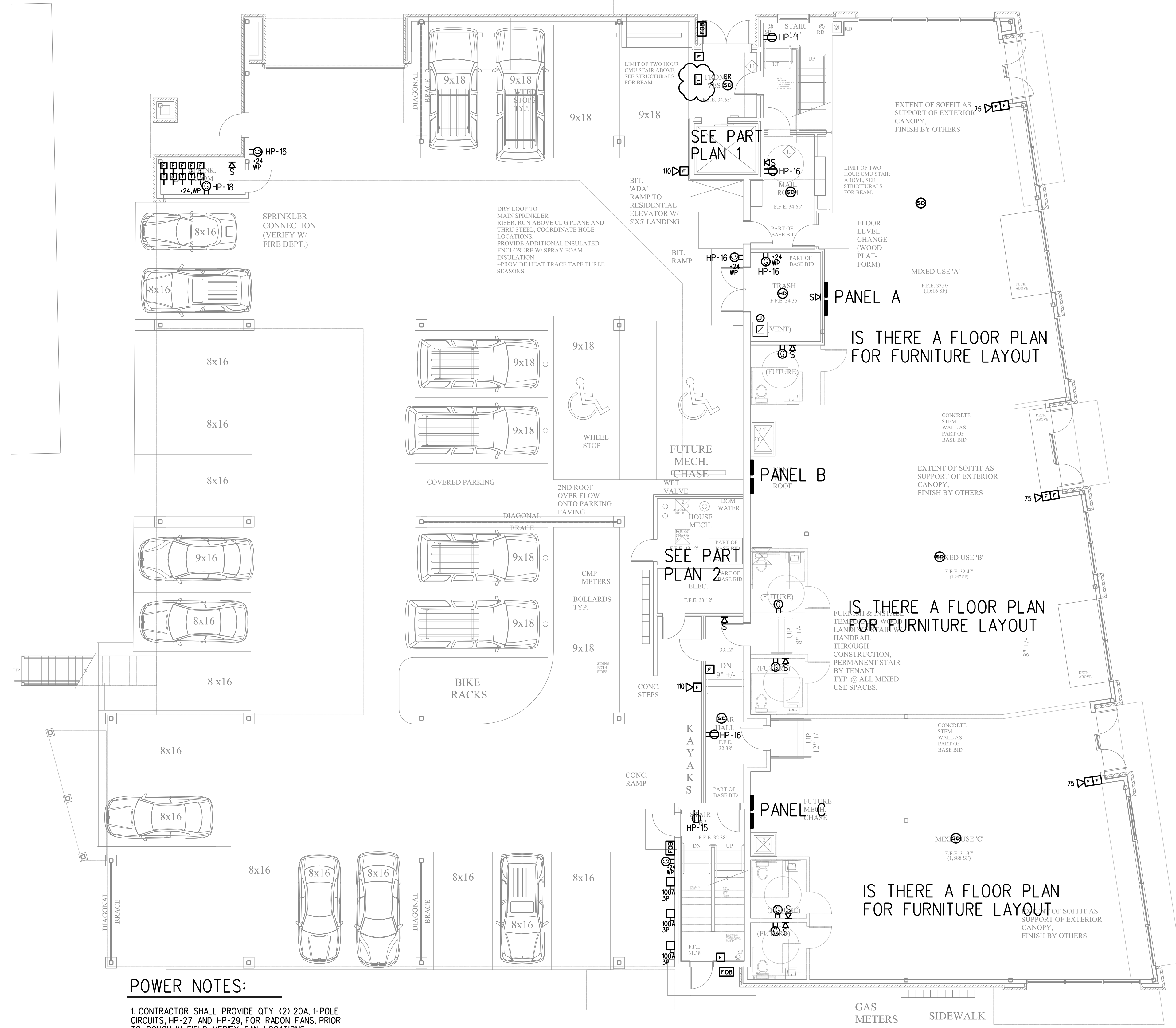


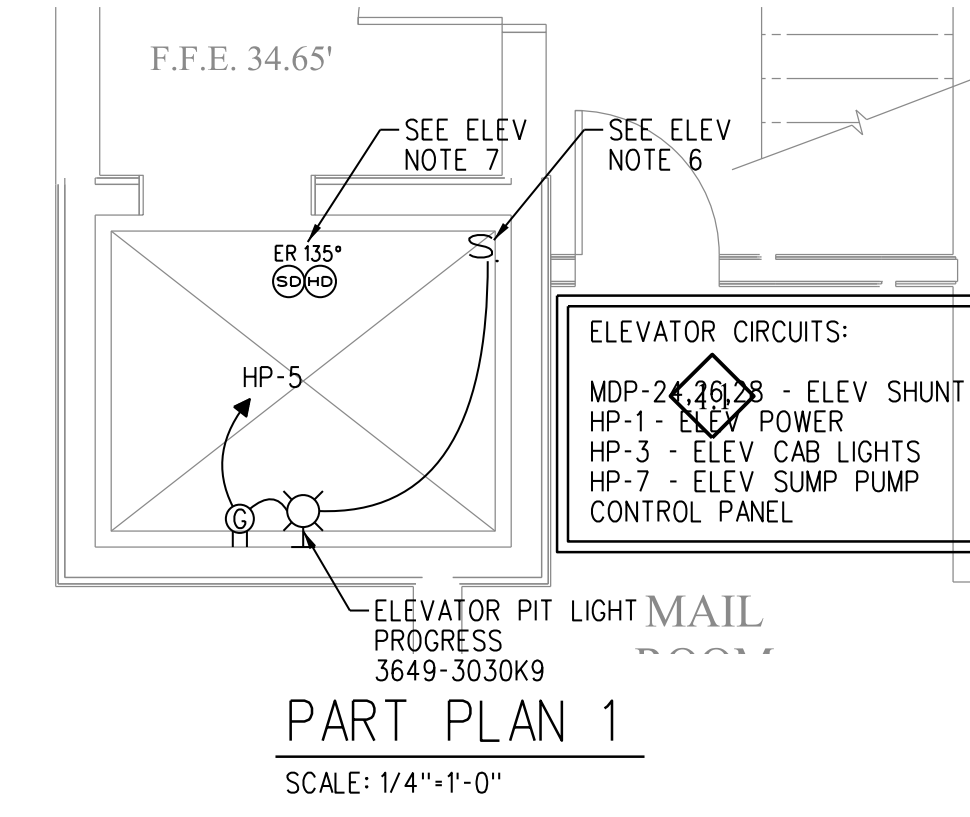
7x7
TRANS.



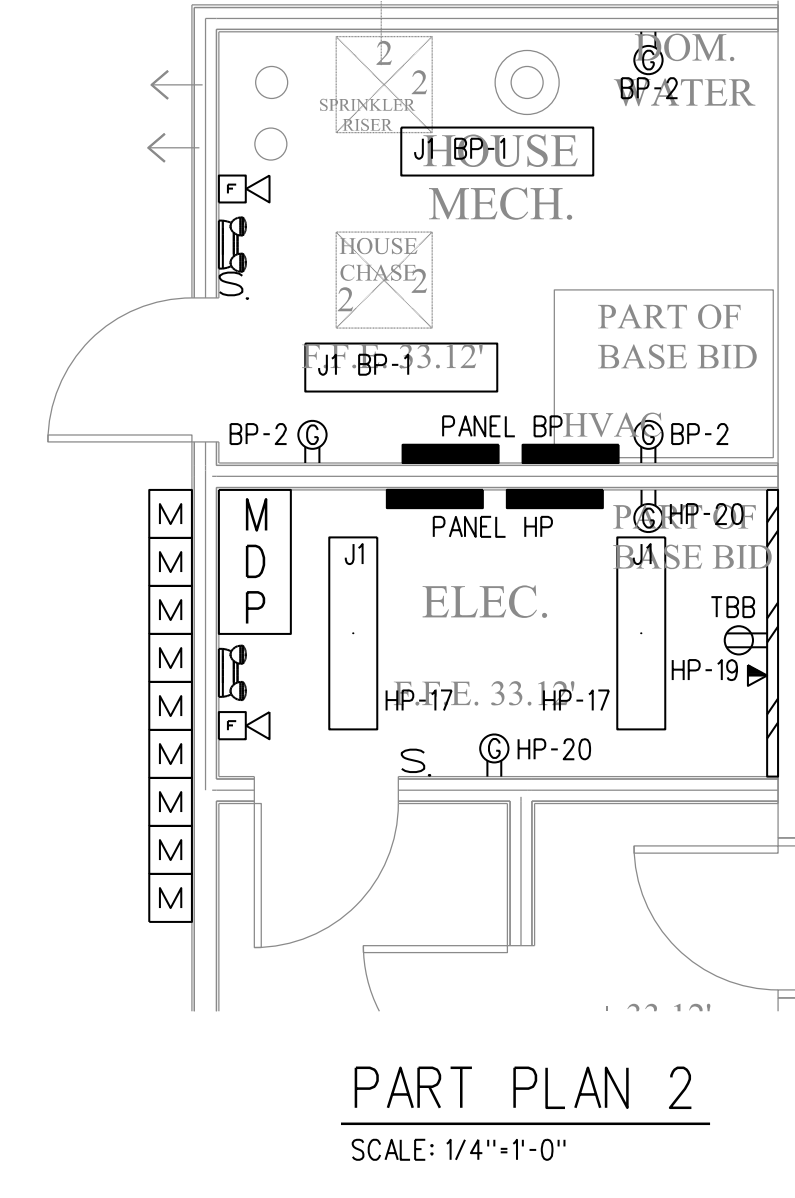
FIRST FLOOR PLAN
SCALE: 1/8" = 1'-0"

POWER NOTES:

1. CONTRACTOR SHALL PROVIDE QTY (2) 20A, 1-POLE CIRCUITS, HP-27 AND HP-29, FOR RADON FANS, PRIOR TO ROUGH-IN FIELD VERIFY FAN LOCATIONS.



PART PLAN 1
SCALE: 1/4"=1'-0"



PART PLAN 2
SCALE: 1/4"=1'-0"

ELEVATOR NOTES

1. CONNECT ALL REQUIRED SMOKE DETECTORS FOR ELEVATOR RECALL. VERIFY REQUIREMENTS WITH ELEVATOR VENDOR AND LOCAL FIRE DEPARTMENT FOR ELEVATOR SMOKE DETECTORS AND INSTALL IN ACCORDANCE WITH NFPA 72.
2. PROVIDE ELEVATOR POWER SHUTDOWN VIA HEAT DETECTORS IN ELEVATOR SHAFT, PIT, AND MACHINE ROOM. HEAT DETECTORS ADJACENT TO SPRINKLER HEADS SHALL ALARM BEFORE SPRINKLER HEAD ACTIVATION BASED ON RATE OF TEMPERATURE RISE FOR THE SPRINKLER HEAD. HEAT DETECTORS SHALL BE INSTALLED WITHIN TWO FEET OF THE SPRINKLER HEAD. PROVIDE A CONNECTION TO A SHUNT-TRIP CIRCUIT BREAKER FOR ELEVATOR POWER SHUTDOWN. THE FIRE ALARM SYSTEM SHALL MONITOR SHUNT TRIP CONTROL POWER. COORDINATE WORK WITH THE LOCAL AUTHORITY HAVING JURISDICTION (AHJ).
3. PROVIDE A CONNECTION FROM THE ELEVATOR TAMPER SWITCH TO THE FIRE ALARM CONTROL PANEL (FACP).
4. COMPLY WITH REQUIREMENTS ASME A17.1 AND NFPA 72.
5. AUTOMATIC TRANSFER SWITCHES (ATS) MONITORING: PROVIDE 2*14AWG*1*14GND IN 1/2" C, FROM ELEVATOR CONTROL PANEL TO ATS DRY CONTACTS.
6. PLACE SWITCH AT TOP OF ELEVATOR PIT ACCESS LADDER. COORDINATE LIGHT AND RECEPTACLE LOCATION WITH ELEVATOR SUMP.
7. PLACE ONE SET IN ELEVATOR PIT AND ONE SET AT TOP OF ELEVATOR SHAFT.
8. COORDINATE LOCATION OF SUMP PUMP CONTROL PANEL WITH ELEVATOR SUMP LOCATION.
9. CONTRACTOR SHALL CONFIRM LOCATION OF ALL ELEVATOR ASSOCIATED EQUIPMENT WITH VENDOR PRIOR TO ROUGH-IN.

Prepared For: _____

Consultant: **BENNETT ENGINEERING**
MECHANICAL/ELECTRICAL
007186949

Architect: _____

Project: **62 India Street**
NEWBURY / HANCOCK ST.,
PORTLAND ME

Revisions: _____

Scale: 1/8" = 1'-0" or AS NOTED

ISSUED FOR PERMIT

FIRST FLOOR POWER PLAN

E3.0

Date: 11/18/16