

**MARK L. MUELLER ARCHITECTS**  
A.I.A.  
100 Commercial Street  
Suite 205  
Portland, Maine 04101  
Phone: 207.774.9057  
Email: rf@muellerarchitects.com

© COPYRIGHT 2016  
MARK MUELLER ARCHITECTS

62

I  
N  
D  
I  
A

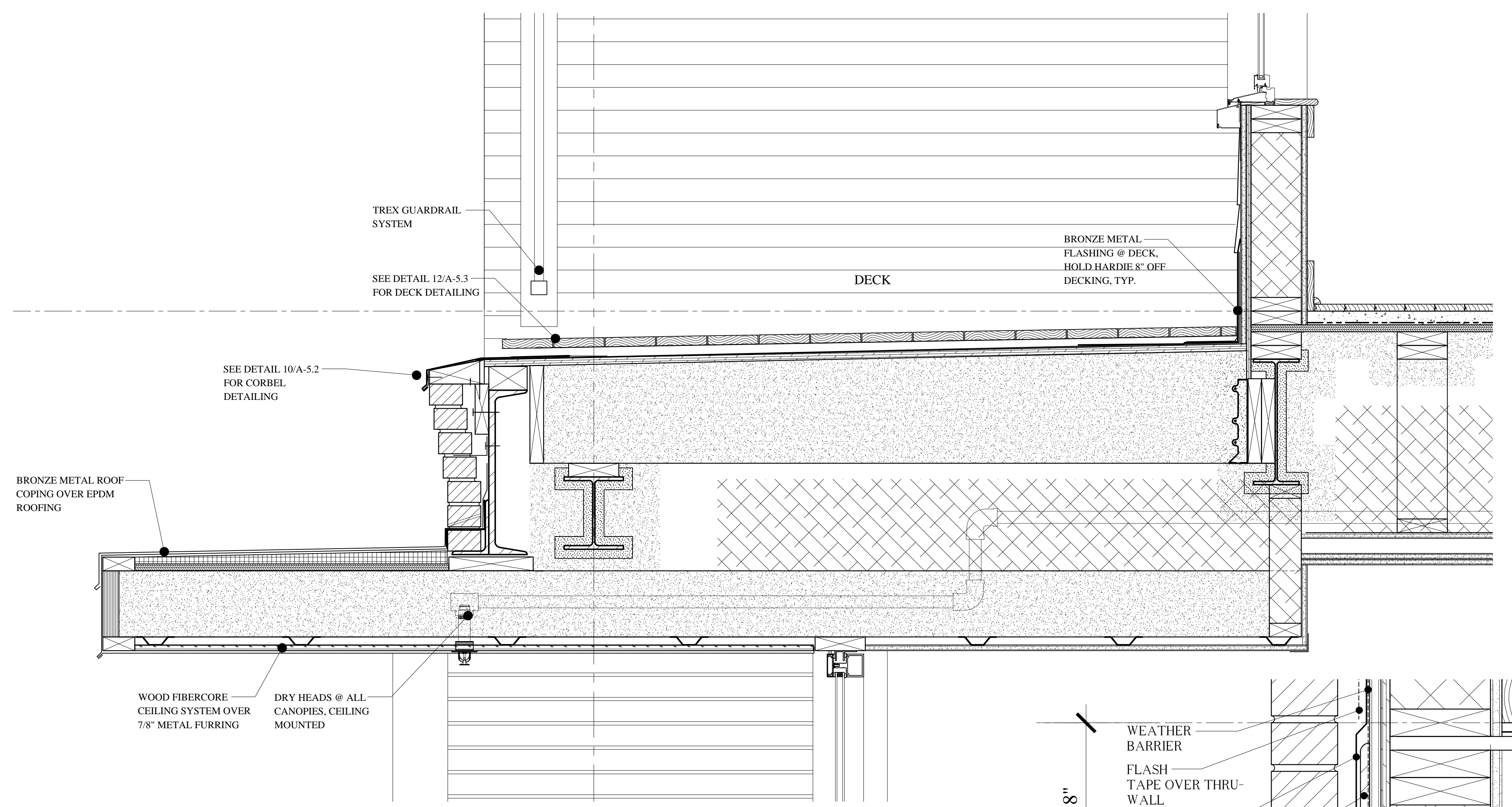
INDIA STREET  
NEIGHBORHOOD  
PORTLAND, MAINE

MISC DETAILS

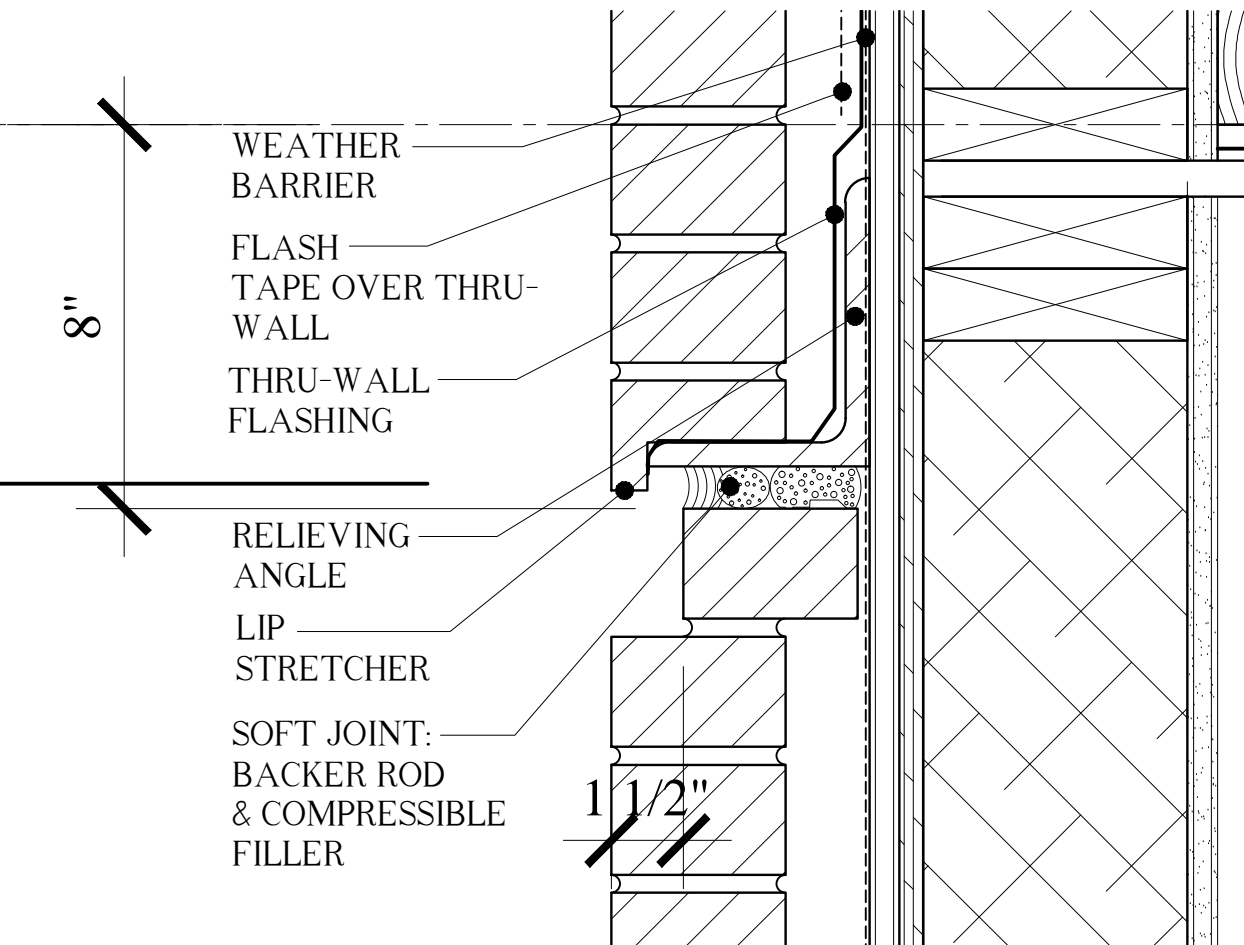
REVISIONS  
DATE  
PROJECT  
INDIA STREET  
DRAWN BY  
CHECK BY  
MAM

A-5.4

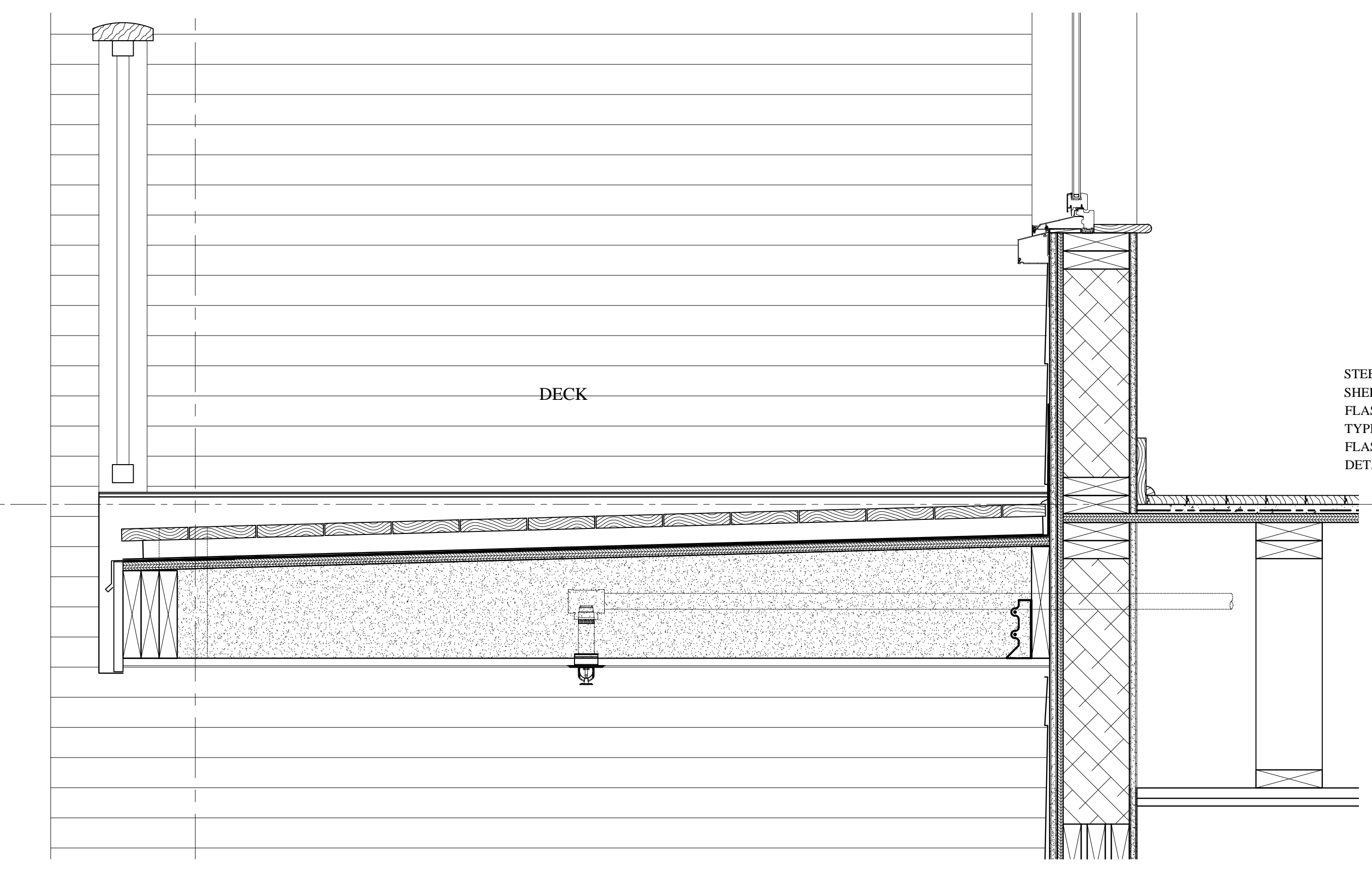
MATERIALS SCHEDULE:	
A1	CAST IN PLACE CONCRETE WALL
A2	CONCRETE SLAB ON GRADE
A3	1 1/2" GYP-CRETE
A4	3/4" GYP-CRETE
A5	SOUND ATTENUATION MAT (1/8") TURN UP WALL - TYPICAL
A6	CONCRETE SLAB (BROOM FINISH @ OUTDOOR PATIO)
A7	CONCRETE PIER
A8	CMU
B1	BRICK VENEER W/ CONTROL JOINTS - TYPICAL
B2	BRICK ROWLOCK WINDOW SILL - TYPICAL
B3	BRICK TERMINATION COURSE (SLOPED STRETCHER COURSE- PRE-MANUFACTURED)
B4	BRICK SOLDIER COURSE HEAD (1 COURSE) - TYPICAL
B5	SUB-GRADE BRICK GROUT SOLID - TYPICAL
B6	MORTAR NET - TYPICAL
B7	WEEP HOLE - TYPICAL
B8	BRICK TIE/ ANCHOR
B9	VERTICAL BRICK RELIEF, 1 1/2" RECESS
B10	PRE-MANUFACTURED STRETCHER BRICK TERMINATION - TYPICAL
B11	BRICK ENTABLATURE: (4) CORBEL, (2) STANDARD
B12	THRU-WALL/ EMBEDDED COPPER FLASHING
B13	FLEXIBLE FLASHING TAPE
B14	COMPRESSIBLE FILLER (CLOSED CELL)
B15	1 1/2" AIR SPACE - TYPICAL
C1	STRUCTURAL STEEL
C2	STEEL LINTEL (LOOSE)
C3	STEEL RELIEVING ANGLE
C4	STEEL TUBE
C5	STEEL HANDRAIL POST W/ SHEET MEMBRANE FLASHING BOOT
C6	STEEL ANGLE
C7	STEEL PIPE HANDRAIL (PAINTED)
C8	STEEL SPIRAL STAIR (W/ WOOD TREADS & STEEL HANDRAIL)
C9	SQUARE ALUMINUM 42" HIGH HANDRAIL SYSTEM, BLACK (PRE-FABRICATED)
C10	STAINLESS STEEL CANOPY SUPPORT SYSTEM
C11	METAL PLATE/CLIP - REFER TO STRUCTURAL DRAWINGS - TYPICAL
C12	METAL STUD
C13	PVC SLEEVE (CAST IN CONC) NON SHRINK EPOXY GROUT
D1	WOOD FRAME WALL CONSTRUCTION - TYPICAL
D2	STRUCTURAL "OSB" SHEATHING (REFER TO STRUCTURAL) - TYPICAL
D3	WOOD BLOCKING
D4	WOOD NAILER
D5	WOOD FRAME FLOOR TRUSS SYSTEM - TYPICAL
D6	3/4" STRUCTURAL FLOOR SHEATHING - TYPICAL
D7	FIRE RETARDANT TREATED LUMBER - TYPICAL
D8	P.T. 2x SILL PLATE - TYPICAL
D9	BUILT-UP 2x - TYPICAL
D10	WOOD FRAME ROOF TRUSS SYSTEM - TYPICAL
D11	TAPERED DECK JOISTS (TAPER 1/2" / FT. - TAPER MIN. PER STRUCTURALS) TYP.
D12	DECK SHEATHING (REFER TO STRUCTURALS) - TYPICAL
D13	P.T. SLEEPER W/ EPDM SOLES THREE SIDES (GLUE) - TYPICAL
D14	LVL BEAM/ HEADER
E1	1x6 WOOD TRIM - TYPICAL
E2	1x4 WOOD TRIM - TYPICAL
E3	1x6 WOOD (POPLAR) BASEBOARD W/ 3/4" QUARTER ROUND - TYPICAL
E4	WOOD BASE - REFER TO INTERIOR ELEVATIONS/ FINISH SCHEDULE - TYPICAL
E5	1x4 WOOD (POPLAR) TRIM, PAINTED - TYPICAL
E6	1x WOOD (POPLAR) EXTENSION JAMBS, PAINTED (FIELD APPLIED) - TYPICAL
E7	1x WOOD (POPLAR) SILL PAINTED FINISH (FIELD APPLIED) - TYPICAL
E8	PAINTED MDF CLOSET SHELF & PAINTED WOOD ROD
E9	SOLID SURFACE SHOWER SEAT
E10	MILLWORK
F1	CEMENTITIOUS WATERPROOFING
F2	FLUID APPLIED WATERPROOFING MEMBRANE
F3	EXTRUDED POLYSTYRENE BOARD INSULATION (R-10 MIN.)
F4	CELLULOUS FIBER INSULATION (FULL THICKNESS)
F5	VAPOR RETARDER (UNDER SLAB)
F6	FOAM-IN-PLACE INSULATION SEALANT
F7	CLOSED CELL SPRAY FOAM INSULATION (R-21)
F8	CLOSED CELL SPRAY FOAM INSULATION (R-30)
F9	CLOSED CELL SPRAY FOAM INSULATION (R-35)
F10	OPEN CELL SPRAY FOAM INSULATION (FULL THICKNESS)
F11	POLYSOCYANURATE BOARD INSULATION (POLYSO) - R-20 MIN
F12	POLYSO TAPERED RIGID INSULATION (1/4" MIN TAPER) - R-20 MIN. TYPICAL
F13	WEATHER BARRIER (SHEET W/ OVERLAP) - TYPICAL
F14	WEATHER BARRIER FLASHING TAPE
F15	FOUNDATION WEATHER BARRIER TAPE - TYPICAL
F16	VAPOR BARRIER - TYPICAL
F17	PRE-FABRICATED SILL DRAINAGE PAN (WINDOWS)
F18	COPPER PAN FLASHING W/ WELDED SEAMS, TYP. @ ALL EXTERIOR DECK DOORS.
G1	DRAINABLE BUILDING WRAP - TYPICAL
G2	SOUND ATTENUATED INSULATION (FULL THICKNESS)
G3	EPDM RUBBER DECK ROOFING - TYPICAL
G4	EPDM @ PARAPET WALL - TYPICAL
G5	METAL TRANSITION STRIP - TYPICAL
G6	TERMINATION BAR
G7	EPDM REINFORCING STRIP - TYPICAL
G8	NEOPRENE GASKET/ EXPANSION JOINT BULB - TYPICAL
G9	EPDM PIPE FLASHING
G10	ROOF DRAIN
G11	ROOF HATCH
G12	DRAINAGE MAT
G13	CAPILLARY WEEP
H1	COPPER SHEET FLASHING
H2	ALUMINUM SHEET FLASHING (BRONZE FINISH)
H3	PAINTED STEEL SHEET FLASHING
H4	METAL ROOF EDGE STRIP - TYPICAL
H5	COUNTER FLASHING - TYPICAL
H6	METAL COPING - TYPICAL
H7	METAL FASCIA'S, RAKES AND SOFFITS - TYPICAL
H8	ICE AND WATER SHIELD FLASHING - TYPICAL
H9	5" CLOSED ALUMINUM SQUARE GUTTER & DOWNSPOUT, GREY
H10	METAL FLASHING
H11	WINDOW/DOOR FLASHING SYSTEM - TYPICAL
H12	FLASHING TAPE
I1	12" CEMENTITIOUS SIDING (10" EXPOSURE) W/ METAL BACK FLASHING - TYPICAL
I2	5/8x4 CEMENTITIOUS TRIM
I3	5/8x6 CEMENTITIOUS TRIM
I4	1x6 CEMENTITIOUS TRIM
I5	1x8 CEMENTITIOUS TRIM
I6	1x10 CEMENTITIOUS TRIM
I7	1x CEMENTITIOUS SOFFIT PANEL
I8	1x CEMENTITIOUS TRIM
J1	CEMENTITIOUS SPRAY FIRE RESISTIVE MATERIAL - TYPICAL
J2	FIRE STOPPING
K1	SILL SEALANT - TYPICAL
K2	BACKER ROD (CLOSED CELL) & SEALANT @ BRICK VENEER - TYPICAL
K3	BACKER ROD (CLOSED CELL) & SEALANT (HEAD, JAMB AND SILL) - TYPICAL
K4	CONTROL JOINT W/ CLOSED CELL FOAM FILLER
L1	WOOD DOOR
L2	HOLLOW METAL FRAME W/ SOUND/ SMOKE SEAL
L3	STEEL DOOR (INSULATED)
L4	ALUMINUM FRAME W/ SOUND/ SMOKE SEAL
L5	ALUMINUM DOOR
L6	ALUMINUM DOOR SILL (ADA)
L7	WOOD GLAD DOOR (EXTERIOR)
L8	FIELD APPLIED EXTERIOR DOOR CASING BY MANUFACTURER
L9	METAL OVERHEAD ROLLING DOOR SYSTEM
M1	RESIDENTIAL WOOD CLAD WINDOW
M2	FACTORY MULL (ONLY NARROW MULL) - TYPICAL
M3	FIELD APPLIED EXTERIOR WINDOW CASING BY MANUFACTURER
M4	ALUMINUM STOREFRONT WINDOW SYSTEM
M5	SKYLIGHT W/ FALL PROTECTION GLAZING
N1	EXTERIOR FIRE CODE SHEATHING (DENS GLASS) - TYPICAL
N2	FIRE CODE TYPE "X" GWB
N3	FIRE CODE TYPE "C" GWB
N4	MOISTURE & MOLD RESISTANT GWB
N5	DENS DECK GWB SHEATHING
N6	INTERIOR GWB SHEATHING
N7	GWB FIRE RATED SHAFT WALL ASSEMBLY
N8	TILE BACKER BOARD
N9	1/2" RESILIENT CHANNEL - TYPICAL
N10	7/8" HAT CHANNEL W/ GENIE CLIPS - TYPICAL
N11	7/8" HAT CHANNEL
O1	SUSPENDED NON-RATED EXTERIOR GWB. CEILING
O2	SUSPENDED ACOUSTICAL CEILING
O3	WOOD FIBRECORE CEILING
O4	5" VINYL V-GROOVE CEILING W/ SCOTIA - TYPICAL
P1	FLOOR TILE
P2	WALL TILE
P3	CARPET
P4	RECESSED ENTRY MAT
P5	PRE-ENGINEERED FLOATING HARDWOOD FLOOR - TYPICAL
P6	COMPOSITE EXTERIOR DECKING
P7	VCT
P8	FLOORING TRANSITION STRIP
Q1	RECESSED LIGHT (CEILING MOUNT) - TYPICAL
Q2	RECESSED LIGHT (WALL MOUNT) - TYPICAL, 18" AFF.
Q3	WALL SCIENCE
R1	CRUSHED ROCK
R2	COMPACTED SAND
R3	COMPACTED FILL
R4	FILTER FABRIC
R5	SAND BASE
R6	"OLD PORT" PAVER SIDEWALK - TYPICAL
R7	BITUMINOUS PAVING - TYPICAL
R8	RADON/SUB-SURFACE SOIL MITIGATION SYSTEM (VENT THRU ROOF)
R9	VAPOR RETARDER
R10	GEOTEXTILE FABRIC
R11	WATER STOP
R12	SUB-SURFACE GROUND IMPROVEMENT
ALL EXTERIOR MATERIALS TO MEET NFPA 285	



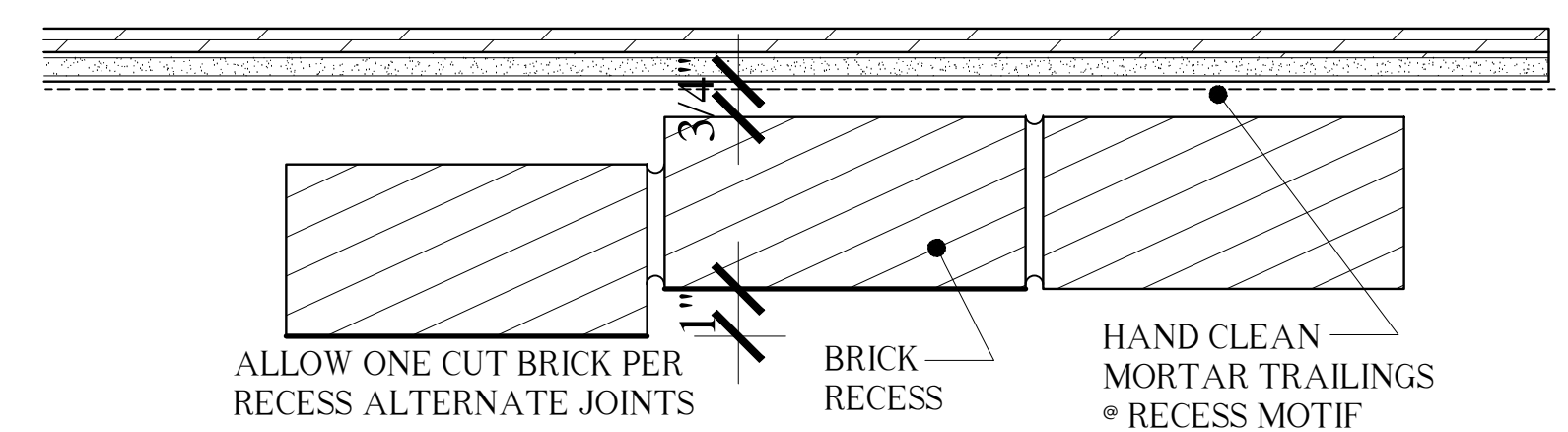
**17 DETAIL @ DECK**  
A-3.5 SCALE: 1 1/2" = 1'-0"



**18 BRICK @ RELIEVING ANGLE**  
A-3.5 SCALE: 3" = 1'-0"



**11 BRICK DETAIL @ DECK**  
A-3.5 SCALE: 1 1/2" = 1'-0"



**BRICK RELIEF DETAIL**  
SCALE: 3" = 1'-0"

**11.1 DETAIL @ DECK**  
A-3.5 SCALE: 1 1/2" = 1'-0"

CONSTRUCTION SET  
NOVEMBER 18, 2016