

**MARK
MUELLER
ARCHITECTS**
A.I.A.
100 Commercial Street
Suite 205
Portland, Maine 04101
Phone: 207.774.9057
Email: rfi@muellerarchitects.com

© COPYRIGHT 2016
MARK MUELLER ARCHITECTS

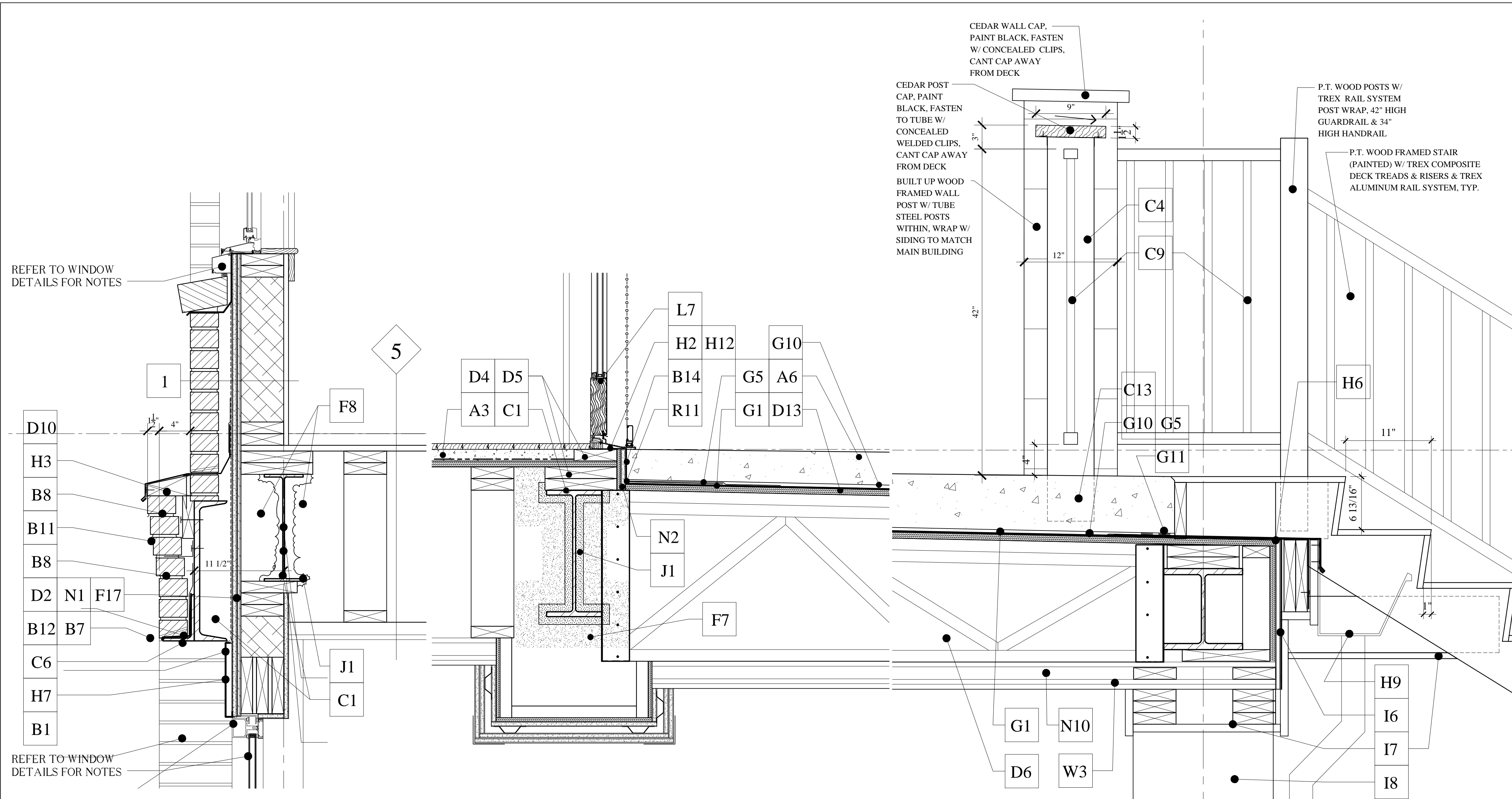
62
**I
N
D
I
A**

INDIA STREET
NEIGHBORHOOD
PORTLAND, MAINE

DETAILS
REVISIONS
DATE
PROJECT
INDIA STREET
DRAWN BY
CHECK BY
MAM

A-5.2

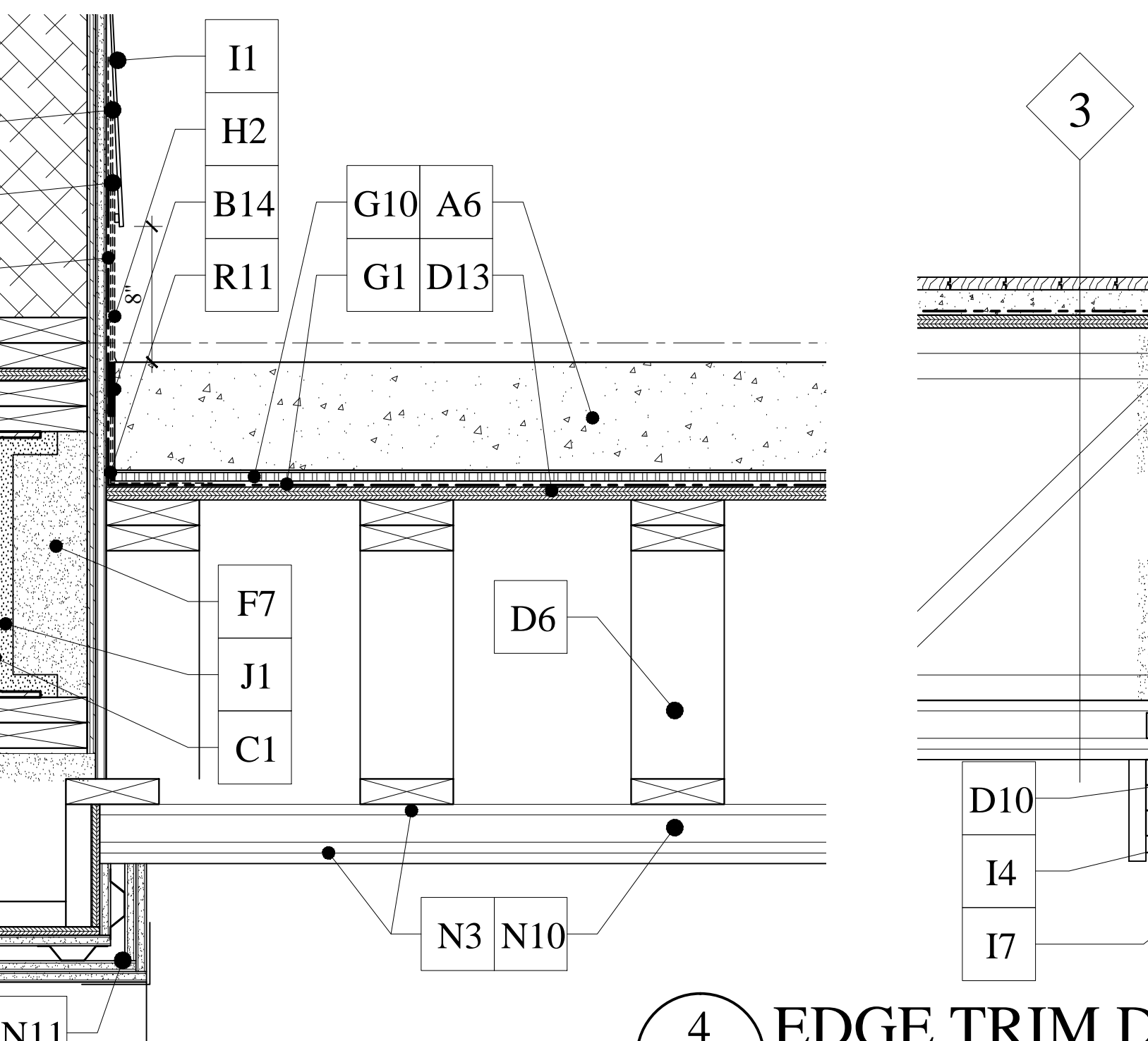
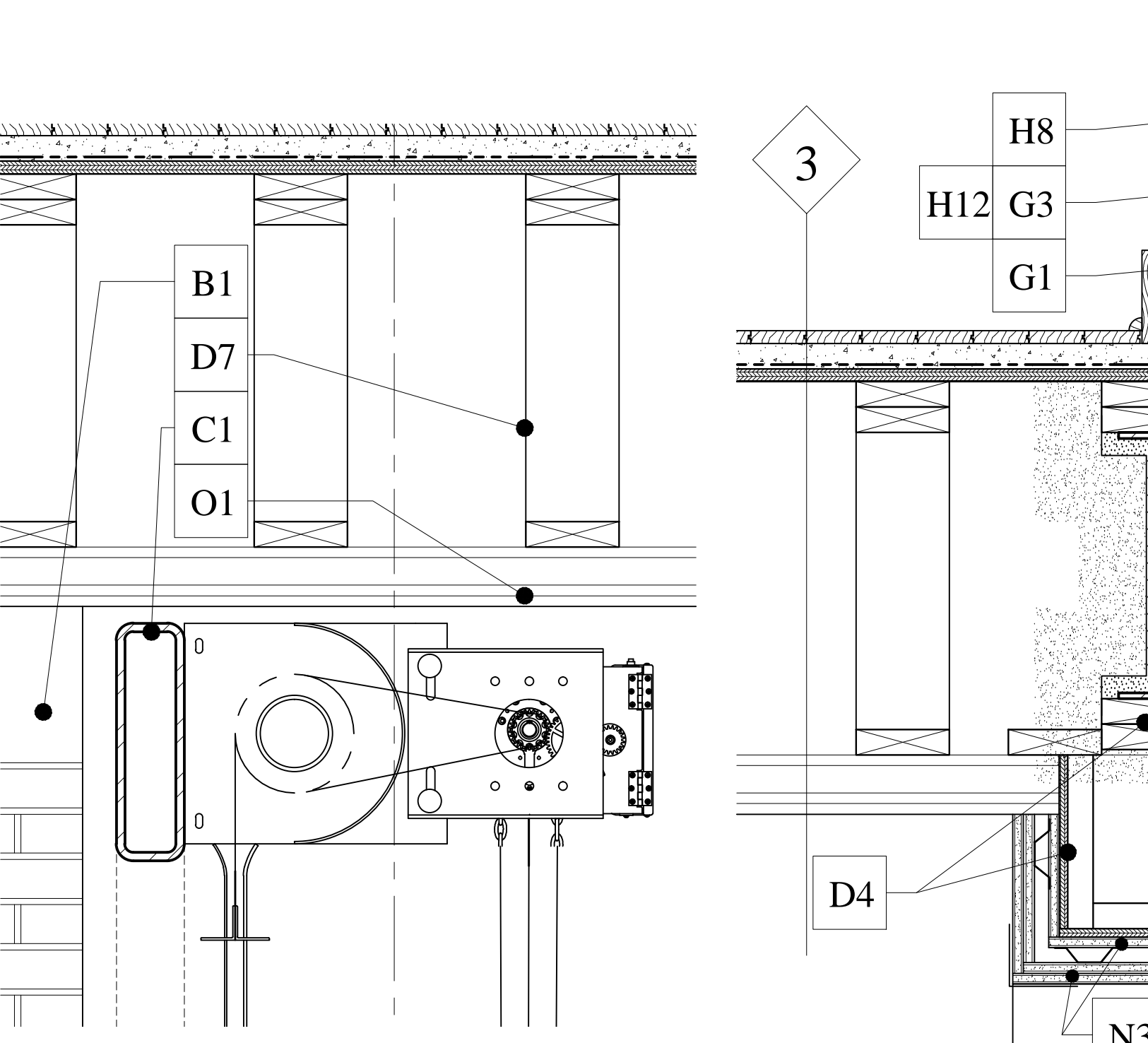
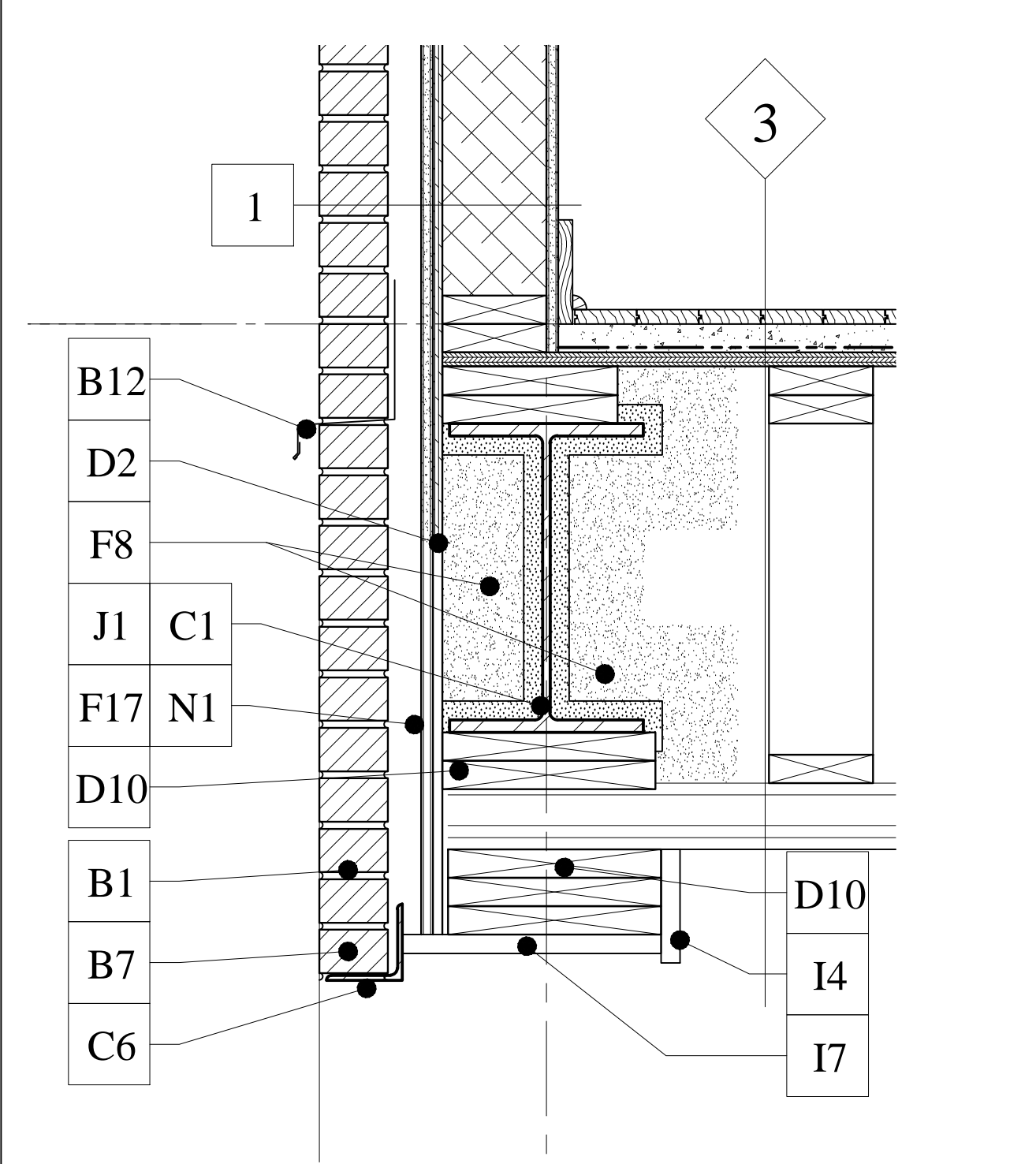
| MATERIALS SCHEDULE: | |
|---------------------|--------------------------------------------------------------------------|
| A1 | CAST IN PLACE CONCRETE WALL |
| A2 | CONCRETE SLAB ON GRADE |
| A3 | 1 1/2" GYP-CRETE |
| A4 | 3/4" GYP-CRETE |
| A5 | SOUND ATTENUATION MAT (1/8") TURN UP WALL - TYPICAL |
| A6 | CONCRETE SLAB (BROOM FINISH @ OUTDOOR PATIO) |
| A7 | CONCRETE PIER |
| A8 | CMU |
| B1 | BRICK VENEER W/ CONTROL JOINTS - TYPICAL |
| B2 | BRICK ROWLOCK WINDOW SILL - TYPICAL |
| B3 | BRICK TERMINATION COURSE (SLOPED STRETCHER COURSE - PRE-MANUFACTURED) |
| B4 | BRICK SOLDIER COURSE HEAD (1 COURSE) - TYPICAL |
| B5 | SUB-GRADE BRICK GROUT SOLID - TYPICAL |
| B6 | MORTAR NET - TYPICAL |
| B7 | WEEP HOLE - TYPICAL |
| B8 | BRICK TIE/ ANCHOR |
| B9 | VERTICAL BRICK RELIEF, 1/2" RECESS |
| B10 | PRE-MANUFACTURED STRETCHER BRICK TERMINATION - TYPICAL |
| B11 | BRICK ENTABLATURE: (4) CORBEL, (2) STANDARD |
| B12 | THRU-WALL/ EMBEDDED COPPER FLASHING |
| B13 | FLEXIBLE FLASHING TAPE |
| B14 | COMPRESSIBLE FILLER (CLOSED CELL) |
| B15 | 1 1/2" AIR SPACE - TYPICAL |
| C1 | STRUCTURAL STEEL |
| C2 | STEEL LINTEL (LOOSE) |
| C3 | STEEL RELIEVING ANGLE |
| C4 | STEEL TUBE |
| C5 | STEEL HANDRAIL POST W/ SHEET MEMBRANE FLASHING BOOT |
| C6 | STEEL ANGLE |
| C7 | STEEL PIPE HANDRAIL (PAINTED) |
| C8 | STEEL SPIRAL STAIR (W/ WOOD TREADS & STEEL HANDRAIL) |
| C9 | SQUARE ALUMINUM 42" HIGH HANDRAIL SYSTEM, BLACK (PRE-FABRICATED) |
| C10 | STAINLESS STEEL CANOPY SUPPORT SYSTEM |
| C11 | METAL PLATE/CLIP - REFER TO STRUCTURAL DRAWINGS - TYPICAL |
| C12 | METAL STUD |
| C13 | PVC SLEEVE (CAST IN CONC.) NON SHRINK EPOXY GROUT |
| D1 | WOOD FRAME WALL CONSTRUCTION - TYPICAL |
| D2 | STRUCTURAL "OSB" SHEATHING (REFER TO STRUCTURAL) - TYPICAL |
| D4 | WOOD BLOCKING |
| D5 | WOOD NAILER |
| D6 | WOOD FRAME FLOOR TRUSS SYSTEM - TYPICAL |
| D7 | 3/4" STRUCTURAL FLOOR SHEATHING - TYPICAL |
| D8 | FIRE RETARDANT TREATED LUMBER - TYPICAL |
| D9 | P.T. 2x SILL PLATE - TYPICAL |
| D10 | BUILT-UP 2x - TYPICAL |
| D11 | WOOD FRAME ROOF TRUSS SYSTEM - TYPICAL |
| D12 | TAPERED DECK JOISTS (TAPER 1/2" / FT. - TAPER MIN. PER STRUCTURALS) TYP. |
| D13 | DECK SHEATHING (REFER TO STRUCTURALS) - TYPICAL |
| D14 | P.T. SLEEPER W/ EPDM SOLES THREE SIDES (GLUE) - TYPICAL |
| D15 | LVL BEAM/ HEADER |
| E1 | 1x6 WOOD TRIM - TYPICAL |
| E2 | 1x4 WOOD TRIM - TYPICAL |
| E3 | 1x6 WOOD (POPLAR) BASEBOARD W/ 3/4" QUARTER ROUND - TYPICAL |
| E4 | WOOD BASE - REFER TO INTERIOR ELEVATIONS/FINISH SCHEDULE - TYPICAL |
| E5 | 1x4 WOOD (POPLAR) TRIM, PAINTED - TYPICAL |
| E6 | 1x_ WOOD (POPLAR) EXTENSION JAMBS, PAINTED (FIELD APPLIED) - TYPICAL |
| E7 | 1x_ WOOD (POPLAR) SILL PAINTED FINISH (FIELD APPLIED) - TYPICAL |
| E8 | PAINTED MDF CLOSET SHELF & PAINTED WOOD ROD |
| E9 | SOLID SURFACE SHOWER SEAT |
| E10 | MILLWORK |
| F1 | CEMENTITIOUS WATERPROOFING |
| F2 | FLUID APPLIED WATERPROOFING MEMBRANE |
| F3 | EXTRUDED POLYSTYRENE BOARD INSULATION (R-10 MIN.) |
| F4 | CELLULOUS FIBER INSULATION (FULL THICKNESS) |
| F5 | VAPOR RETARDER (UNDER SLAB) |
| F6 | FOAM-IN-PLACE INSULATION SEALANT |
| F7 | CLOSED CELL SPRAY FOAM INSULATION (R-21) |
| F8 | CLOSED CELL SPRAY FOAM INSULATION (R-30) |
| F9 | CLOSED CELL SPRAY FOAM INSULATION (R-35) |
| F10 | OPEN CELL SPRAY FOAM INSULATION (FULL THICKNESS) |
| F11 | POLYISOCYANURATE BOARD INSULATION (POLYISO) - R-20 MIN. |
| F12 | POLYSO TAPERED RIGID INSULATION (1/4" MIN TAPER) - R-20 MIN. TYPICAL |
| F13 | WEATHER BARRIER (SHEET W/ OVERLAP) - TYPICAL |
| F14 | WEATHER BARRIER FLASHING TAPE |
| F15 | FOUNDATION WEATHER BARRIER TAPE - TYPICAL |
| F16 | VAPOR BARRIER - TYPICAL |
| F17 | PRE-FABRICATED SILL DRAINAGE PAN (WINDOWS) |
| F18 | COPPER PAN FLASHING W/ WELDED SEAMS, TYP. @ ALL EXTERIOR DECK DOORS |
| F19 | DRAINABLE BUILDING WRAP - TYPICAL |
| F20 | SOUND ATTENUATED INSULATION (FULL THICKNESS) |
| G1 | EPDM RUBBER DECK ROOFING - TYPICAL |
| G2 | EPDM @ PARAPET WALL - TYPICAL |
| G3 | METAL TRANSITION STRIP - TYPICAL |
| G4 | TERMINATION BAR |
| G5 | EPDM REINFORCING STRIP - TYPICAL |
| G6 | NEOPRENE GASKET/ EXPANSION JOINT BULB - TYPICAL |
| G7 | EPDM PIPE FLASHING |
| G8 | ROOF DRAIN |
| G9 | ROOF HATCH |
| G10 | DRAINAGE MAT |
| G11 | CAPILLARY WEEP |
| H1 | COPPER SHEET FLASHING |
| H2 | ALUMINUM SHEET FLASHING (BRONZE FINISH) |
| H3 | PAINTED STEEL SHEET FLASHING |
| H4 | METAL ROOF EDGE STRIP - TYPICAL |
| H5 | COUNTER FLASHING - TYPICAL |
| H6 | METAL COPING - TYPICAL |
| H7 | METAL FASCIA'S, RAKES AND SOFFITS - TYPICAL |
| H8 | ICE AND WATER SHIELD FLASHING - TYPICAL |
| H9 | 5" CLOSED ALUMINUM SQUARE GUTTER & DOWNSPOUT, GREY |
| H10 | METAL FLASHING |
| H11 | WINDOW/DOOR FLASHING SYSTEM - TYPICAL |
| H12 | FLASHING TAPE |
| I1 | 12" CEMENTITIOUS SIDING (10" EXPOSURE) W/ METAL BACK FLASHING - TYPICAL |
| I2 | 5/4x4 CEMENTITIOUS TRIM |
| I3 | 5/4x6 CEMENTITIOUS TRIM |
| I4 | 1x6 CEMENTITIOUS TRIM |
| I5 | 1x8 CEMENTITIOUS TRIM |
| I6 | 1x10 CEMENTITIOUS TRIM |
| I7 | 1x_ CEMENTITIOUS SOFFIT PANEL |
| I8 | 1x_ CEMENTITIOUS TRIM |
| J1 | CEMENTITIOUS SPRAY FIRE RESISTIVE MATERIAL - TYPICAL |
| J2 | FIRE STOPPING |
| K1 | SILL SEALANT - TYPICAL |
| K2 | BACKER ROD (CLOSED CELL) & SEALANT @ BRICK VENEER - TYPICAL |
| K3 | BACKER ROD (CLOSED CELL) & SEALANT (HEAD, JAMB AND SILL) - TYPICAL |
| K4 | CONTROL JOINT W/ CLOSED CELL FOAM FILLER |
| L1 | WOOD DOOR |
| L2 | HOLLOW METAL FRAME W/ SOUND/ SMOKE SEAL |
| L3 | STEEL DOOR (INSULATED) |
| L4 | ALUMINUM FRAME W/ SOUND/ SMOKE SEAL |
| L5 | ALUMINUM DOOR |
| L6 | ALUMINUM DOOR SILL (ADA) |
| L7 | WOOD CLAD DOOR (EXTERIOR) |
| L8 | FIELD APPLIED EXTERIOR DOOR CASING BY MANUFACTURER |
| L9 | METAL OVERHEAD ROLLING DOOR SYSTEM |
| M1 | RESIDENTIAL WOOD CLAD WINDOW |
| M2 | FACTORY MULL (ONLY NARROW MULL) - TYPICAL |
| M3 | FIELD APPLIED EXTERIOR WINDOW CASING BY MANUFACTURER |
| M4 | ALUMINUM STOREFRONT WINDOW SYSTEM |
| M5 | SKYLIGHT W/ FALL PROTECTION GLAZING |
| N1 | EXTERIOR FIRE CODE SHEATHING (DENS GLASS) - TYPICAL |
| N2 | FIRE CODE TYPE "X" GWB |
| N3 | FIRE CODE TYPE "C" GWB |
| N4 | MOISTURE & MOLD RESISTANT GWB |
| N5 | DENS DECK GWB SHEATHING |
| N6 | INTERIOR GWB SHEATHING |
| N7 | GWB FIRE RATED SHAFT WALL ASSEMBLY |
| N8 | TILE BACKER BOARD |
| N9 | 1/2" RESILIENT CHANNEL - TYPICAL |
| N10 | 7/8" HAT CHANNEL W/ GENIE CLIPS - TYPICAL |
| N11 | 7/8" HAT CHANNEL |
| O1 | SUSPENDED NON-RATED EXTERIOR GWB CEILING |
| O2 | SUSPENDED ACOUSTICAL CEILING |
| O3 | WOOD FIBERCORE CEILING |
| O4 | 5" VINYL V-GROOVE CEILING W/ SCOTIA - TYPICAL |
| P1 | FLOOR TILE |
| P2 | WALL TILE |
| P3 | CARPET |
| P4 | RECESSED ENTRY MAT |
| P5 | PRE-ENGINEERED FLOATING HARDWOOD FLOOR - TYPICAL |
| P6 | COMPOSITE EXTERIOR DECKING |
| P7 | VCT |
| P8 | FLOORING TRANSITION STRIP |
| Q1 | RECESSED LIGHT (CEILING MOUNT) - TYPICAL |
| Q2 | RECESSED LIGHT (WALL MOUNT) - TYPICAL, 18" AFF. |
| Q3 | WALL SCONCE |
| R1 | CRUSHED ROCK |
| R2 | COMPACTED SAND |
| R3 | COMPACTED FILL |
| R4 | FILTER FABRIC |
| R5 | SAND BASE |
| R6 | "OLD PORT" PAVER SIDEWALK - TYPICAL |
| R7 | BITUMINOUS PAVING - TYPICAL |
| R8 | RADON/SUB-SURFACE SOIL MITIGATION SYSTEM (VENT THRU ROOF) |
| R9 | VAPOR RETARDER |
| R10 | GEOTEXTILE FABRIC |
| R11 | WATER STOP |
| R12 | SUB-SURFACE GROUND IMPROVEMENT |



10 DETAIL @ ENTABLATURE
A-3.5 SCALE: 1 1/2" = 1'-0"

9 DETAIL @ OUTDOOR PATIO
A-3.6 SCALE: 1 1/2" = 1'-0"

8 DETAIL @ OUTDOOR PATIO
A-3.4 SCALE: 1 1/2" = 1'-0"



7 DET. @ GARAGE ENTRY
A-3.3 SCALE: 1 1/2" = 1'-0"

6 GARAGE O.H. DOOR
A-3.3 SCALE: 1 1/2" = 1'-0"

5 DETAIL @ OUTDOOR PATIO
A-3.6 SCALE: 1 1/2" = 1'-0"

CONSTRUCTION SET
NOVEMBER 18, 2016