

**MARK
MUELLER
ARCHITECTS**
A.I.A.
100 Commercial Street
Suite 205
Portland, Maine 04101
Phone: 207.774.9057
Email: rfi@muellerarchitects.com

© COPYRIGHT 2016
MARK MUELLER ARCHITECTS

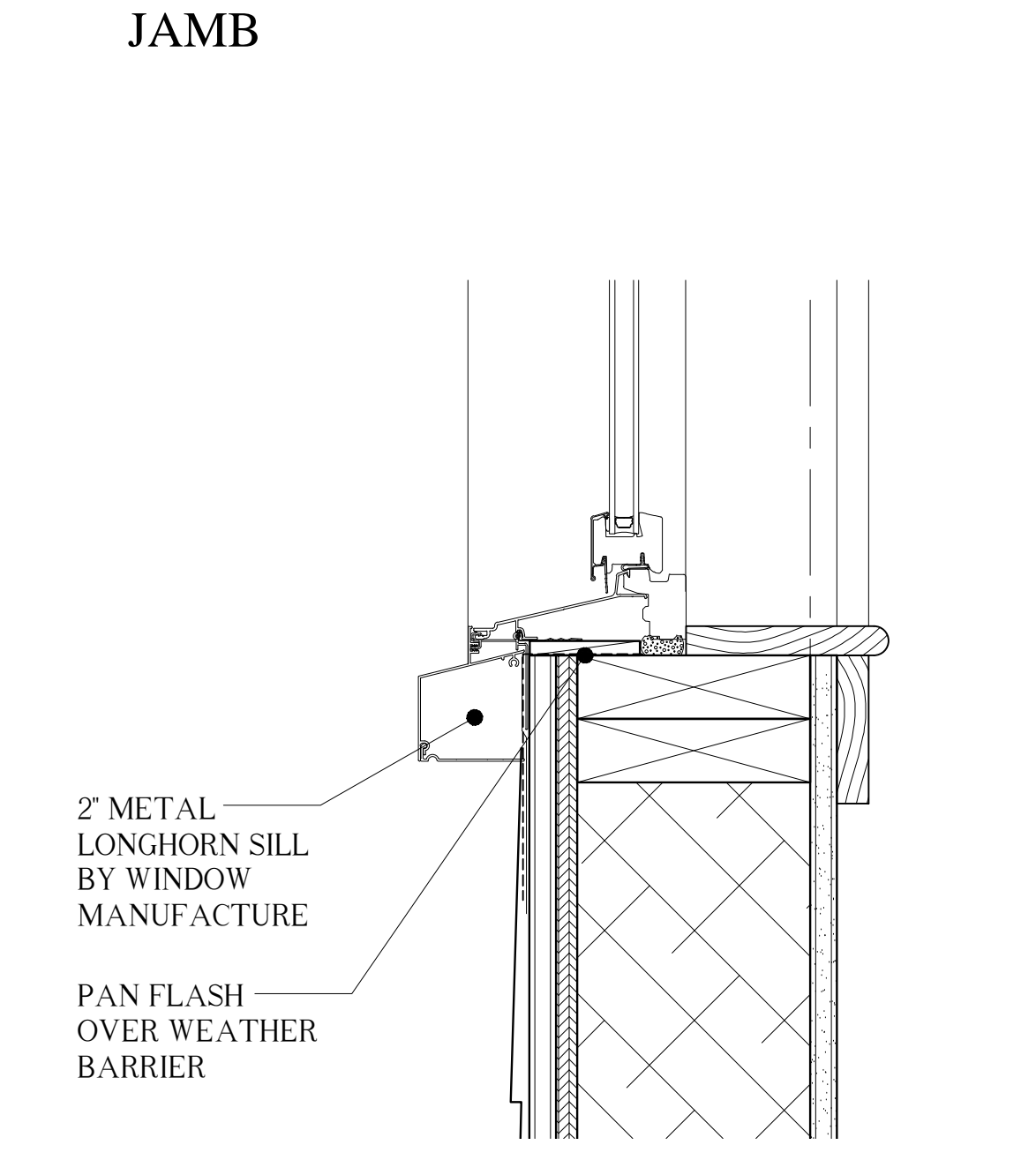
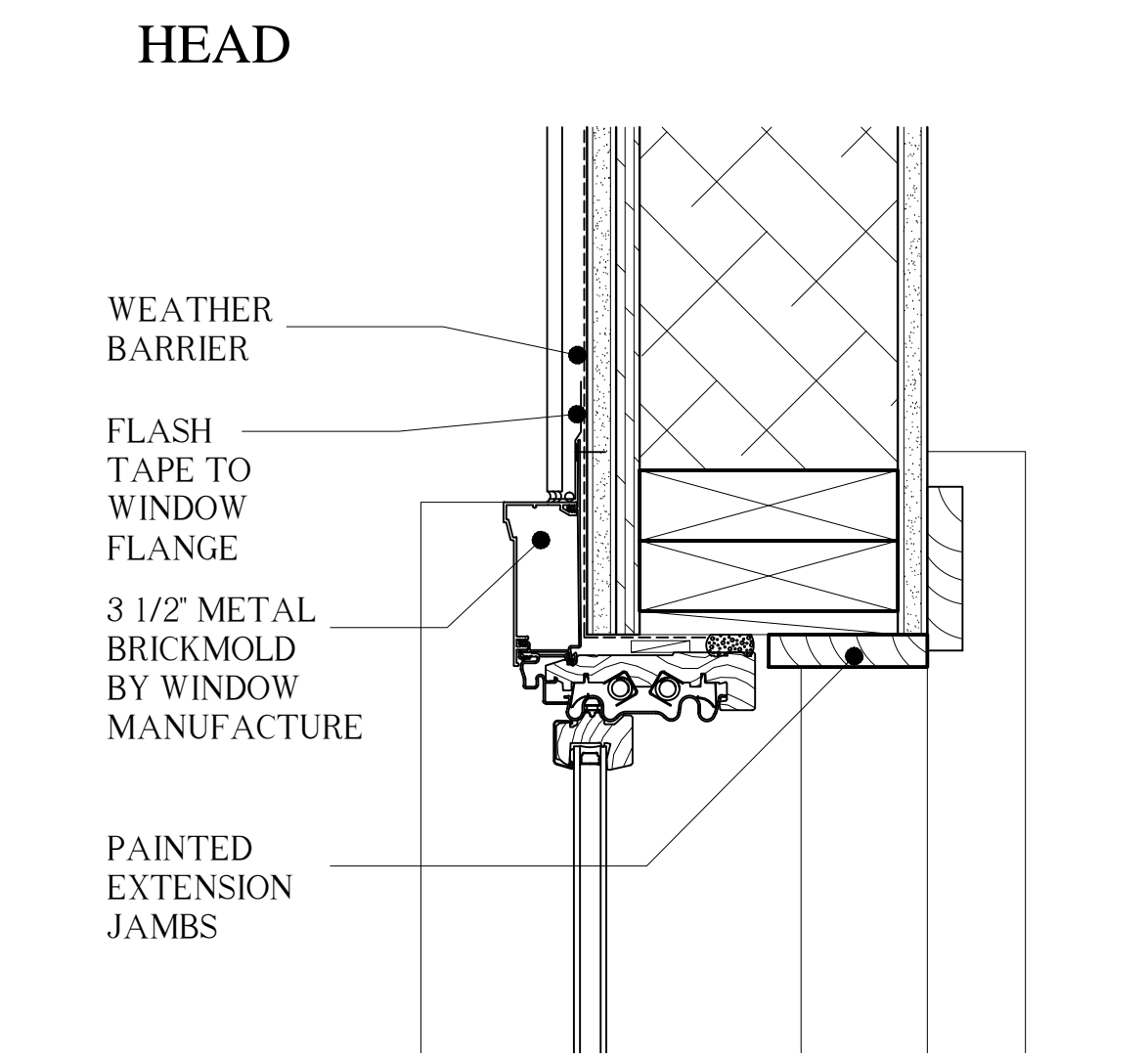
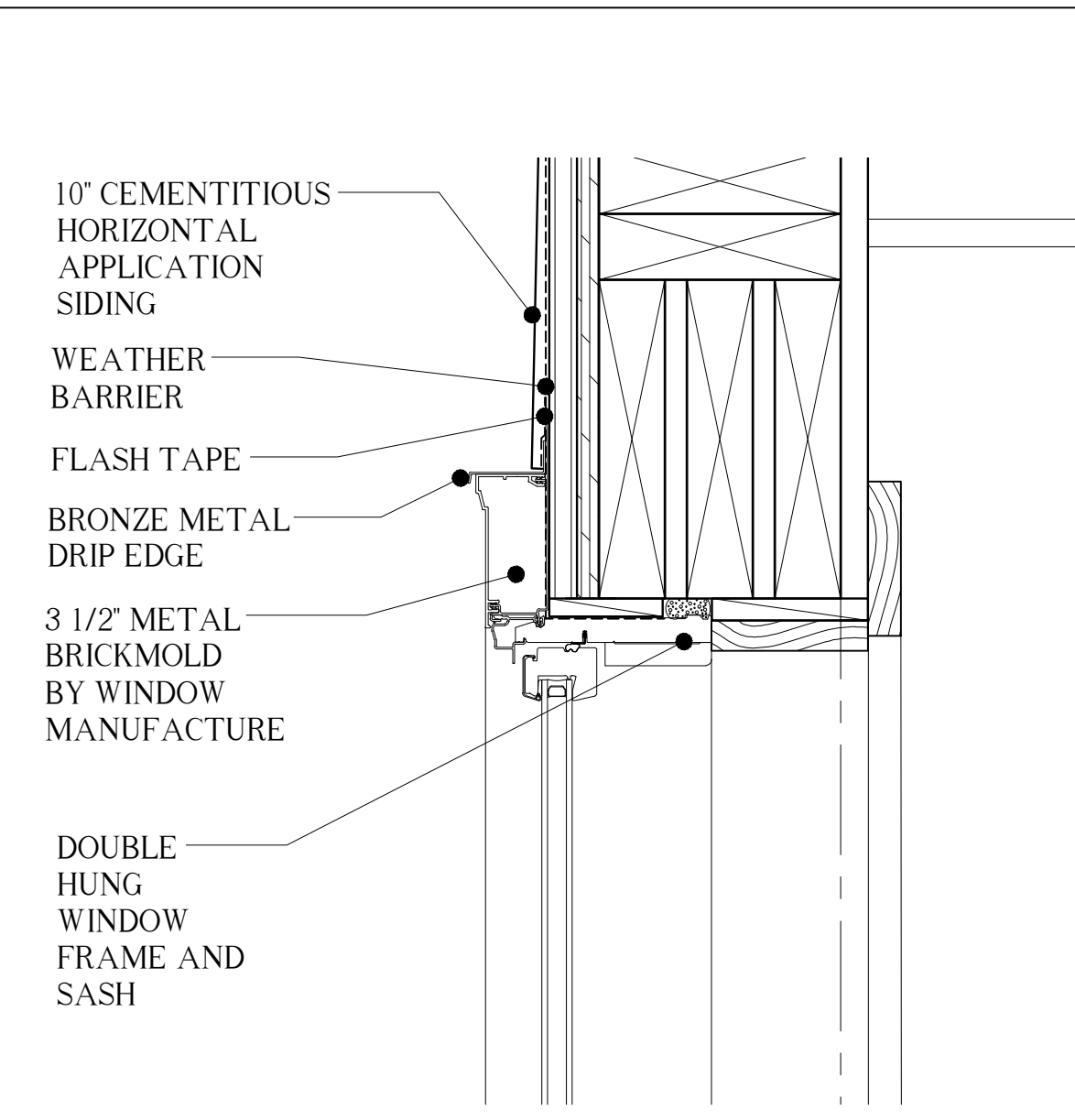
62

I
N
D
I
A

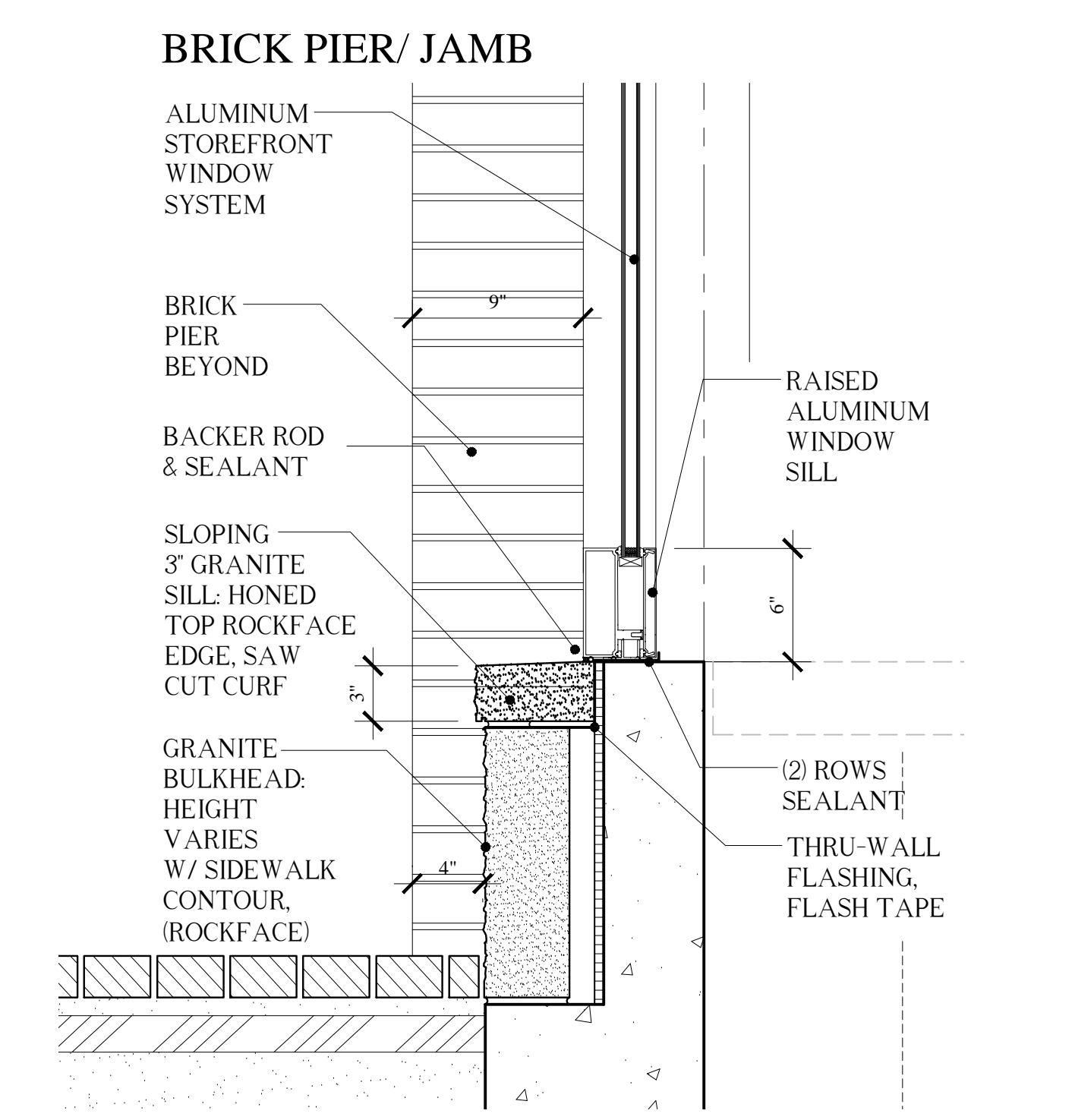
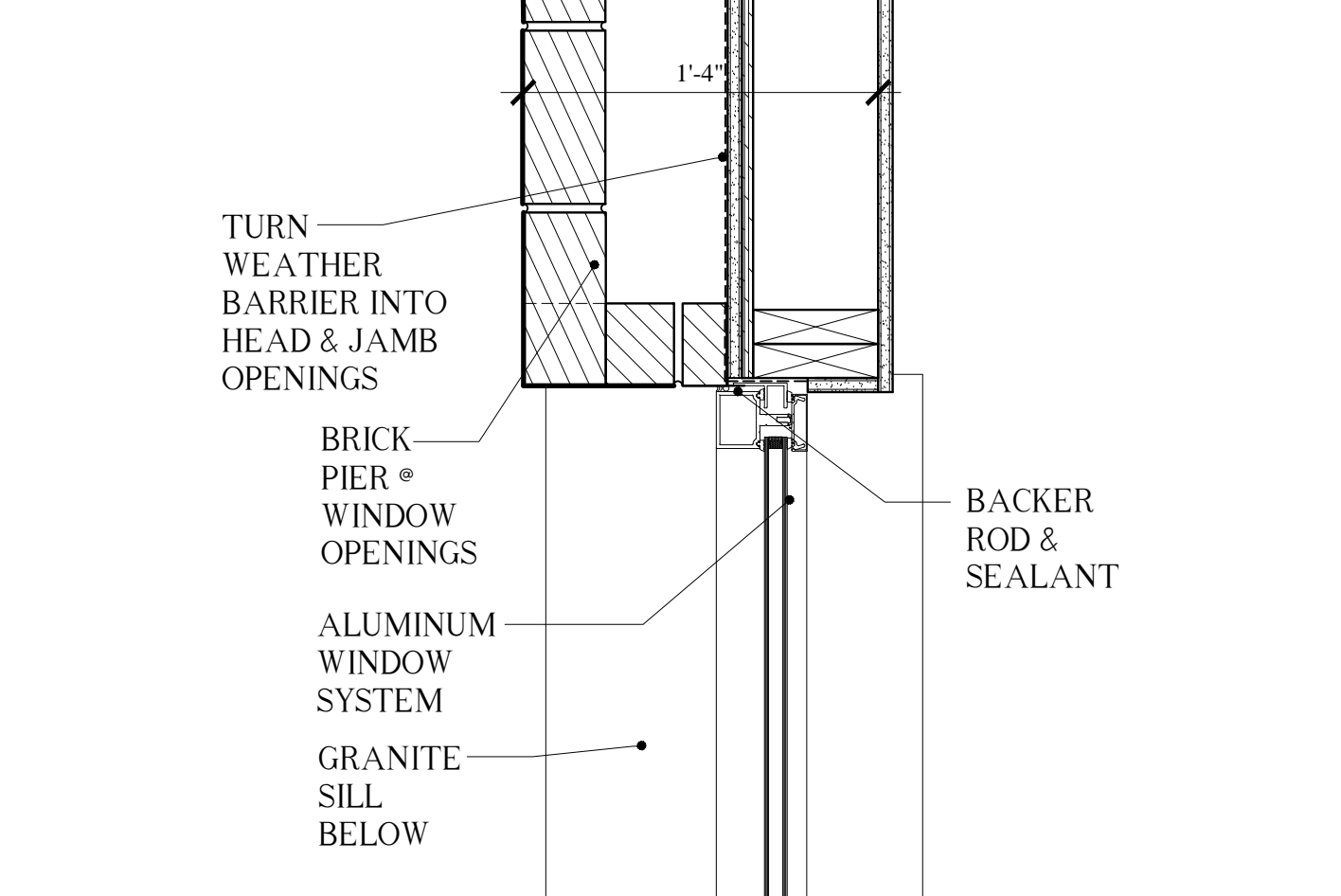
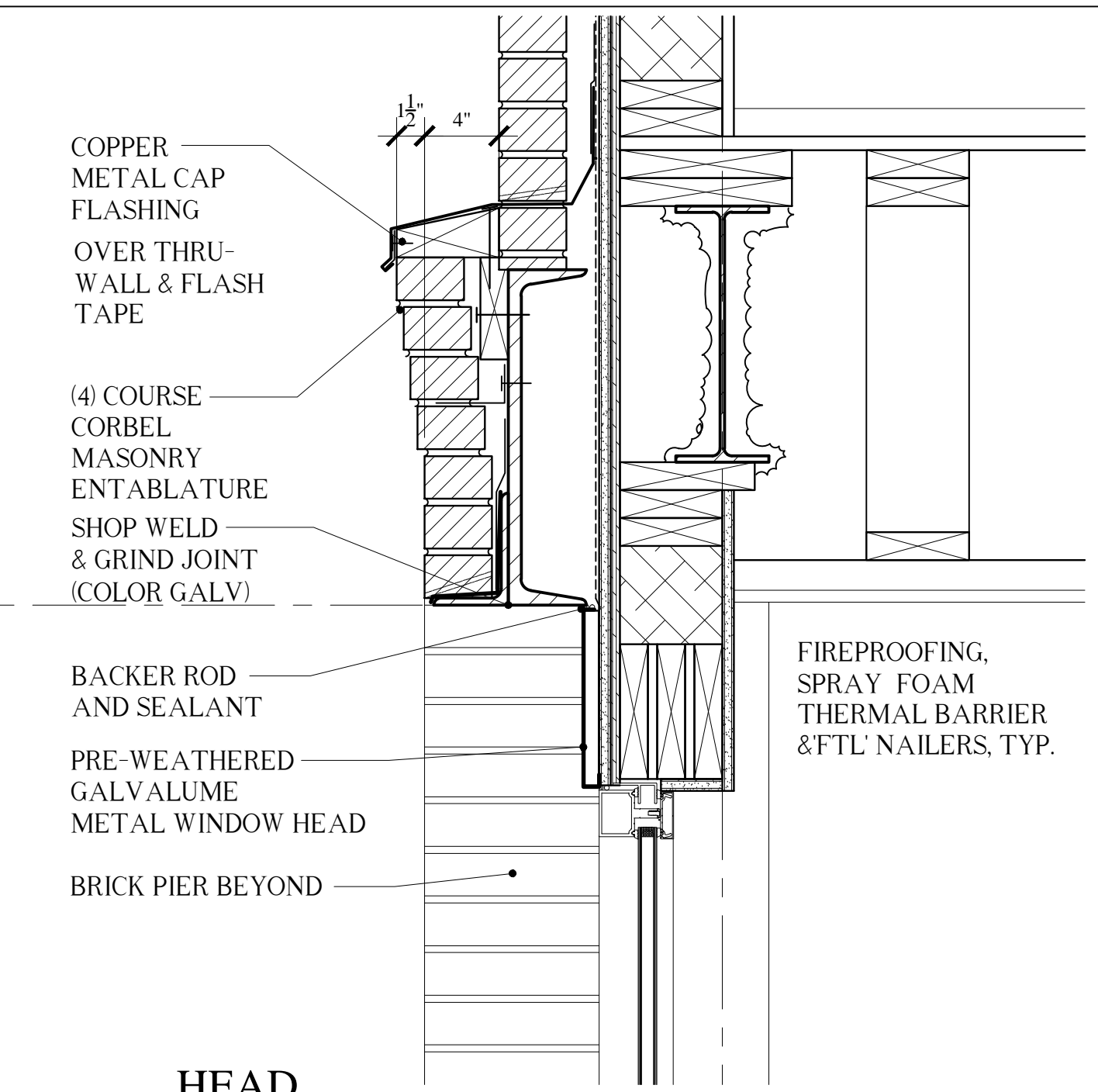
INDIA STREET
NEIGHBORHOOD
PORTLAND, MAINE

WALL SECTIONS

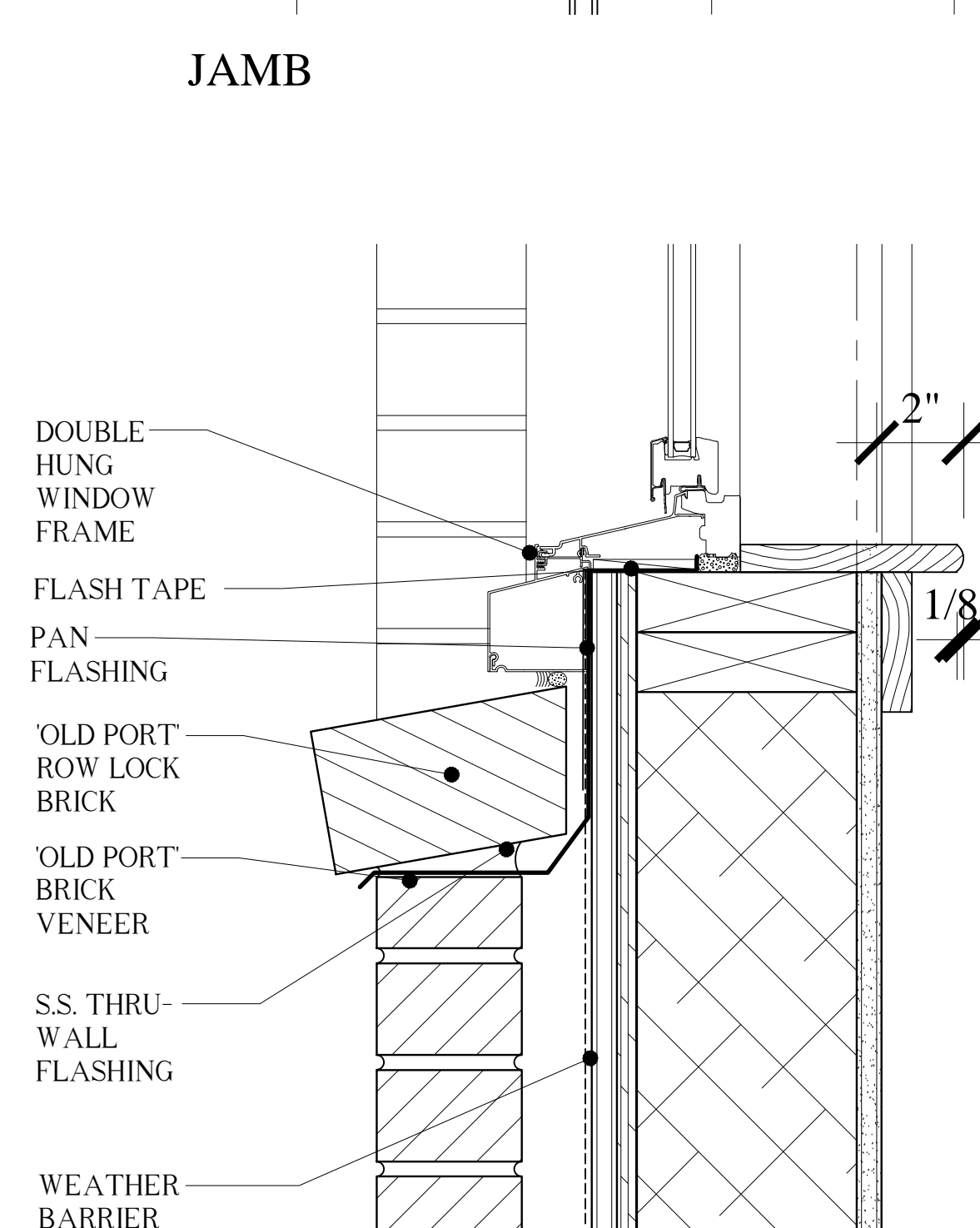
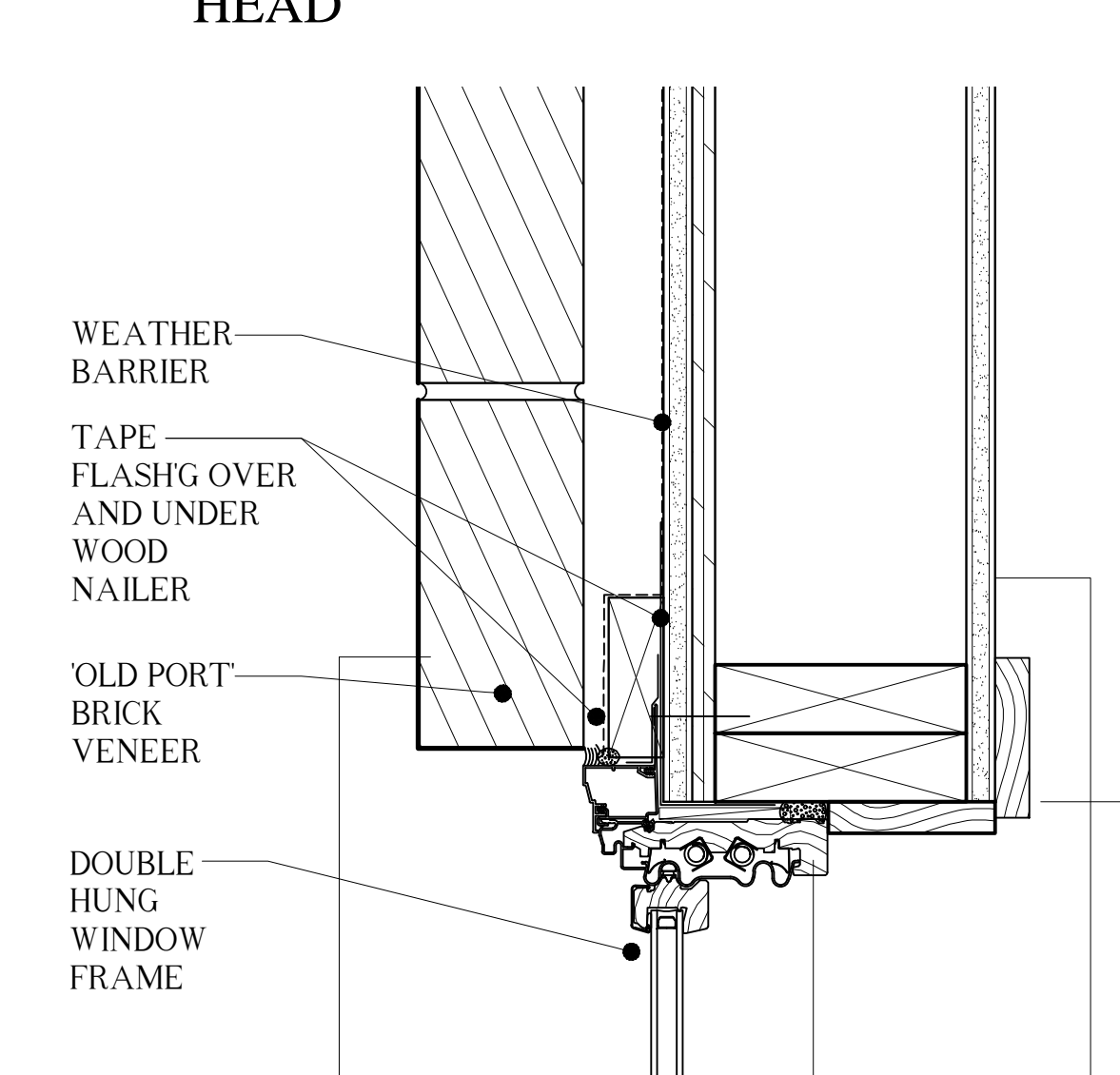
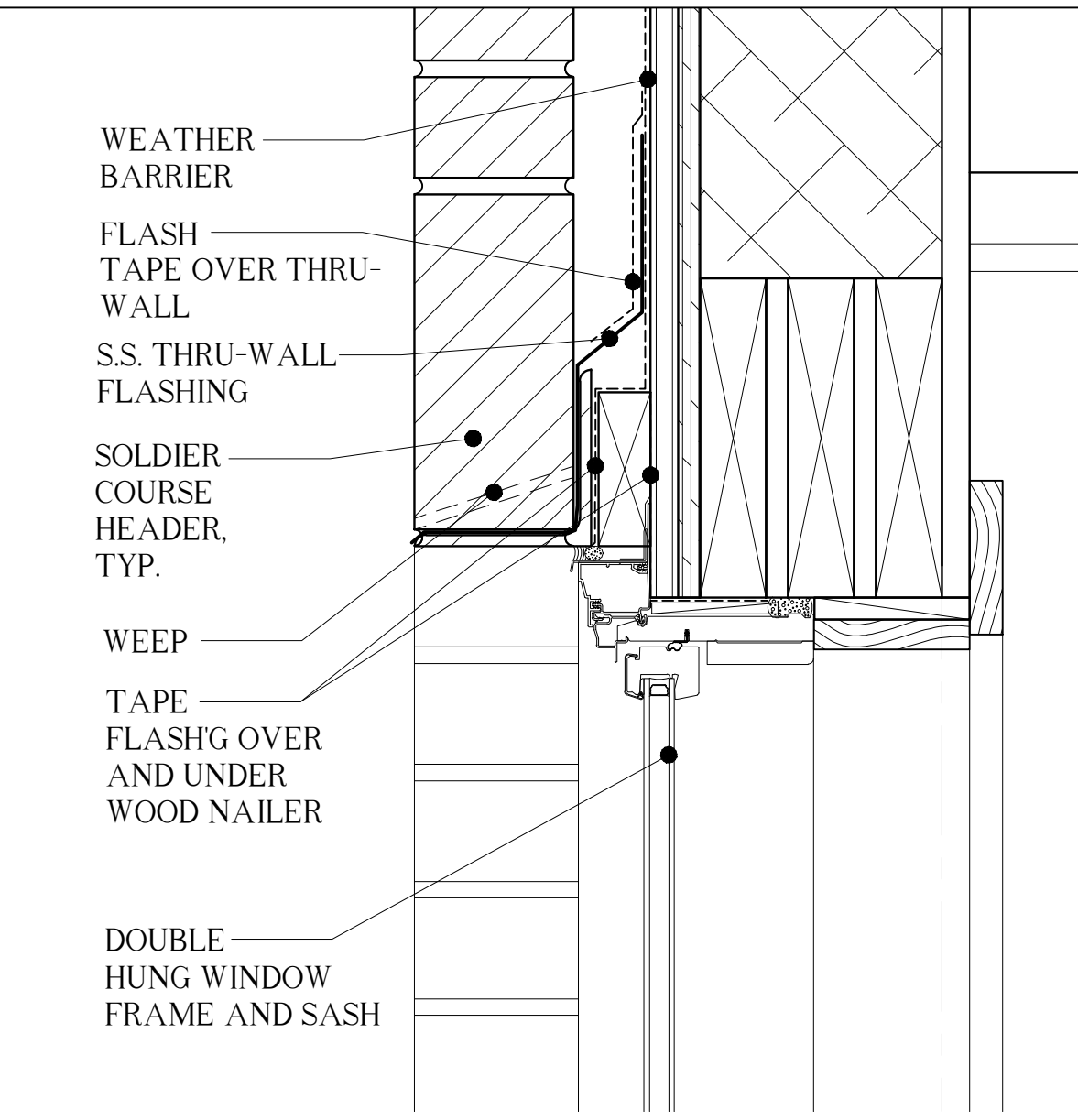
REVISIONS
DATE
PROJECT
INDIA STREET
DRAWN BY
...
CHECK BY
MAM



SILL



SILL



SILL

MATERIALS SCHEDULE:

A1	CAST IN PLACE CONCRETE WALL	F9	CLOSED CELL SPRAY FOAM INSULATION (R-35)
A2	CONCRETE SLAB ON GRADE	F10	OPEN CELL SPRAY FOAM INSULATION (FULL THICKNESS)
A3	1 1/2\"/>		

C1	STRUCTURAL STEEL	H1	COPPER SHEET FLASHING
C2	STEEL UNTEL (LOOSE)	H2	ALUMINUM SHEET FLASHING (BRONZE FINISH)
C3	STEEL RELIEVING ANGLE	H3	PAINTED STEEL SHEET FLASHING
C4	STEEL TUBE	H4	METAL ROOF EDGE STRIP - TYPICAL
C5	STEEL HANDRAIL POST W/ SHEET MEMBRANE FLASHING FOOT	H5	COUNTER FLASHING - TYPICAL
C6	STEEL ANGLE	H6	METAL COPING - TYPICAL
C7	STEEL PIPE HANDRAIL (PAINTED)	H7	METAL FASCIA'S, RAKES AND SOFFITS - TYPICAL
C8	STEEL SPIRAL STAIR (W/ WOOD TREADS & STEEL HANDRAIL)	H8	ICE AND WATER SHIELD FLASHING - TYPICAL
C9	SQUARE ALUMINUM 42\"/>		

D1	WOOD FRAME WALL CONSTRUCTION - TYPICAL	I1	12\"/>
----	--	----	--------

E1	1x6 WOOD TRIM - TYPICAL	L1	WOOD DOOR
E2	1x4 WOOD TRIM - TYPICAL	L2	HOLLOW METAL FRAME W/ SOUND/ SMOKE SEAL
E3	1x6 WOOD (POPLAR) BASEBOARD W/ 3/4\"/>		

F1	CEMENTITIOUS WATERPROOFING	M1	RESIDENTIAL WOOD CLAD WINDOW
F2	FLUID APPLIED WATERPROOFING MEMBRANE	M2	FACTORY MULL (ONLY NARROW MULL) - TYPICAL
F3	EXTRUDED POLYSTYRENE BOARD INSULATION (R-10 MIN.)	M3	FIELD APPLIED EXTERIOR WINDOW CASING BY MANUFACTURER
F4	CELLULOSUS FIBER INSULATION (FULL THICKNESS)	M4	ALUMINUM STOREFRONT WINDOW SYSTEM
F5	VAPOR RETARDER (UNDER SLAB)	M5	SKYLIGHT W/ FALL PROTECTION GLAZING
F6	FOAM-IN-PLACE INSULATION SEALANT	N1	EXTERIOR FIRE CODE SHEATHING (DENS GLASS) - TYPICAL
F7	CLOSED CELL SPRAY FOAM INSULATION (R-21)	N2	FIRE CODE TYPE 'X' GWB
F8	CLOSED CELL SPRAY FOAM INSULATION (R-30)	N3	FIRE CODE TYPE 'C' GWB

N4	MOISTURE & MOLD RESISTANT GWB	O1	SUSPENDED NON-RATED EXTERIOR GWB, CEILING
N5	DENS DECK GWB SHEATHING	O2	SUSPENDED ACOUSTICAL CEILING
N6	INTERIOR GWB SHEATHING	O3	WOOD FIBERCORE CEILING
N7	GWB FIRE RATED SHAFT WALL ASSEMBLY	O4	5\"/>

P1	FLOOR TILE	Q1	RECESSED LIGHT (CEILING MOUNT) - TYPICAL
P2	WALL TILE	Q2	RECESSED LIGHT (WALL MOUNT) - TYPICAL, 18\"/>

ALL EXTERIOR MATERIALS TO MEET NFPA 285

3 WOOD WALL WINDOW DETAILS
A-3.5 SCALE: 3" = 1'-0"

2 ALUM. STOREFRONT WINDOW DETAILS
A-3.5 SCALE: 1 1/2" = 1'-0"

1 BRICK VENEER WINDOW DETAILS
A-3.5 SCALE: 3" = 1'-0"

CONSTRUCTION SET
NOVEMBER 18, 2016

A-5.1