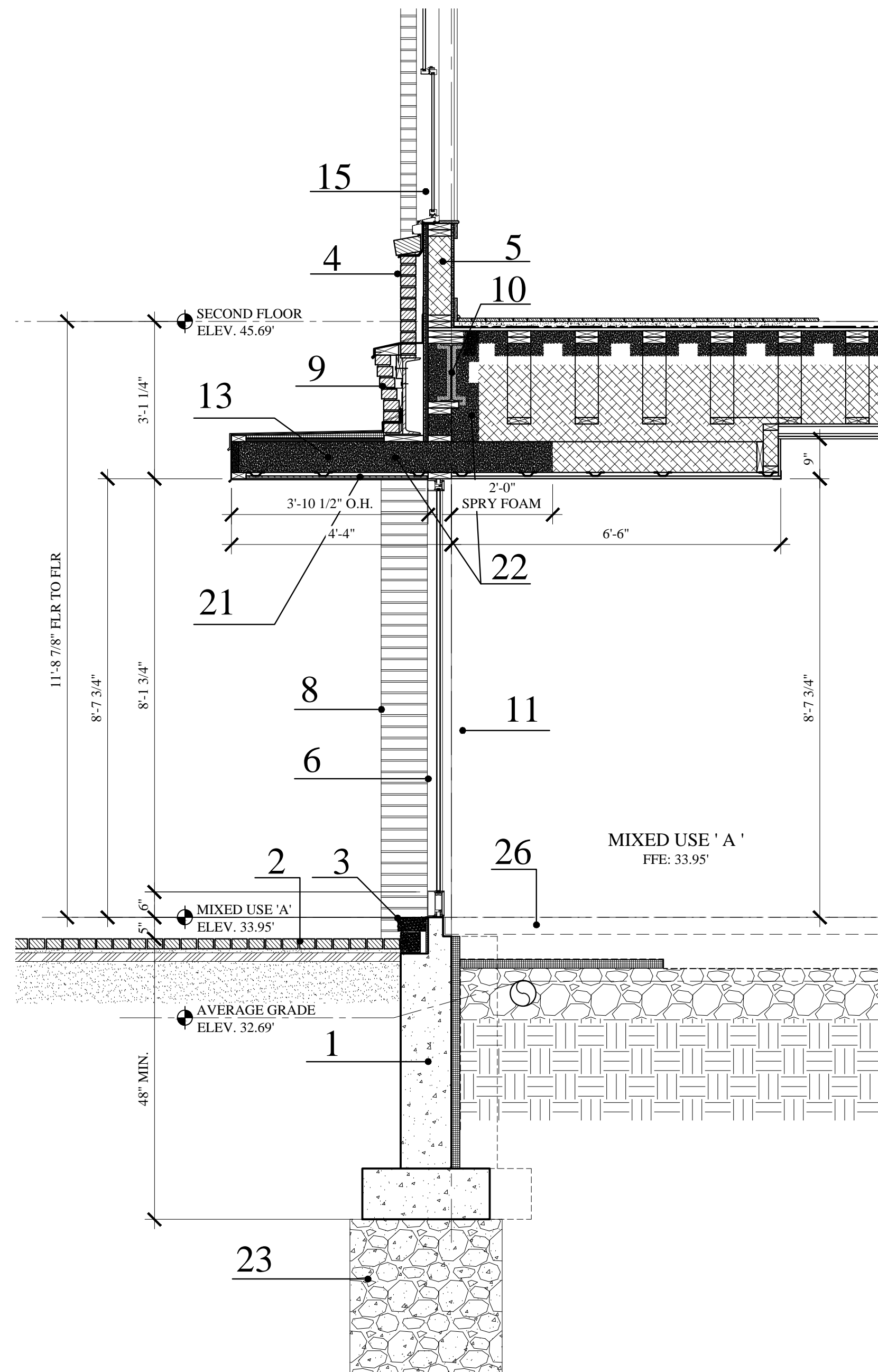


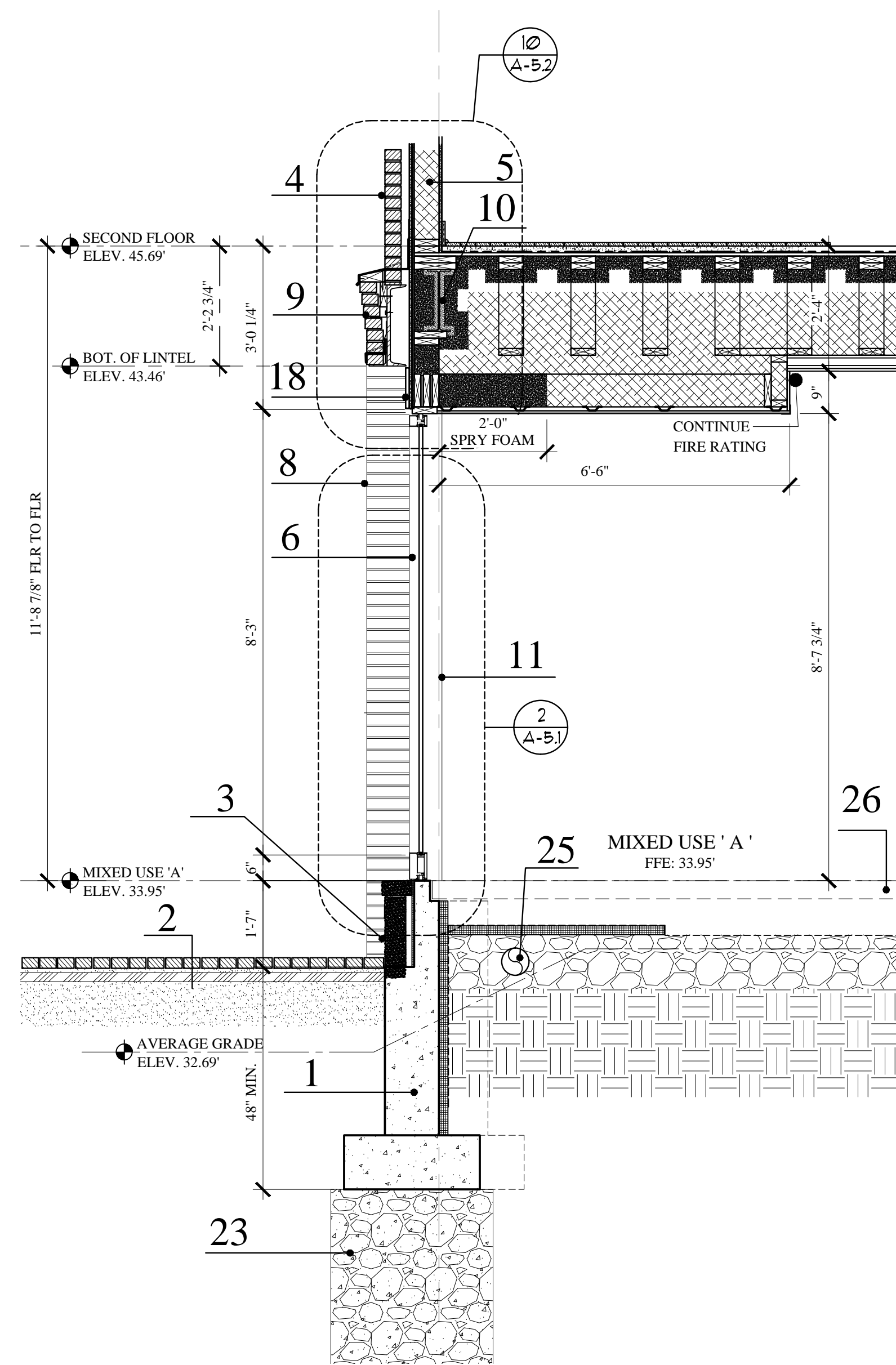
SECTION KEY

1. NEW FOUNDATION
2. BRICK PAVERS
3. GRANITE BASE
4. BRICK VENEER
5. WOOD STUD WALL
6. ALUMINUM WINDOWS
7. ALUMINUM GLASS DOORS
8. BRICK PILASTER
9. BRICK ENTABLATURE
10. STEEL BEAM
11. STEEL COLUMN BEYOND
12. WOOD TRUSSES
13. WOOD CANOPY
14. CEMENTITIOUS SIDING
15. METAL CLAD DOUBLE HUNG WINDOWS
16. ALUMINUM DECK RAIL SYSTEM
17. METAL CORNICE
18. METAL PANEL
19. FINISH CEILING (WATERPROOF)
20. BRICK RETURN
21. WOOD FIBERCORE CEILING
22. CLOSED CELL SPRAY FOAM INSULATION
23. SUB-SURFACE GROUND IMPROVEMENT
24. N/A
25. UNDER SLAB SOIL VENTING (POWER VENT THRU ROOF)
26. CONCRETE SLAB (FUTURE)

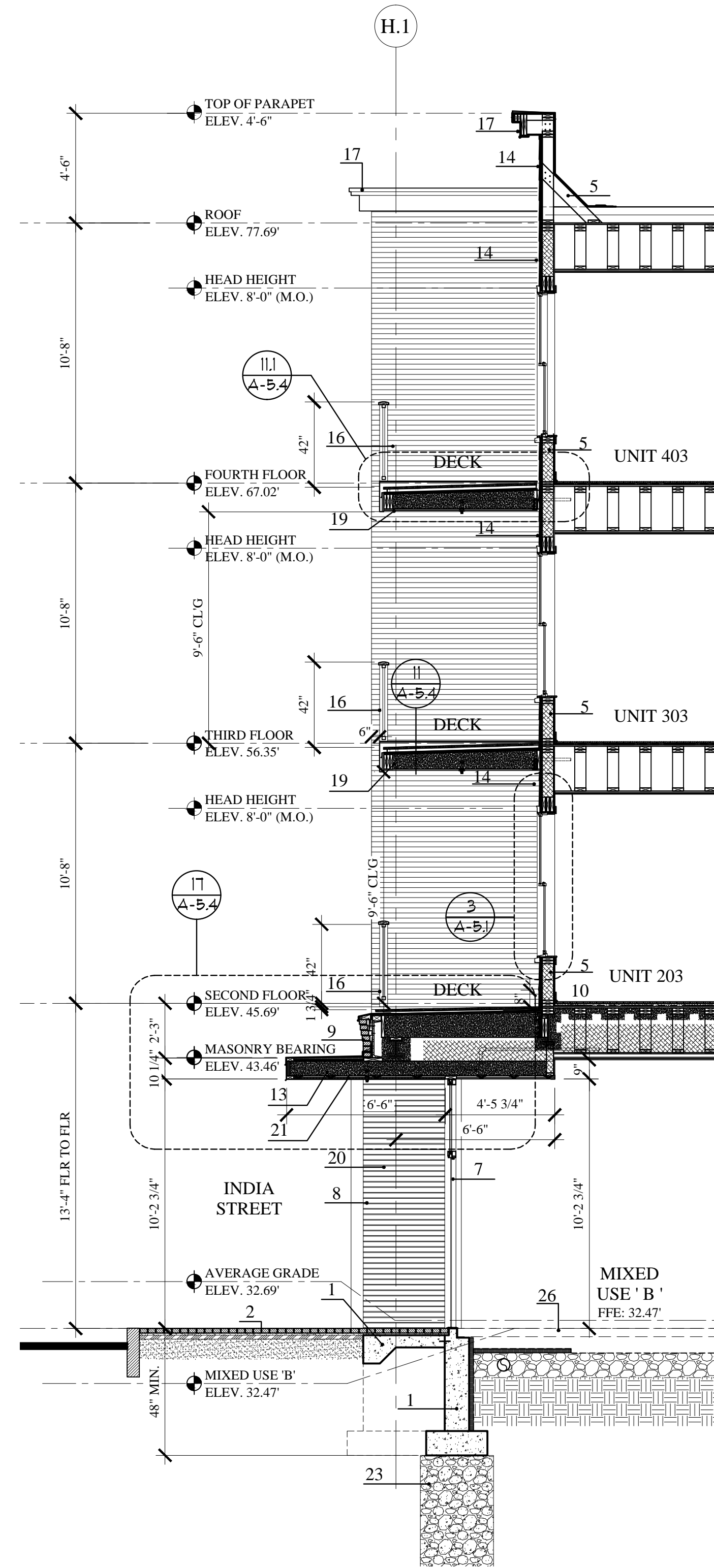
SEE ELEVATION SHEETS FOR MATERIAL SPECIFICATIONS BASED ON APPROVALS WITH THE CITY OF PORTLAND HISTORIC PRESERVATION OFFICE



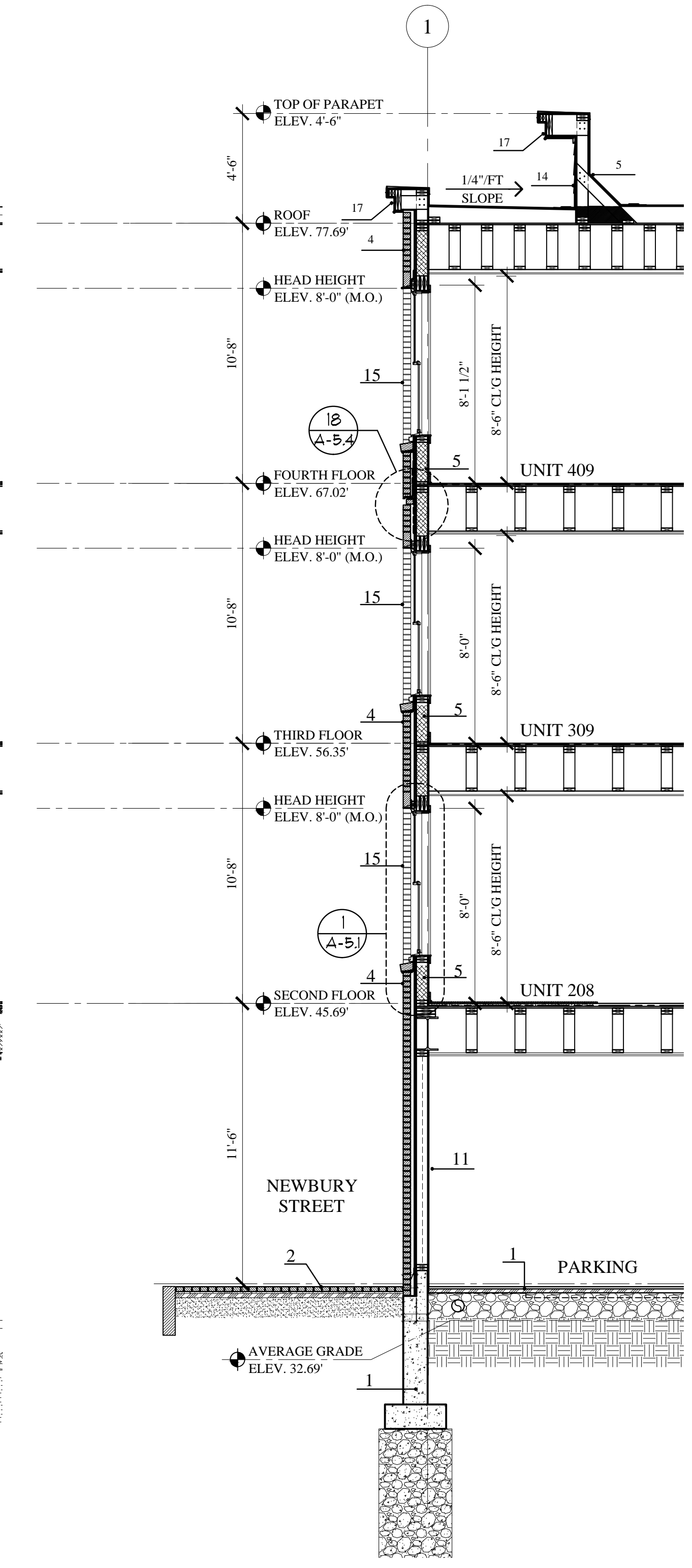
WS:4 WALL SECTION  
A-1.1 SCALE: 1/2" = 1'-0"



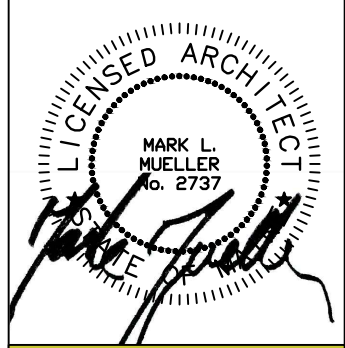
WS:3 WALL SECTION  
A-1.1 SCALE: 1/2" = 1'-0"



WS:2 WALL SECTION  
A-1.1 SCALE: 1/4" = 1'-0"



WS:1 WALL SECTION  
A-3.1 SCALE: 1/4" = 1'-0"



MARK  
MUELLER  
ARCHITECTS  
A.I.A.  
100 Commercial Street  
Suite 205  
Portland, Maine 04101  
Phone: 207.774.9057  
Email:  
rf@muellerarchitects.com

© COPYRIGHT 2016  
MARK MUELLER ARCHITECTS

62

I  
N  
D  
I  
A

INDIA STREET  
NEIGHBORHOOD  
PORTLAND, MAINE

WALL SECTIONS

REVISIONS	DATE
PROJECT	INDIA STREET
DRAWN BY	
CHECK BY	MJM

CONSTRUCTION SET  
NOVEMBER 18, 2016

A-3.5