

**MARK  
MUELLER  
ARCHITECTS**  
A.I.A.  
100 Commercial Street  
Suite 205  
Portland, Maine 04101  
Phone: 207.774.9057  
Email:  
rfi@muellerarchitects.com

© COPYRIGHT 2016  
MARK MUELLER ARCHITECTS

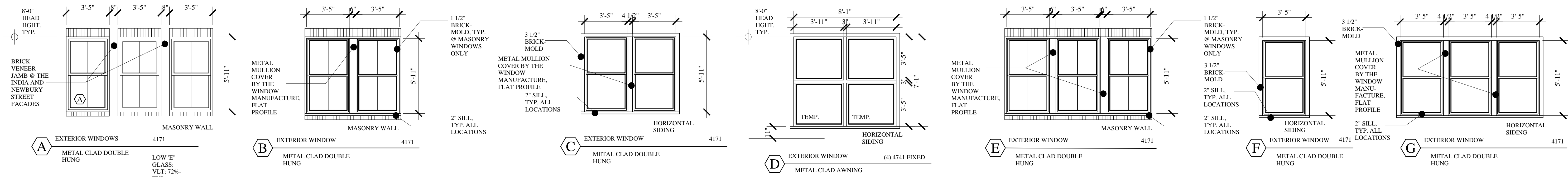
62

I  
N  
D  
I  
A

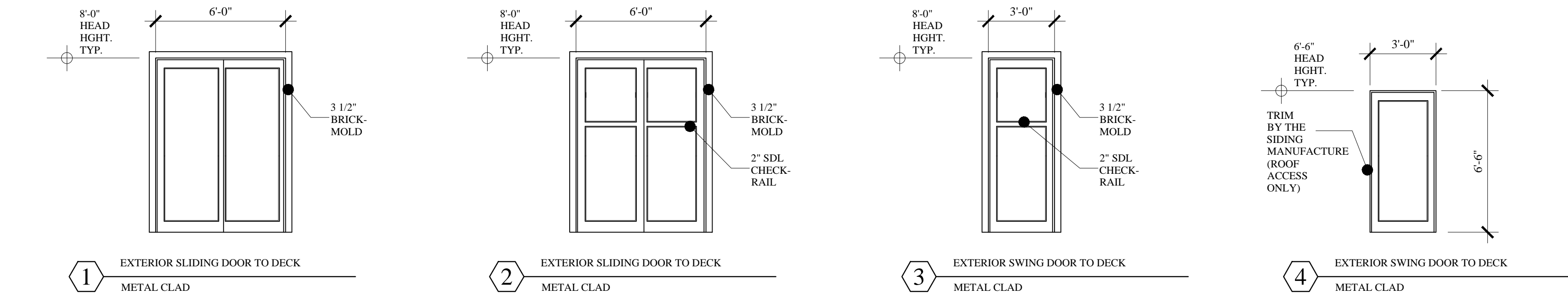
INDIA STREET  
NEIGHBORHOOD  
PORTLAND, MAINE

EXTERIOR WINDOWS  
REVISIONS  
DATE  
JUNE 2016  
PROJECT  
INDIA STREET  
DRAWN BY  
...  
CHECK BY  
MAM

A-2.3



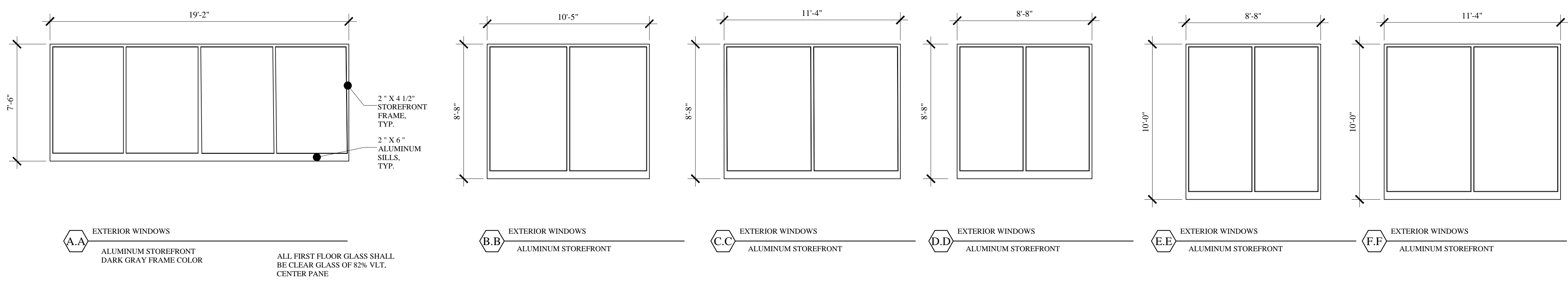
**RESIDENTIAL WINDOWS**



**RESIDENTIAL DOORS**

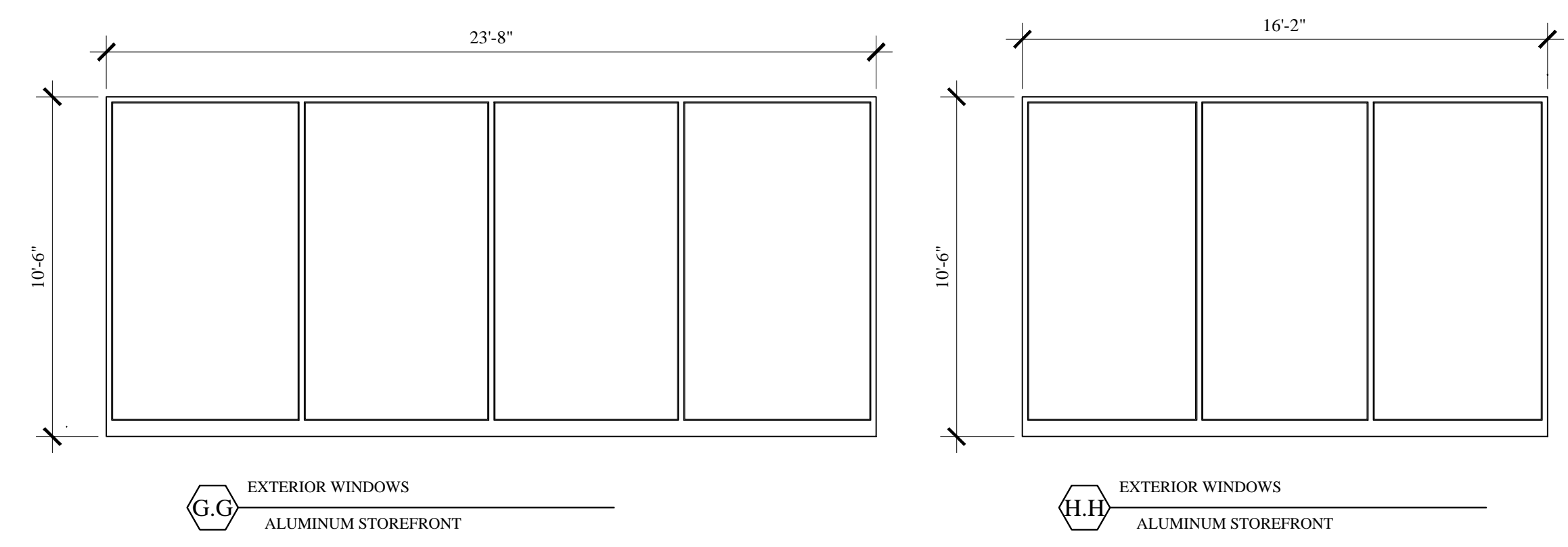
- NOTE:
- ALL RESIDENTIAL WINDOWS SHALL BE THE PELLA PRO-LINE 450 SERIES
  - COLOR:  
INTERIOR: PRE-FINISHED BY PELLA, WHITE  
EXTERIOR: EBONY
  - GRILLS:  
7/8" SDL AS SHOWN ON THE ELEVATIONS, INCLUDE WITH ALUM. SPACER BARS
  - EXTENSION JAMBS:  
4 9/16" EXTENSION JAMBS, FIELD APPLY EXTENSIONS PER VARYING WALL THICKNESS
  - GLAZING  
DUAL-PANE HIGH PERFORMANCE LOW-E GLASS W/ ARGON (272)
  - CASINGS:  
INTERIOR: NO CASING - FIELD APPLIED BY G.C.  
EXTERIOR: EXTERIOR BRICK MOLD CASING AS SHOWN IN THE WINDOW DETAILS
  - SCREENS: (SHIP PACKAGE SEPARATE FROM WINDOWS)  
FGLASS MESH INSECT SCREENS OR EQUAL (MANUF. STANDARD OPTION)
  - HARDWARE:  
COASTAL HARDWARE PACKAGE  
STANDARD STYLE, BRUSHED NICKEL FINISH
  - G.C. TO VERIFY WINDOW R.O. W/ WINDOW SUBMITTAL PRIOR TO CONSTRUCTION.
  - G.C. SHALL SUBMIT WINDOW SPECIFICATIONS FOR APPROVAL PRIOR TO ORDER.
  - ALL WINDOW OPERATIONS SHALL BE PER ARCHITECTURAL ELEVATIONS.
  - ALL WINDOWS 36" FROM ALL MECHANICAL VENTILATION SHALL BE NON-OPERABLE

WINDOWS TO BE INSTALLED BY THE GENERAL CONTRACTOR & INSPECTED BY THE SELECTED WINDOW MANUFACTURE WITH WRITTEN CERTIFICATION SUBMITTED TO THE G.C. & ARCHITECT UPON APPROVAL. ALL WRITTEN REMEDIATION SHALL BE COMPLETED BY THE GENERAL CONTRACTOR AND APPROVED BY THE WINDOW MANUFACTURER.



**MERCANTILE WINDOWS**

- WINDOW NOTES:
- WINDOWS SHALL BE: ALUMINUM CLAD THERMAL BROKEN STOREFRONT SYSTEM
  - MANUFACTURE: NEW CASTLE OR AN APPROVED EQUAL
  - FRAME SIZE: STOREFRONT, 2" X 4 1/2" STANDARD FRAME
  - FRAME COLOR: BLACK OR CHARCOAL GRAY
  - GLAZING: DOUBLE PANE CLEAR GLASS AS NOTED
  - TEMPER GLASS: PER CONDITIONS REQUIRED BY THE "IBC" BUILDING CODE



CONSTRUCTION SET  
NOVEMBER 18, 2016