

**MARK
MUELLER
ARCHITECTS**
A.I.A.
100 Commercial Street
Suite 205
Portland, Maine 04101
Phone: 207.774.9057
Email:
rfi@muellerarchitects.com

© COPYRIGHT 2016
MARK MUELLER ARCHITECTS

62

I
N
D
I
A

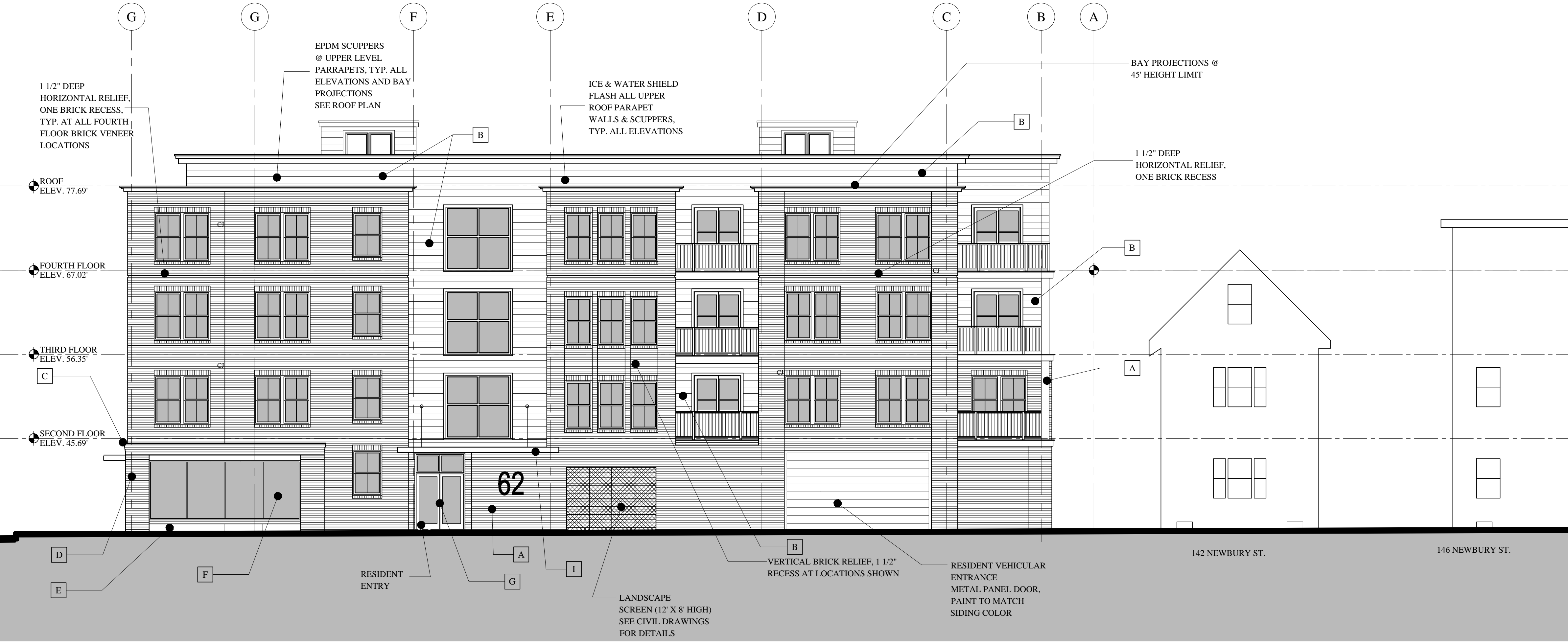
INDIA STREET
NEIGHBORHOOD
PORTLAND, MAINE

BUILDING ELEVATIONS

REVISIONS	DATE
	JUNE 2016
PROJECT	INDIA STREET
DRAWN BY	...
CHECK BY	MAM

A-2.0

- A** BRICK VENEER
'OLD PORT' BLEND, MEDIUM RANGE FLASH BY
MORIN BRICK IN AUBURN MAINE
- B** 10" CEMENTITIOUS SIDING
W/ METAL SIDING CORNERS
- C** BRICK ENTABLATURE:
COURSES: (4) CORBEL
: (2) VERTICAL COURSING
- D** MASONRY PIERS:
BRICK: 'OLD PORT' BLEND
TO MATCH THE MAIN BUILDING
- GRANITE SILL:
E RUNNING: ROCK FACE (MIN. 6' LENGTHS)
THICKNESS: 3"
4" SLOPE CAP: HONED (15° PITCH),
CONTINUOUS LENGTHS
COLOR: DEER ISLE
- F** MIXED USE FACADE FENESTRATION: WINDOWS
MATERIAL: ALUMINUM
FRAMES: 2 1/2" X 4 1/2"
COLOR: CHARCOAL
GLASS: CLEAR, 82% VLT, CENTER SET GLASS
- G** MIXED USE FACADE FENESTRATION: DOORS
SIMILAR TO WINDOWS
DOORS: STYLE AND RAIL TYPE
GLASS: CLEAR, TRANSOMS AND FLANKING GLASS PANEL
- H** RESIDENTIAL WINDOWS:
MANUFACTURE: PELLA
SERIES: 450 PRO-LINE
STYLE: METAL CLAD DOUBLE HUNG W/ SDL
MOULDINGS: METAL
BRICK VENEER- 1 1/2" BRICKMOLD
SIDING: ~3 1/2" BRICKMOLD
SILLS: 2"
GLASS: LOW 'E' 72% VLT, CENTER GLASS
- I** METAL CANOPY:
MATERIAL: ALUMINUM, PRE-WEATHERED GALVALUME
FINISH: PAINTED KYNAR, LOW GLOSS
THICKNESS: 30 MIL.
EXTENTS: (3) SIDES, WOOD FIBER CORE
CEILING SET W/IN METAL FRAME
- J** EXTERIOR DECKS:
GUARDRAILS: ALUM. NEWEL POSTS
AND BALUSTERS
LIGHTING: LOW WALL MOUNT
5 WATT LED FIXTURE, TYP. ALL DECKS
'V' GROOVE VINYL CEILING W/ CLOSURE TRIM (DARK)



NEWBURY STREET ELEVATION
SCALE: 1/8"=1'-0"

- J** EXTERIOR DECKS:
GUARDRAILS: ALUM. NEWEL POSTS
AND BALUSTERS
LIGHTING: LOW WALL MOUNT
5 WATT LED FIXTURE, TYP. ALL DECKS
'V' GROOVE VINYL CEILING W/ CLOSURE TRIM (DARK)

DECKS OUTSIDE THE BUILDING FACADE:
TUBE STEEL FRAME DECK WITH COMPOSITE
DECKING, WELDED TUBE STEEL VERTICAL NEWELS,
INFILL HANDRAIL SYSTEM AND COLOR TO MATCH
THE MAIN BUILDING (TYP. @ SECOND AND THIRD
FLOOR)



INDIA STREET ELEVATION
SCALE: 1/8"=1'-0"

CONSTRUCTION SET
NOVEMBER 18, 2016