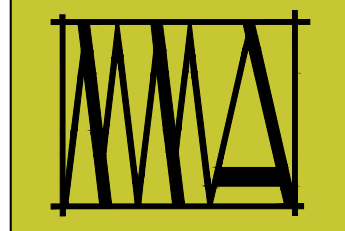
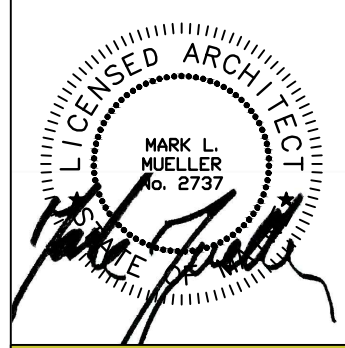


WALL LEGEND

STUD WALL	
CMU WALL	
BRICK WALL	
FIRE RATED WALL	
1/2 HOUR	
1 HOUR	
2 HOUR	



**MARK  
MUELLER  
ARCHITECTS**  
A.I.A.  
100 Commercial Street  
Suite 205  
Portland, Maine 04101  
Phone: 207.774.9057  
Email:  
rfi@muellerarchitects.com

© COPYRIGHT 2016  
MARK MUELLER ARCHITECTS

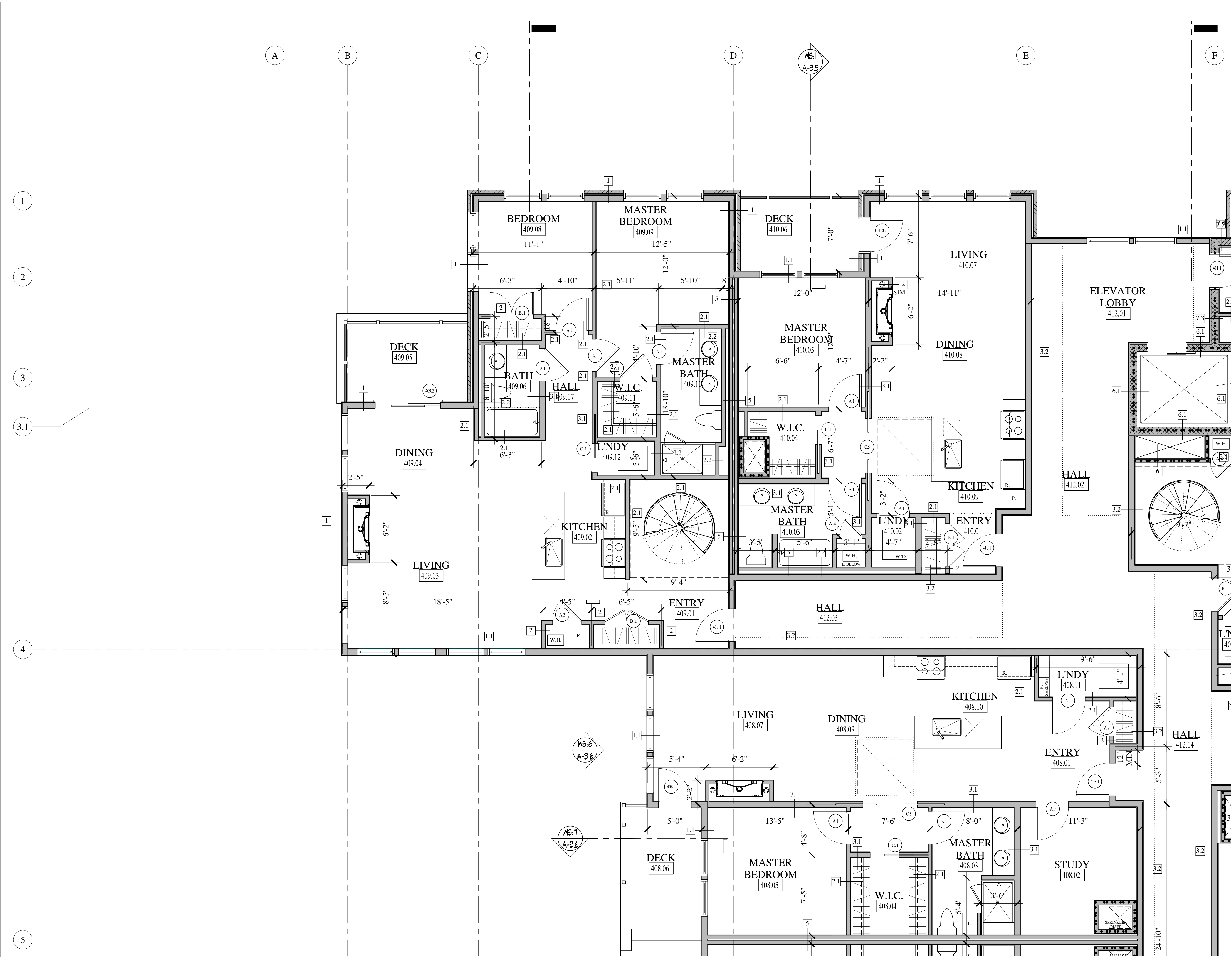
62

I  
N  
D  
I  
A

INDIA STREET  
NEIGHBORHOOD  
PORTLAND, MAINE

PARTIAL FOURTH FLOOR PLAN 'D'

REVISIONS	DATE
	JUNE 2016
PROJECT	INDIA STREET
DRAWN BY	...
CHECK BY	MAM



**PARTIAL FOURTH FLOOR PLAN 'D'**  
SCALE: 1/4"=1'-0"

**CONSTRUCTION SET**  
NOVEMBER 18, 2016

**A-1.21**