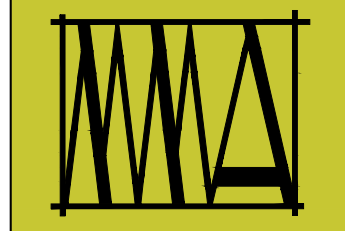
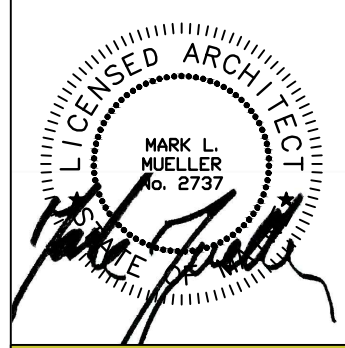


WALL LEGEND

STUD WALL	
CMU WALL	
BRICK WALL	
FIRE RATED WALL	
1/2 HOUR	
1 HOUR	
2 HOUR	



**MARK  
MUELLER  
ARCHITECTS**  
A.I.A.  
100 Commercial Street  
Suite 205  
Portland, Maine 04101  
Phone: 207.774.9057  
Email:  
rfi@muellerarchitects.com

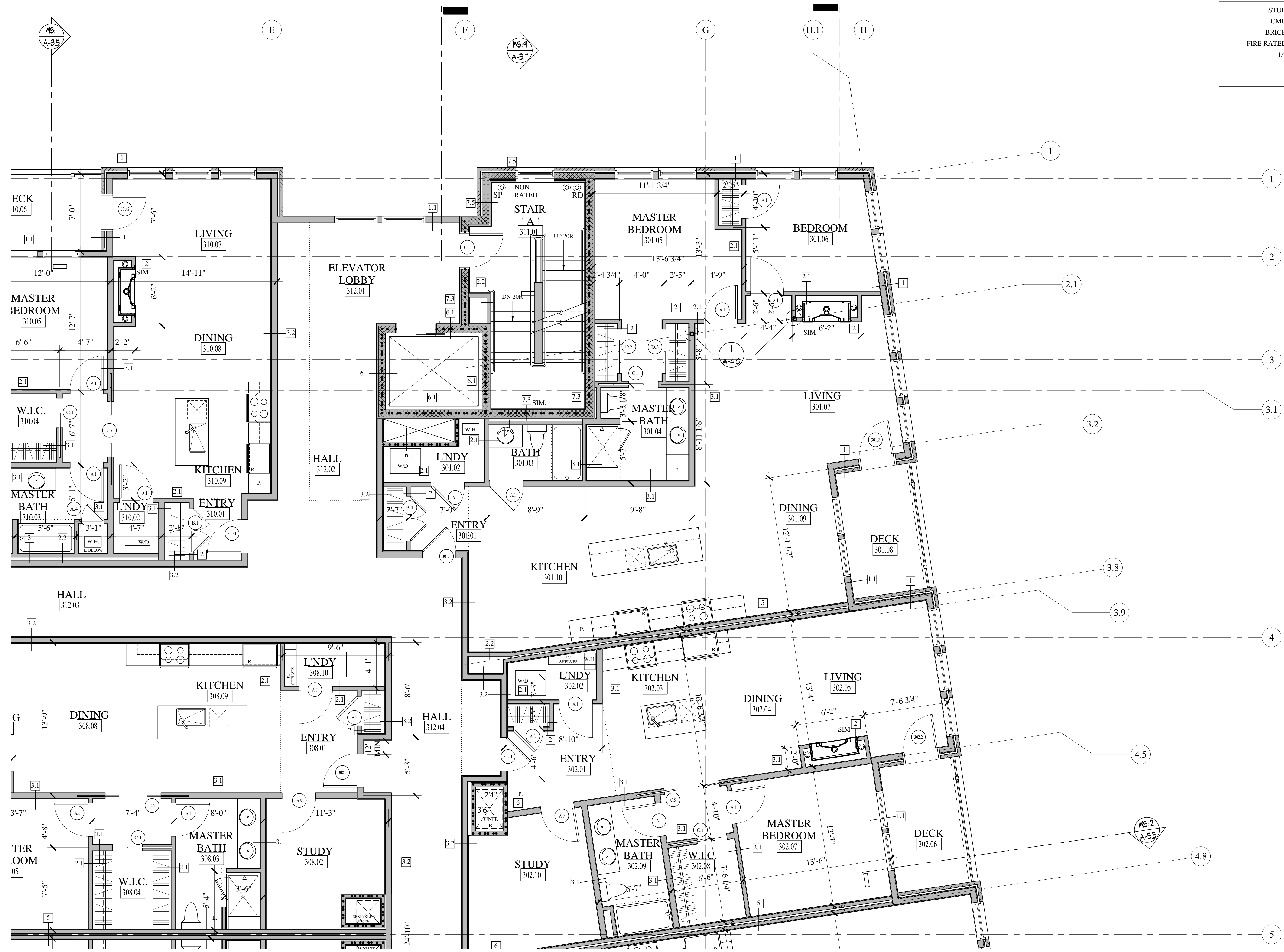
© COPYRIGHT 2016  
MARK MUELLER ARCHITECTS

**62**

**I  
N  
D  
I  
A**

INDIA STREET  
NEIGHBORHOOD  
PORTLAND, MAINE

PARTIAL THIRD FLOOR PLAN 'A'  
REVISIONS  
DATE: JUNE 2016  
PROJECT: INDIA STREET  
DRAWN BY: ...  
CHECKED BY: MAM



**PARTIAL THIRD FLOOR PLAN 'A'**  
SCALE: 1/4"=1'-0"

**CONSTRUCTION SET**  
NOVEMBER 18, 2016  
**A-1.14**