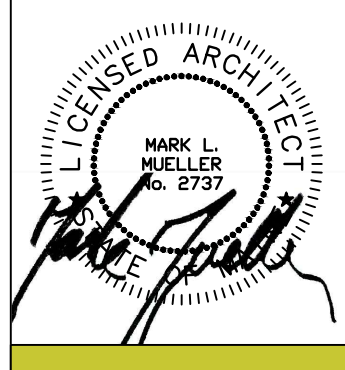


WALL LEGEND

STUD WALL	
CMU WALL	
BRICK WALL	
FIRE RATED WALL	
1/2 HOUR	
1 HOUR	
2 HOUR	



**MARK
MUELLER
ARCHITECTS**
A.I.A.
100 Commercial Street
Suite 205
Portland, Maine 04101
Phone: 207.774.9057
Email:
rfi@muellerarchitects.com

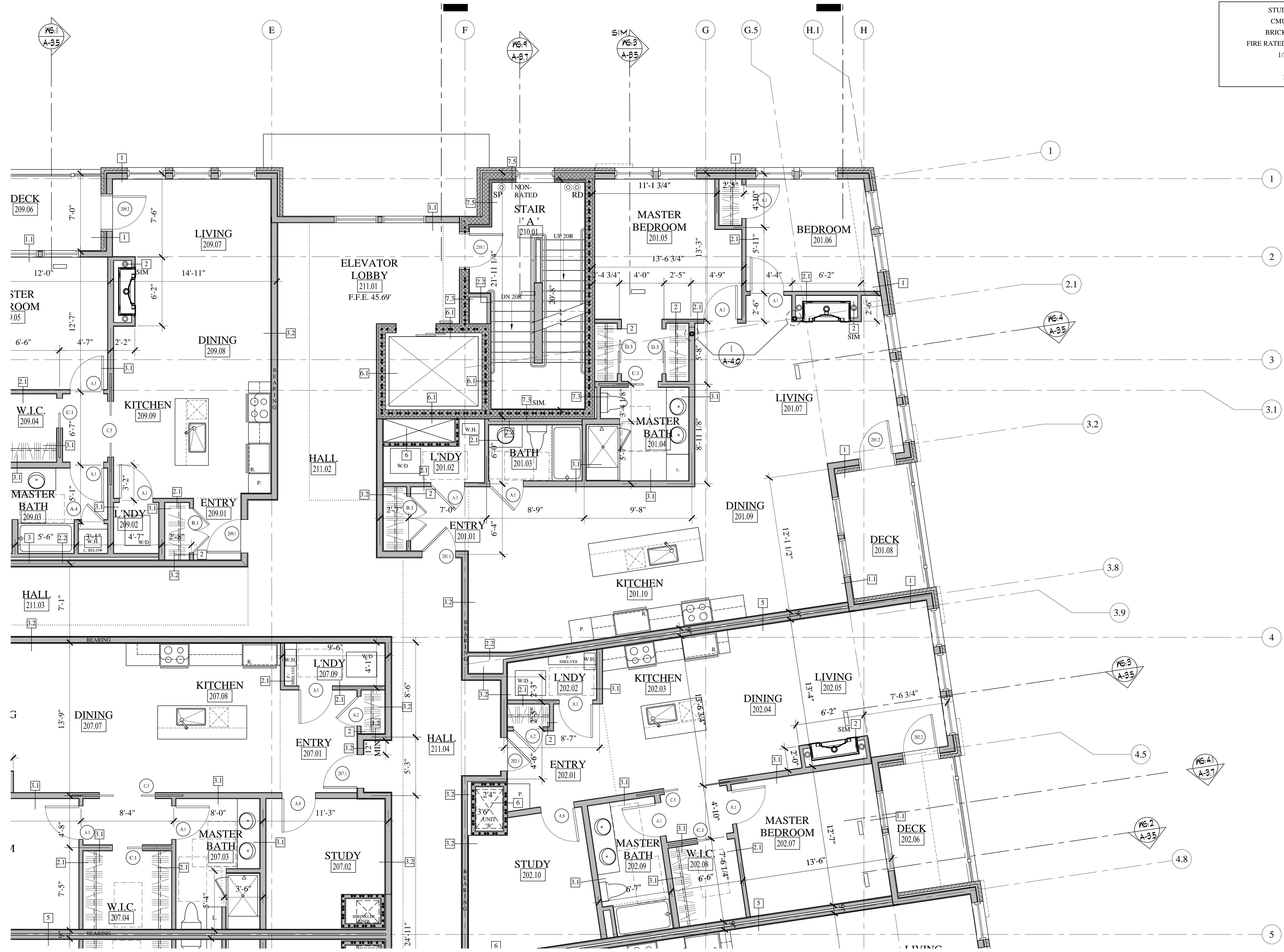
© COPYRIGHT 2016
MARK MUELLER ARCHITECTS

62

**I
N
D
I
A**

INDIA STREET
NEIGHBORHOOD
PORTLAND, MAINE

PARTIAL SECOND FLOOR PLAN 'A'
REVISIONS
DATE: JUNE 2016
PROJECT: INDIA STREET
DRAWN BY: ...
CHECKED BY: MAM



PARTIAL SECOND FLOOR PLAN 'A'
SCALE: 1/4"=1'-0"

CONSTRUCTION SET
NOVEMBER 18, 2016
A-1.10