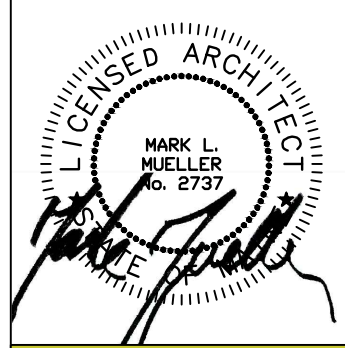


WALL LEGEND

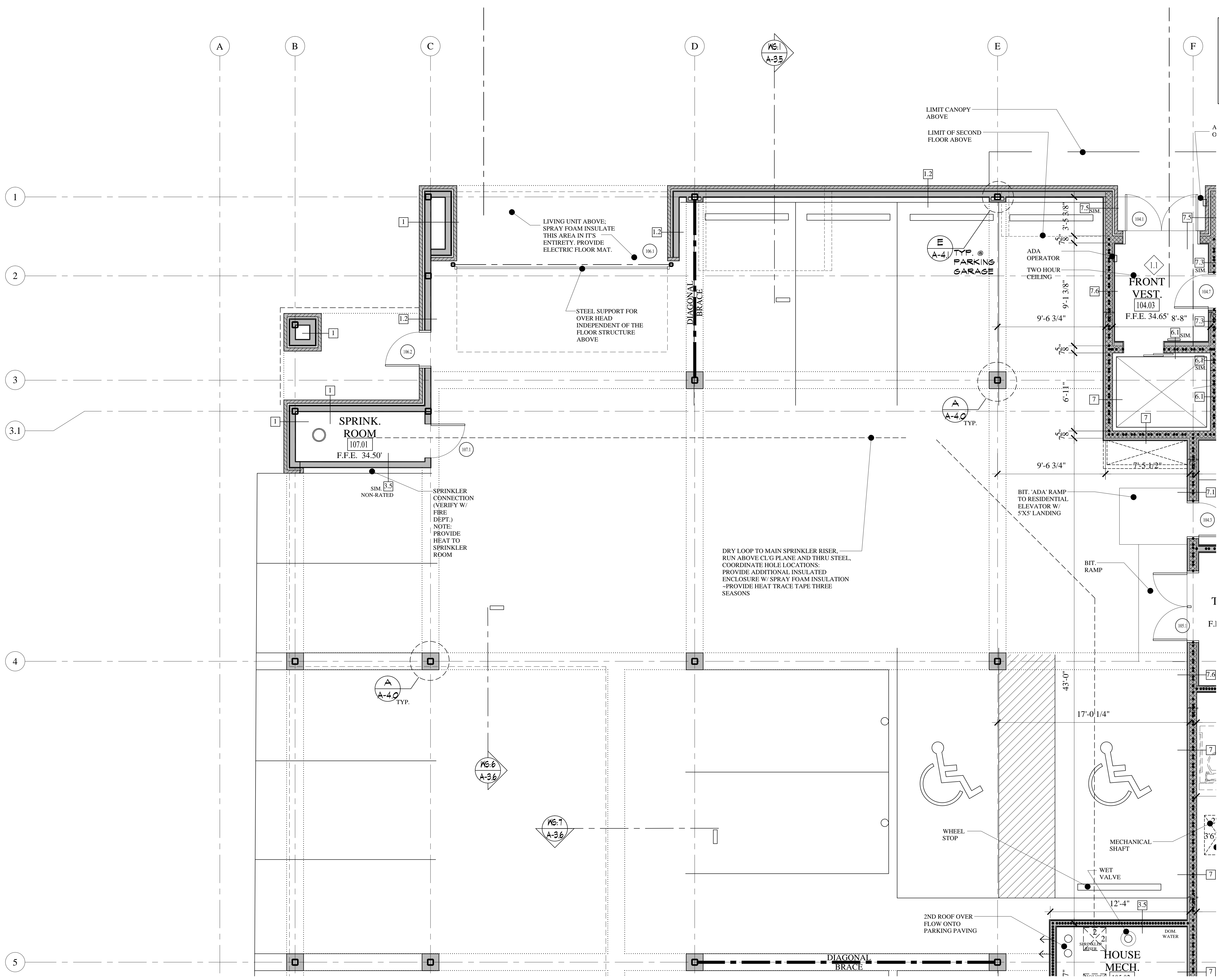
STUD WALL	
CMU WALL	
BRICK WALL	
FIRE RATED WALL	
1/2 HOUR	
1 HOUR	
2 HOUR	



**MARK
MUELLER
ARCHITECTS**
A.I.A.
100 Commercial Street
Suite 205
Portland, Maine 04101
Phone: 207.774.9057
Email:
rfi@muellerarchitects.com

© COPYRIGHT 2016
MARK MUELLER ARCHITECTS

62
**I
N
D
I
A**
INDIA STREET
NEIGHBORHOOD
PORTLAND, MAINE



PARTIAL FIRST FLOOR PLAN 'D'
SCALE: 1/4"=1'-0"

CONSTRUCTION SET
NOVEMBER 18, 2016

PARTIAL FIRST FLOOR PLAN 'D'

REVISIONS	DATE
	JUNE 2016
PROJECT	INDIA STREET
DRAWN BY	...
CHECKED BY	MAM

A-1.9