

**MARK  
MUELLER  
ARCHITECTS**  
A.I.A.  
100 Commercial Street  
Suite 205  
Portland, Maine 04101  
Phone: 207.774.9057  
Email:  
rfi@muellerarchitects.com

© COPYRIGHT 2016  
MARK MUELLER ARCHITECTS

**62**

**I  
N  
D  
I  
A**

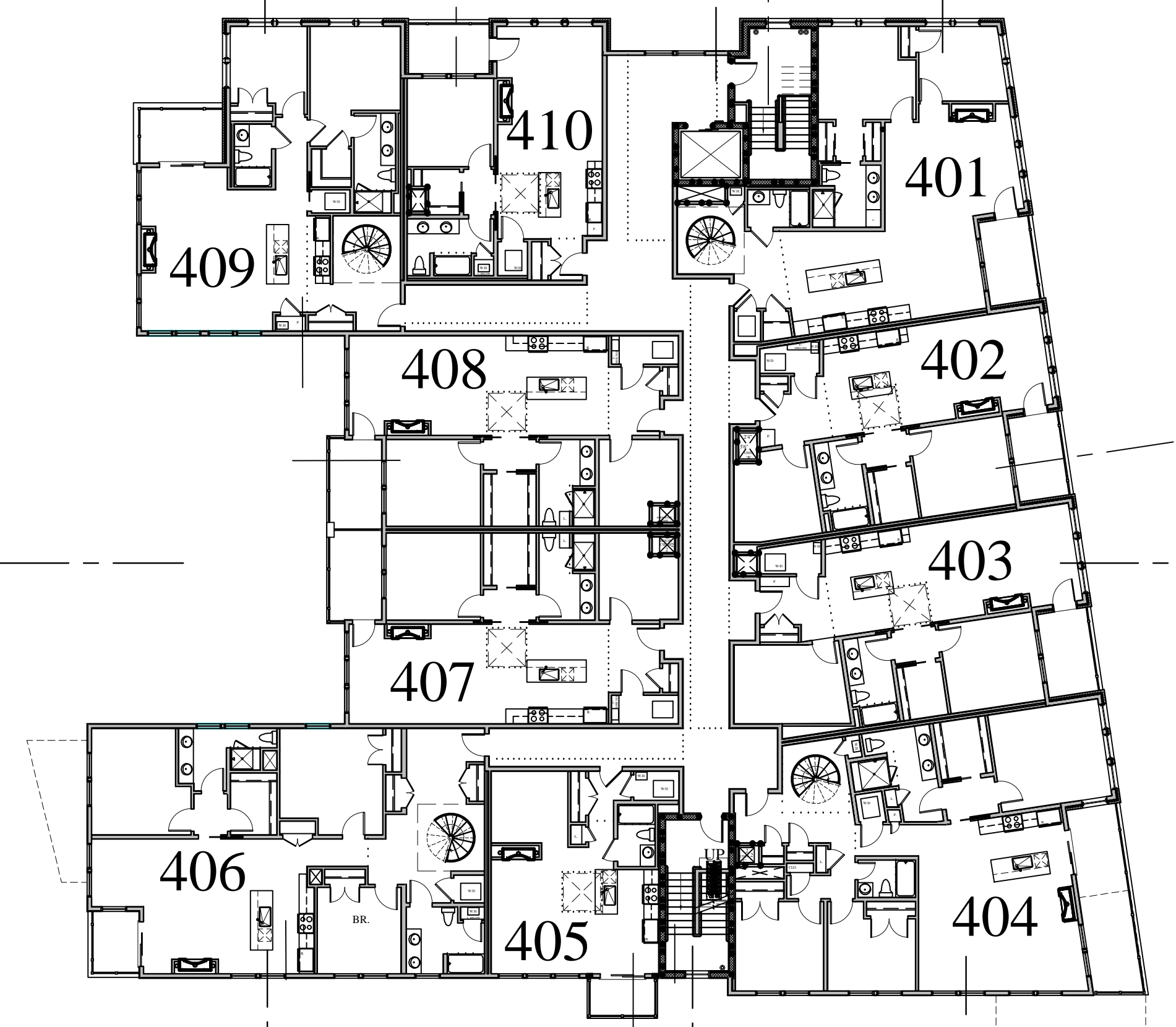
INDIA STREET  
NEIGHBORHOOD  
PORTLAND, MAINE

**KEY PLAN**

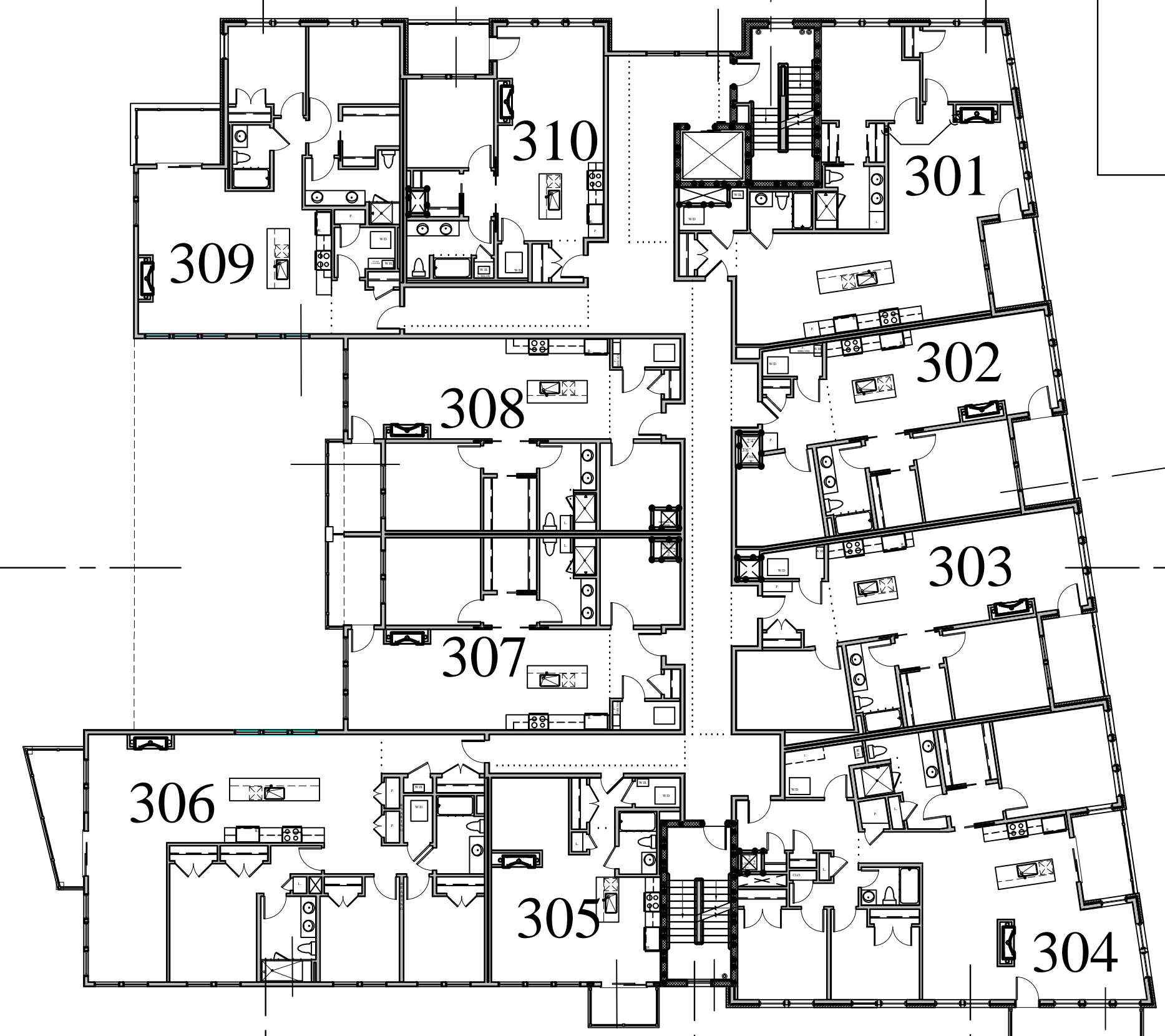
REVISIONS	DATE
	JUNE 2016
PROJECT	INDIA STREET
DRAWN BY	...
CHECK BY	MJM

**WALL LEGEND**

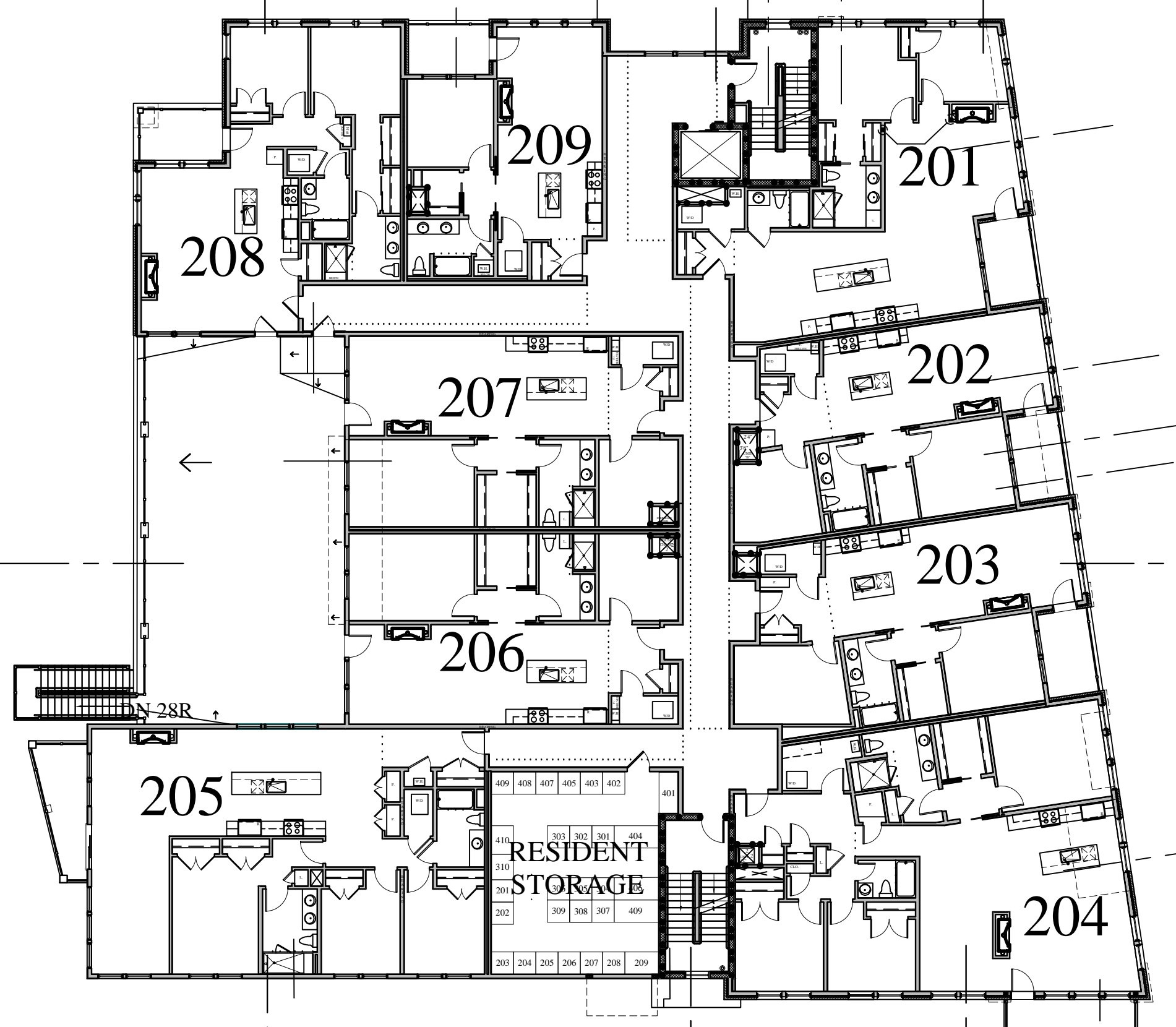
STUD WALL	
CMU WALL	
BRICK WALL	
FIRE RATED WALL	
1/2 HOUR	
1 HOUR	
2 HOUR	



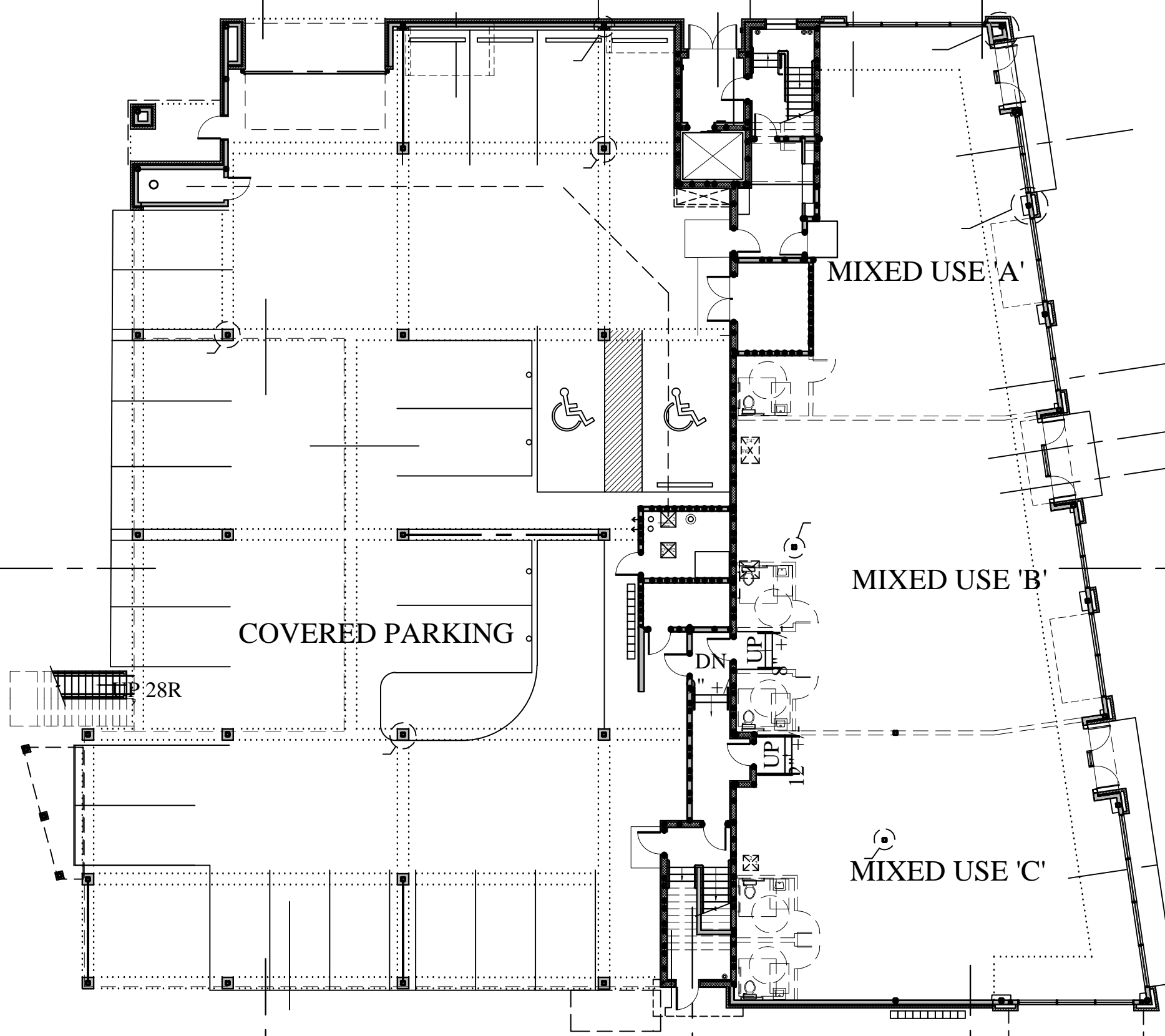
**FOURTH FLOOR PLAN**  
SCALE: 1/16"=1'-0"



**THIRD FLOOR PLAN**  
SCALE: 1/16"=1'-0"



**SECOND FLOOR PLAN**  
SCALE: 1/16"=1'-0"



**FIRST FLOOR PLAN**  
SCALE: 1/16"=1'-0"

**CONSTRUCTION SET**  
NOVEMBER 18, 2016

**A-1.0**