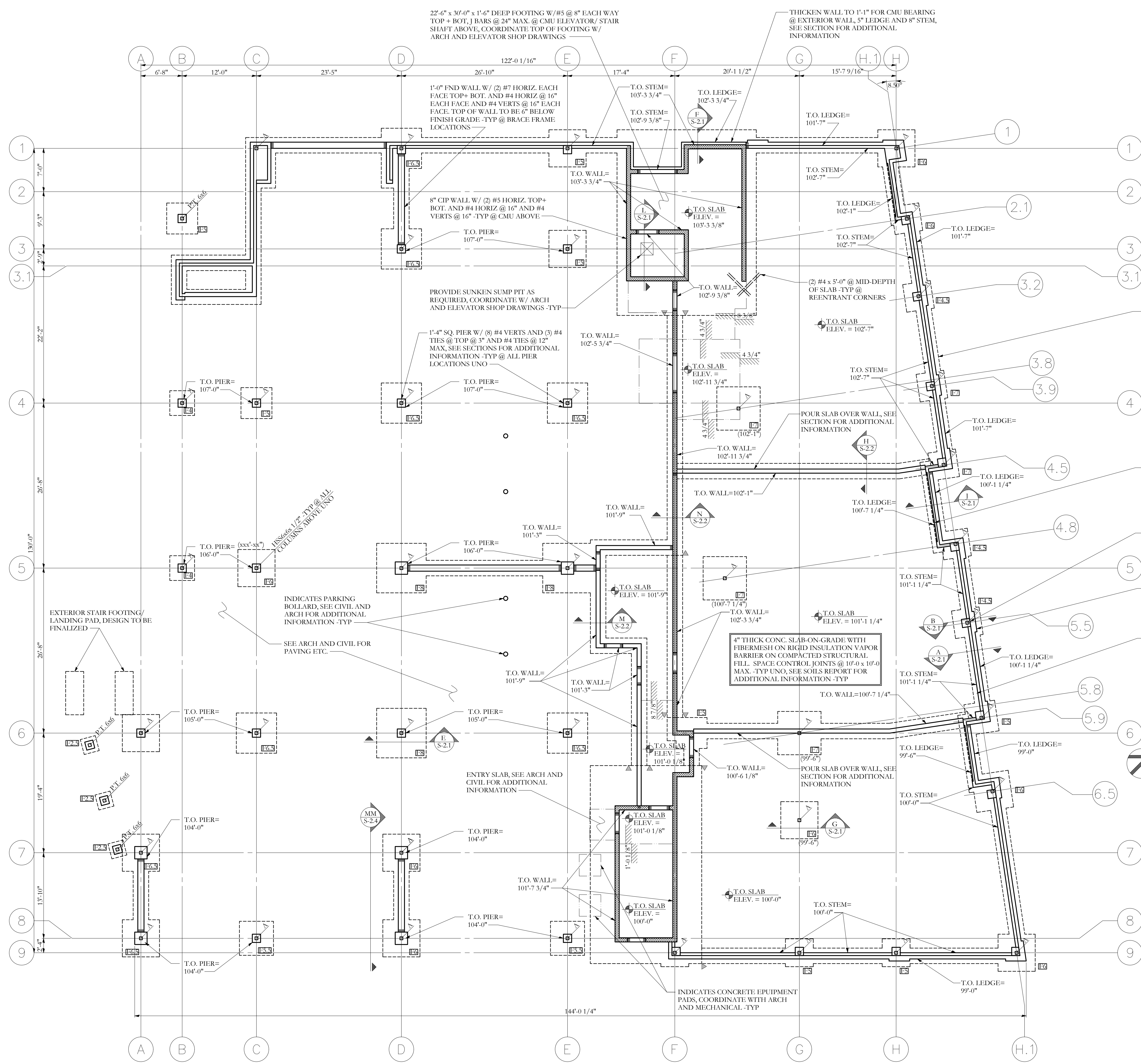


COPYRIGHT: Reuse or reproduction of the contents of this document is not permitted without written permission of Structural Integrity Consulting Engineers, Inc.



FOOTING SCHEDULE		
MARK	SIZE	REINFORCING
C2.5	12" D x 2'-6" W x CONT.	(3) #4 CONT. LONG. W/ #4 TRANSVERSE @ 32"
P2.5	2'-6" x 2'-6" x 1'-0" D	(3) #5 EACH WAY
F3	3'-0" x 3'-0" x 1'-0" D	(3) #5 EACH WAY
F4	4'-0" x 4'-0" x 1'-0" D	#5 @ 12" EACH WAY TOP + BOTTOM
F4.5	4'-6" x 4'-6" x 1'-0" D	#5 @ 12" EACH WAY TOP + BOTTOM
F5	5'-0" x 5'-0" x 1'-3" D	#5 @ 12" EACH WAY TOP + BOTTOM
F5.5	5'-6" x 5'-6" x 1'-3" D	#5 @ 12" EACH WAY TOP + BOTTOM
F6	6'-0" x 6'-0" x 1'-3" D	#5 @ 12" EACH WAY TOP + BOTTOM
F6.5	6'-6" x 6'-6" x 1'-3" D	#5 @ 12" EACH WAY TOP + BOTTOM
F7	7'-0" x 7'-0" x 1'-6" D	#5 @ 12" EACH WAY TOP + BOTTOM
F8	8'-0" x 8'-0" x 1'-6" D	#5 @ 12" EACH WAY TOP + BOTTOM

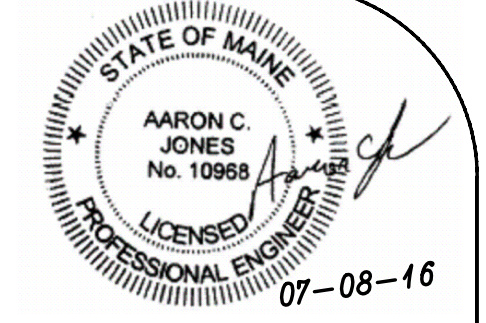
NOTE: COORDINATE ALL IN SLAB PLUMBING ETC. W/ ARCH AND MECHANICAL DRAWINGS -TYP

NOTE: BUILD ALL INTERIOR PARTITION WALLS IN CONTACT WITH SLAB W/ P.T. 2x BOTTOM PLATES. FASTEN TO SLAB W/ 5/16" @ 32" MAX -TYP

ALL FOOTINGS TO BEAR ON IMPROVED SUB-GRADE PER SOILS REPORT. GEOTECHNICAL ENGINEER TO APPROVE SUB-GRADE IMPROVEMENTS PRIOR TO FOOTING PLACEMENT. ALSO SEE GENERAL NOTES.

**FOUNDATION/ SLAB PLAN**  
 SCALE 1/8"=1'-0"

NOTES:  
 1. ALL FOOTINGS ARE 10" DEEP x 2'-6" WIDE x CONT. WITH (4) #4 BARS LONGITUDINAL AND #4 TRANSVERSE BARS @ 32" UNO  
 2. STEP IN TOP OF WALL IS INDICATED THUS:  $\nabla$  AND SHOWS LOWER SIDE OF WALL  
 3. STEP IN TOP OF FOOTING IS INDICATED THUS:  $\blacktriangleright$  AND SHOWS LOWER FOOTING.  
 4. TOP OF FOOTING ELEV.=, UNLESS INDICATED THUS: (XXX'-XX"), COORDINATE BOTTOM OF FOOTING ELEVATION W/ GRADING PLAN AND SOILS REPORT REQUIREMENTS  
 5. BOTTOM OF ALL FOOTINGS TO BE 4'-6" MIN BELOW EXTERIOR GRADE -TYP UNO  
 6. TOP OF WALL ELEV.=VARIES, INDICATED THUS: T.O. WALL=xxx'-xx"  
 7. SEE S-1.0 FOR STRUCTURAL GENERAL NOTES  
 8. TOP OF PILASTER ELEV.=VARIES, INDICATED THUS: T.O. PILASTER= xx'-xx"  
 9. TOP OF EXTERIOR MASONRY LEDGE ELEV.=VARIES, INDICATED THUS: T.O. LEDGE=xx'-x"  
 11. SEE CIVIL FOR END DRAIN INFORMATION -TYP  
 12. COORDINATE ALL DIMENSIONS, WALL, LEDGE, PIER, AND SLAB ELEVATIONS W/ ARCH AND SITE DRAWINGS -TYP



77 Oak Street  
 Portland, ME 04101  
 P: 207-774-4614  
 F: 866-793-7635  
 www.structuralintegrity.com  
 BUILD WITH CONFIDENCE  
 © 2016 Structural Integrity Consulting Engineers, Inc.

**Structural Integrity**  
 Consulting Engineers

OWNER  
**INDIA/ NEWBURY RESIDENCES, LLC.**  
 PROJECT NAME  
**62 INDIA ST**  
 Portland, Maine

DRAWN BY  
**JCS**  
 SHEET TITLE  
**FOUNDATION/ FIRST FLOOR PLAN**

ISSUE DATE  
**07.08.16**  
 SHEET SCALE  
**1/8"=1'-0"**

**S-1.1**  
 PROJECT NO.  
**16-0022**

**FOUNDATION ONLY**  
**PERMIT SET**