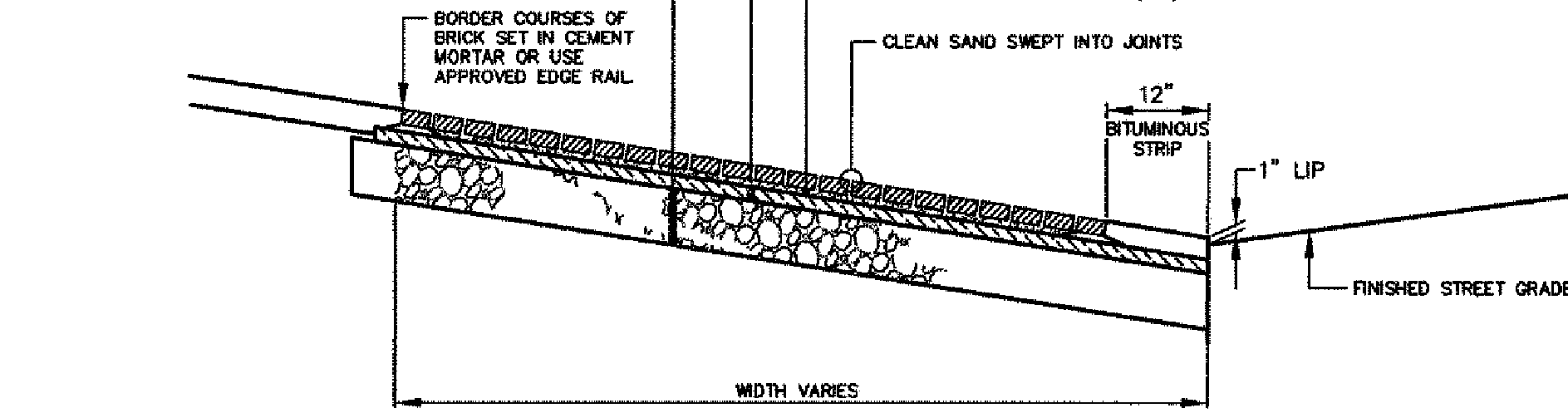
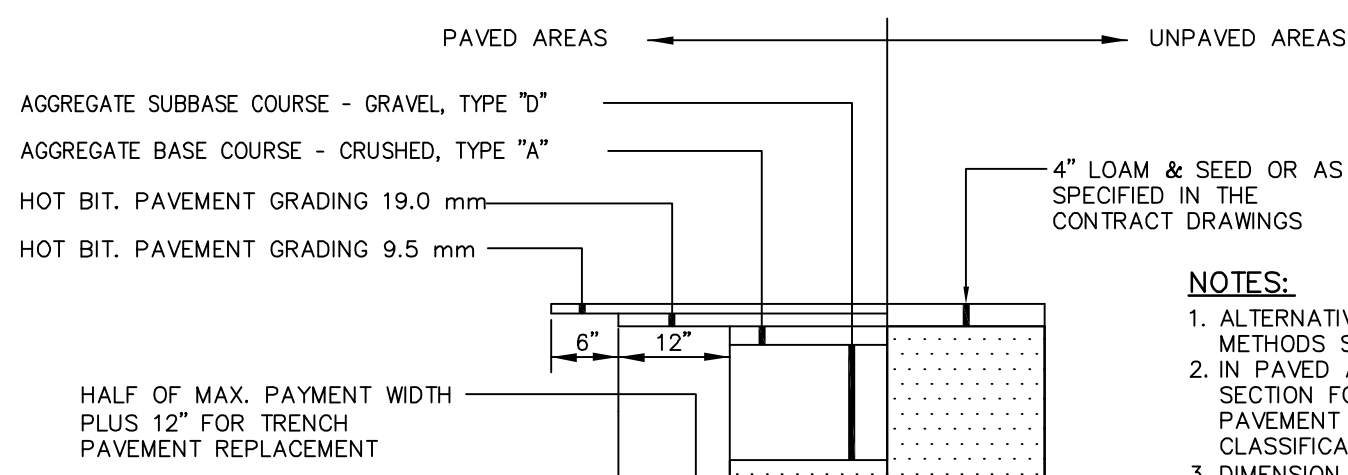


**BRICKS TO BE USED:**  
NEW CONSTRUCTION  
4"x8" PINE HALL PATHWAY PAVEMENT BRICK, MFG. BY PINE HALL BRICK CO., MADISON NORTH CAROLINA, LACHAR ITEM # 193623, PINE HALL PATHWAY PAVEMENT BRICK.

**REPAIR/MAINTENANCE TO EXISTING BRICK SIDEWALKS:**  
VERMONT PAVER, SUPPLIED BY GAGNE AND SONS, SPECIFICATION NUMBER: "VERMONT BACKER BRICK", ITEM NUMBER # VBBB

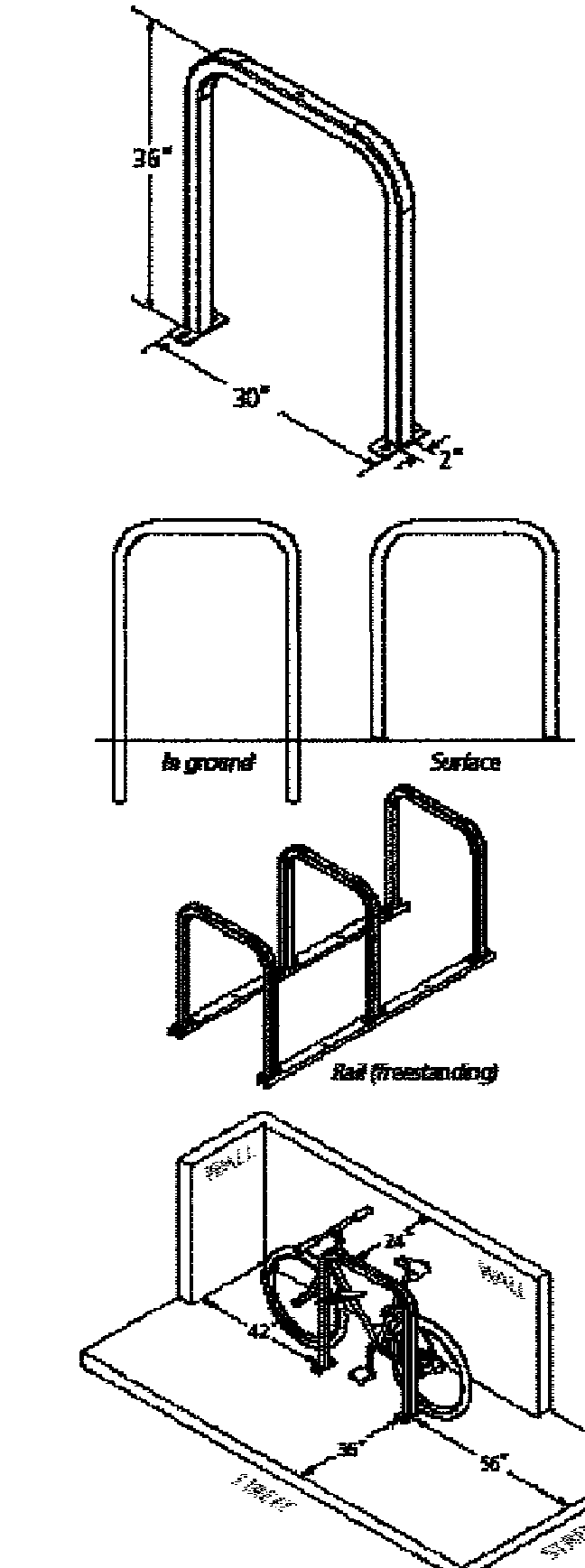


**BRICK DRIVEWAY APRON WITH BITUMINOUS BASE**  
NOT TO SCALE



- NOTES:**
- ALTERNATIVE CONSTRUCTION METHODS OR PAYMENT METHODS SHALL BE APPROVED IN ADVANCE BY THE CITY.
  - IN PAVED AREAS REFER TO BITUMINOUS PAVEMENT SECTION FOR DEPTHS OF GRAVEL AND HOT MIX ASPHALT PAVEMENT BASED ON THE CORRESPONDING STREET CLASSIFICATION.
  - DIMENSION "B" SHALL BE SUFFICIENT TO ALLOW CRUSHED STONE BEDDING TO BE PLACED AND COMPACTED UNDER THE HAUNCHES OF THE PIPE; BUT IN ALL CASES "B" SHALL BE AT LEAST 9".
  - DIMENSION "A" IS THE MAXIMUM WIDTH ALLOWED FOR CALCULATING PAY QUANTITIES UNDER GRANULAR BORROW, CRUSHED STONE, STRUCTURAL EARTH EXCAVATION, AND STRUCTURAL ROCK EXCAVATION. DIMENSION "A" SHALL BE BASED ON PIPE DIAMETER "D", AS SET FORTH IN THE FOLLOWING TABLE.

PIPE DIAMETER, "D" (INCHES)	MAX. TRENCH WIDTH, "A" (FEET)
4	4.0
6	4.0
8	4.0
10	4.0
12	4.0
18	4.0
24	5.0
27	6.0
30	6.0
36	7.0
42	8.0
48	8.0



**Product:** Dura Downrow Rack  
As manufactured by Dura Bike Racks

**Capacity:** 2 Bikes

**Material:** 2" x 2" x 3/16" tube

**Finish:** An after-market black dipped galvanized finish is standard. 250 TSP powder coat finish, a thermoplastic coating and a stainless steel option are also available.

**Our powder coat finish** ensures a high level of adhesion and durability by following these steps:  
1. Sandblast  
2. Zinc phosphate pretreatment  
3. Epoxy primer electrocoat application  
4. Final black TSP polyester powder coat

**Stainless Steel:** 304 grade stainless steel material finished in either a high polished shine or a satin finish.

**A rubbery PVC Dip is also available.**

**Installation Methods:**

**Wall Setbacks:**  
For racks set parallel to a wall:  
Minimum: 24"  
Recommended: 36"

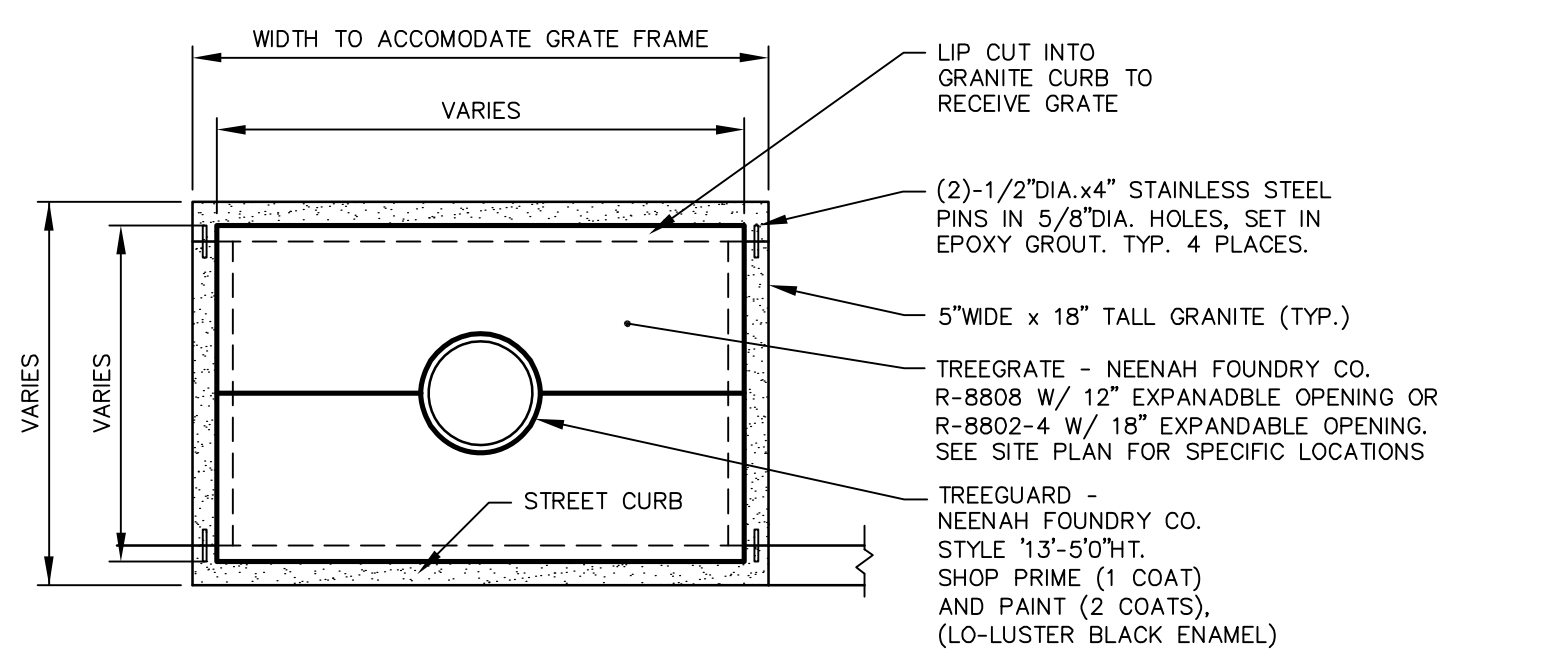
**For racks set perpendicular to a wall:**  
Minimum: 20"  
Recommended: 42"

**Distance Between Racks:**  
Minimum: 24"  
Recommended: 36"

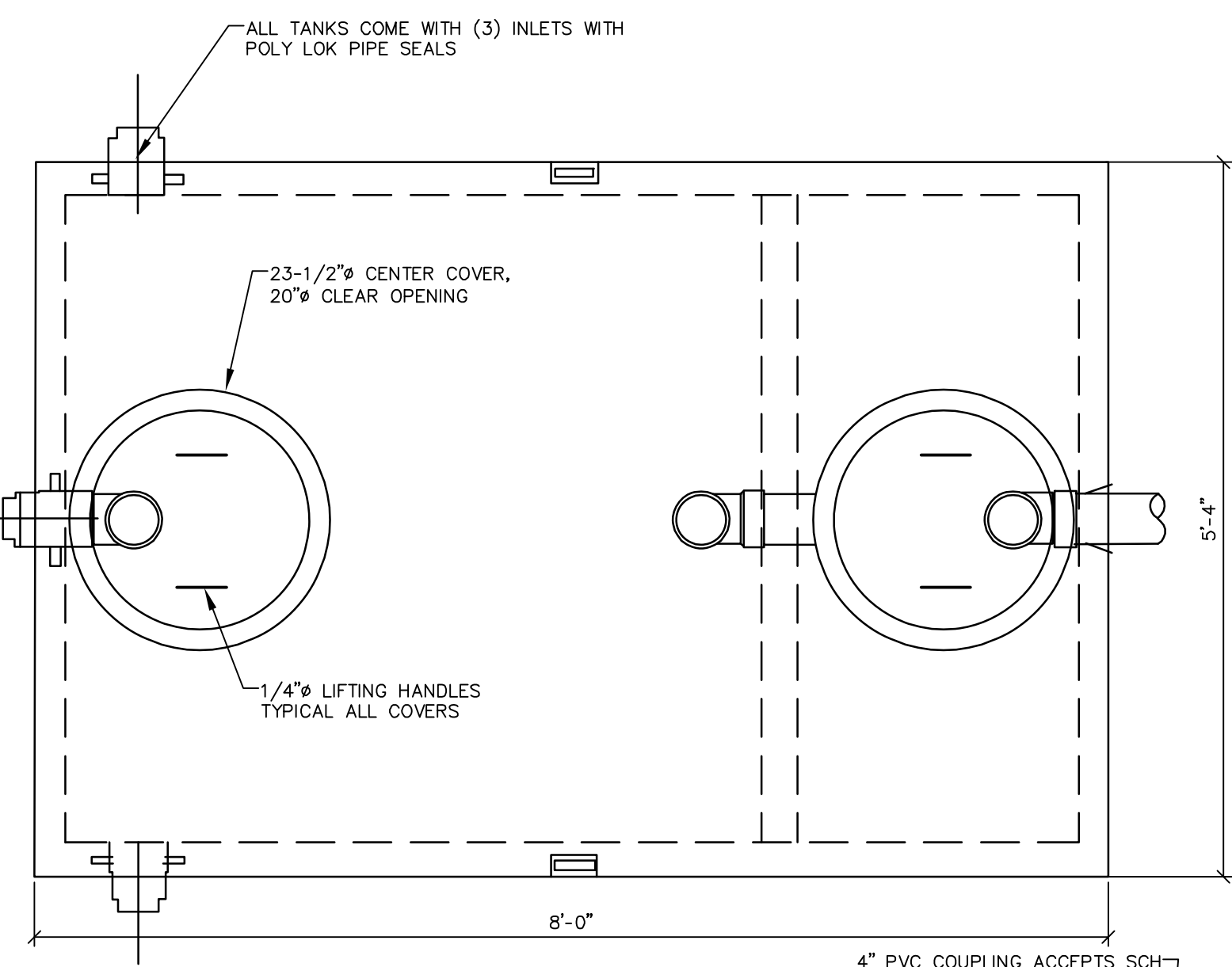
**Street Setbacks:**  
Minimum: 24"  
Recommended: 36"

**BIKE RACK DETAIL**  
NOT TO SCALE

**SEWER MANHOLE DOGHOUSE STRUCTURE**  
NOT TO SCALE

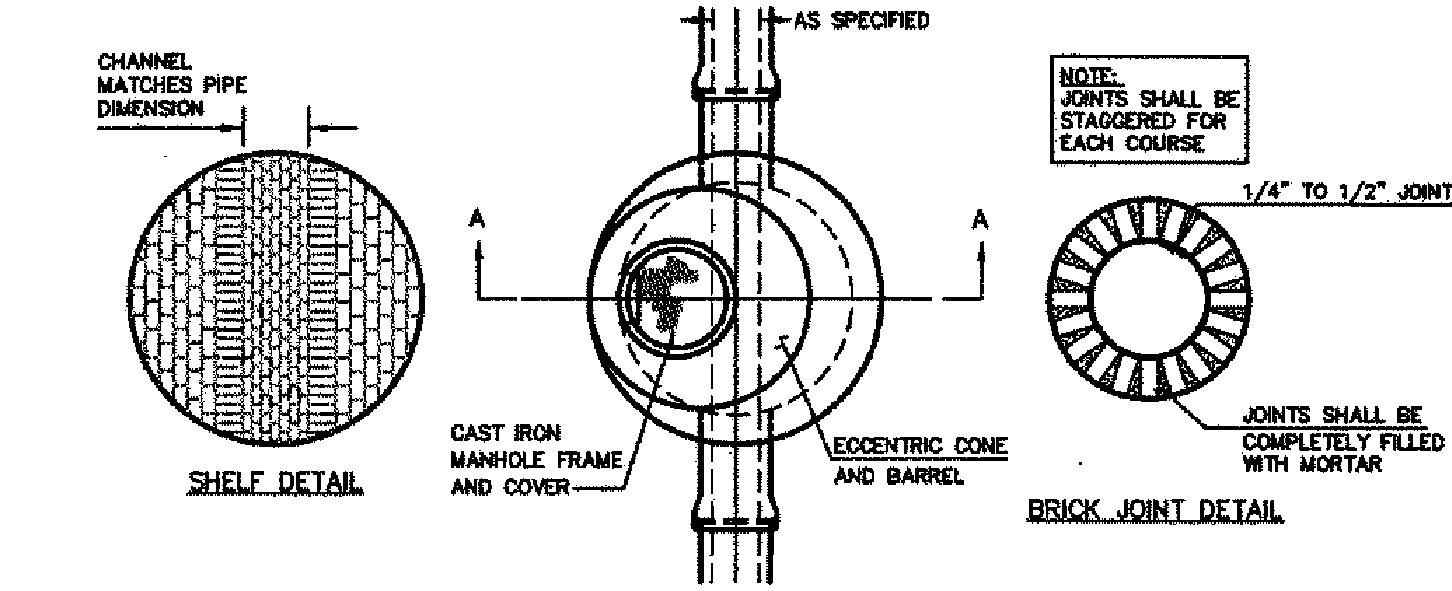


**TREE GRATE DETAIL**  
NOT TO SCALE

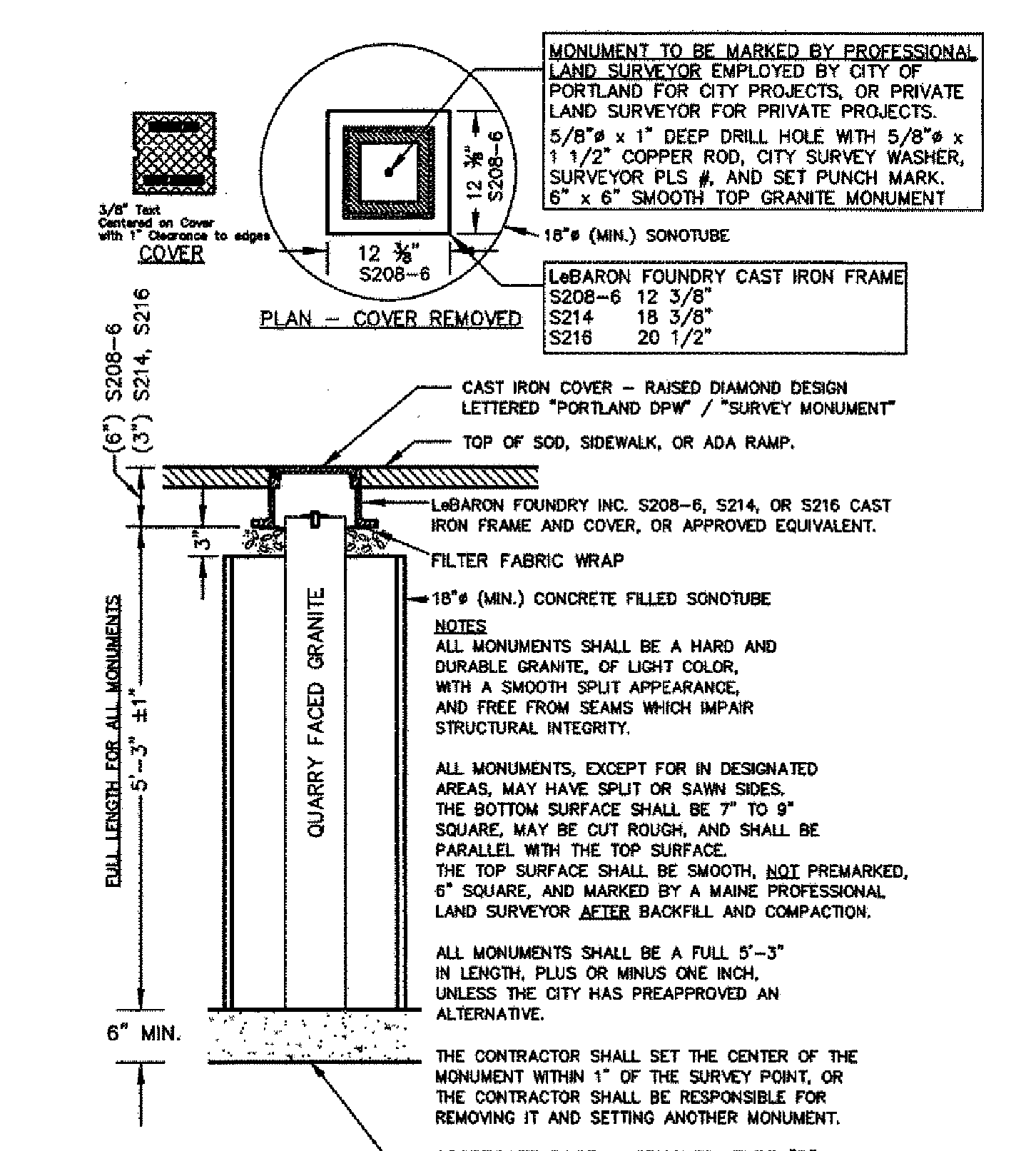


**1000 GALLON GREASE TRAP**  
NOT TO SCALE

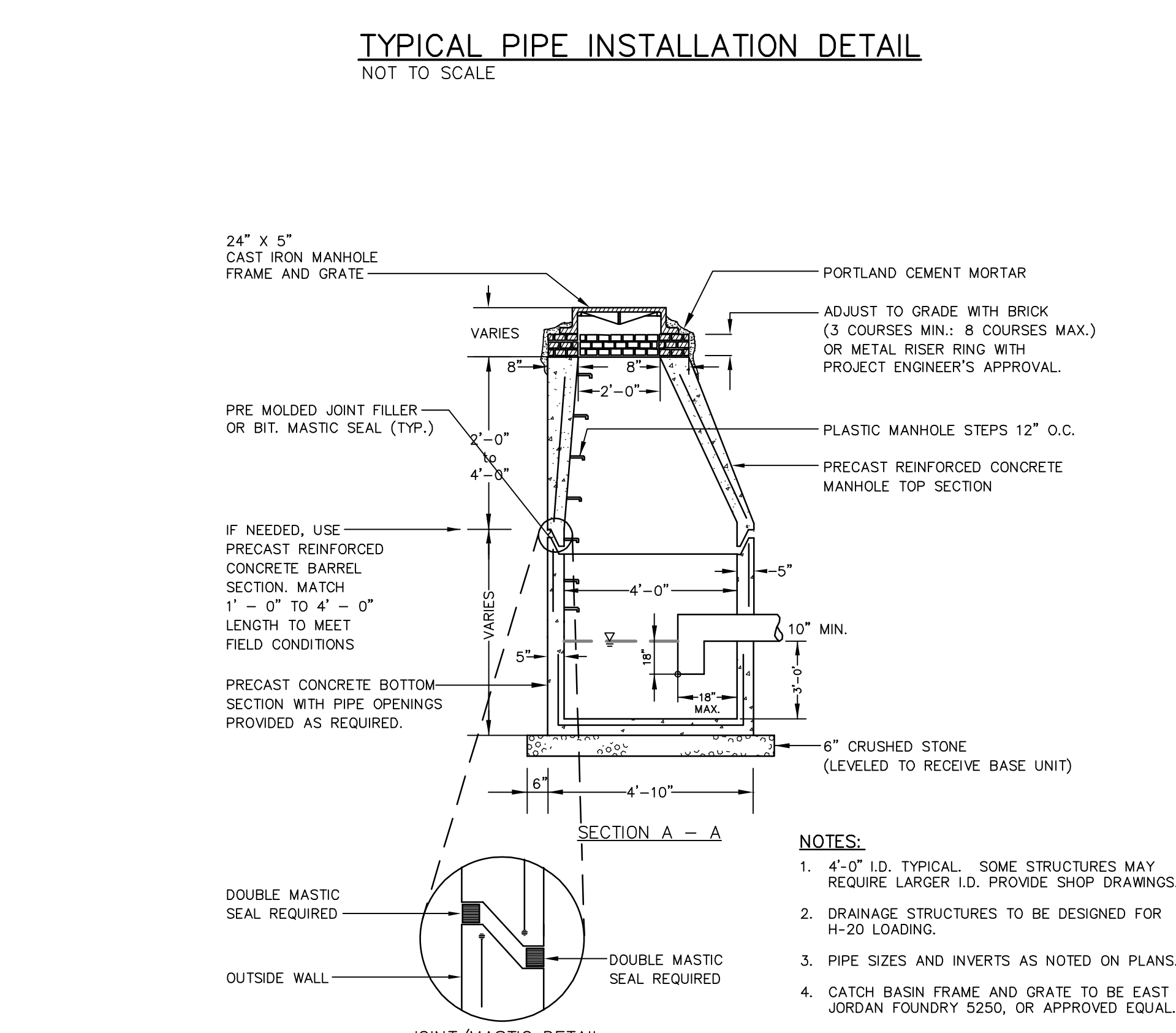
- CONCRETE SPECIFICATIONS:**
- 4000 PSI @ 28 DAYS
  - 4% - 5% EXTRA DRAIN AIR
  - TANK PENETRATIONS ARE INTEGRALLY CAST
  - ALL JOINTS SEALED WITH BUTYL RUBBER JOINT SEALANT
- GREASE TRAP INFORMATION:**
- TANKS SHOULD BE PUMPED AS NEEDED
  - ACCESS COVERS SHOULD HAVE RISERS TO BEING COVER ACCESS TO GRADE.
  - TANKS CAN BE VACUUM TESTED AT AN ADDITIONAL COST.



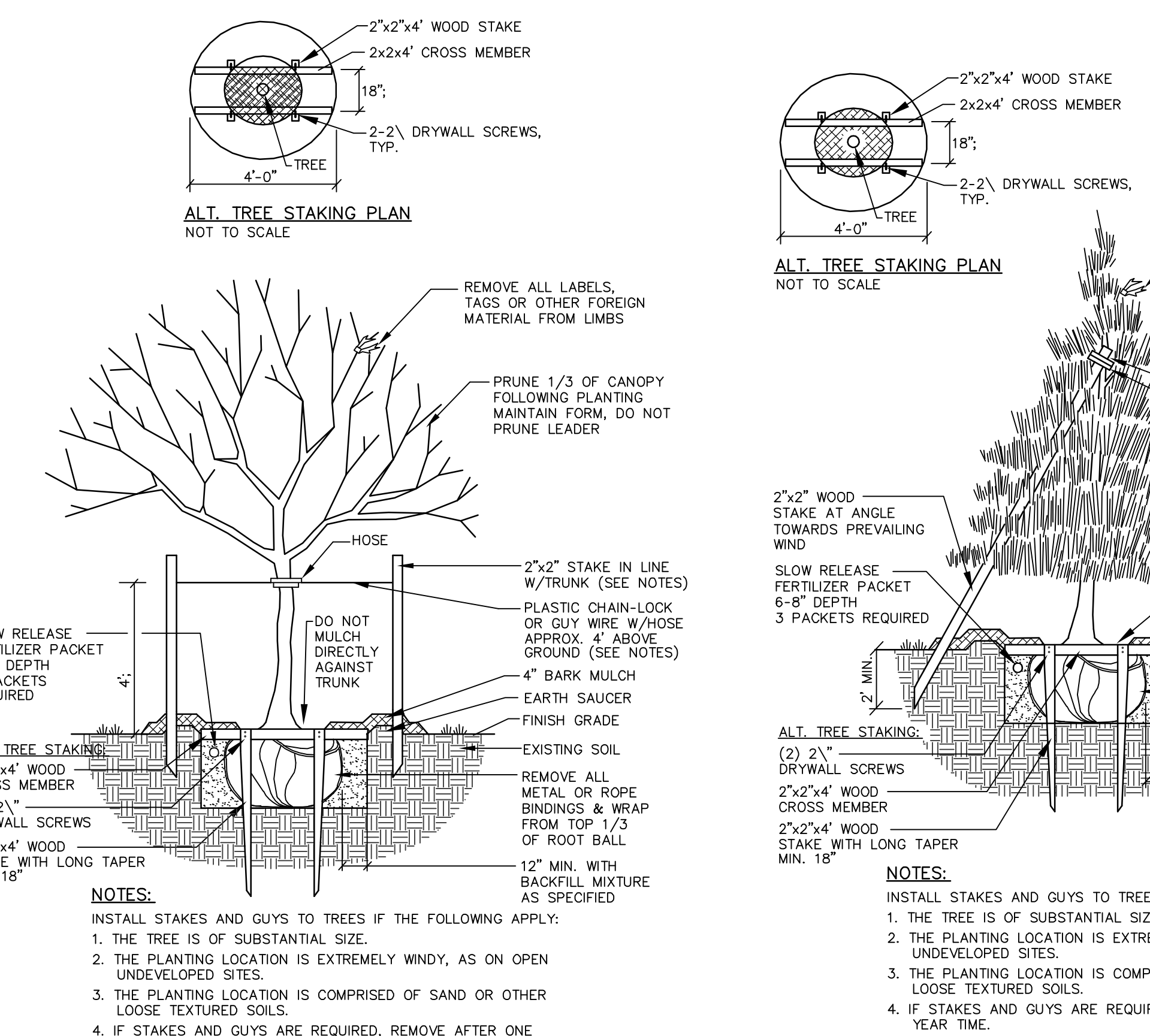
**PRECAST CONCRETE MANHOLE**  
NOT TO SCALE



**GRANITE STREET MONUMENT**  
NOT TO SCALE

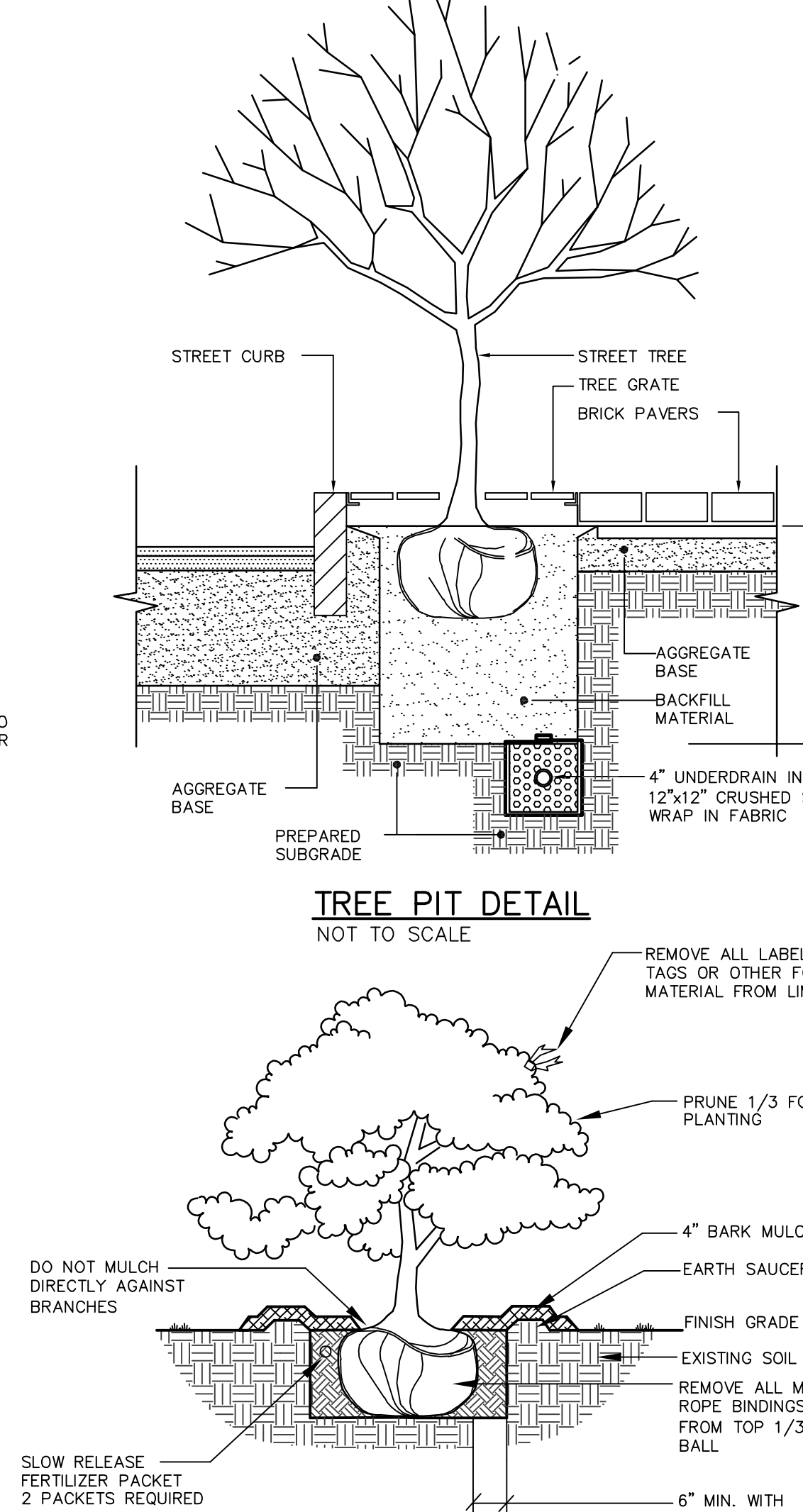


**OIL / GRIT SEPARATOR**  
NOT TO SCALE

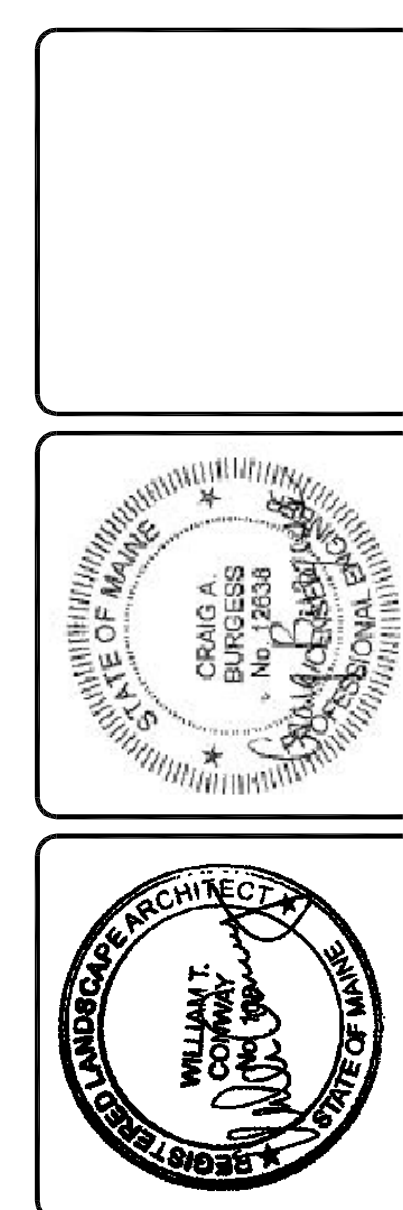


**DECIDUOUS TREES** 2" TO 4" CALIPER  
NOT TO SCALE

**DECIDUOUS TREES** UNDER 2" CALIPER OR UNDER 8' IN HEIGHT  
**EVERGREEN TREES** 7"-0" IN HEIGHT & UNDER  
NOT TO SCALE



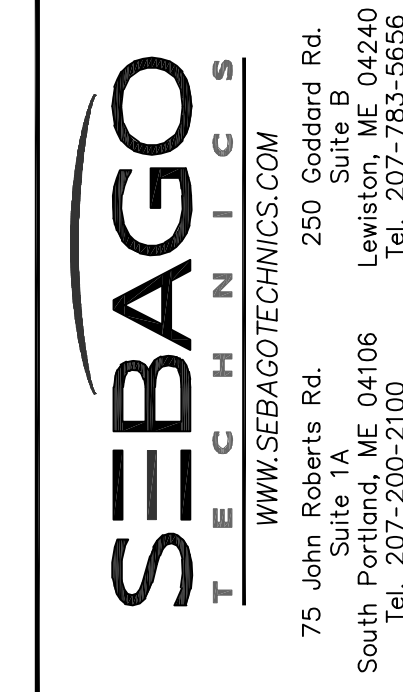
**DECIDUOUS & EVERGREEN SHRUB**  
NOT TO SCALE



DESIGNED	CHECKED
WTC	WTC
C	WTC
B	WTC
A	WTC

PROJECT NO. 11101101  
SUBMITTAL NO. 2  
DATE: 11/16/16  
STATUS: SUBMITTED FOR SITE PLAN REVIEW AND APPROVAL

WWW.SEBAGOTECHNICS.COM  
75 John F. Kennedy Blvd., 250 Suite 809  
Portland, ME 04106  
South Portland, ME 04106  
Tel: 207-200-2100 Fax: 207-782-5656



**INDIA NEWBURY RESIDENCES, LLC**

50-62 INDIA STREET  
PORTLAND, MAINE  
35 FAIR ST., SUITE 107B  
ROSBURY, MA 02119

PROJECT NO. 11101101  
SCALE  
14164 NTS  
SHEET 110F 11