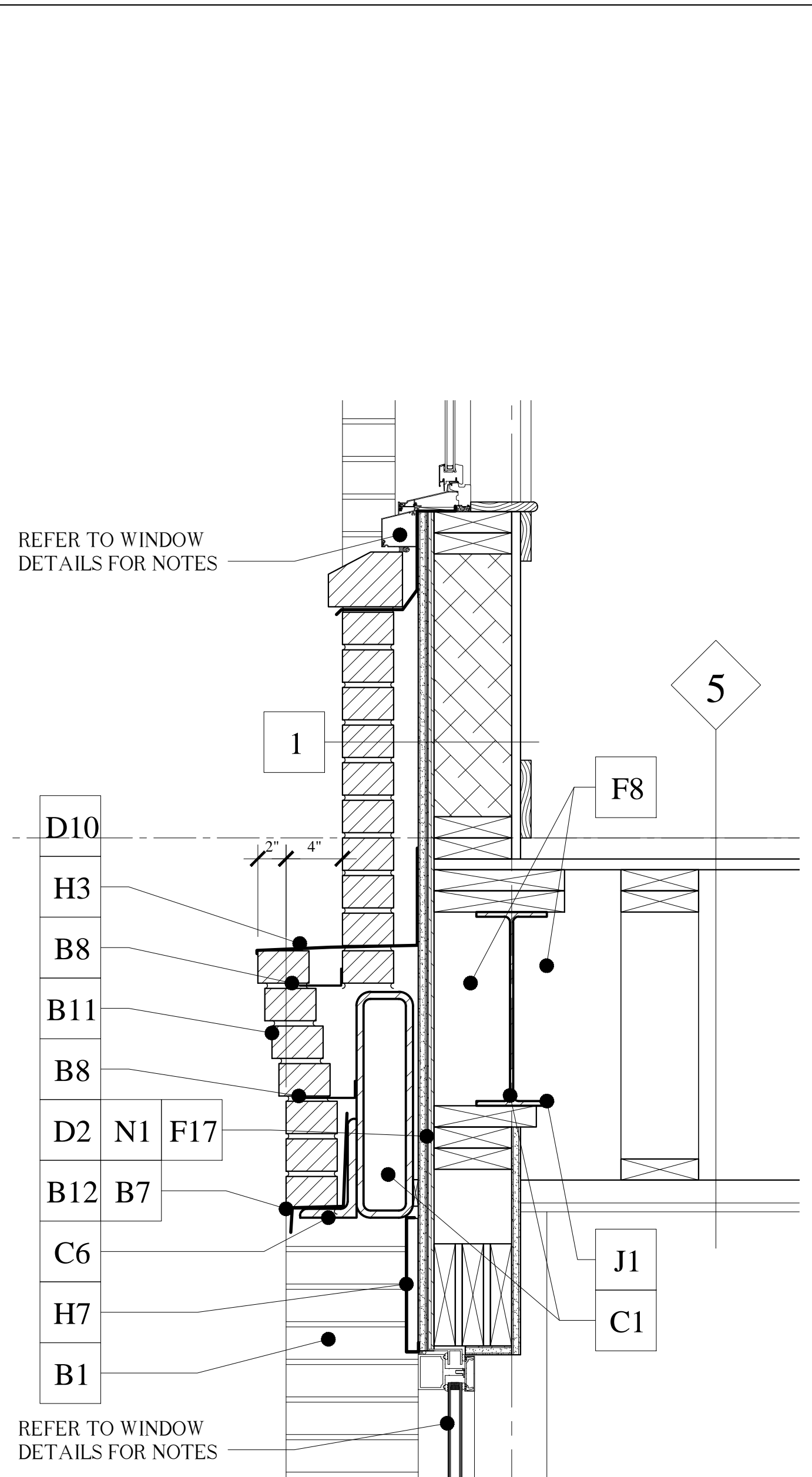
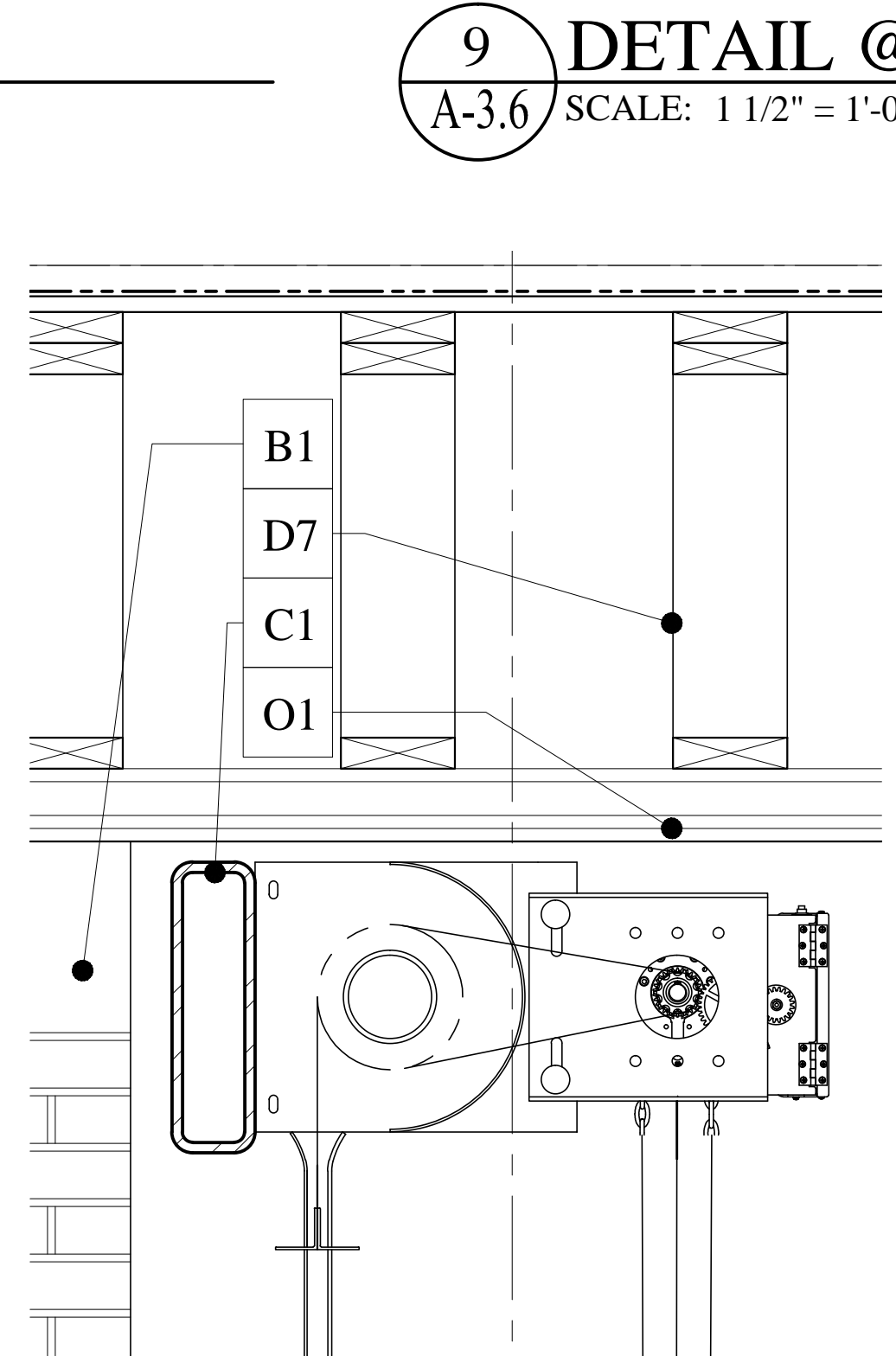


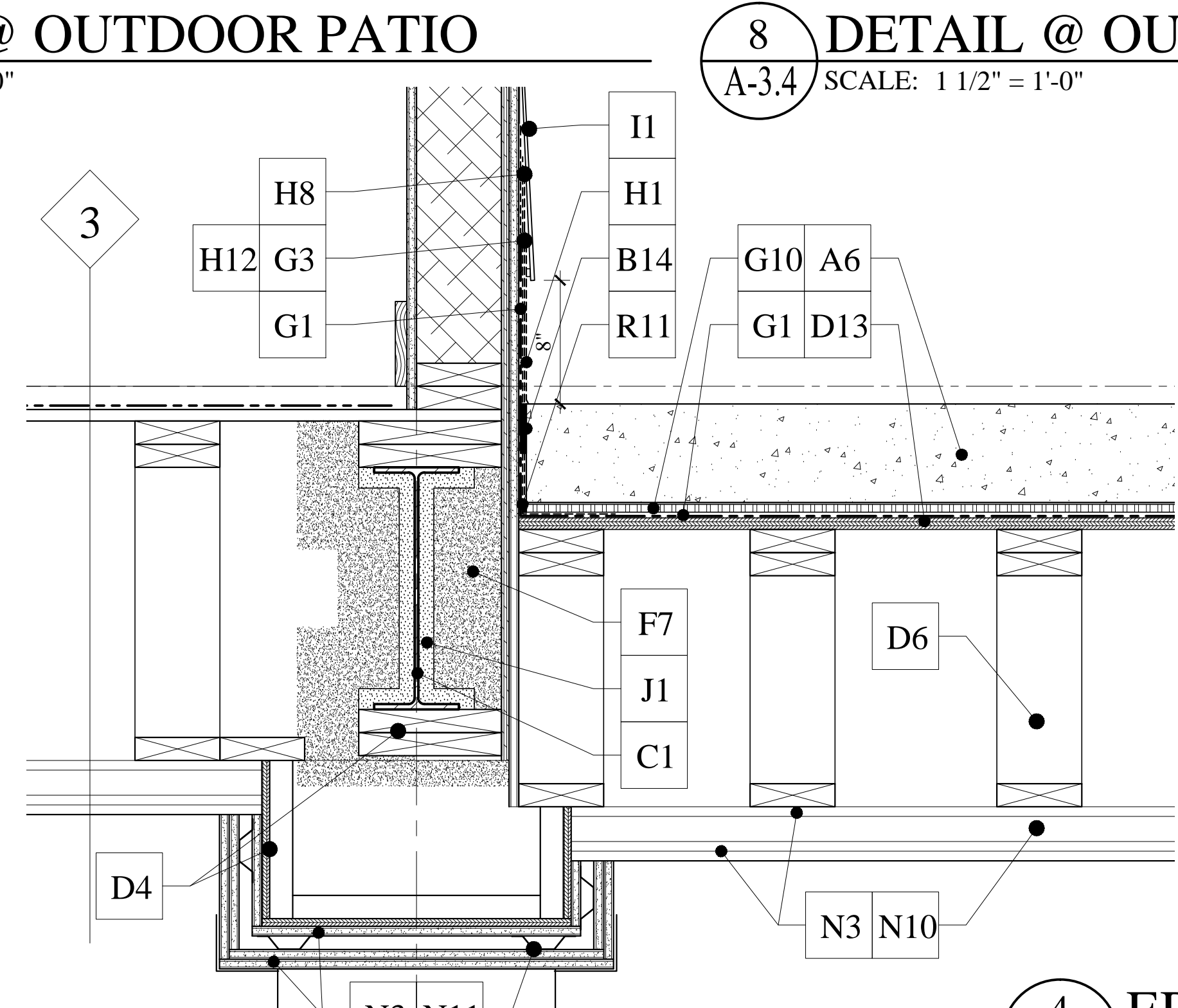
**11 BRICK DETAIL @ DECK**  
A-3.5 SCALE: 3" = 1'-0"



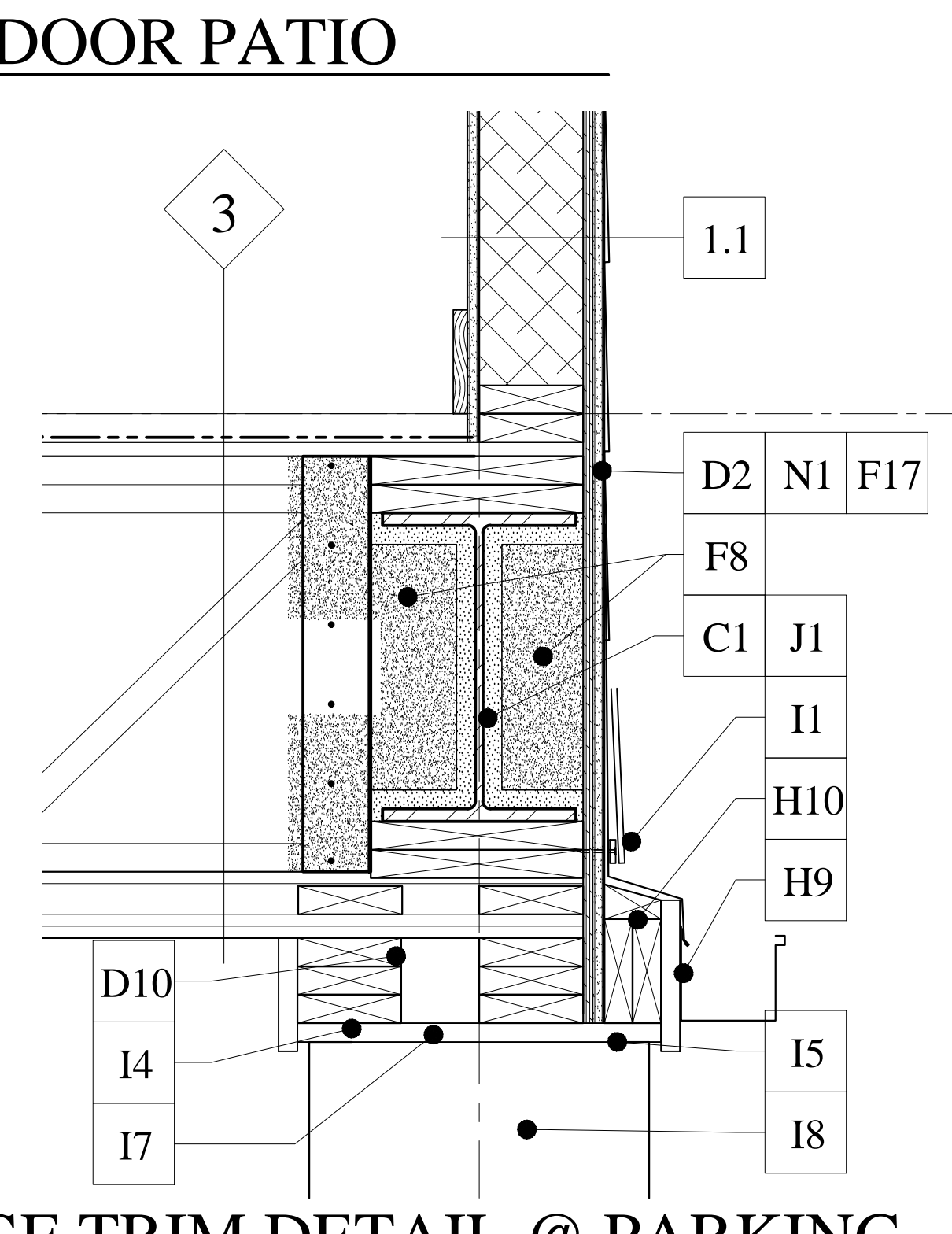
**10 DETAIL @ ENTABLATURE**  
A-3.5 SCALE: 1 1/2" = 1'-0"



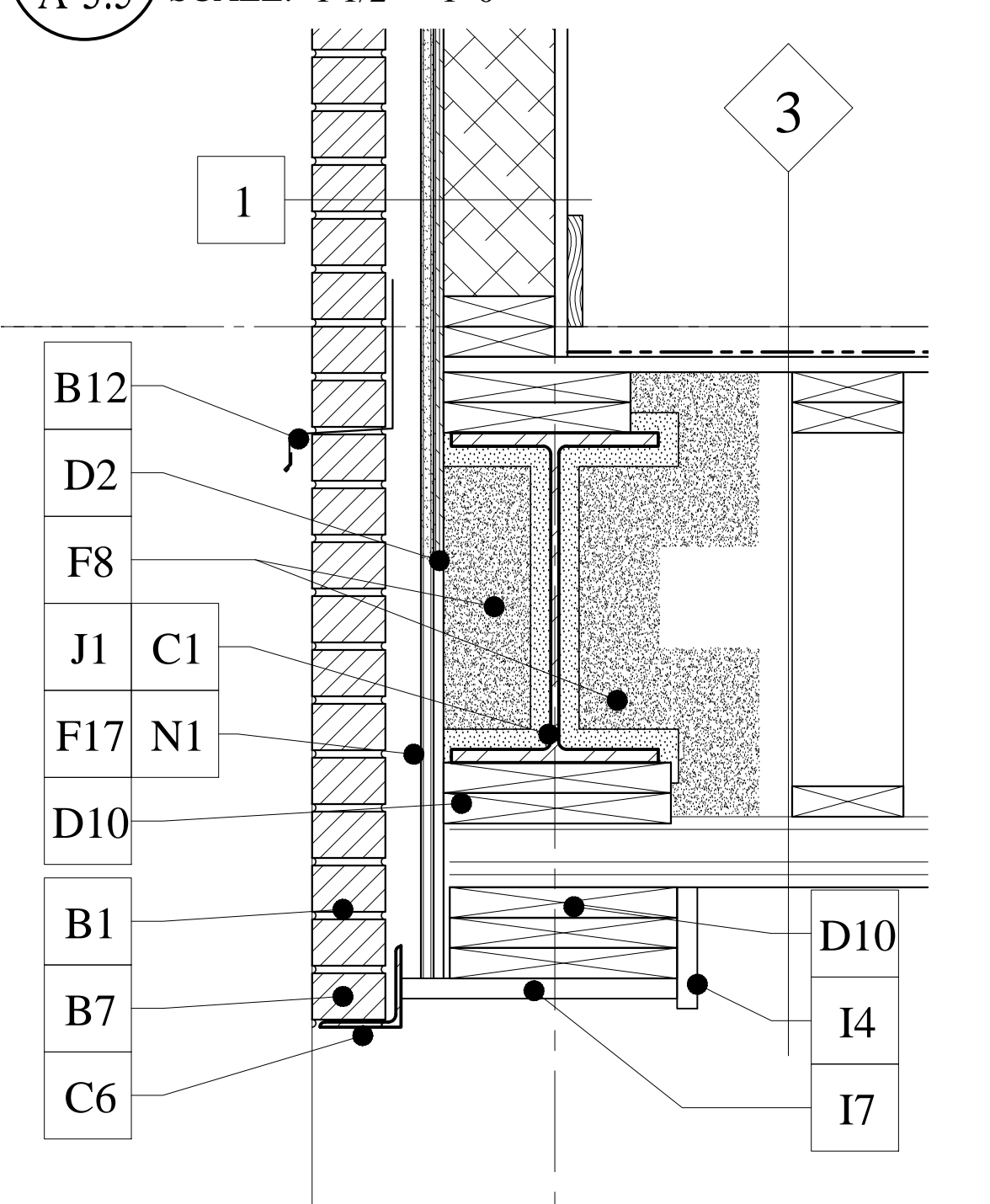
**9 DETAIL @ OUTDOOR PATIO**  
A-3.6 SCALE: 1 1/2" = 1'-0"



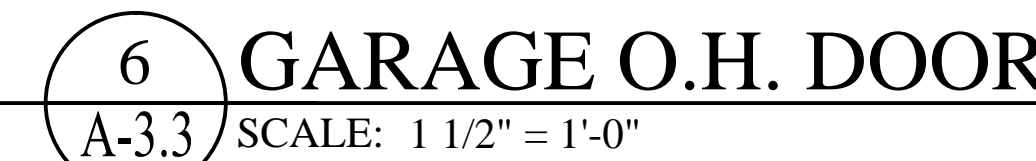
**8 DETAIL @ OUTDOOR PATIO**  
A-3.4 SCALE: 1 1/2" = 1'-0"



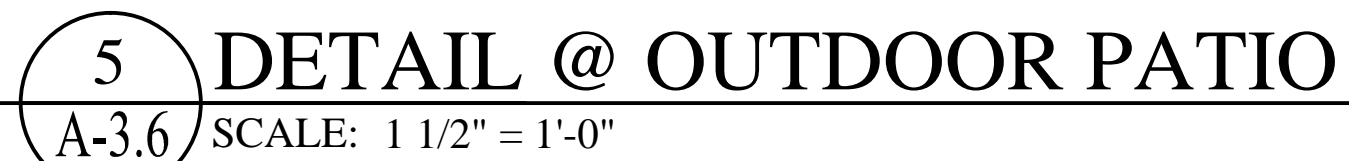
**4 EDGE TRIM DETAIL @ PARKING**  
A-3.6 SCALE: 1 1/2" = 1'-0"



**7 DET. @ GARAGE ENTRY**  
A-3.3 SCALE: 1 1/2" = 1'-0"

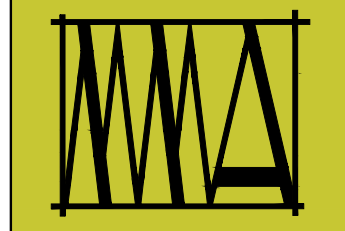


**6 GARAGE O.H. DOOR**  
A-3.3 SCALE: 1 1/2" = 1'-0"



**5 DETAIL @ OUTDOOR PATIO**  
A-3.6 SCALE: 1 1/2" = 1'-0"

- MATERIALS SCHEDULE:**
- A1 CAST IN PLACE CONCRETE WALL
  - A2 CONCRETE SLAB ON GRADE
  - A3 1 1/2" GYP-CRETE
  - A4 3/4" GYP-CRETE
  - A5 SOUND ATTENUATION MAT (1/8") TURN UP WALL - TYPICAL
  - A6 CONCRETE SLAB (BROOM FINISH @ OUTDOOR PATIO)
  - A7 CONCRETE PIER
  - B1 BRICK VENEER W/ CONTROL JOINTS - TYPICAL
  - B2 BRICK ROWLOCK WINDOW SILL - TYPICAL
  - B3 BRICK TERMINATION COURSE (SLOPED STRETCHER COURSE - PRE-MANUFACTURED)
  - B4 BRICK SOLDIER COURSE HEAD (1 COURSE) - TYPICAL
  - B5 SUB-GRADE BRICK GROUT SOLID - TYPICAL
  - B6 MORTAR NET - TYPICAL
  - B7 WEEP HOLE - TYPICAL
  - B8 BRICK TIE / ANCHOR
  - B9 VERTICAL BRICK RELIEF, 1 1/2" RECESS
  - B10 PRE-MANUFACTURED STRETCHER BRICK TERMINATION TYPICAL
  - B11 BRICK ENTABLATURE: (4) CORBEL, (2) STANDARD
  - B12 THRU-WALL / EMBEDDED COPPER FLASHING
  - B13 FLEXIBLE FLASHING TAPE
  - B14 COMPRESSIBLE FILLER (CLOSED CELL)
  - B15 1 1/2" AIR SPACE - TYPICAL
  - C1 STRUCTURAL STEEL
  - C2 STEEL LINTEL (GLUOSE)
  - C3 STEEL RELIEVING ANGLE
  - C4 STEEL TUBE
  - C5 STEEL HANDRAIL POST W/ SHEET MEMBRANE FLASHING BOOT
  - C6 STEEL ANGLE
  - C7 STEEL PIPE HANDRAIL (PAINTED)
  - C8 STEEL SPIRAL STAIR W/ WOOD TREADS & STEEL HANDRAIL
  - C9 SQUARE ALUMINUM 42" HIGH HANDRAIL SYSTEM, BLACK (PRE-FABRICATED)
  - C10 STAINLESS STEEL CANOPY SUPPORT SYSTEM
  - C11 METAL PLATE/CLIP - REFER TO STRUCTURAL DRAWINGS - TYPICAL
  - C12 METAL STUD
  - C13 METAL SLEEVE (CAST IN CONCL.)
  - D1 WOOD FRAME WALL CONSTRUCTION - TYPICAL
  - D2 STRUCTURAL "OSB" SHEATHING (REFER TO STRUCTURAL) - TYPICAL
  - D3 WOOD BLOCKING
  - D4 WOOD NAILER
  - D5 WOOD FRAME FLOOR TRUSS SYSTEM - TYPICAL
  - D6 3/4" STRUCTURAL FLOOR SHEATHING - TYPICAL
  - D7 FIRE RETARDANT TREATED LUMBER - TYPICAL
  - D8 P.T. 2x SILL PLATE - TYPICAL
  - D9 BUILT-UP 2x - TYPICAL
  - D10 WOOD FRAME ROOF TRUSS SYSTEM - TYPICAL
  - D11 TAPERED DECK JOISTS (TAPER 1/2" /FT. - TAPER MIN. PER STRUCTURALS) TYP.
  - D12 DECK SHEATHING (REFER TO STRUCTURALS) - TYPICAL
  - D13 P.T. SLEEPER W/ EPDM SOLES THREE SIDES (GLUE) - TYPICAL
  - D14 LVL BEAM / HEADER
  - E1 1x6 WOOD TRIM - TYPICAL
  - E2 1x4 WOOD TRIM - TYPICAL
  - E3 1x6 WOOD (POPLAR) BASEBOARD W/ 3/4" QUARTER ROUND - TYPICAL
  - E4 WOOD BASE - REFER TO INTERIOR ELEVATIONS/FINISH SCHEDULE - TYPICAL
  - E5 1x4 WOOD (POPLAR) TRIM, PAINTED - TYPICAL
  - E6 1x WOOD (POPLAR) EXTENSION JAMBS, PAINTED (FIELD APPLIED) - TYPICAL
  - E7 1x WOOD (POPLAR) SILL PAINTED FINISH (FIELD APPLIED) - TYPICAL
  - E8 PAINTED MDF CLOSET SHELF & PAINTED WOOD ROD
  - E9 SOLID SURFACE SHOWER SEAT
  - E10 MILLWORK
  - F1 CEMENTITIOUS WATERPROOFING
  - F2 FLUID APPLIED WATERPROOFING MEMBRANE
  - F3 EXTRUDED POLYSTYRENE BOARD INSULATION (R-10 MIN.)
  - F4 CELLULOSIC FIBER INSULATION (FULL THICKNESS)
  - F5 VAPOR RETARDER (UNDER SLAB)
  - F6 FOAM-IN-PLACE INSULATION SEALANT
  - F7 CLOSED CELL SPRAY FOAM INSULATION (R-21)
  - F8 CLOSED CELL SPRAY FOAM INSULATION (R-30)
  - F9 CLOSED CELL SPRAY FOAM INSULATION (FULL THICKNESS)
  - F10 OPEN CELL SPRAY FOAM INSULATION (FULL THICKNESS)
  - F11 POLYISOCYANURATE BOARD INSULATION (POLYISO) - R-20 MIN
  - F12 POLYISO TAPERED RIGID INSULATION (1/4" MIN TAPER) - R-20 MIN. TYPICAL
  - F13 WEATHER BARRIER (SHEET W/ OVERLAP) - TYPICAL
  - F14 WEATHER BARRIER FLASHING TAPE
  - F15 FOUNDATION WEATHER BARRIER TAPE - TYPICAL
  - F16 VAPOR BARRIER - TYPICAL
  - F17 PRE-FABRICATED SILL DRAINAGE PAN (WINDOWS)
  - F18 COPPER PAN FLASHING W/ WELDED SEAMS, TYP. @ ALL EXTERIOR DECK DOORS
  - G1 EPDM RUBBER DECK ROOFING - TYPICAL
  - G2 EPDM @ PARAPET WALL - TYPICAL
  - G3 METAL TRANSITION STRIP - TYPICAL
  - G4 TERMINATION BAR
  - G5 EPDM REINFORCING STRIP - TYPICAL
  - G6 NEOPRENE GASKET/ EXPANSION JOINT BULB - TYPICAL
  - G7 EPDM PIPE FLASHING
  - G8 ROOF DRAIN
  - G9 ROOF HATCH
  - G10 DRAINAGE MAT
  - G11 CAPILLARY WEEP
  - H1 COPPER SHEET FLASHING
  - H2 ALUMINUM SHEET FLASHING
  - H3 PAINTED STEEL SHEET FLASHING
  - H4 METAL ROOF EDGE STRIP - TYPICAL
  - H5 COUNTER FLASHING - TYPICAL
  - H6 METAL COPING - TYPICAL
  - H7 METAL FASCIA'S, RAKES AND SOFFITS - TYPICAL
  - H8 ICE AND WATER SHIELD FLASHING - TYPICAL
  - H9 5" ALUMINUM SQUARE GUTTER & DOWNSPOUT, GREY
  - H10 METAL FLASHING
  - H11 WINDOW FLASHING SYSTEM - TYPICAL
  - H12 FLASHING TAPE
  - I1 12" CEMENTITIOUS SIDING (10" EXPOSURE) W/ METAL BACK FLASHING - TYPICAL
  - I2 5/4x4 CEMENTITIOUS TRIM
  - I3 5/4x6 CEMENTITIOUS TRIM
  - I4 1x6 CEMENTITIOUS TRIM
  - I5 1x8 CEMENTITIOUS TRIM
  - I6 1x10 CEMENTITIOUS TRIM
  - I7 1x CEMENTITIOUS SOFFIT PANEL
  - I8 1x CEMENTITIOUS TRIM
  - J1 CEMENTITIOUS SPRAY FIRE RESISTIVE MATERIAL - TYPICAL
  - J2 FIRE STOPPING
  - K1 SILL SEALANT - TYPICAL
  - K2 BACKER ROD (CLOSED CELL) & SEALANT @ BRICK VENEER - TYPICAL
  - K3 BACKER ROD (CLOSED CELL) & SEALANT (HEAD, JAMB AND SILL) - TYPICAL
  - K4 CONTROL JOINT W/ CLOSED CELL FOAM FILLER
  - L1 WOOD DOOR
  - L2 HOLLOW METAL FRAME W/ SOUND/ SMOKE SEAL
  - L3 STEEL DOOR (INSULATED)
  - L4 ALUMINUM FRAME W/ SOUND/ SMOKE SEAL
  - L5 ALUMINUM DOOR
  - L6 ALUMINUM DOOR SILL (ADA)
  - L7 WOOD CLAD DOOR (EXTERIOR)
  - L8 FIELD APPLIED EXTERIOR DOOR CASING BY MANUFACTURER
  - L9 METAL OVERHEAD ROLLING DOOR SYSTEM
  - M1 RESIDENTIAL WOOD CLAD WINDOW
  - M2 FACTORY MULL (ONLY NARROW MULL) - TYPICAL
  - M3 FIELD APPLIED EXTERIOR WINDOW CASING BY MANUFACTURER
  - M4 ALUMINUM STOREFRONT WINDOW SYSTEM
  - M5 SKYLIGHT W/ FALL PROTECTION GLAZING
  - N1 EXTERIOR FIRE CODE SHEATHING (DENS GLASS) - TYPICAL
  - N2 FIRE CODE TYPE 'X' GWB
  - N3 FIRE CODE TYPE 'C' GWB
  - N4 MOISTURE & MOLD RESISTANT GWB
  - N5 DENS DECK GWB SHEATHING
  - N6 INTERIOR GWB SHEATHING
  - N7 GWB FIRE RATED SHAFT WALL ASSEMBLY
  - N8 TILE BACKER BOARD
  - N9 1/2" RESILIENT CHANNEL - TYPICAL
  - N10 7/8" HAT CHANNEL W/ GENIE CLIPS - TYPICAL
  - N11 7/8" HAT CHANNEL
  - O1 SUSPENDED NON-RATED EXTERIOR GWB, CEILING
  - O2 SUSPENDED ACOUSTICAL CEILING
  - O3 WOOD FIBER CORE CEILING
  - O4 5" VINYL V-GROOVE CEILING W/ SCOTIA - TYPICAL
  - P1 FLOOR TILE
  - P2 WALL TILE
  - P3 CARPET
  - P4 RECESSED ENTRY MAT
  - P5 PRE-ENGINEERED FLOATING HARDWOOD FLOOR - TYPICAL
  - P6 COMPOSITE EXTERIOR DECKING
  - P7 VCT
  - P8 FLOORING TRANSITION STRIP
  - Q1 RECESSED LIGHT (CEILING MOUNT) - TYPICAL
  - Q2 RECESSED LIGHT (WALL MOUNT) - TYPICAL, 18" AFF. WALL SCOSCE
  - Q3 CRUSHED ROCK
  - R1 CRUSHED ROCK
  - R2 COMPACTED SAND
  - R3 COMPACTED FILL
  - R4 FILTER FABRIC
  - R5 SAND BASE
  - R6 "OLD PORT" PAVER SIDEWALK - TYPICAL
  - R7 BITUMINOUS PAVING - TYPICAL
  - R8 RADON/SUB-SURFACE SOIL MITIGATION SYSTEM (VENT THRU ROOF)
  - R9 VAPOR RETARDER
  - R10 GEOTEXTILE FABRIC
  - R11 WATER STOP
  - R12 SUB-SURFACE GROUND IMPROVEMENT



**MARK  
MUELLER  
ARCHITECTS**  
A.I.A.  
100 Commercial Street  
Suite 205  
Portland, Maine 04101  
Phone: 207.774.9057  
Email:  
rf@muellerarchitects.com

© COPYRIGHT 2016  
MARK MUELLER ARCHITECTS

**62**

**I  
N  
D  
I  
A**

INDIA STREET  
NEIGHBORHOOD  
PORTLAND, MAINE

**DETAILS**

REVISIONS  
DATE  
PROJECT  
INDIA STREET  
DRAWN BY  
CHECK BY  
MAM

**FOUNDATION PERMIT**  
JULY 8, 2016

**A-5.2**