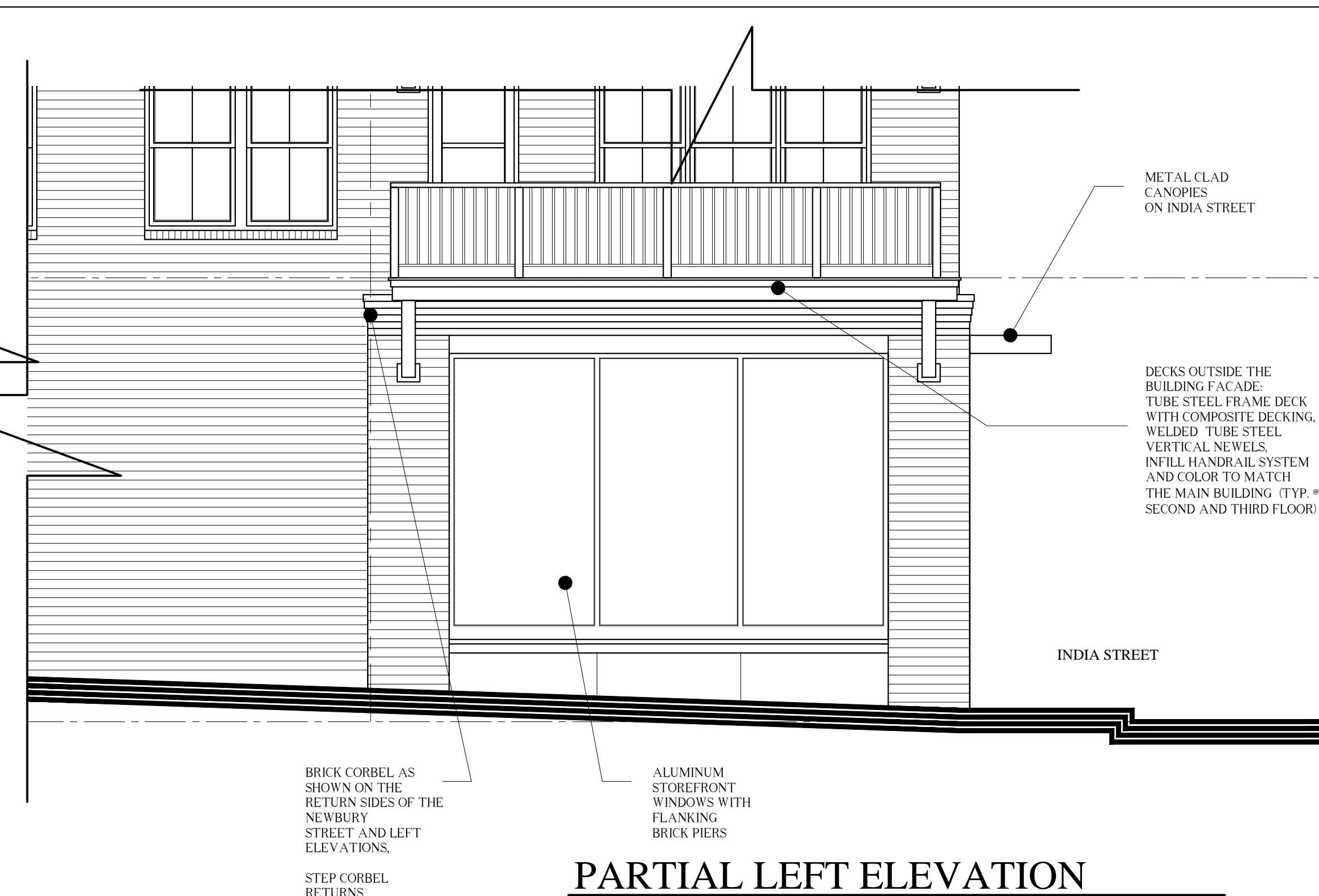
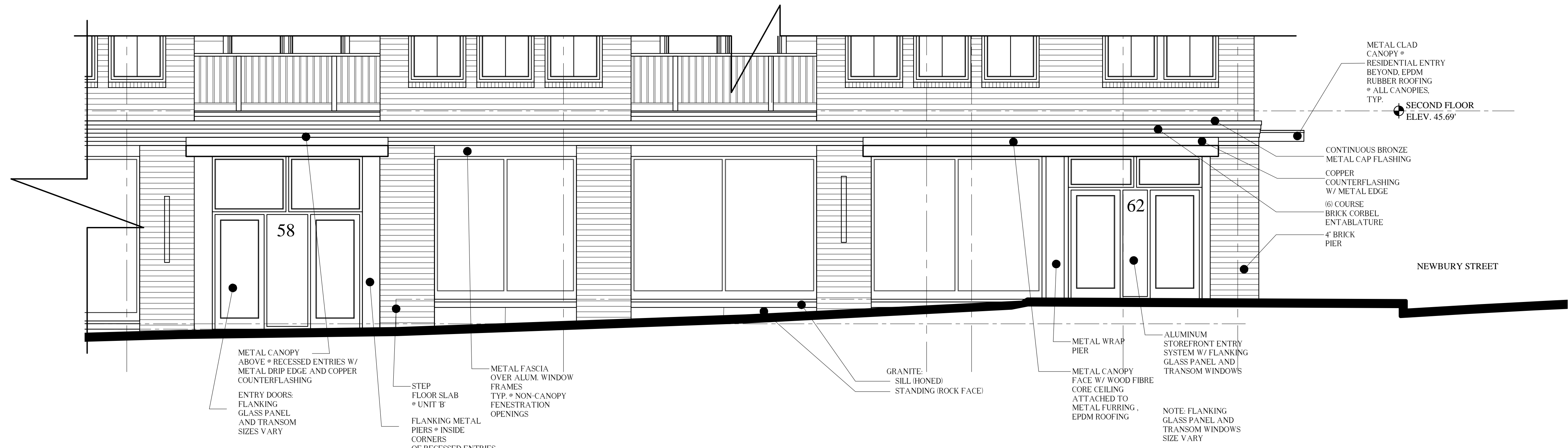




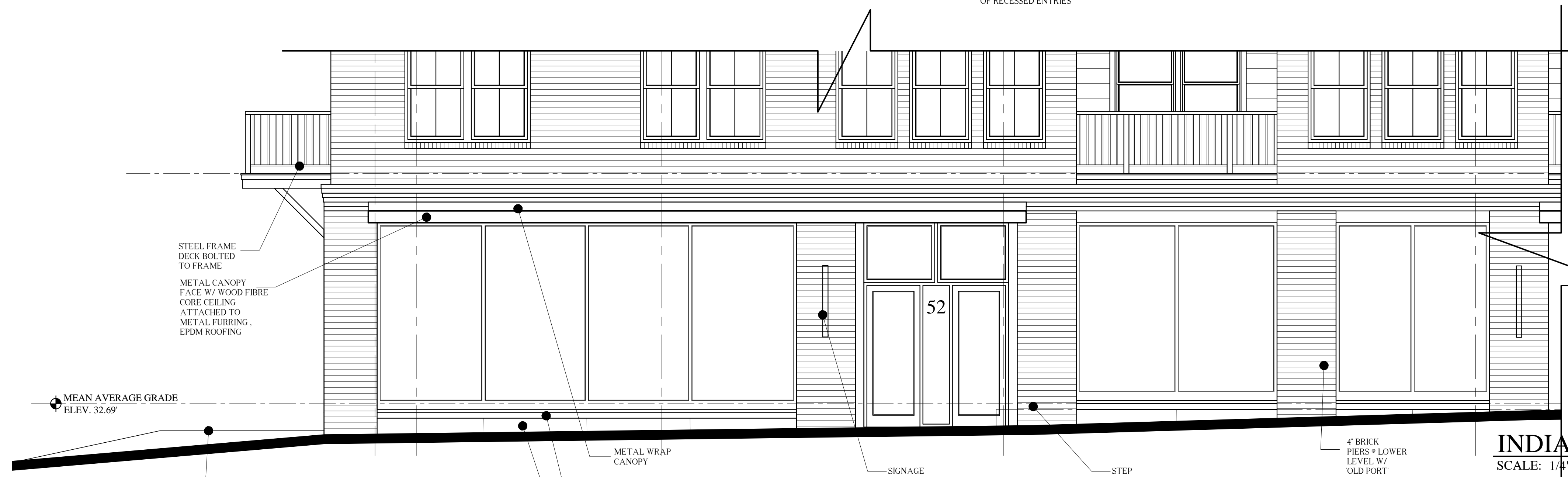
PARTIAL NEWBURY STREET ELEVATION
SCALE: 1/4"=1'-0"



PARTIAL LEFT ELEVATION
SCALE: 1/4"=1'-0"



INDIA STREET ELEVATION
SCALE: 1/4"=1'-0"



INDIA STREET ELEVATION - (CONT.)
SCALE: 1/4"=1'-0"

FOUNDATION PERMIT
JULY 8, 2016



**MARK
MUELLER
ARCHITECTS**
A.I.A.
100 Commercial Street
Suite 205
Portland, Maine 04101
Phone: 207.774.9057
Email: rfi@muellerarchitects.com

© COPYRIGHT 2016
MARK MUELLER ARCHITECTS

62

I
N
D
I
A

INDIA STREET
NEIGHBORHOOD
PORTLAND, MAINE

BUILDING ELEVATIONS

REVISIONS	DATE
	JUNE 2016
PROJECT	INDIA STREET
DRAWN BY	...
CHECK BY	MAM

A-2.2