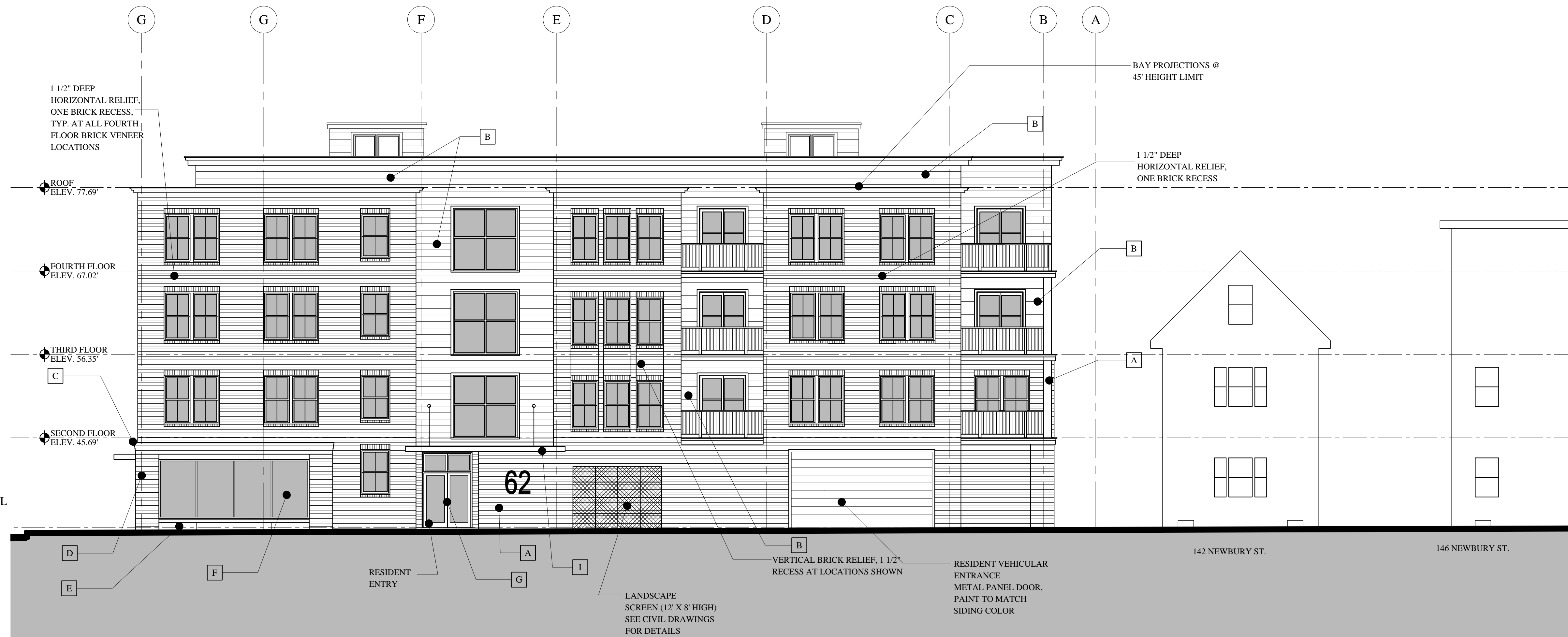


- A** BRICK VENEER  
'OLD PORT' BLEND, MEDIUM RANGE FLASH BY MORIN BRICK IN AUBURN MAINE
- B** 10" CEMENTITIOUS SIDING  
W/ METAL SIDING CORNERS
- C** BRICK ENTABLATURE:  
COURSES: (4) CORBEL  
: (2) VERTICAL COURSING
- D** MASONRY PIERS:  
BRICK: 'OLD PORT' BLEND  
TO MATCH THE MAIN BUILDING
- GRANITE SILL:  
**E** RUNNING: ROCK FACE (MIN. 6' LENGTHS)  
THICKNESS: 3"  
4" SLOPE CAP: HONED (15° PITCH),  
CONTINUOUS LENGTHS  
COLOR: DEER ISLE
- F** MIXED USE FACADE FENESTRATION: WINDOWS  
MATERIAL: ALUMINUM  
FRAMES: 2 1/2" X 4 1/2"  
COLOR: CHARCOAL  
GLASS: CLEAR, 82% VLT, CENTER SET GLASS
- G** MIXED USE FACADE FENESTRATION: DOORS  
SIMILAR TO WINDOWS  
DOORS: STYLE AND RAIL TYPE  
GLASS: CLEAR, TRANSOMS AND FLANKING GLASS PANEL
- H** RESIDENTIAL WINDOWS:  
MANUFACTURE: PELLA  
SERIES: 450 PRO-LINE  
STYLE: METAL CLAD DOUBLE HUNG W/ SDL  
MOULDINGS: METAL  
BRICK VENEER- 1 1/2" BRICKMOLD  
SIDING: ~3 1/2" BRICKMOLD  
SILLS: 2"  
GLASS: LOW 'E' 72% VLT, CENTER GLASS



**NEWBURY STREET ELEVATION**

SCALE: 1/8"=1'-0"

- I** METAL CANOPY:  
MATERIAL: ALUMINUM, PRE-WEATHERED GALVALUME  
FINISH: PAINTED KYNAR, LOW GLOSS  
THICKNESS: 30 MIL.  
EXTENTS: (3) SIDES, WOOD FIBER CORE  
CEILING SET W/IN METAL FRAME
- J** EXTERIOR DECKS:  
GUARDRAILS: ALUM. NEWEL POSTS  
AND BALUSTERS  
LIGHTING: LOW WALL MOUNT  
5 WATT LED FIXTURE, TYP. ALL DECKS  
'V' GROOVE VINYL CEILING W/ CLOSURE TRIM (DARK)

DECKS OUTSIDE THE BUILDING FACADE:  
TUBE STEEL FRAME DECK WITH COMPOSITE  
DECKING, WELDED TUBE STEEL VERTICAL NEWELS,  
INFILL HANDRAIL SYSTEM AND COLOR TO MATCH  
THE MAIN BUILDING (TYP. @ SECOND AND THIRD  
FLOOR)



**INDIA STREET ELEVATION**

SCALE: 1/8"=1'-0"

**FOUNDATION PERMIT**

JULY 8, 2016



**MARK  
MUELLER  
ARCHITECTS**

A.I.A.

100 Commercial Street  
Suite 205  
Portland, Maine 04101  
Phone: 207.774.9057  
Email:  
rfi@muellerarchitects.com

© COPYRIGHT 2016  
MARK MUELLER ARCHITECTS

62

I  
N  
D  
I  
A

INDIA STREET  
NEIGHBORHOOD  
PORTLAND, MAINE

BUILDING ELEVATIONS

REVISIONS

DATE

JUNE 2016

PROJECT

INDIA  
STREET

DRAWN BY

...

CHECK BY

MAM

**A-2.0**