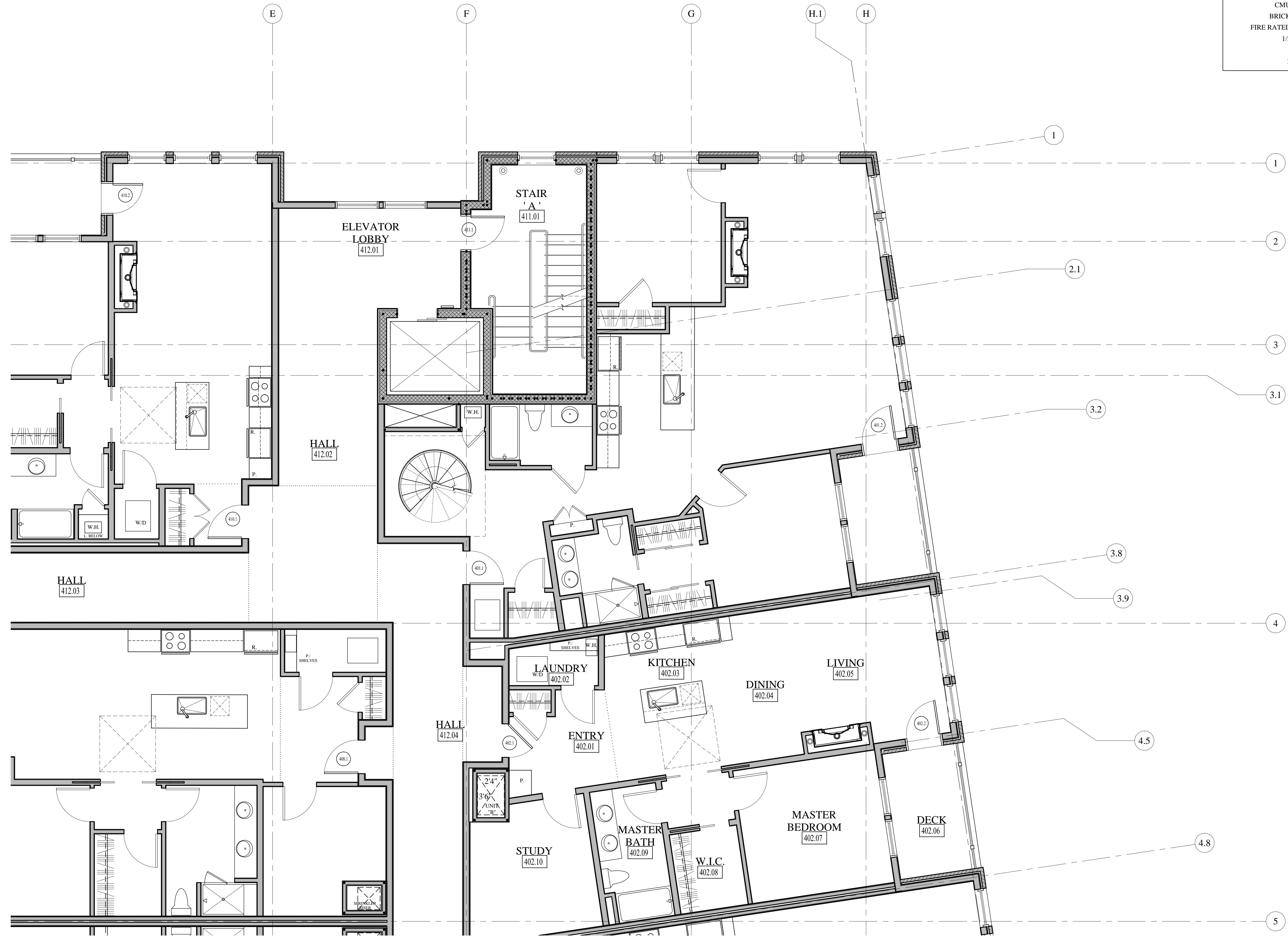


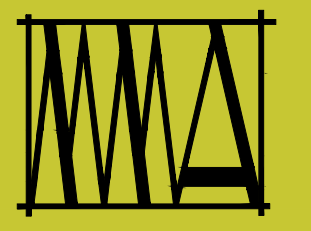
WALL LEGEND

STUD WALL	
CMU WALL	
BRICK WALL	
FIRE RATED WALL	
1/2 HOUR	
1 HOUR	
2 HOUR	



PARTIAL FOURTH FLOOR PLAN 'C'
SCALE: 1/4"=1'-0"

FOUNDATION PERMIT
JULY 8, 2016



MARK
MUELLER
ARCHITECTS
A.I.A.
100 Commercial Street
Suite 205
Portland, Maine 04101
Phone: 207.774.9057
Email:
rfi@muellerarchitects.com

© COPYRIGHT 2016
MARK MUELLER ARCHITECTS

62

I
N
D
I
A

INDIA STREET
NEIGHBORHOOD
PORTLAND, MAINE

PARTIAL FOURTH FLOOR PLAN 'C'

REVISIONS	
DATE	JUNE 2016
PROJECT	INDIA STREET
DRAWN BY	...
CHECKED BY	MAM

A-1.20