

WALL LEGEND

STUD WALL	
CMU WALL	
BRICK WALL	
FIRE RATED WALL	
1/2 HOUR	
1 HOUR	
2 HOUR	



**MARK
MUELLER
ARCHITECTS**
A.I.A.
100 Commercial Street
Suite 205
Portland, Maine 04101
Phone: 207.774.9057
Email:
rfi@muellerarchitects.com

© COPYRIGHT 2016
MARK MUELLER ARCHITECTS

62

I
N
D
I
A

INDIA STREET
NEIGHBORHOOD
PORTLAND, MAINE

FIRST FLOOR PLAN
REVISIONS
DATE
JUNE 2016
PROJECT
INDIA STREET
DRAWN BY
CHECK BY
MAM

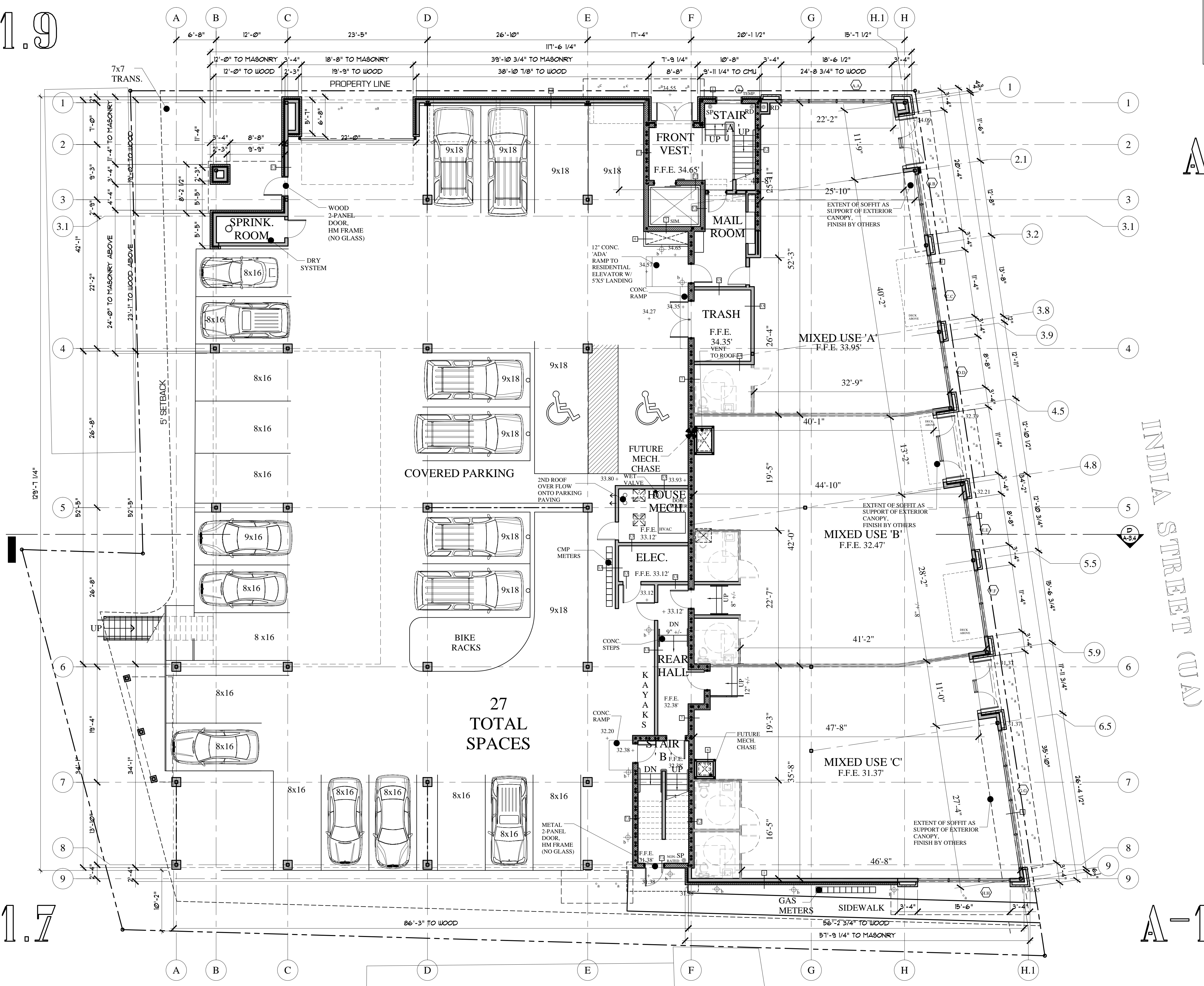
A-1.1

A-1.9

A-1.8

A-1.7

A-1.6



FIRST FLOOR PLAN
SCALE: 1/8"=1'-0"

1ST FLOOR NOTES:
MIXED USE COMMERCIAL SPACES ARE SHALL BE UNFINISHED AS PART OF THE BASIC CONTRACT.
WORK AT COMMERCIAL SPACES TO OBTAIN OCCUPANCY PERMITS WILL INCLUDE:

FOUNDATION PERMIT
JULY 8, 2016