

Consultant Name and Address:

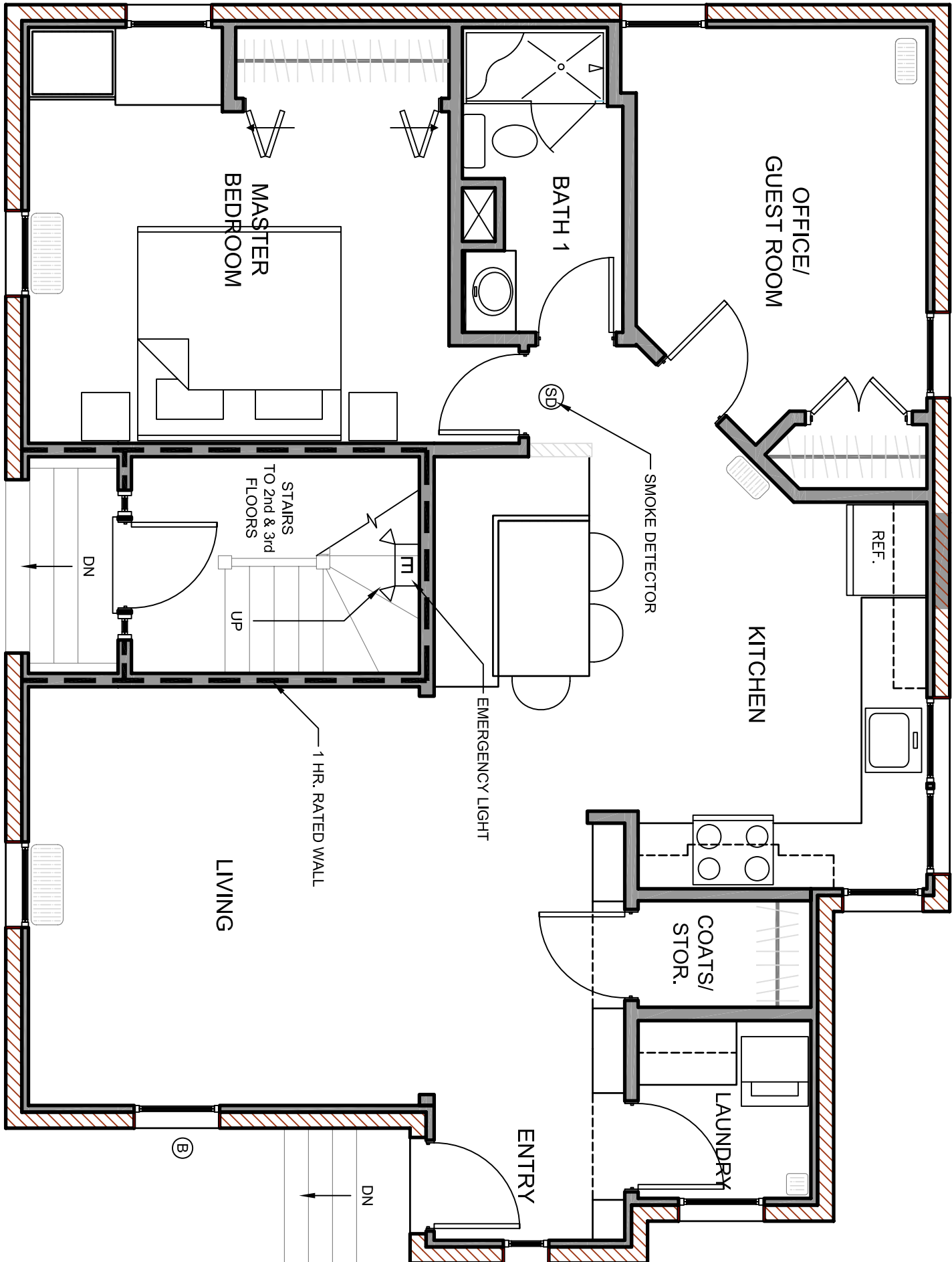
ARCHITECT
JOHN E. HANSEN, ARCHITECT
632 SPRUCE HEAD ROAD 04888
SOUTH THOMASTON, MAINE
PHONE: (207) 594-5310 FAX: (207) 594-5370

Buck Consulting
Group, LLC
Architecture, Engineering &
Interior Design
16 Truway Lane, Suite 23
P.O. Box 1367
Orangetown, Maine 04843
Office: (207) 236-9970
Facsimile: (207) 236-9971
Buck Consulting Group, LLC © 2007

LIFE SAFETY PLAN

No.	Revision/Issue	Date	Design by:	Checked by:	
			JEH	ABC	
Drawn by:	Approved by:		CMC	ABC	
Project:	Date:				
PROJECT NUMBER	ALQ01ST 01, 2007				
Sheet Number:					

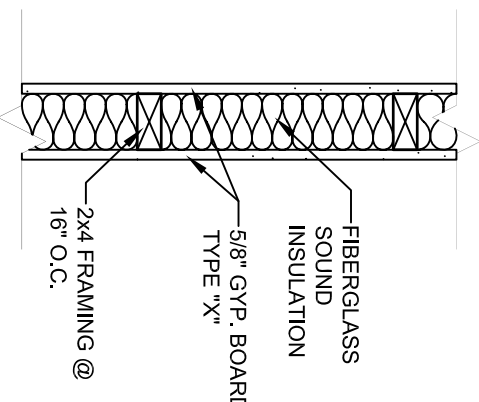
LS01



PROPOSED FIRST LEVEL LIFE SAFETY PLAN

SCALE: 1/4" = 1'-0"

--- INDICATES 1 HR. RATED WALL

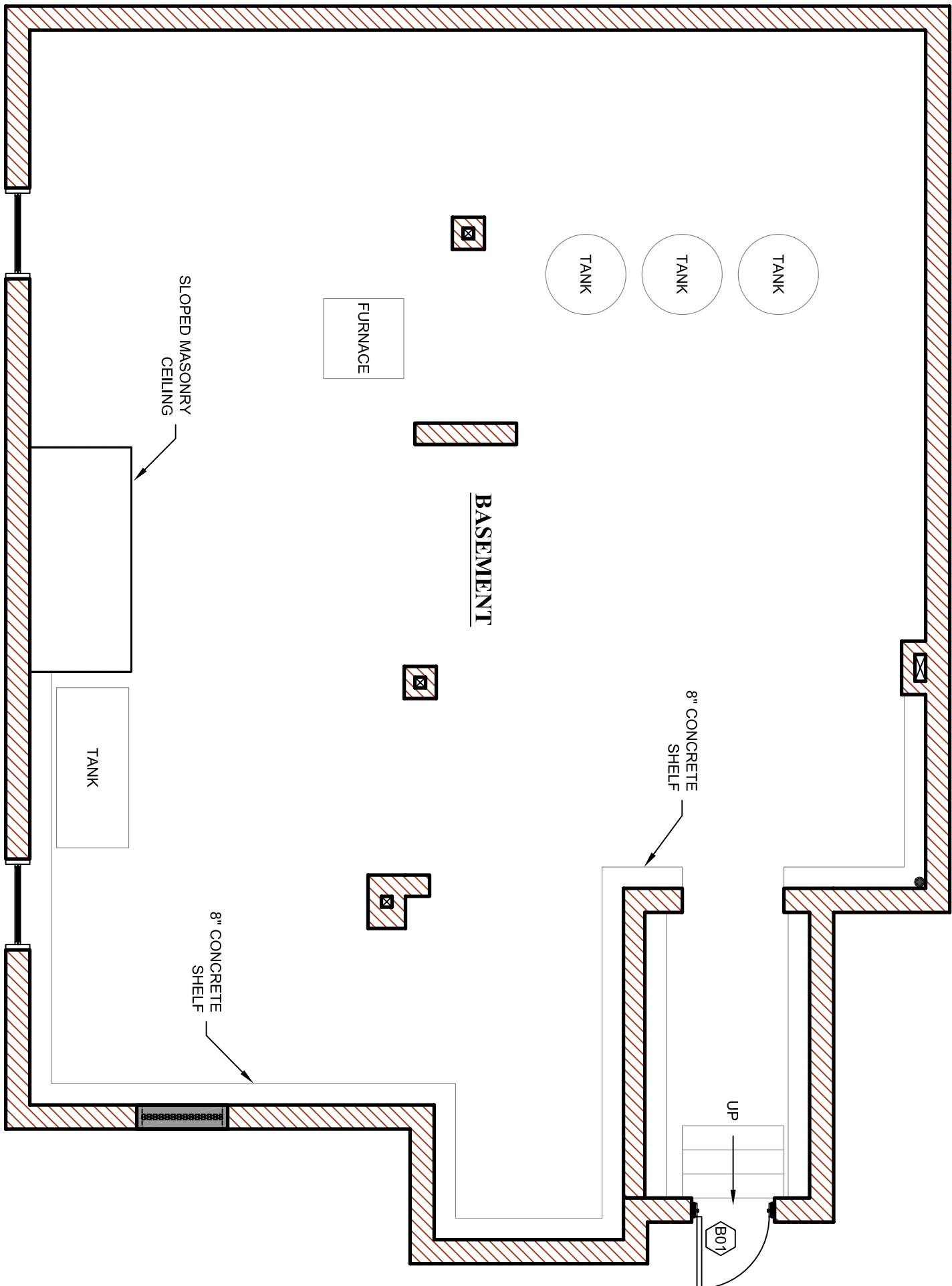


1 HR. RATED WOOD WALL

FIRE TEST: DESIGN U395

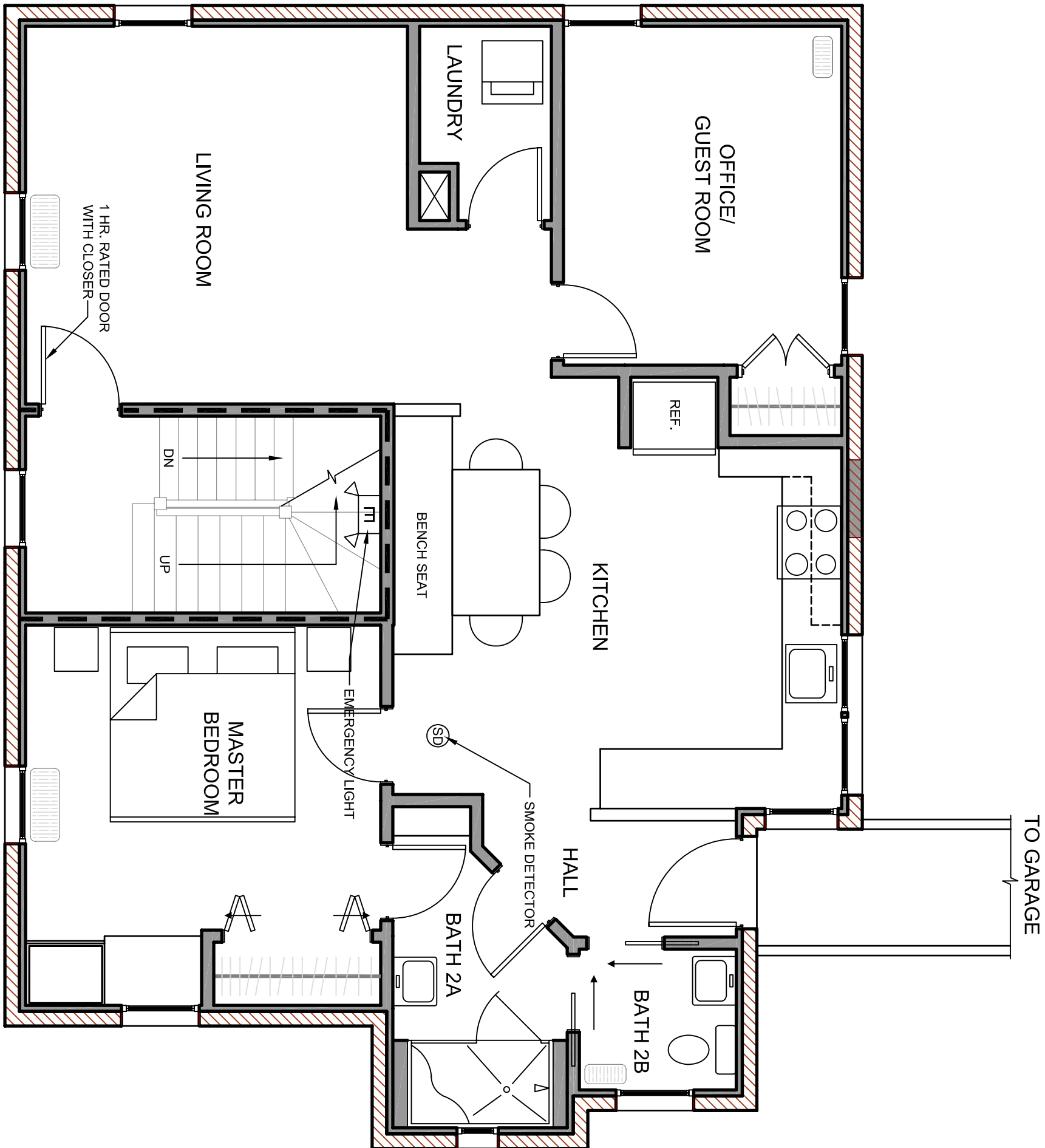
RATED WALL

1" = 1'-0"



PROPOSED BASEMENT LEVEL LIFE SAFETY PLAN

SCALE: 1/4" = 1'-0"



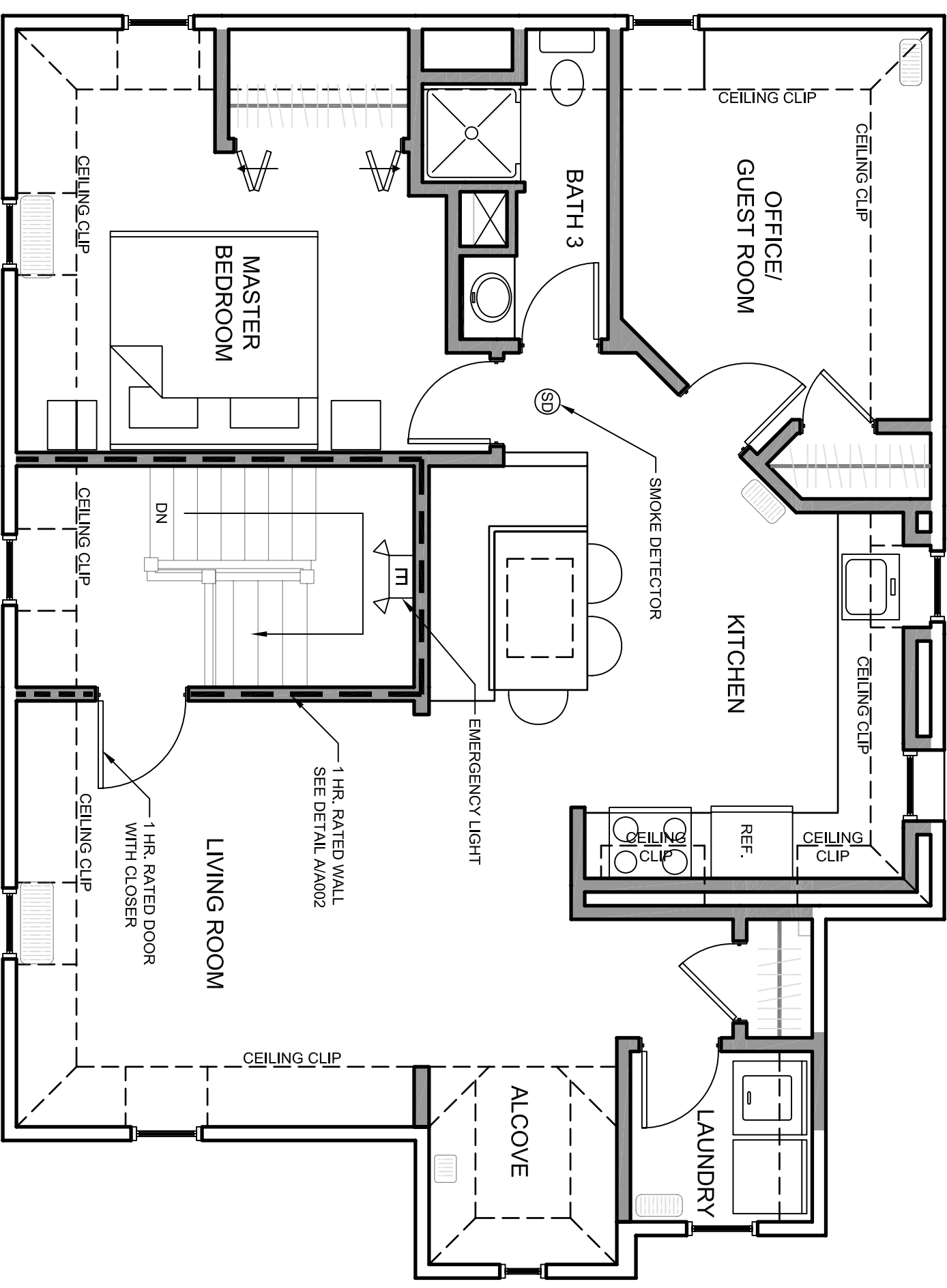
PROPOSED SECOND LEVEL LIFE SAFETY PLAN

SCALE: 1/4" = 1'-0"

--- INDICATES 1 HR. RATED WALL

NOTE:
TRAVEL DISTANCE FROM MOST
REMOTE AREA ON THE THIRD
FLOOR TO THE EXIST DISCHARGE
IS 102'

NOTE:
BUILDING TO BE FULLY SPRINKLED



PROPOSED THIRD LEVEL LIFE SAFETY PLAN

SCALE: 1/4" = 1'-0"

--- INDICATES 1 HR. RATED WALL