

**HOOD INFORMATION - Job#2397100**

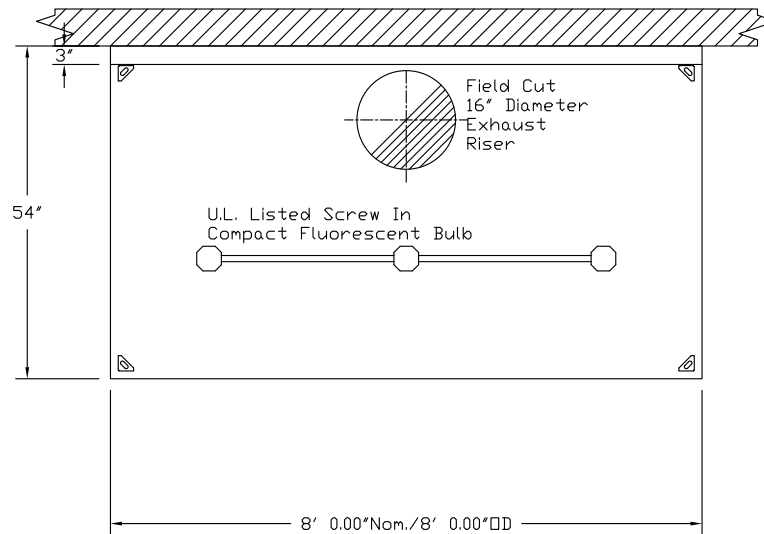
HOOD NO.	TAG	MODEL	LENGTH	MAX. COOKING TEMP.	EXHAUST PLENUM RISER(S)					HOOD CONSTRUCTION	HOOD CONFIG.		
					TOTAL EXH. CFM	WIDTH	LENG.	DIA.	CFM		S.P.	END TO END	ROW
1		5412 SND-2	8' 0.00'	600 Deg.	1880			16"	1880	-0.383'	430 SS Where Exposed	ALONE	ALONE

**HOOD INFORMATION**

HOOD NO.	TAG	TYPE	FILTER(S)			EFFICIENCY @ 9 MICRONS	QTY.	LIGHT(S)		WIRE GUARD	LOCATION	UTILITY CABINET(S)			FIRE SYSTEM PIPING	HOOD HANGING WGHT
			QTY.	HEIGHT	LENGTH			TYPE	TYPE			SIZE	MODEL #	SWITCHES QUANTITY		
1		SS Baffle with Handles	5	16"	16"	30%	3	Screw In Compact	ND					ND	380 LBS	

**HOOD OPTIONS**

HOOD NO.	TAG	OPTION
1		RIGHT VERTICAL END PANEL 27" Top Width, 21" Bottom Width, 68" High Insulated 4" Legs 430 SS
		LEFT VERTICAL END PANEL 27" Top Width, 21" Bottom Width, 68" High Insulated 4" Legs 430 SS



PLAN VIEW - Hood #1  
8' 0.00" LONG 5412SND-2

CUSTOMER APPROVAL TO MANUFACTURE:

Approved as Noted

Approved with NO Exception Taken

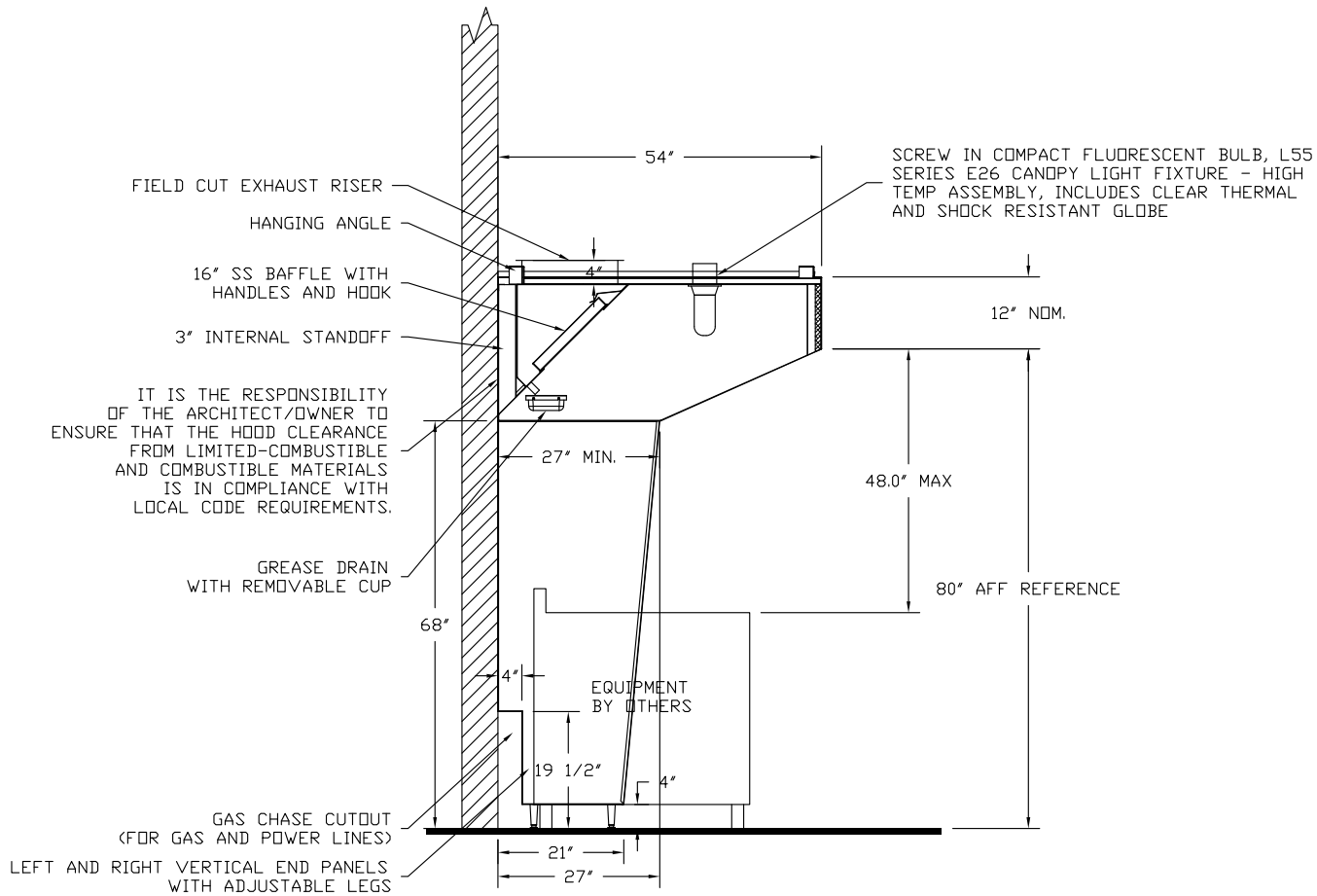
Revise and Resubmit

SIGNATURE \_\_\_\_\_

Your Title \_\_\_\_\_ Date \_\_\_\_\_



JOB Portland r1	
LOCATION SCARBOROUGH, ME,	
DATE 8/14/2015	JOB # 2397100
DWG # 1	DRAWN BY BFC-21
REV.	SCALE 3/8" = 1'-0"



**SECTION VIEW - MODEL 5412SND-2  
HOOD - #1**

**CUSTOMER APPROVAL TO MANUFACTURE:**

Approved as Noted

Approved with NO Exception Taken

Revise and Resubmit

SIGNATURE \_\_\_\_\_

Your Title \_\_\_\_\_ Date \_\_\_\_\_



JOB Portland r1	
LOCATION SCARBOROUGH, ME,	
DATE 8/14/2015	JOB # 2397100
DWG # 2	DRAWN BY BFC-21
REV.	SCALE 3/8" = 1'-0"