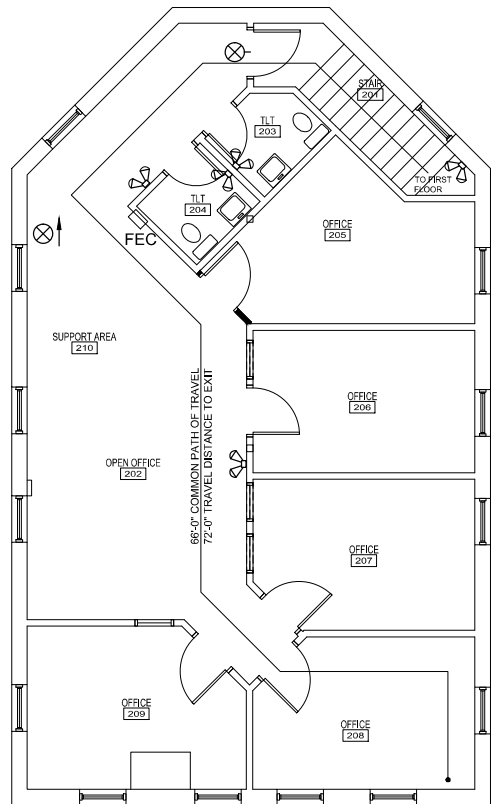


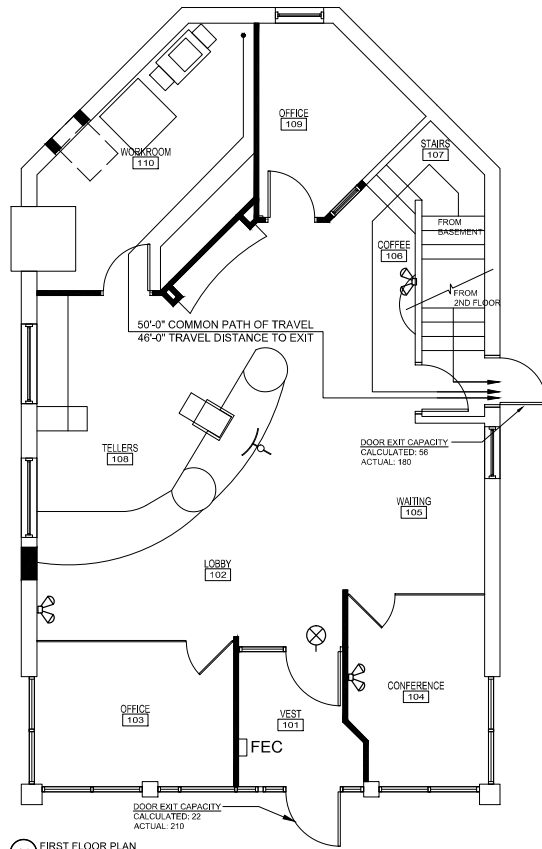
CODE REVIEW - BANGOR SAVINGS BANK 77 MIDDLE STREET

CLASSIFICATION	IBC 2009 EDITION	NFPA 101 2009 EDITION	CONCLUSION
USE GROUP	BUSINESS GROUP B	NEW BUSINESS OCCUPANCIES	BUSINESS GROUP B NEW BUSINESS OCCUPANCIES
CONSTRUCTION TYPE	TYPE III B	TYPE III 200	TYPE III B / TYPE III 200
HIGHT AND AREA SEPARATIONS	BUILDING HEIGHT 35 FEET THREE STORIES ABOVE GRADE AREA PER FLOOR 10,000 SF		BUILDING HEIGHT 35 FEET THREE STORIES ABOVE GRADE AREA PER FLOOR 10,000 SF
REQUIREMENTS FOR AUTOMATIC SPRINKLER SYSTEMS	NOT REQUIRED	NOT REQUIRED	NOT REQUIRED

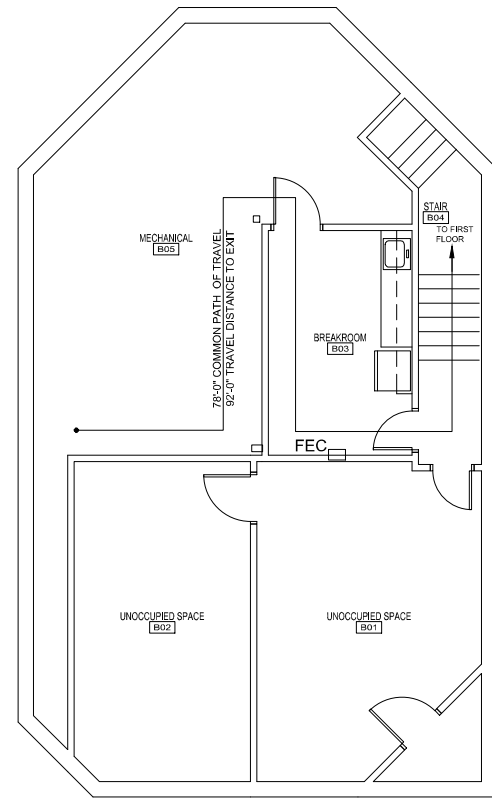
EGRESS			
OCCUPANT LOAD	BASEMENT FLOOR = 6 FIRST FLOOR = 15 SECOND FLOOR = 25 TOTAL BUILDING = 26	BASEMENT FLOOR = 6 FIRST FLOOR = 15 SECOND FLOOR = 18 TOTAL BUILDING = 29	BASEMENT FLOOR = 6 FIRST FLOOR = 15 SECOND FLOOR = 18 TOTAL BUILDING = 29
MEANS OF EGRESS	MINIMUM NUMBER OF EGRESS PER STORY ONE	MINIMUM NUMBER OF EGRESS PER STORY ONE	MINIMUM NUMBER OF EGRESS PER STORY TWO
TRAVEL DISTANCE TO EXITS	MAXIMUM 200 FEET	MAXIMUM 200 FEET	MAXIMUM 200 FEET
COMMON PATH OF TRAVEL	MAXIMUM 100 FEET	MAXIMUM 100 FEET	MAXIMUM 100 FEET



A1 SECOND FLOOR PLAN



A4 FIRST FLOOR PLAN



A11 BASEMENT FLOOR PLAN

NO.	DATE	DESCRIPTION
0	08.07.15	

ISSUED FOR CONSTRUCTION
08.07.15



BSB - 77 MIDDLE STREET
PORTLAND, MAINE

PROJECT NO: 15-001
CAD DWG FILE: 0102 CODE COMPLIANCE PLAN.DWG
DRAWN BY: ###
CHK'D BY: ###
COPYRIGHT: 2015

SHEET TITLE
CODE COMPLIANCE PLANS

G1002