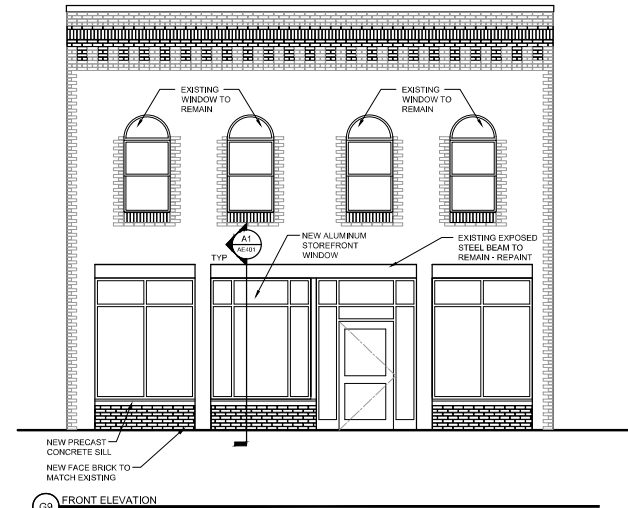
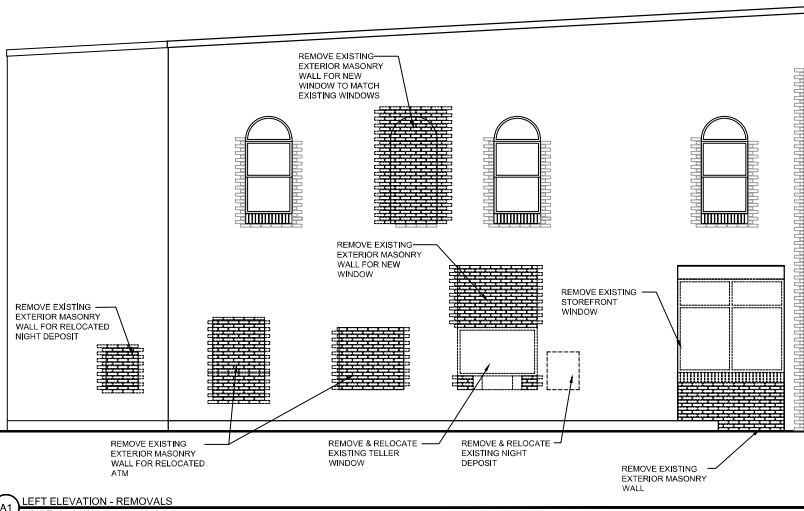


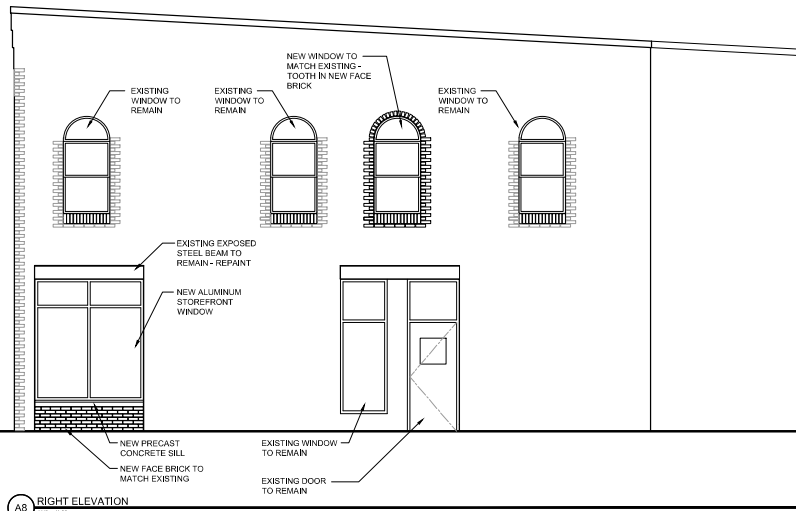
G1 LEFT ELEVATION
1/4" = 1'-0"



G9 FRONT ELEVATION
1/4" = 1'-0"



A1 LEFT ELEVATION - REMOVALS
1/4" = 1'-0"



A8 RIGHT ELEVATION
1/4" = 1'-0"

NO.	DATE	DESCRIPTION
0	08.07.15	ISSUED FOR CONSTRUCTION

ISSUED FOR CONSTRUCTION
08.07.15



BSB - 77 MIDDLE STREET
PORTLAND, MAINE

PROJECT NO: 15-001
CAD DWG FILE: AE201 EXTERIOR ELEVATIONS.DWG
DRAWN BY: ###
CHK'D BY: ###
COPYRIGHT: 2015

SHEET TITLE
EXTERIOR ELEVATIONS

AE201