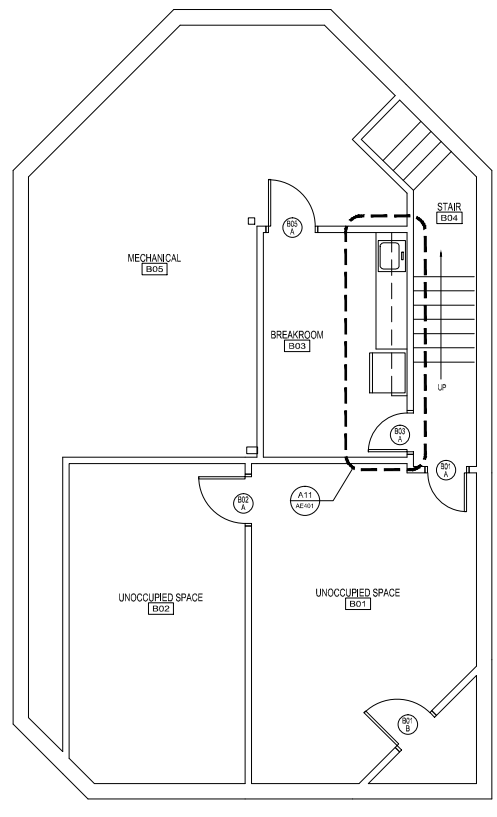
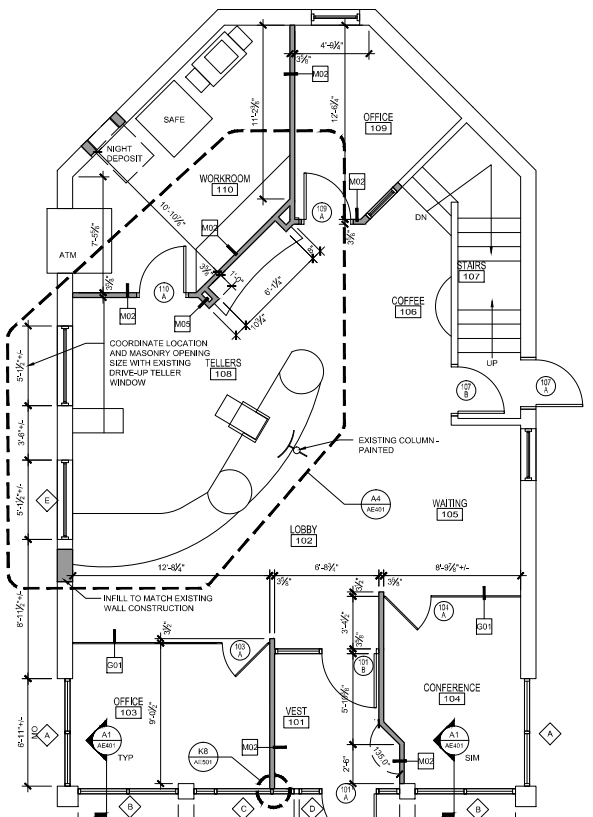
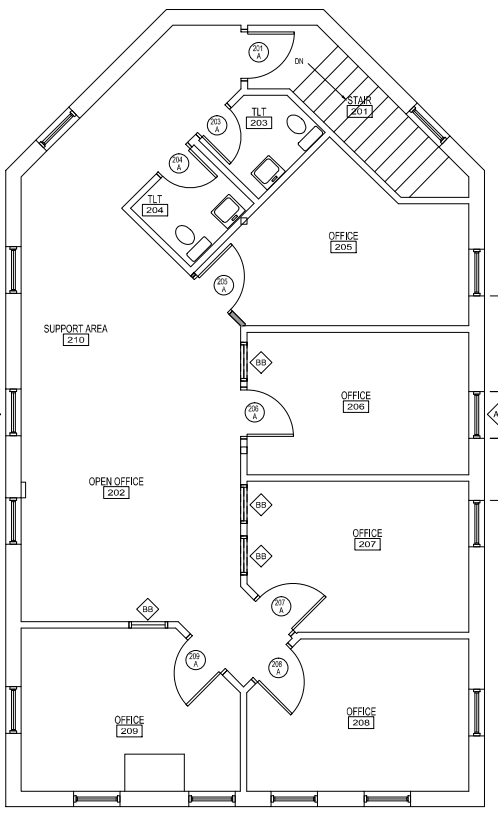


GENERAL PLAN NOTES:

- ALL INTERIOR PARTITION TYPES ARE **M02** TYPE UNLESS OTHERWISE NOTED. SEE SHEET **AE501** FOR PARTITION TYPES INDICATED ON THIS DRAWING.
- REFER TO ALL DRAWINGS INCLUDING ARCHITECTURAL, MECHANICAL, ELECTRICAL AND PLUMBING DRAWINGS FOR ADDITIONAL GENERAL NOTES, ABBREVIATIONS AND SYMBOLS.
- ALL DRAWINGS ARE OF EQUAL IMPORTANCE IN DEFINING THE WORK OF THE CONTRACT DOCUMENTS. CONTRACTORS SHALL REVIEW ALL DRAWINGS BEFORE THE INSTALLATION OF THEIR WORK. SHOULD THERE BE A DISCREPANCY WITHIN AND BETWEEN THE DRAWINGS THAT WOULD CAUSE AN AWKWARD OR IMPROPER INSTALLATION NOTIFY ARCHITECT FOR CLARIFICATION PRIOR TO INSTALLATION OF SAID WORK. ANY WORK INSTALLED IN CONFLICT WITH THE ARCHITECTURAL DRAWINGS SHALL BE CORRECTED BY CONTRACTOR AT ITS EXPENSE AND AT NO ADDITIONAL COST TO OWNER OR ARCHITECT.
- DO NOT SCALE DRAWINGS. THE DRAWINGS ARE NOT NECESSARILY TO SCALE - USE GIVEN DIMENSIONS. CONTRACTOR SHALL VERIFY ALL CONDITIONS AND DIMENSIONS AT THE JOB SITE PRIOR TO THE START OF CONSTRUCTION. IF DISCREPANCIES ARE FOUND, NOTIFY ARCHITECT FOR CLARIFICATION BEFORE COMMENCING THE WORK. ALL DIMENSIONS ARE GIVEN TO FACE OF STUD, FACE OF MASONRY OR FACE OF CONCRETE. ALL WALL AND PARTITION THICKNESS DIMENSIONS ARE NOMINAL. SEE WALL SECTIONS AND PARTITION TYPES FOR EXACT CONSTRUCTION.
- SEE SHEET **AE401** FOR CASEWORK DETAIL AND INFORMATION.
- FOR TYPICAL MOUNTING HEIGHTS SEE SHEET **AE202**.
- SEE SHEET **04002** FOR CODE COMPLIANCE PLAN.
- DASHED PLAN ELEMENTS WILL BE PROVIDED BY OWNER ARE SHOWN FOR COORDINATION ONLY.
- DETAILS NOT SHOWN ARE SIMILAR IN CHARACTER TO THOSE SHOWN. WHERE SPECIFIC DIMENSIONS, DETAILS OR DESIGN INTENT CANNOT BE DETERMINED, CONSULT ARCHITECT BEFORE PROCEEDING WITH THE WORK.
- FINISH FLOOR ELEVATIONS ARE TO TOP OF CONCRETE, UNLESS OTHERWISE NOTED.
- DOOR JAMBS ARE 6" FROM NEAREST ADJACENT INTERSECTING PARTITION UNLESS NOTED OTHERWISE.
- CONTRACTOR SHALL PROVIDE STIFFENERS, BRACING, BACKING PLATES AND SUPPORTING BRACKETS REQUIRED FOR THE PROPER INSTALLATION OF ALL CASEWORK, TOILET ROOM ACCESSORIES, TOILET PARTITIONS AND MISCELLANEOUS EQUIPMENT WHETHER SUCH SUPPORTS ARE SHOWN OR NOT.
- INSTALL ALL RECESSED CABINETS, PANELS, BOXES LOCATED IN FIRE-RATED PARTITIONS TO MAINTAIN THE FIRE-RATED CONSTRUCTION.
- REFER TO MECHANICAL AND ELECTRICAL CONTRACTORS DRAWINGS AND MANUFACTURERS TEMPLATE DRAWINGS FOR ALL MECHANICAL AND ELECTRICAL EQUIPMENT SUPPORTS, BOLT SETTING TEMPLATES, ISOLATIONS, SPRING ISOLATION, ETC. NOT SHOWN ON THE DRAWINGS.



NO.	DATE	DESCRIPTION
0	06.09.09	
1	08.07.15	ISSUED FOR CONSTRUCTION

ISSUED FOR CONSTRUCTION
08.07.15



BSB - 77 MIDDLE STREET
PORTLAND, MAINE

PROJECT NO: 15-001
CAD DWG FILE: AE101 FLOOR PLANNING
DRAWN BY: ###
CHK'D BY: ###
COPYRIGHT: 2015

SHEET TITLE
FLOOR PLANS

AE101