

STREE

SOUTHBOUND

FRANKLIN

CITY Public Safety



54009

COUNTY JAIL



184  
186  
188  
190  
183  
185  
187  
189

119  
117  
115  
113  
111  
109  
107  
105  
103  
101

49.58

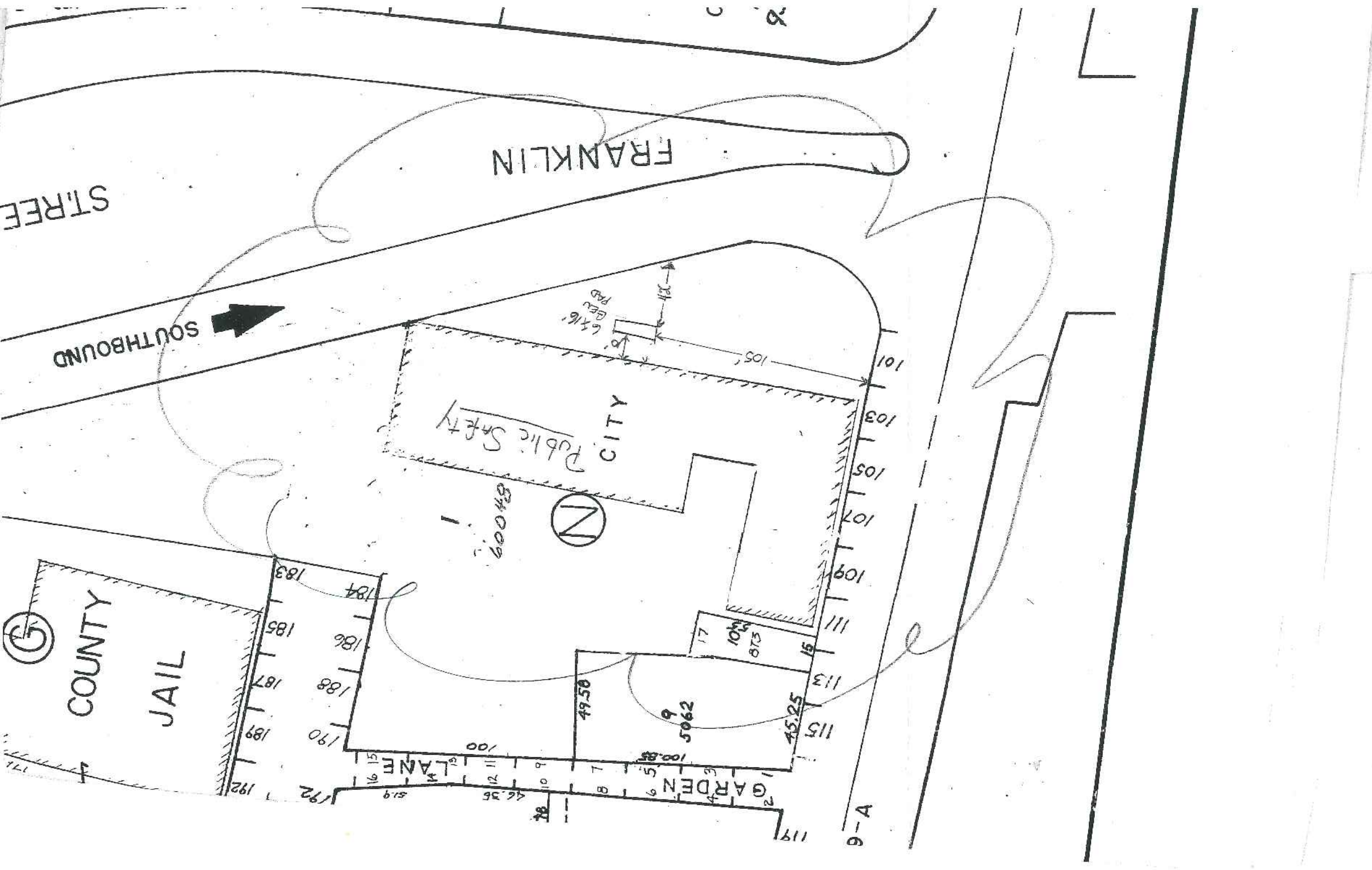
5062

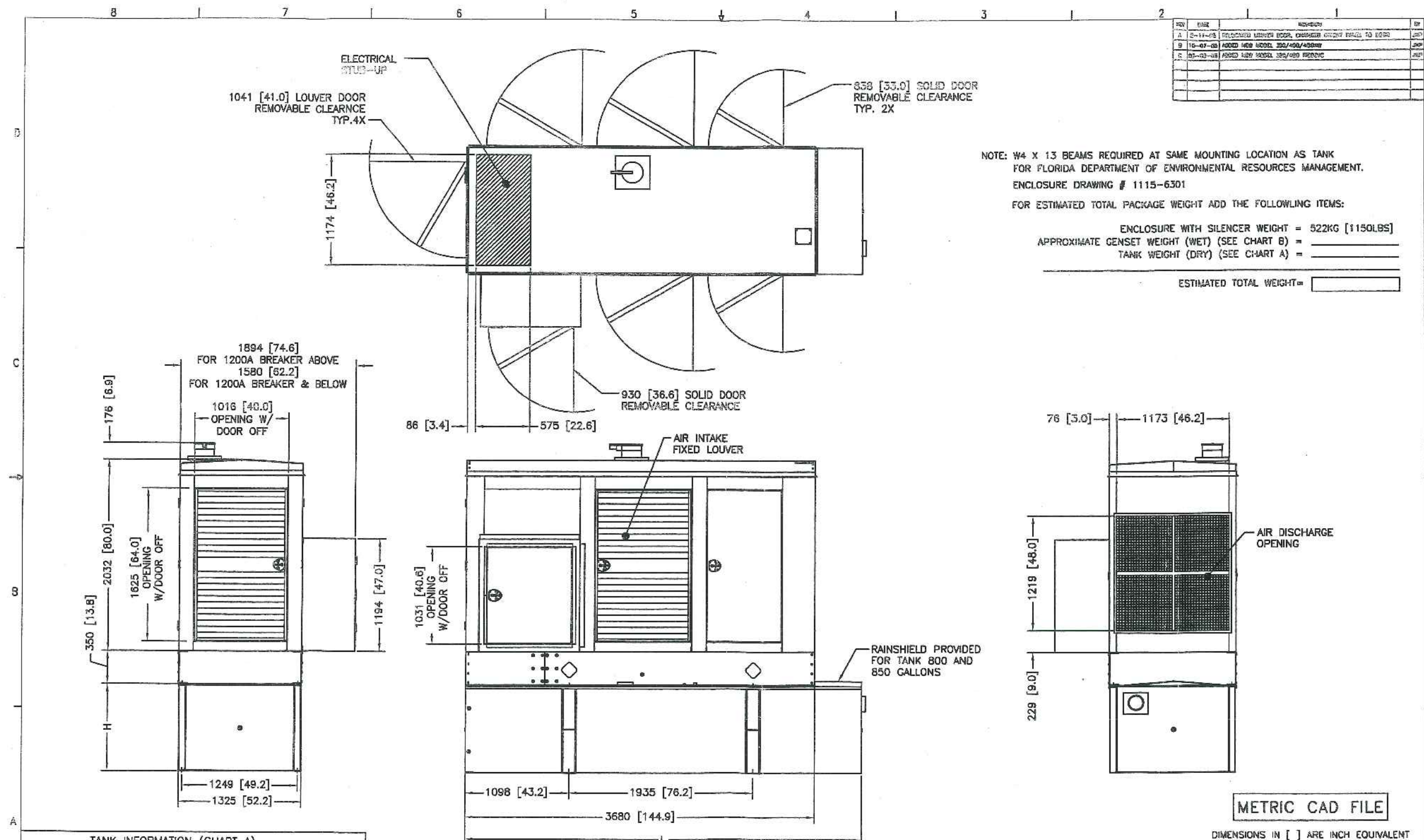
9-A

6x16  
GEL  
PAD

118

2  
3





REV	DATE	DESCRIPTION	BY
A	2-11-05	RELOCATED LOWER DOOR, CHANGED CLEARANCE TO 2X	JEP
B	10-07-05	ADDED NEW MODEL 350/400/450KW	JEP
C	05-03-06	ADDED NEW MODEL 350/400/450 KW	JEP

NOTE: W4 X 13 BEAMS REQUIRED AT SAME MOUNTING LOCATION AS TANK FOR FLORIDA DEPARTMENT OF ENVIRONMENTAL RESOURCES MANAGEMENT.  
ENCLOSURE DRAWING # 1115-6301

FOR ESTIMATED TOTAL PACKAGE WEIGHT ADD THE FOLLOWING ITEMS:

ENCLOSURE WITH SILENCER WEIGHT = 522KG [1150LBS]  
APPROXIMATE GENSET WEIGHT (WET) (SEE CHART B) = \_\_\_\_\_  
TANK WEIGHT (DRY) (SEE CHART A) = \_\_\_\_\_  
ESTIMATED TOTAL WEIGHT = \_\_\_\_\_

TANK INFORMATION (CHART A)				
DWG NO.	GALLONS	H DIM.	L DIM.	TANK WEIGHT (DRY)
1119-7751	350	457 [18.0]	3680 [144.9]	725KG [1597LBS]
1119-7752	420	559 [22.0]	3680 [144.9]	796KG [1752LBS]
1119-7753	500	635 [25.0]	3680 [144.9]	845KG [1858LBS]
1119-7754	660	838 [33.0]	3680 [144.9]	973KG [2140LBS]
1119-7755	800	914 [36.0]	3912 [154.0]	1071KG [2356LBS]
1119-7756	850	914 [36.0]	4166 [164.0]	1125KG [2477LBS]

GENSET WEIGHT (WET) (CHART B)	
GENSET MODELS	APPROX. WEIGHT
350/400/450KW	3272KG [7200LBS]
350/400 REOZVC	3182KG [7000LBS]

WEATHER ENCLOSURE AND SILENCER  
W/SUB BASE TANK OPTION  
350/400/450 KW SERIES 60  
350/400 KW 350/400 12.1A65

METRIC CAD FILE

DIMENSIONS IN [ ] ARE INCH EQUIVALENT

TRAMONT CORPORATION DIMENSION PRINT	
DATE: 1-13-05 DRAWN BY: JEP CHECKED BY: JEP APPROVED BY: JEP	PROJECT NO: 1400-7765-7770 SHEET NO: 1-3 TOTAL SHEETS: 1-3