

City of Portland
PUBLIC SAFETY BUILDING
 Crime Lab Project

Winton Scott
 Architects
 5 Milk Street
 Portland, ME 04101

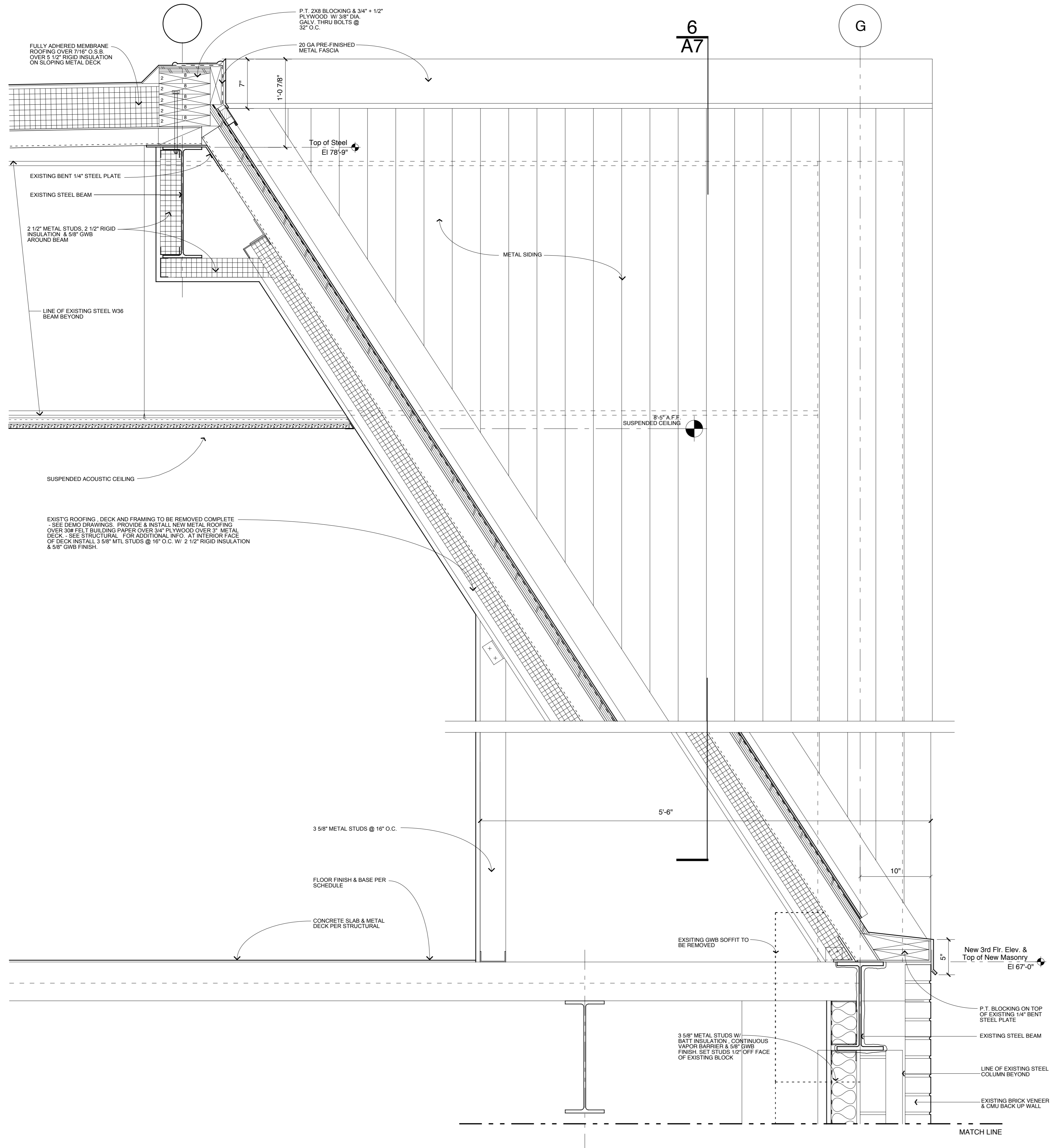
Becker Structural
 Engineers, Inc.
 75 York Street
 Portland, Maine 04101

Mechanical
 Systems
 Engineers
 10 Royal River Center
 Yarmouth, Maine 04096

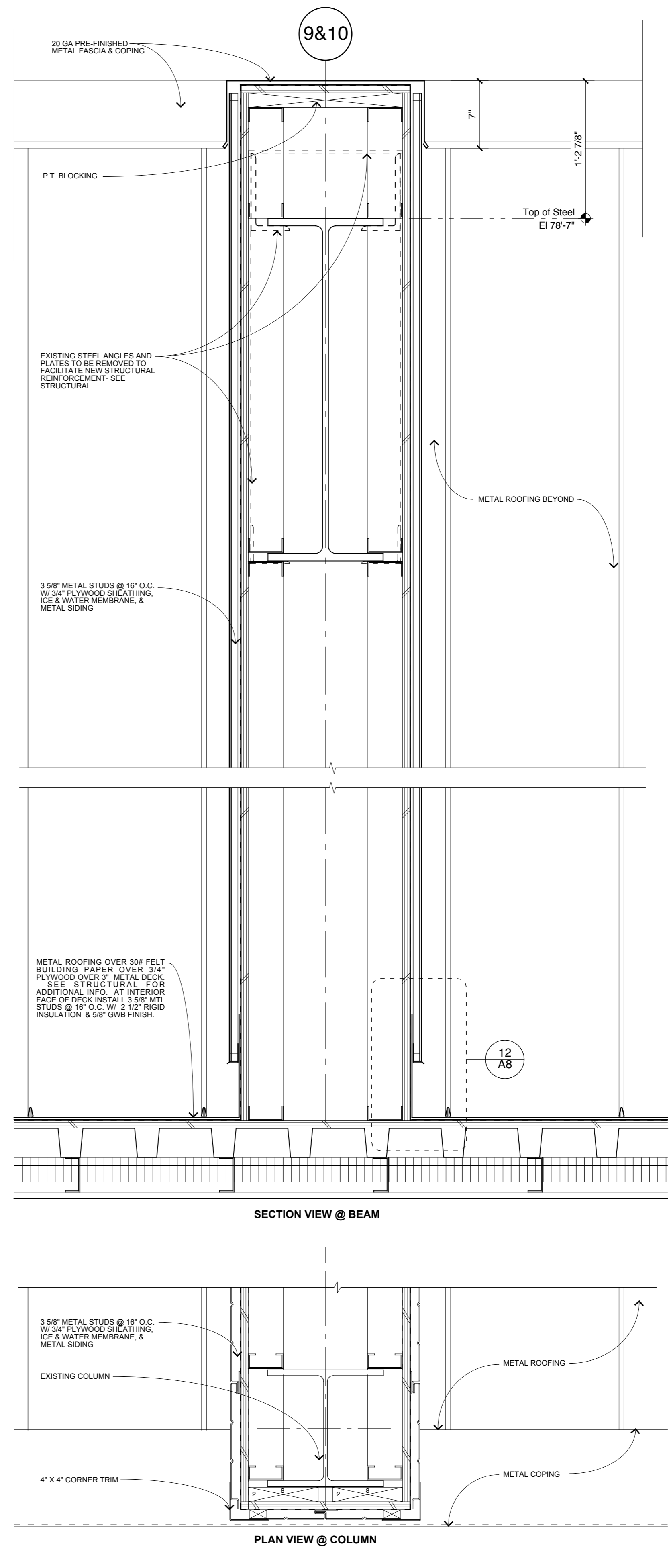
Bartlett Design
 942 Washington St.
 Bath, ME 04530

WALL SECTIONS

A7



5 WALL SECTION AT 'G' LINE
 1 1/2" = 1' - 0"



6 DETAILS AT EXPOSED BEAM/COLUMN ENCLOSURE
 1 1/2" = 1' - 0"