

City of Portland  
**PUBLIC SAFETY BUILDING**  
 Crime Lab Project

**Winton Scott Architects**  
 5 Milk Street  
 Portland, ME 04101

**Becker Structural Engineers, Inc.**  
 75 York Street  
 Portland, Maine 04101

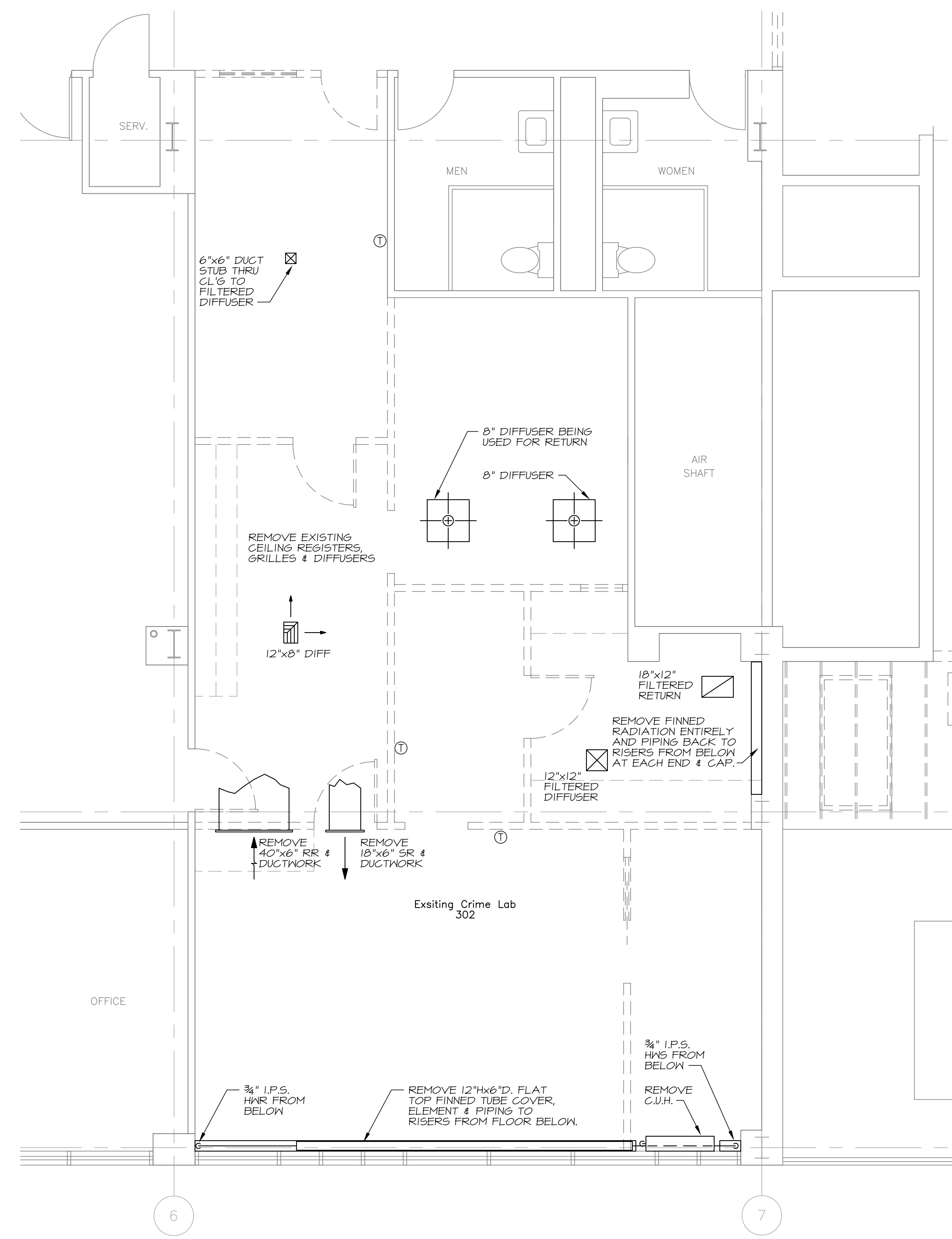
**Mechanical Systems Engineers**  
 10 Royal River Center  
 Yarmouth, Maine 04096

**Bartlett Design**  
 942 Washington St.  
 Bath, ME 04530

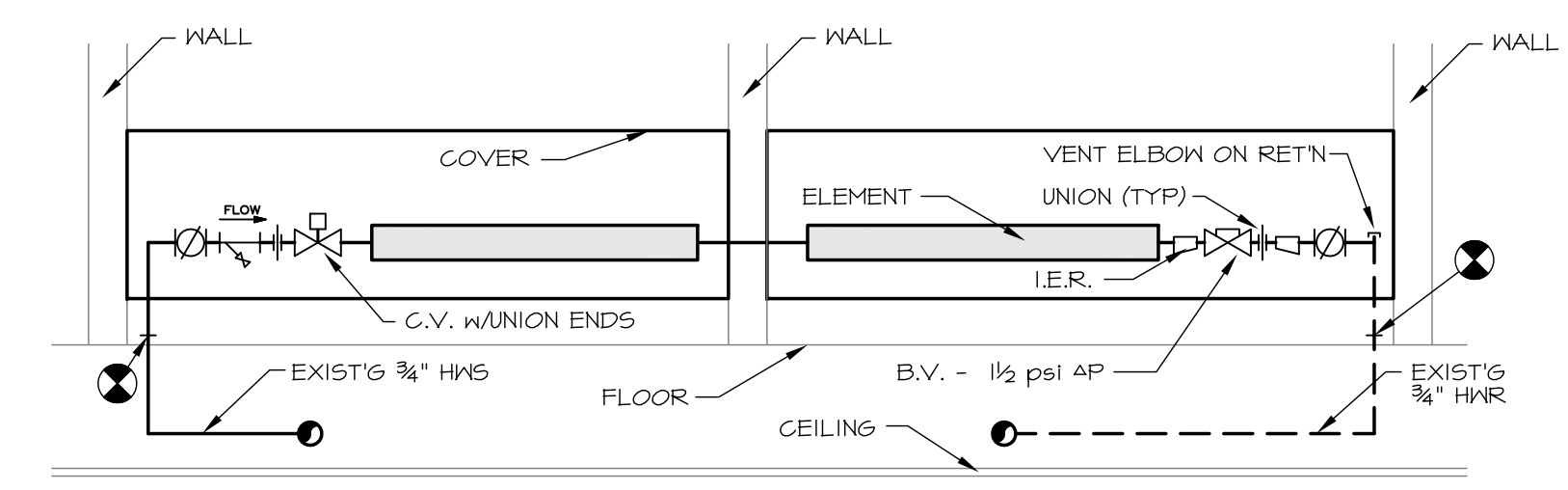
ALTERNATE #1  
 MECHANICAL

**M6**  
 M.S.E. Proj. 0811

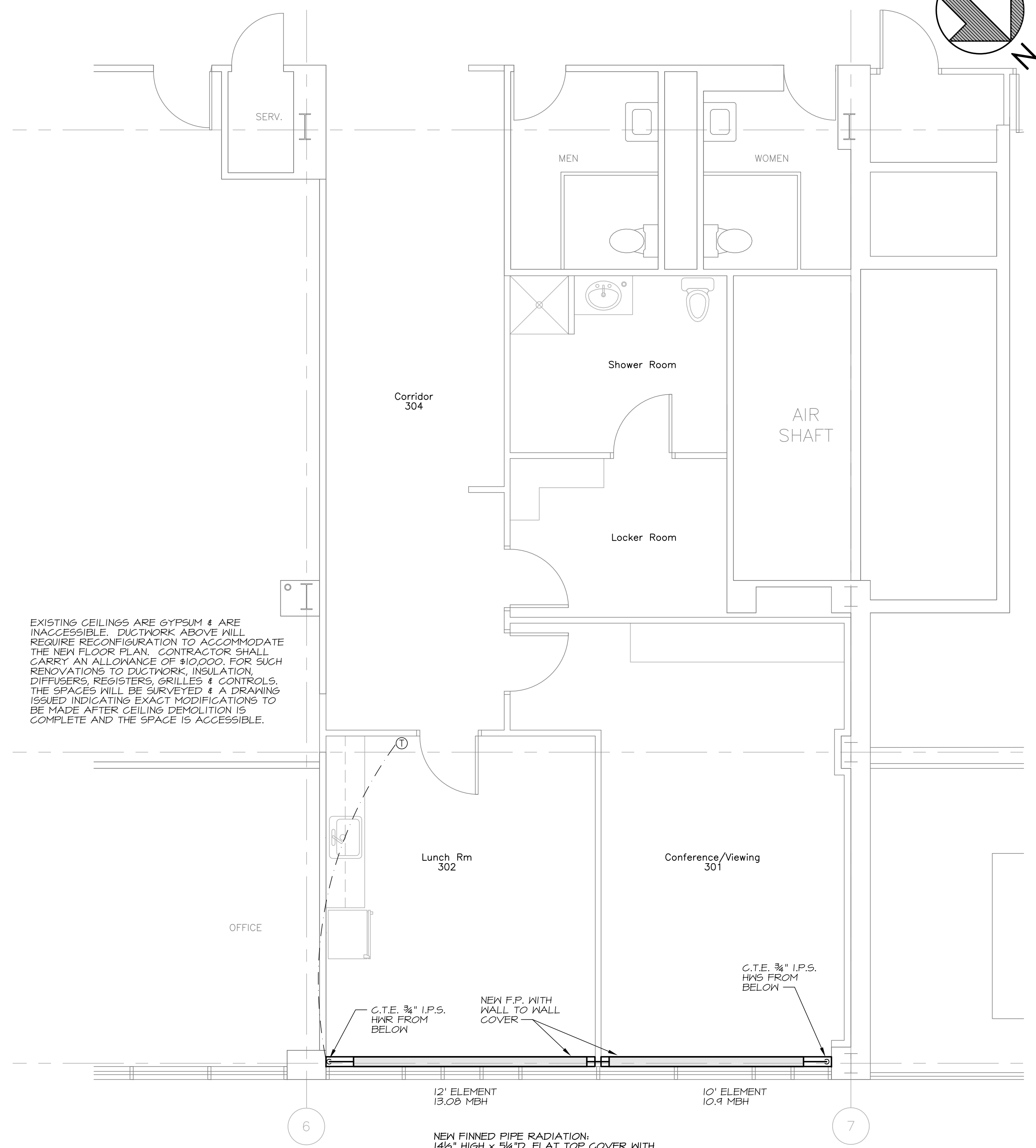
Scale: 1/8"=1'-0" Date: 6/16/08



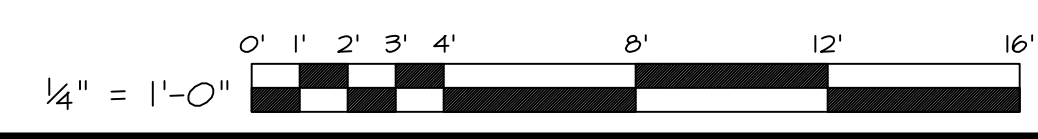
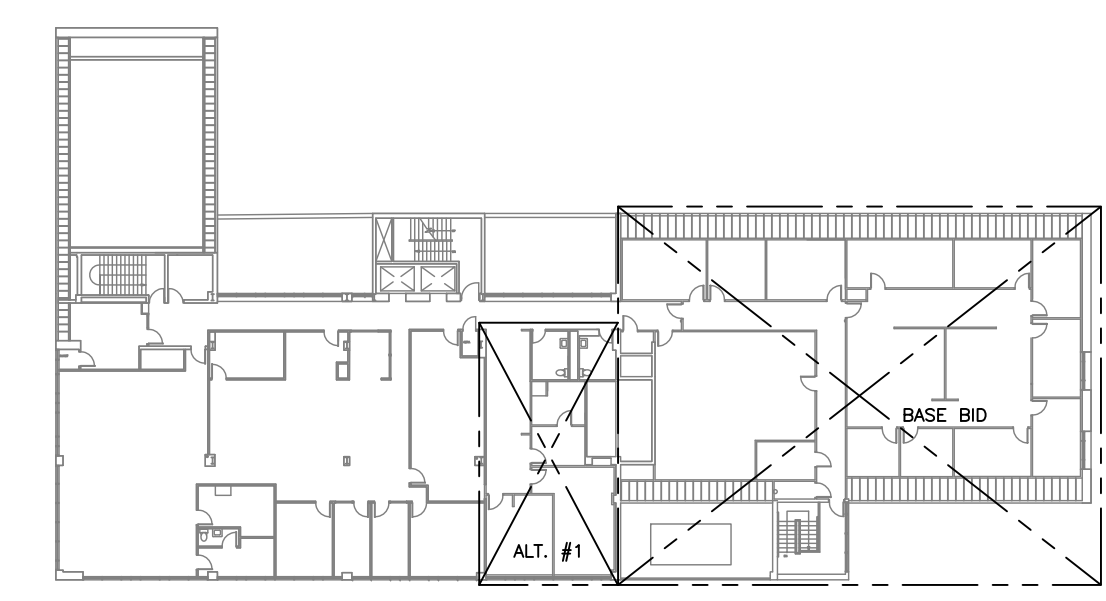
**1 EXISTING CRIME LAB AREA DEMOLITION**  
 SCALE: 1/4" = 1'-0"



**3 UPFEED FINNED PIPE - OPPOSITE END FEED**  
 NO SCALE



**2 EXISTING CRIME LAB AREA NEW WORK**  
 SCALE: 1/4" = 1'-0"



EXISTING CEILINGS ARE GYPSUM & ARE INACCESSIBLE. DUCTWORK ABOVE WILL REQUIRE RECONFIGURATION TO ACCOMMODATE THE NEW FLOOR PLAN. CONTRACTOR SHALL CARRY AN ALLOWANCE OF \$10,000. FOR SUCH RENOVATIONS TO DUCTWORK, INSULATION, DIFFUSERS, REGISTERS, GRILLES & CONTROLS. THE SPACES WILL BE SURVEYED & A DRAWING ISSUED INDICATING EXACT MODIFICATIONS TO BE MADE AFTER CEILING DEMOLITION IS COMPLETE AND THE SPACE IS ACCESSIBLE.

NEW FINNED PIPE RADIATION:  
 14 1/2" HIGH x 5 1/4" D. FLAT TOP COVER WITH ARCHITECTURAL GRILLE. 10 1/4" AFF TO TOP  
 3/8" COPPER TUBE WITH 4 1/4" x 3 3/8" ALUMINUM FINS, 50 PER LF. 1090 BTU/LF @ 170° A.M.T.  
 1 TIER ELEMENT.

June 16, 2008 - 12:18 pm  
 \\Mse\ps1\Projects\0811 - Portland Crime Lab\Drawings\0811\_M6.dwg